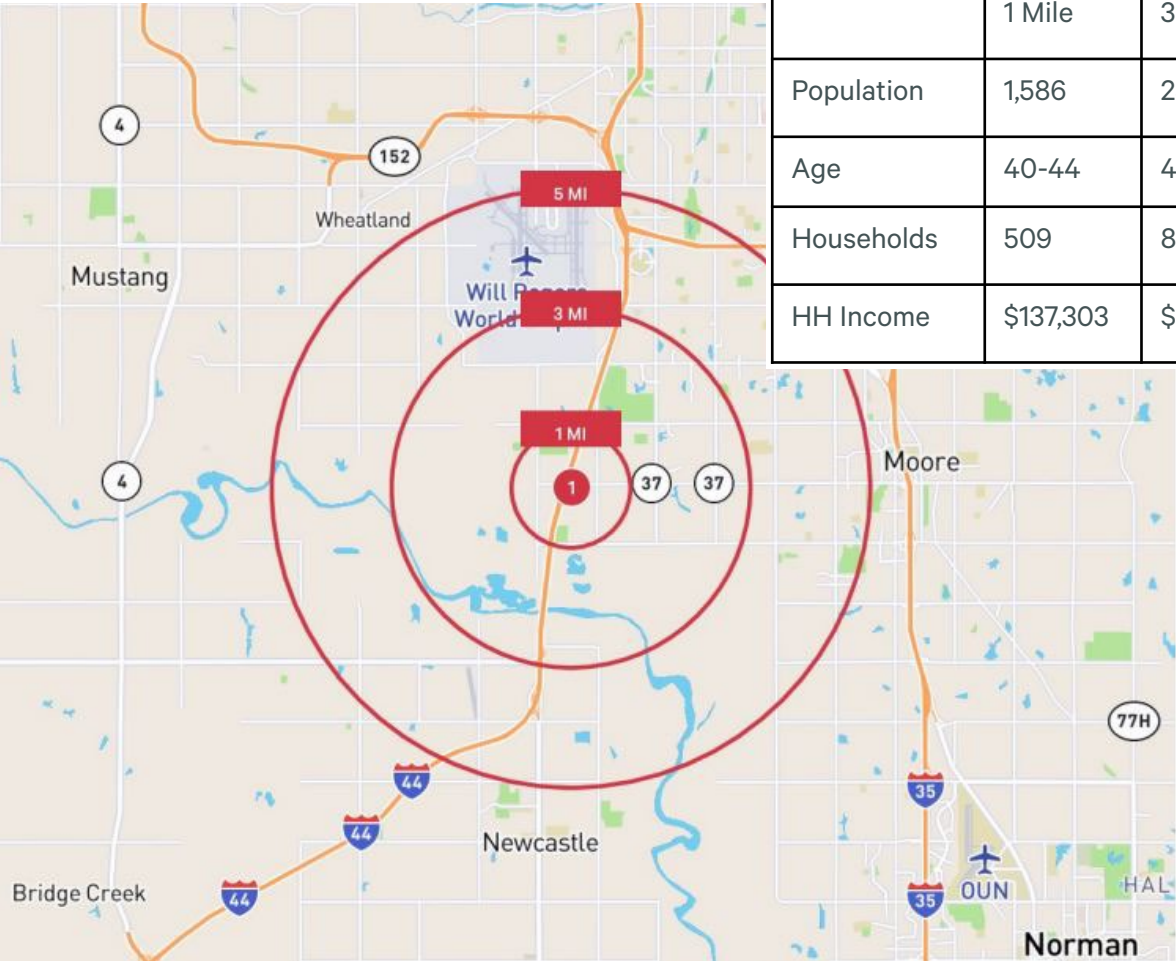


# St Anthony South Healthplex

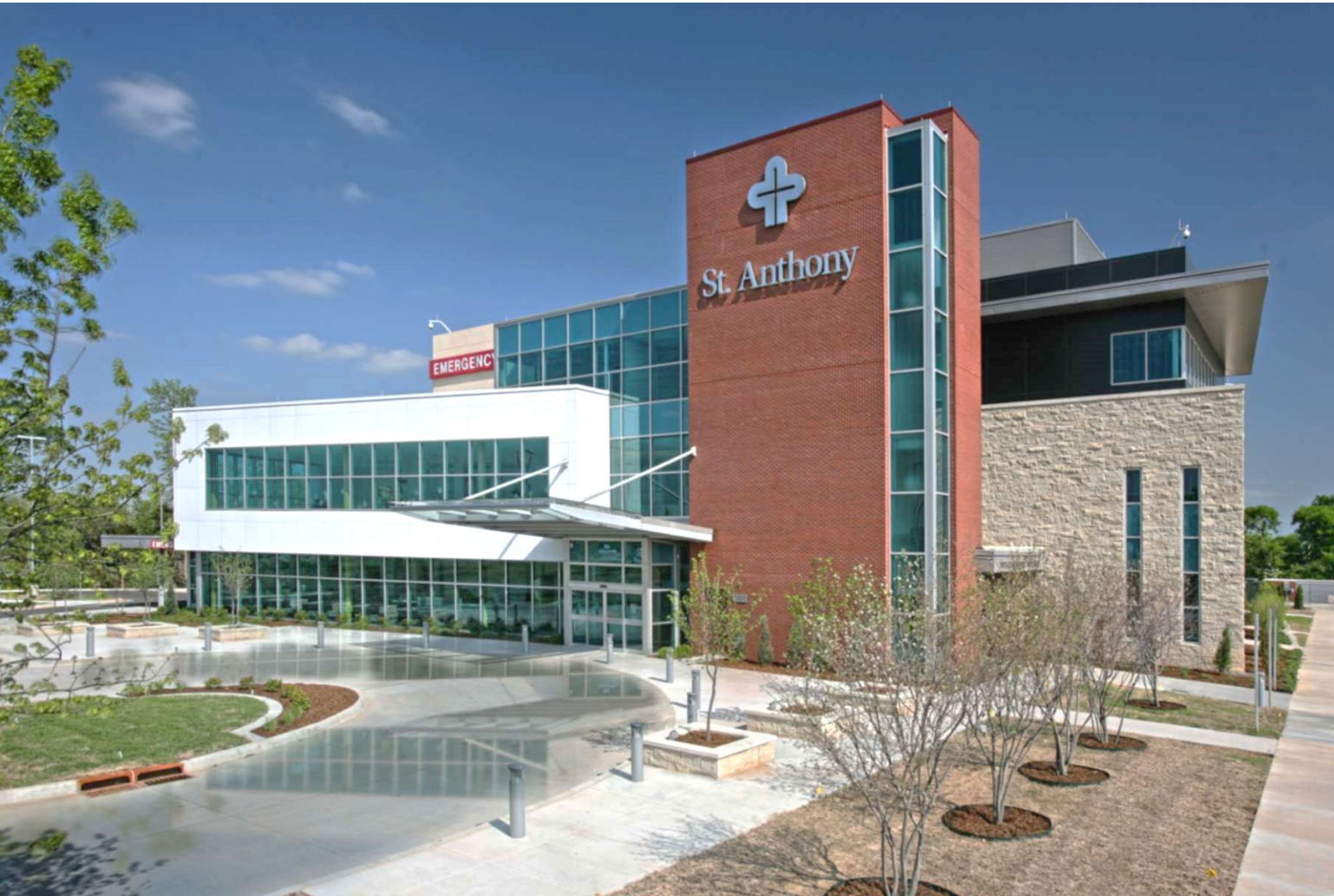


	1 Mile	3 Miles	5 Miles
Population	1,586	23,739	99,922
Age	40-44	45-49	35-39
Households	509	8,534	37,500
HH Income	\$137,303	\$128,597	\$95,316



# St Anthony South Healthplex

13500 S Tulsa Drive Oklahoma City, OK 73170



## Medical Office | Office Space For Lease

- Available RSF: 2,091 – 5,406 RSF
- Suite 305: 2,193 RSF is “plug and play” medical space equipped with exam furnishing and diagnostic equipment
- Lease Rate: \$25.00 RSF/YR (full service)
- Year Built: 2012
- Building Size: 52,000 SF



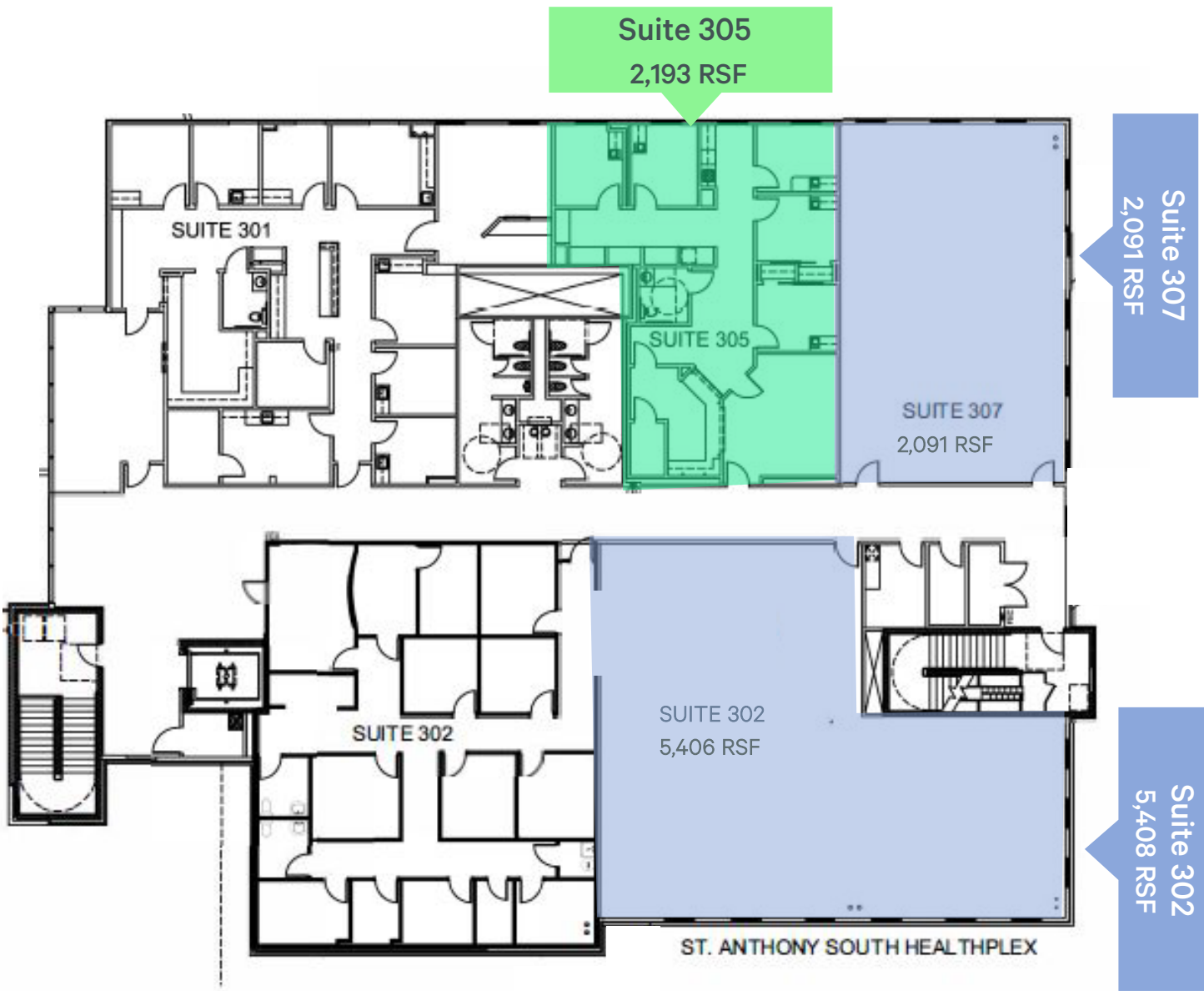


# St Anthony South Healthplex

## Available Space

SUITE	TENANT	SIZE (RSF)	LEASE TYPE	Description
Suite 302	Available	5,406 RSF	Full Service	-
Suite 305	Available	2,193 RSF	Full Service	On Demand
Suite 307	Available	2,091 RSF	Full Service	-

## Furnished “Plug and Play” Medical Office



# St Anthony South Healthplex

## Property Overview

The St. Anthony South Healthplex is a conveniently located at the intersection of I-44 and SW 134th. The exterior of the building is accented with natural stacked stone and floor to ceiling windows, providing an abundance of natural light throughout the interior of the building. A state-of-the-art pneumatic tube system was thoughtfully positioned throughout the building providing all physicians with controlled access to the full range of laboratory services located on the first floor.

