

FOR SALE OR LEASE



NEWMARK



MOUNTAIN WEST

CODY BLACK, OWNER/AGENT

cblack@newmarkmw.com

direct 385.233.9141

[View Profile](#)

PROPERTY DETAILS

1195 N. Spring Creek Plaza, Springville, UT 84663

- Suite F: 5,171 SF available
 - » Warehouse: 2,256 SF
 - » Main floor office: 1,590 SF
 - » Second floor office: 1,325 SF
- Sales price: \$1,266,895 (\$245 SF)
- CAP rate with 5% vacancy: 5.3%
- Current lease rate: \$6,463.75/month base rent (\$1.25/SF NNN)
- NNN fees estimated at \$1,137.62/month (\$0.22/SF)
- Shared outdoor dock high
- Two (2) 12' x 12' roll-up doors
- Beautifully landscaped
- Abundant parking
- Year built: 2007
- Tenant lease expires September 30, 2026
- Ideal for individual user

**FULL SERVICE
COMMERCIAL REAL ESTATE**

2015 West Grove Parkway, Suite J

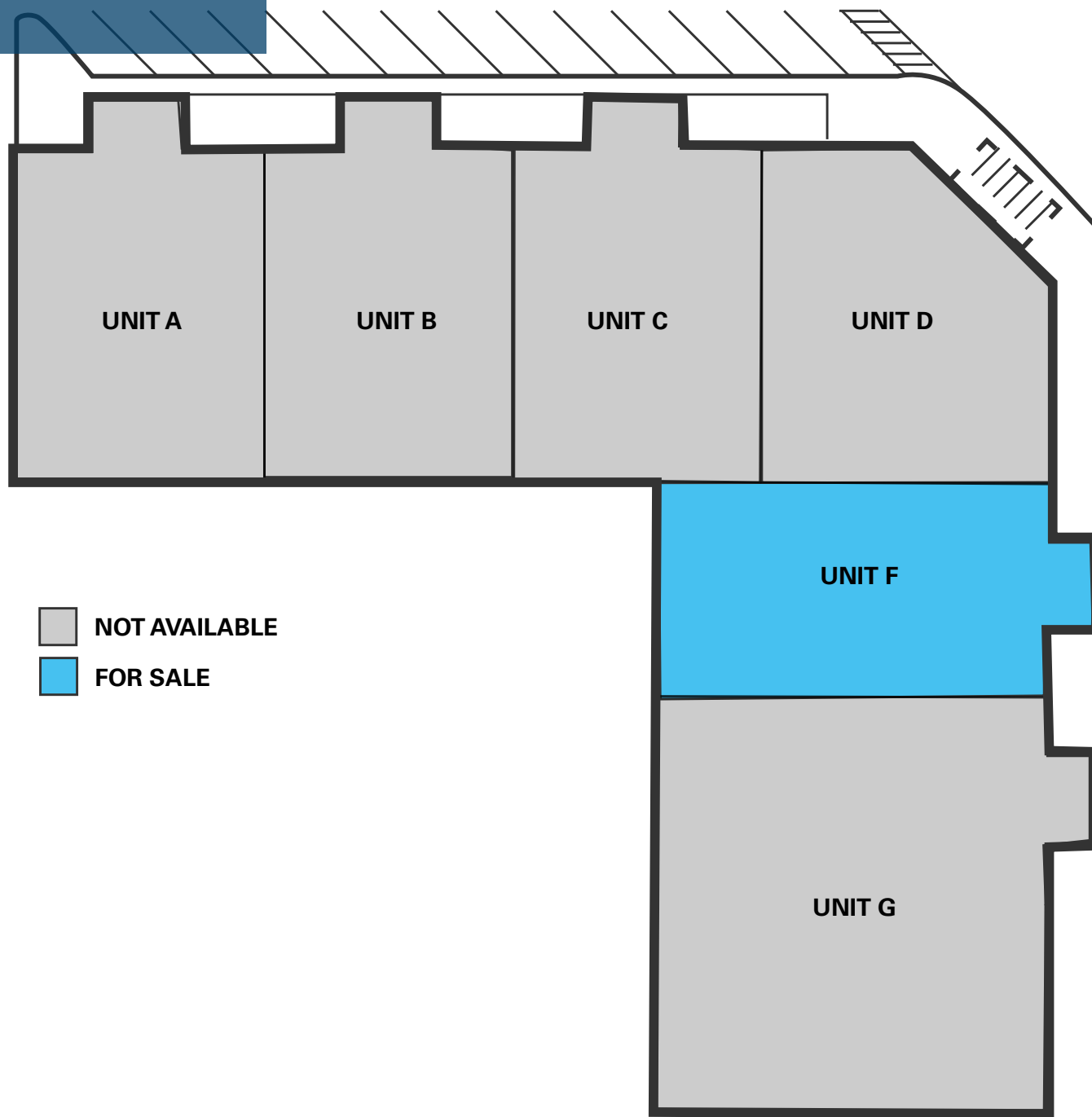
Pleasant Grove, UT 84062



Office 385.233.9140

www.newmarkmw.com

SPRING CREEK PLAZA

SITE PLAN



-  NOT AVAILABLE
-  FOR SALE

NEWMARK

 **MOUNTAIN WEST**

CODY BLACK, OWNER/AGENT

cblack@newmarkmw.com

direct 385.233.9141

[View Profile](#)

**FULL SERVICE
COMMERCIAL REAL ESTATE**

2015 West Grove Parkway, Suite J

Pleasant Grove, UT 84062

Office 385.233.9140

www.newmarkmw.com



Spring Creek Road

SITE

NEWMARK



MOUNTAIN WEST

CODY BLACK, OWNER/AGENT

cblack@newmarkmw.com

direct 385.233.9141

[View Profile](#)

FULL SERVICE

COMMERCIAL REAL ESTATE

2015 West Grove Parkway, Suite J

Pleasant Grove, UT 84062

Office 385.233.9140

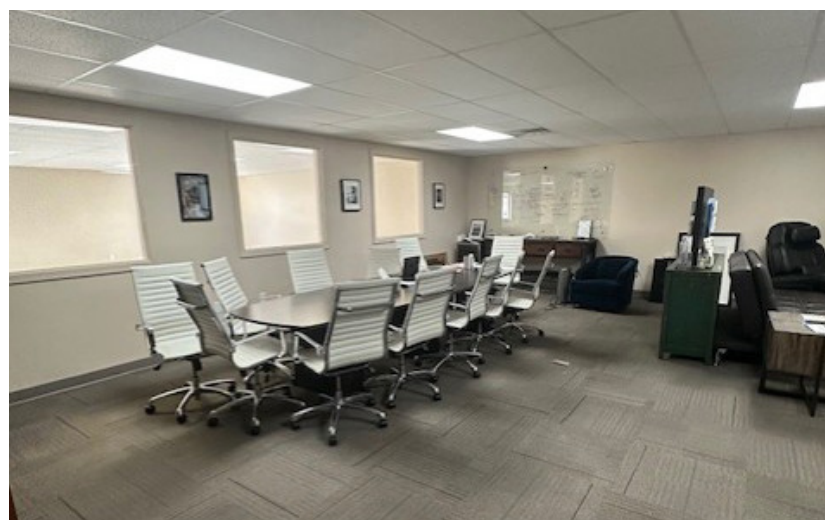
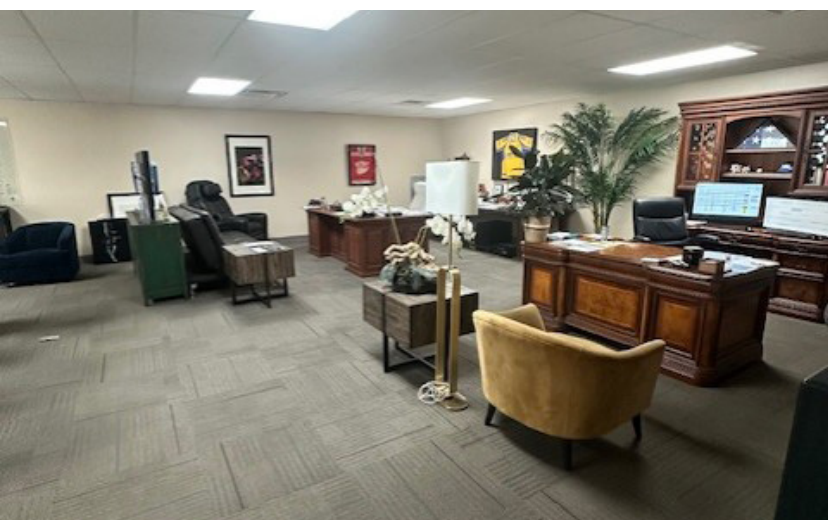
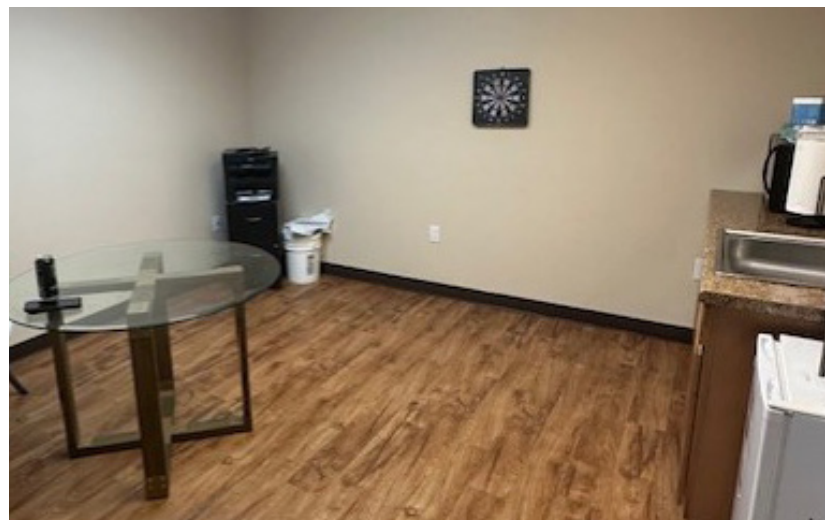
www.newmarkmw.com



NEWMARK

 **MOUNTAIN WEST**

CODY BLACK, OWNER/AGENT
 cblack@newmarkmw.com
 direct 385.233.9141
[View Profile](#)



**FULL SERVICE
 COMMERCIAL REAL ESTATE**
 2015 West Grove Parkway, Suite J
 Pleasant Grove, UT 84062
 Office 385.233.9140
www.newmarkmw.com

