

# 3619 Cantrell Industrial Ct | Acworth, GA 30101



## INDUSTRIAL SPACE FOR LEASE OR SALE

### Available Space:

- ▶ Total SF Available: 10,550 SF
- ▶ Office SF: ±1,286 SF
- ▶ Dock High Doors: 1
- ▶ Drive-In Doors: 2

### Property Features:

- ▶ Clear Height: 18'
- ▶ Zoning: Heavy Industrial
- ▶ Sprinklered
- ▶ Fenced outside storage



1600 NORTHSIDE DRIVE NW  
Suite 100  
ATLANTA, GA 30318  
404.352.1882  
WHNRE.COM

Conner Dickinson | Associate  
C: 770.542.7917  
cdickinson@whnre.com

Preston Pannell | Associate  
C: 404.877.2178  
ppannell@whnre.com

# 3619 Cantrell Industrial Ct | Acworth, GA 30101



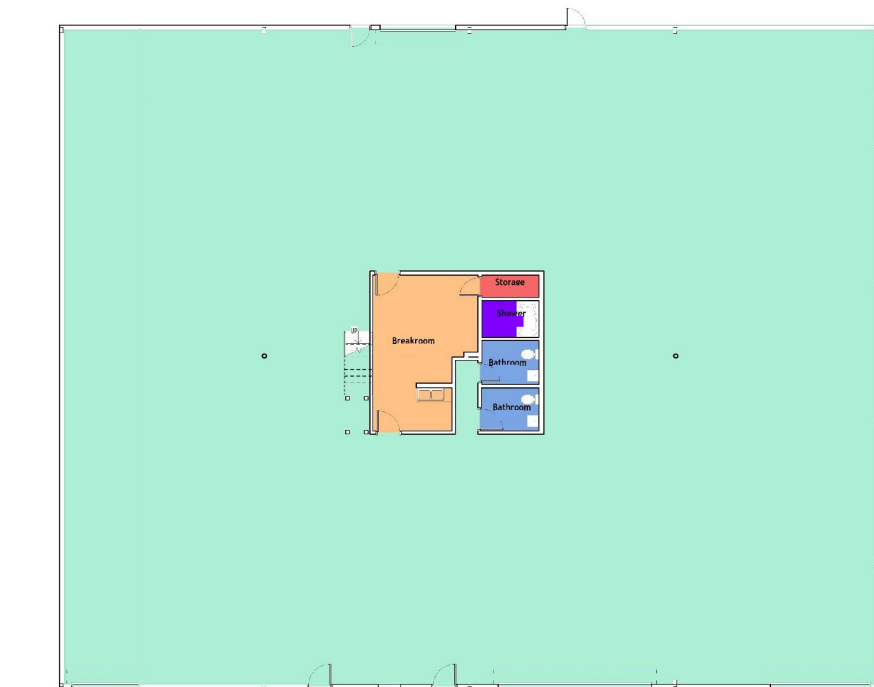
1600 NORTHSIDE DRIVE NW  
Suite 100  
ATLANTA, GA 30318  
404.352.1882  
WHNRE.COM

Conner Dickinson | Associate  
C: 770.542.7917  
cdickinson@whnre.com

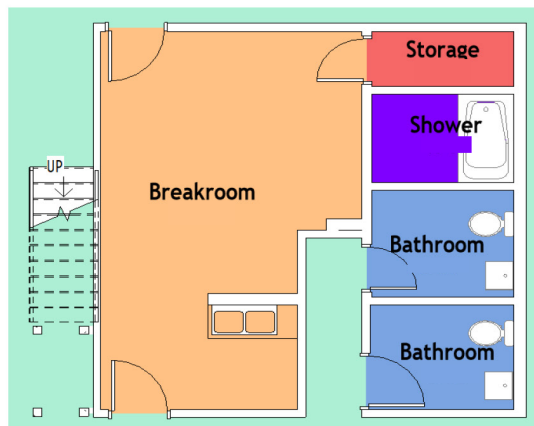
Preston Pannell | Associate  
C: 404.877.2178  
ppannell@whnre.com

Every effort has been made to provide accurate information, but no liability is assumed for errors or omissions.

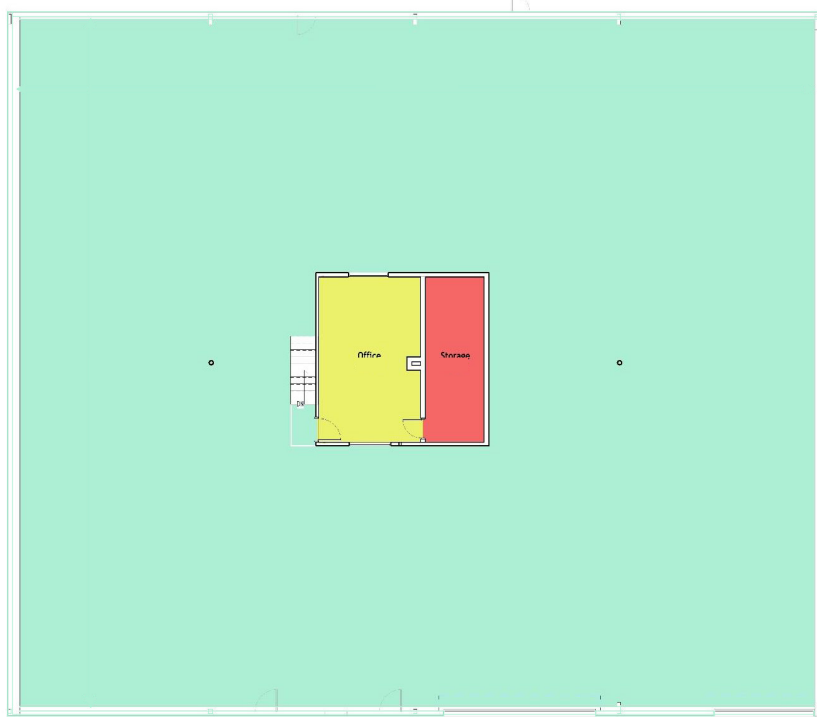
# 3619 Cantrell Industrial Ct | Acworth, GA 30101



- Bathroom
- Breakroom
- Main Area
- Shower
- Storage



Level 1



- Main Area
- Office
- Storage



Level 2

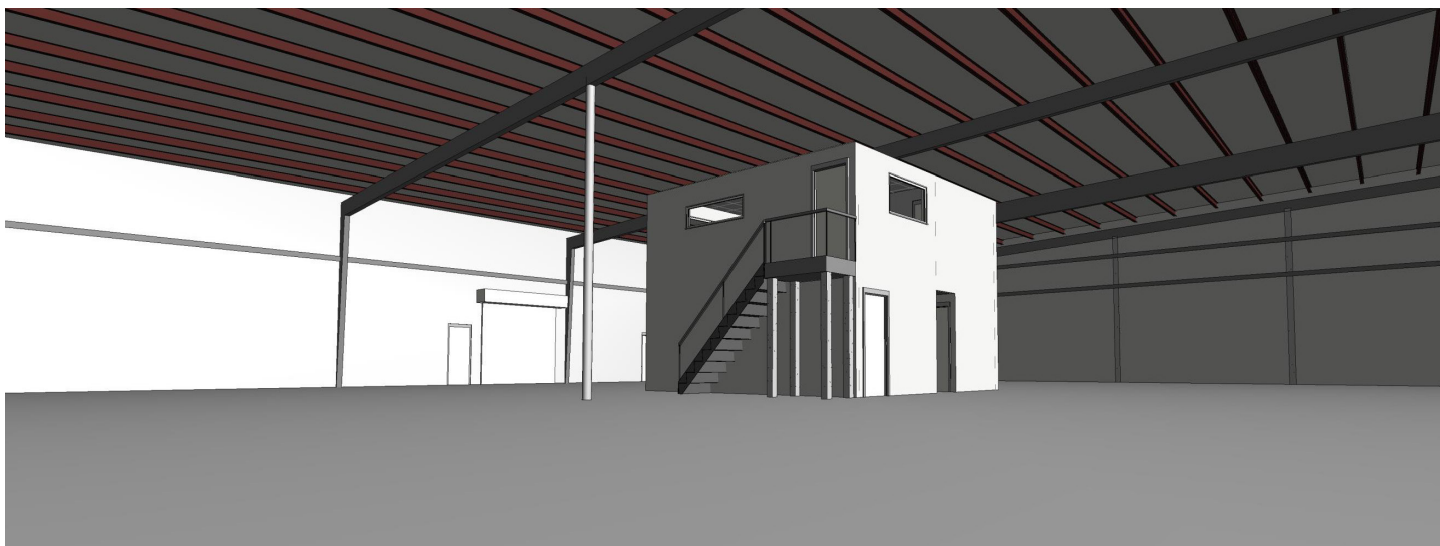
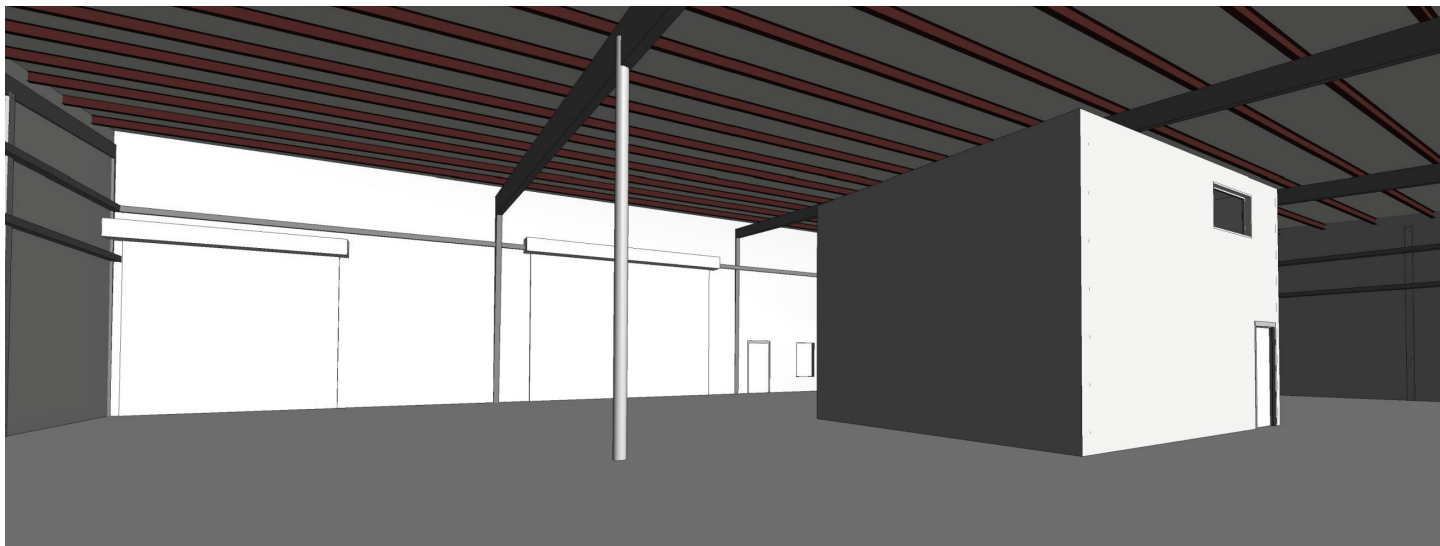


1600 NORTHSIDE DRIVE NW  
Suite 100  
ATLANTA, GA 30318  
404.352.1882  
WHNRE.COM

Conner Dickinson | Associate  
C: 770.542.7917  
cdickinson@whnre.com

Preston Pannell | Associate  
C: 404.877.2178  
ppannell@whnre.com

# 3619 Cantrell Industrial Ct | Acworth, GA 30101



**WILSON  
HULL  
& NEAL**  
REAL ESTATE, LLC

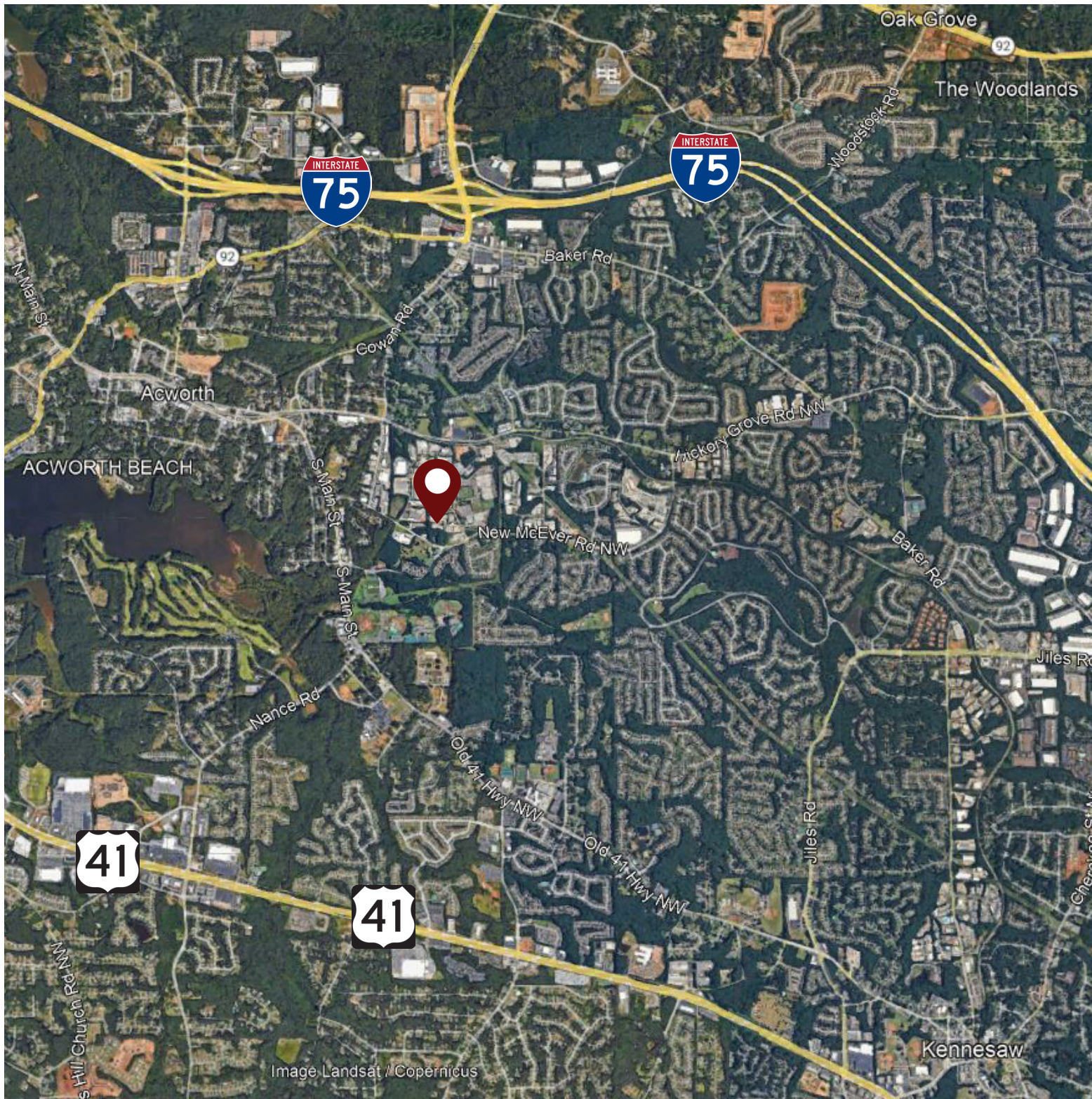
1600 NORTHSIDE DRIVE NW  
Suite 100  
ATLANTA, GA 30318  
404.352.1882  
WHNRE.COM

Conner Dickinson | Associate  
C: 770.542.7917  
cdickinson@whnre.com

Preston Pannell | Associate  
C: 404.877.2178  
ppannell@whnre.com

Every effort has been made to provide accurate information, but no liability is assumed for errors or omissions.

# 3619 Cantrell Industrial Ct | Acworth, GA 30101



1600 NORTHSIDE DRIVE NW  
Suite 100  
ATLANTA, GA 30318  
404.352.1882  
WHNRE.COM

Conner Dickinson | Associate  
C: 770.542.7917  
cdickinson@whnre.com

Preston Pannell | Associate  
C: 404.877.2178  
ppannell@whnre.com

Every effort has been made to provide accurate information, but no liability is assumed for errors or omissions.