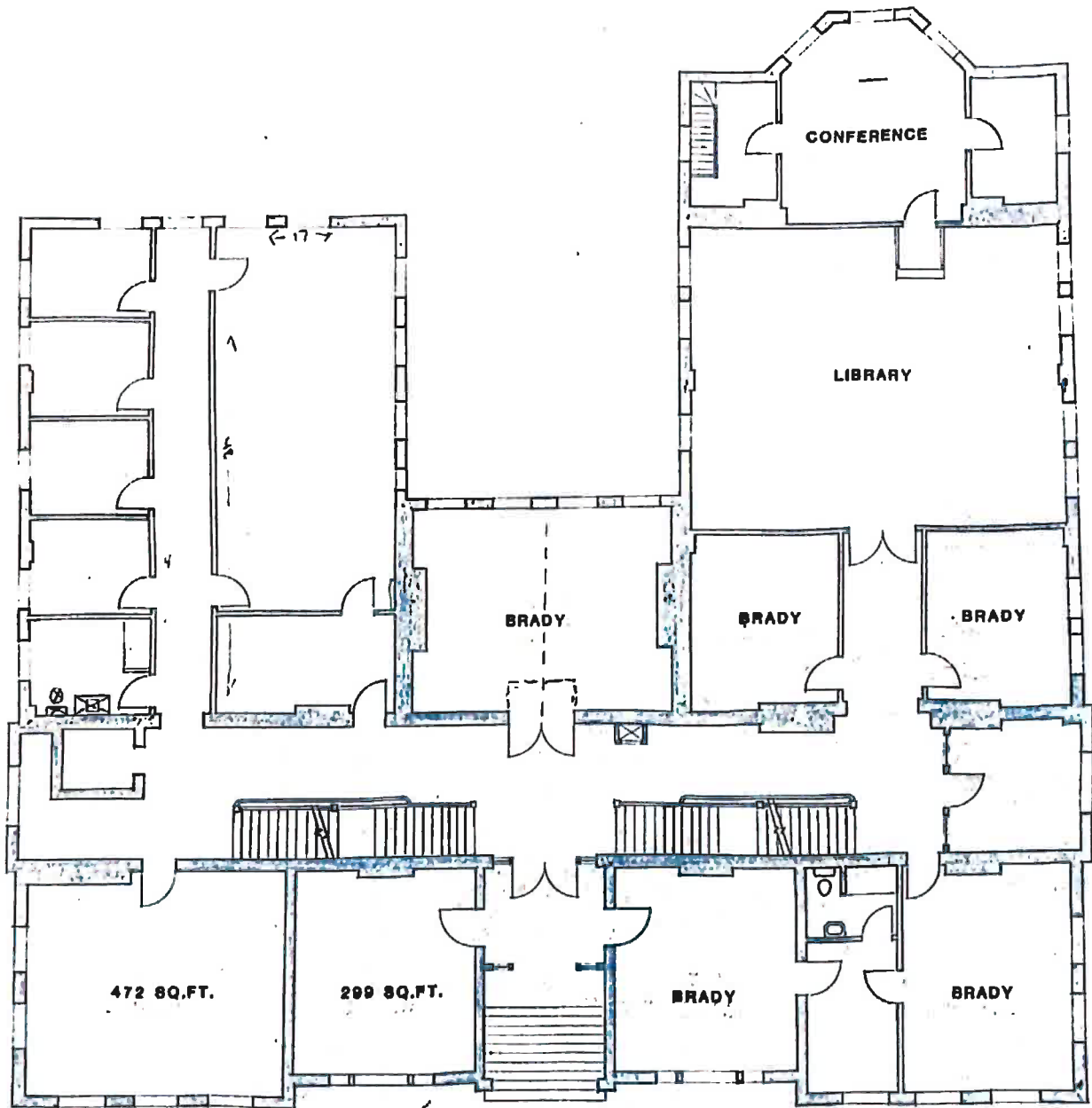


**GROUND FLOOR**

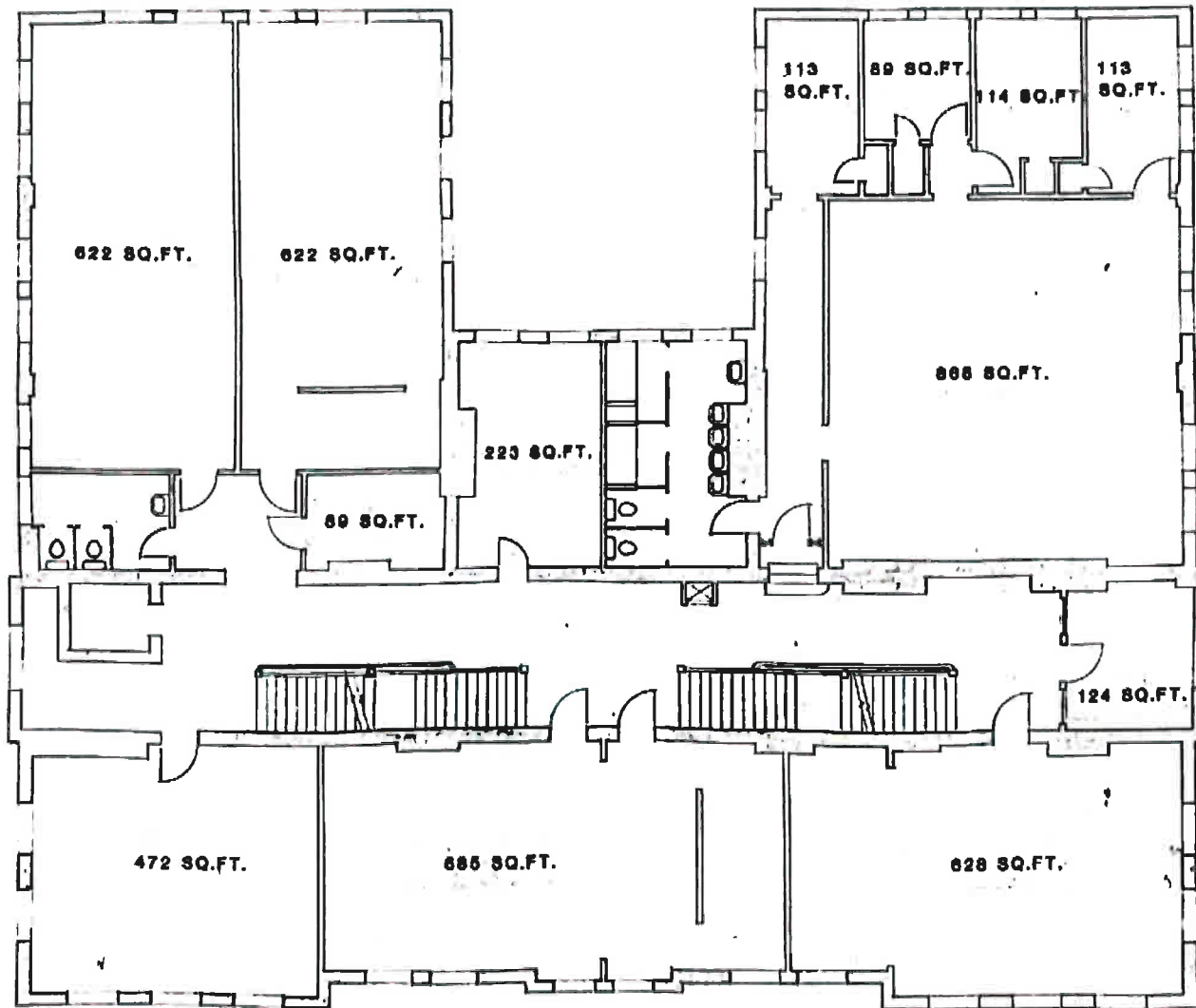
SCALE: 1/8"=1'-0"



# FIRST FLOOR

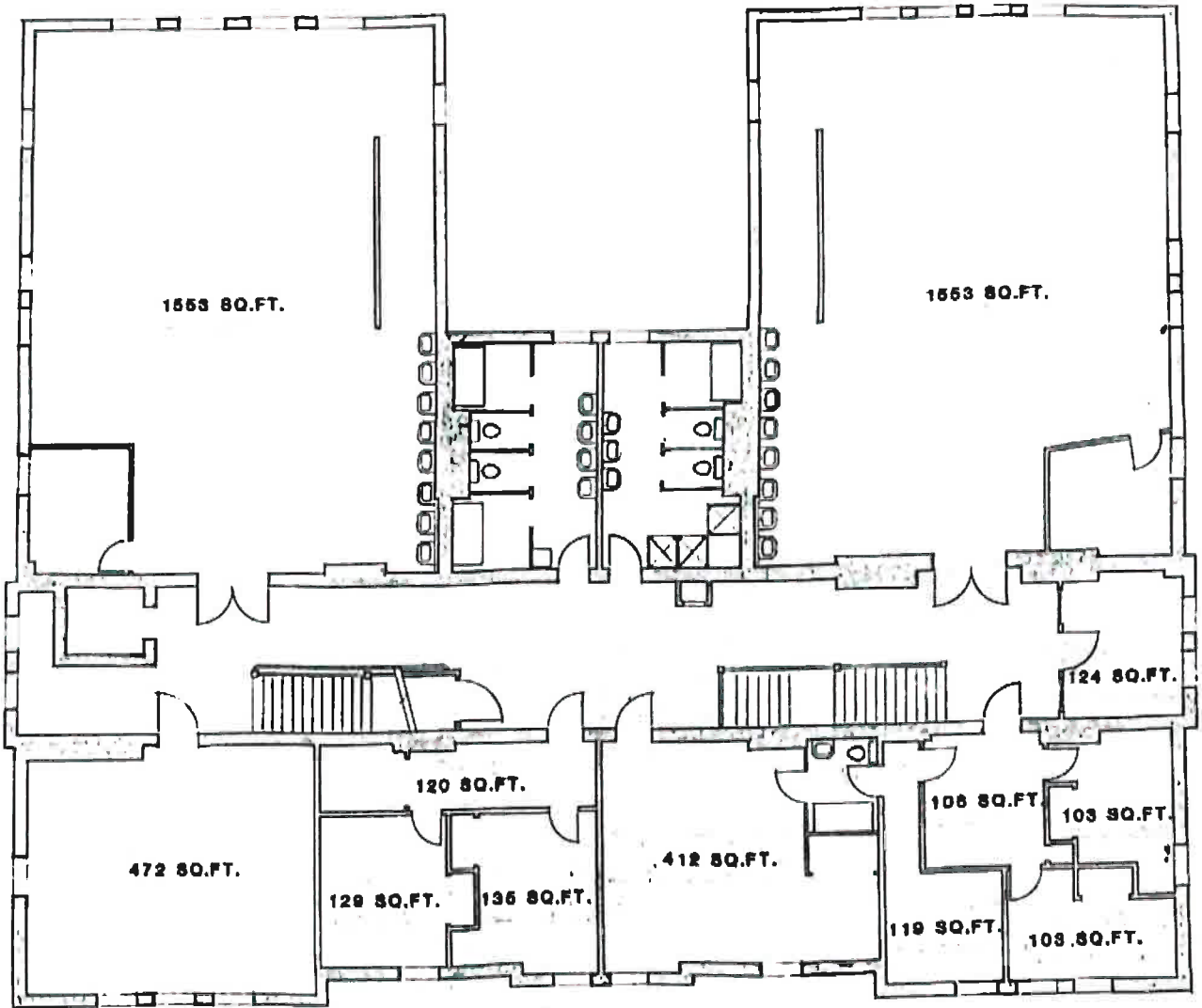
SCALE: 1/8"=1'-0"

CS Scanned with CamScanner



**SECOND FLOOR**

SCALE: 1/8"=1'-0"



**THIRD FLOOR**

SCALE: 1/8"=1'-0"



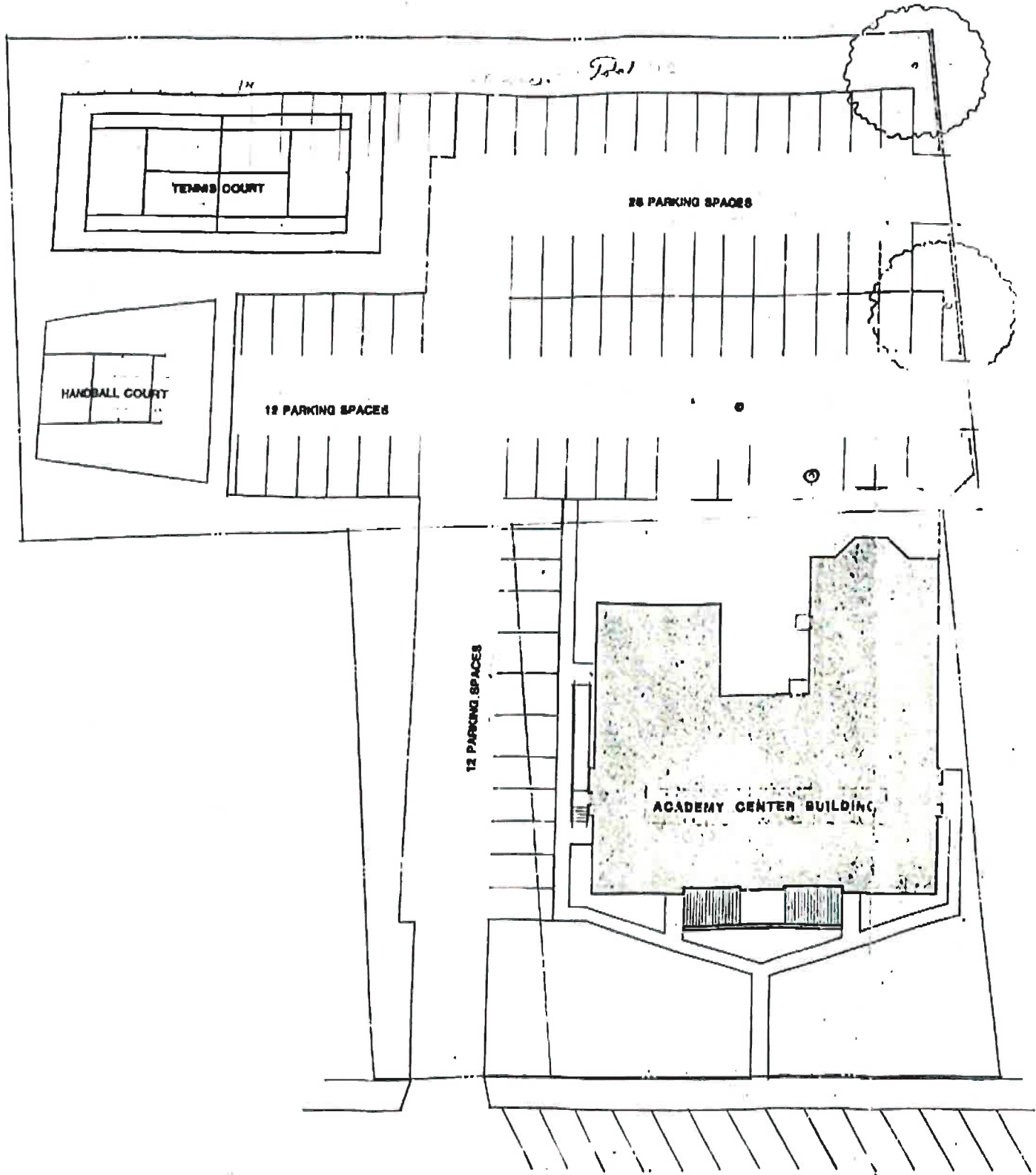
# BASEMENT

TOTAL: 238 sq. ft

FLOOR 1: 238 sq. ft

EXCLUDED AREAS: UNFINISHED BASEMENT: 3260 sq. ft, STORAGE: 2609 sq. ft, HALL: 1177 sq. ft

MEASUREMENTS ARE CALCULATED BY CUBICASA TECHNOLOGY; DEEMED HIGHLY RELIABLE BUT NOT GUARANTEED.



Total 112

TENNIS COURT

26 PARKING SPACES

HANDBALL COURT

12 PARKING SPACES

12 PARKING SPACES

ACADEMY CENTER BUILDING

