



Unit 5206
5,948 SF
Now Available

Unit 5202
6,000 SF
Now Available

Two Small Bay Warehouse Spaces Available For Lease

5200-5300 Minnick Road, Laurel, MD



John Dettleff
703.485.8831
john.dettleff@jll.com

Sam Haas
443.878.3499
sam.haas@jll.com

5202 Minnick Rd

- **SF: 6,000 SF available**
- **Loading: 12' high roll-up door**
- **Clear Height: 17' 7"**
- **Parking: 4.00/1,000 SF**
- **Layout: 17'7" ft warehouse, two (2) private offices, one (1) conference room, and one (1) kitchen**
- **Available: Now Available**

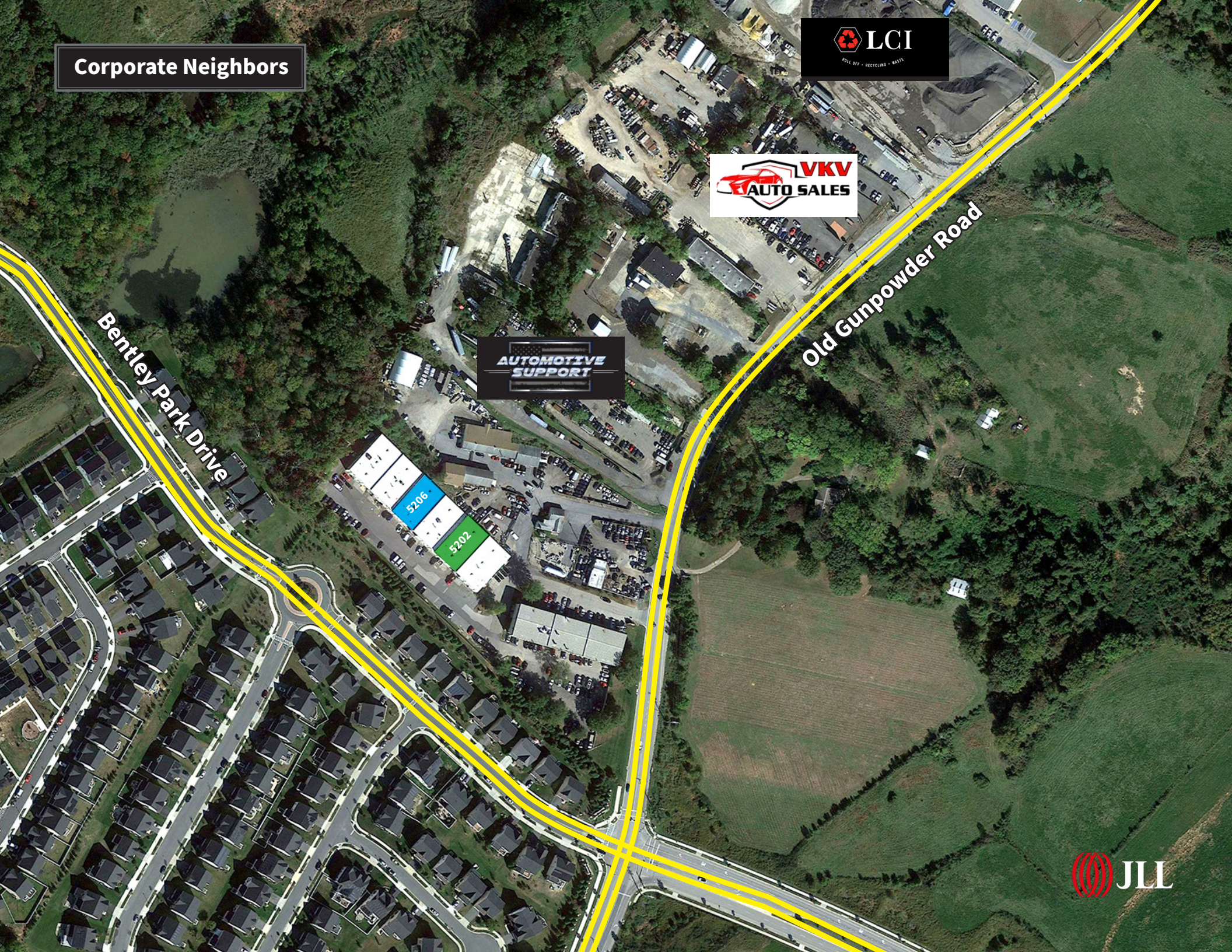
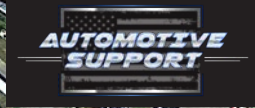


5206 Minnick Rd

- **SF: 5,948 SF available**
- **Loading: 12' high roll-up door**
- **Clear Height: 17' 7"**
- **Parking: 4.00/1,000 SF**
- **Layout: Two (2) offices, two (2) bathrooms, and one (1) kitchen**
- **Available: Now Available**



Corporate Neighbors



5206
5202





For more information, please contact the JLL Mid-Atlantic Industrial Brokerage Team:



John Dettleff
703.485.8831
john.dettleff@jll.com

Sam Haas
443.878.3499
sam.haas@jll.com