

FOR LEASE

+/- 34,300 SF
Available Now 2025



Property Overview:

- +/- 34,300 total sqft
- Lot Size: 2.0 Usable Acres
- Zoned: LI
- NNN
- 1 Floors of Office: +/- 2,400 sqft
- Warehouse: +/- 31,900 sqft

Property Highlights:

- Locally Owned & Managed
- 5 Drive in Doors (14x11')
- 1.2 miles HWY 575 Access
- Recently Renovated in 2024

Property available for lease now! Spacious industrial area, perfect for manufacturing, warehousing, distribution, or for company headquarters. Excellent location just off Route 411 & 27. Very upscale open office buildout, plus additional warehouse.

For More Information Contact:

Gabe Hrib Jr. | jrghrib@gmcapitalllc.com | 404-771-9167

Property Exterior Photos:



For More Information Contact:

Gabe Hrib Jr. | jrghrib@gmcapitalllc.com | 404-771-9167

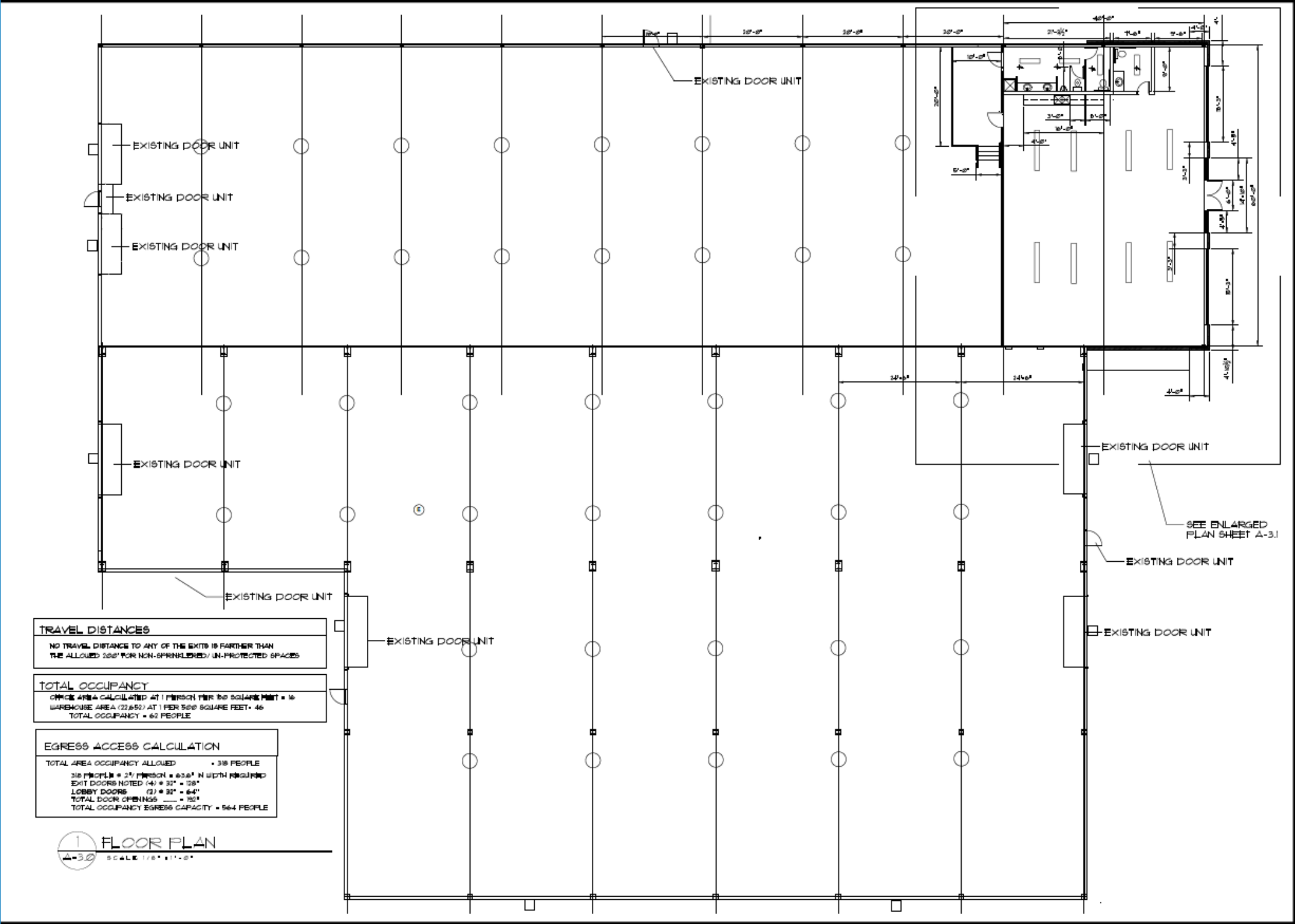
Property Interior Photos:



For More Information Contact:

Gabe Hrib Jr. | jrghrib@gmcapitalllc.com | 404-771-9167

Main Floor Office



For More Information Contact:

Gabe Hrib Jr. | jrghrib@gmcapitalllc.com | 404-771-9167

Contat Info:

Gabe Hrib Jr.
Director of Real Estate



678-909-8000 (office)
404-771-9167 (cell)



jrghrib@gmcapitalllc.com



120 Hickory Springs Industrial
Dr Holly Springs, GA 30115

COGMCAPITAL
DEVELOPMENT AND LEASING