

8,579 SF Warehouse Condo For Sale & Lease

3775 Park Avenue, Unit 11, Edison, NJ



PROPERTY FEATURES

- Total Available +/- 8,579 SF
- Office Space +/- 1,840 SF
- Ceiling Height 24'
- Loading 1 Oversized Drive-In
- Power 480 Volt / 3-Phase
- Sale Price \$275 PSF
- Lease Rate \$16.75 PSF Net
- Taxes & CAM \$3.37 PSF
- Notes A/C – Central Heating
DDA Compliant
Security System
Private Restrooms
Shower Facilities

LOCATION

- Close proximity to I-287, NJ Turnpike and Garden State Parkway
- 8 Minutes to Northeast Corridor Commuter Line

For More Information Call Exclusive Broker:

Jeffrey Goldfinger, Vice President | 908.405.7447 | jgoldfinger@bussel.com

Bussey Realty Corp. | 2 Ethel Road, Suite 202A, Edison, NJ 08817 | 732.287.3777 | Bussel.com

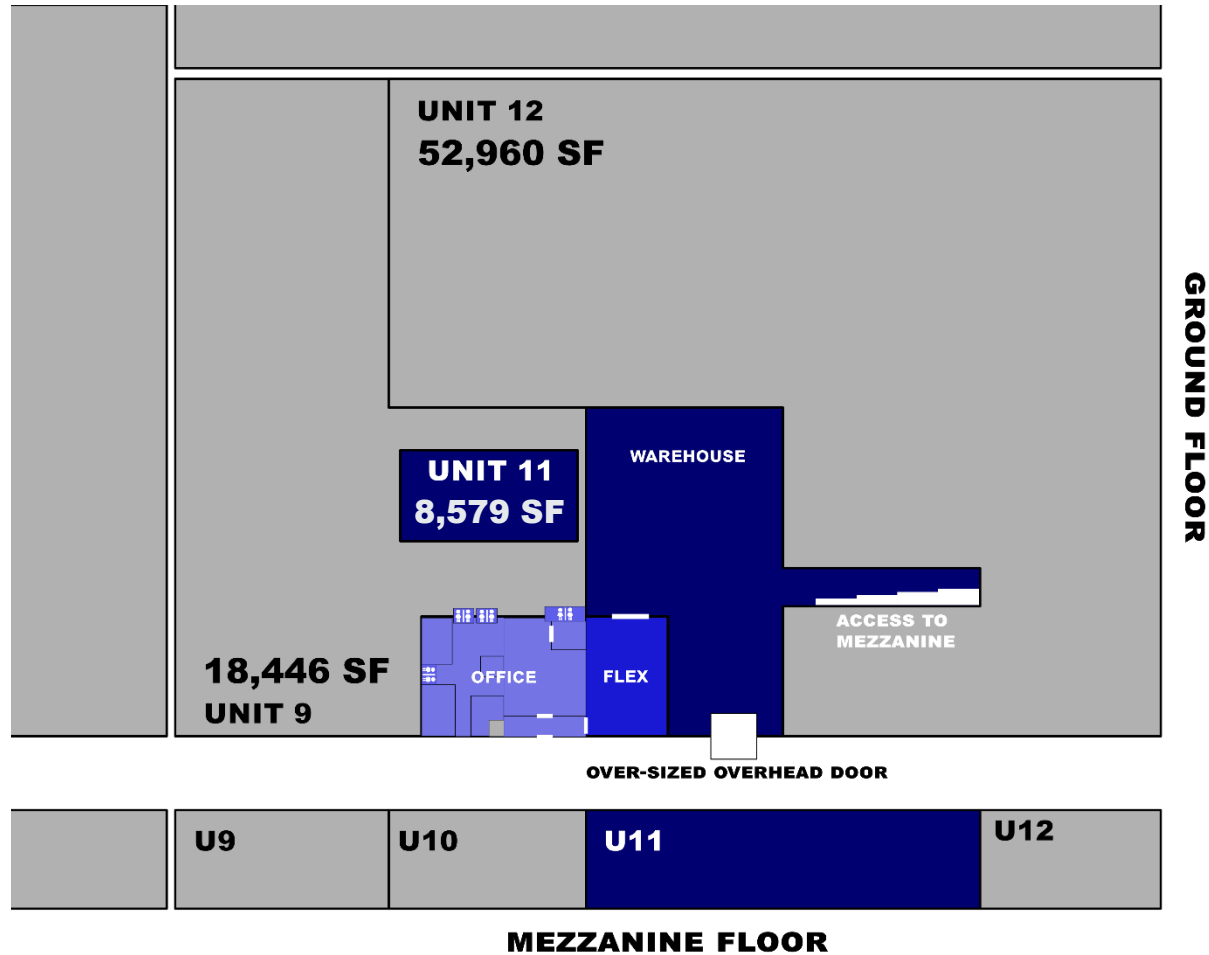
Information herein obtained from sources deemed reliable, but no guarantee of its accuracy is made by the Company. Subject to error, omission or withdrawal without notice.

8,579 SF Warehouse Condo For Sale & Lease



3775 Park Avenue, Unit 11, Edison, NJ

FLOOR PLAN



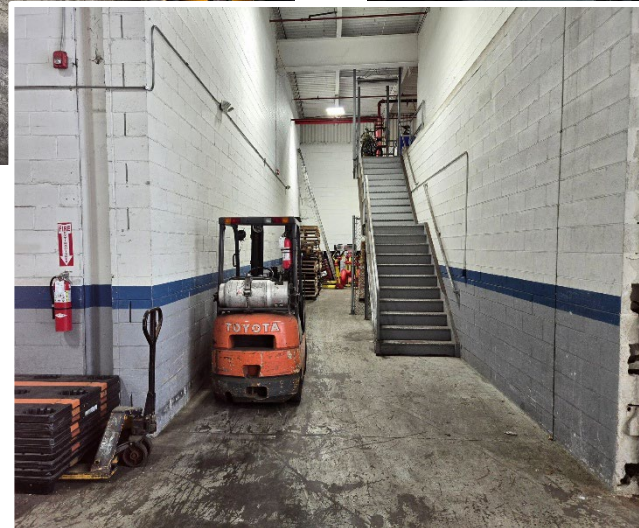
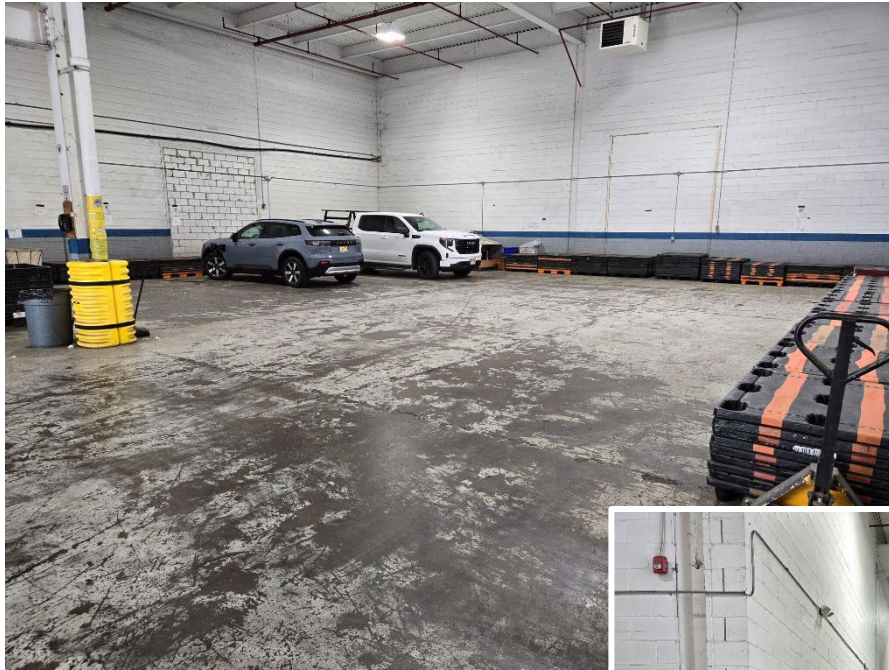
For More Information Call Exclusive Broker:

Jeffrey Goldfinger, Vice President | 908.405.7447 | jgoldfinger@bussel.com

Information herein obtained from sources deemed reliable, but no guarantee of its accuracy is made by the Company. Subject to error, omission or withdrawal without notice.

8,579 SF Warehouse Condo For Sale & Lease

3775 Park Avenue, Unit 11, Edison, NJ



For More Information Call Exclusive Broker:

Jeffrey Goldfinger, Vice President | 908.405.7447 | jgoldfinger@bussel.com

Information herein obtained from sources deemed reliable, but no guarantee of its accuracy is made by the Company. Subject to error, omission or withdrawal without notice.