

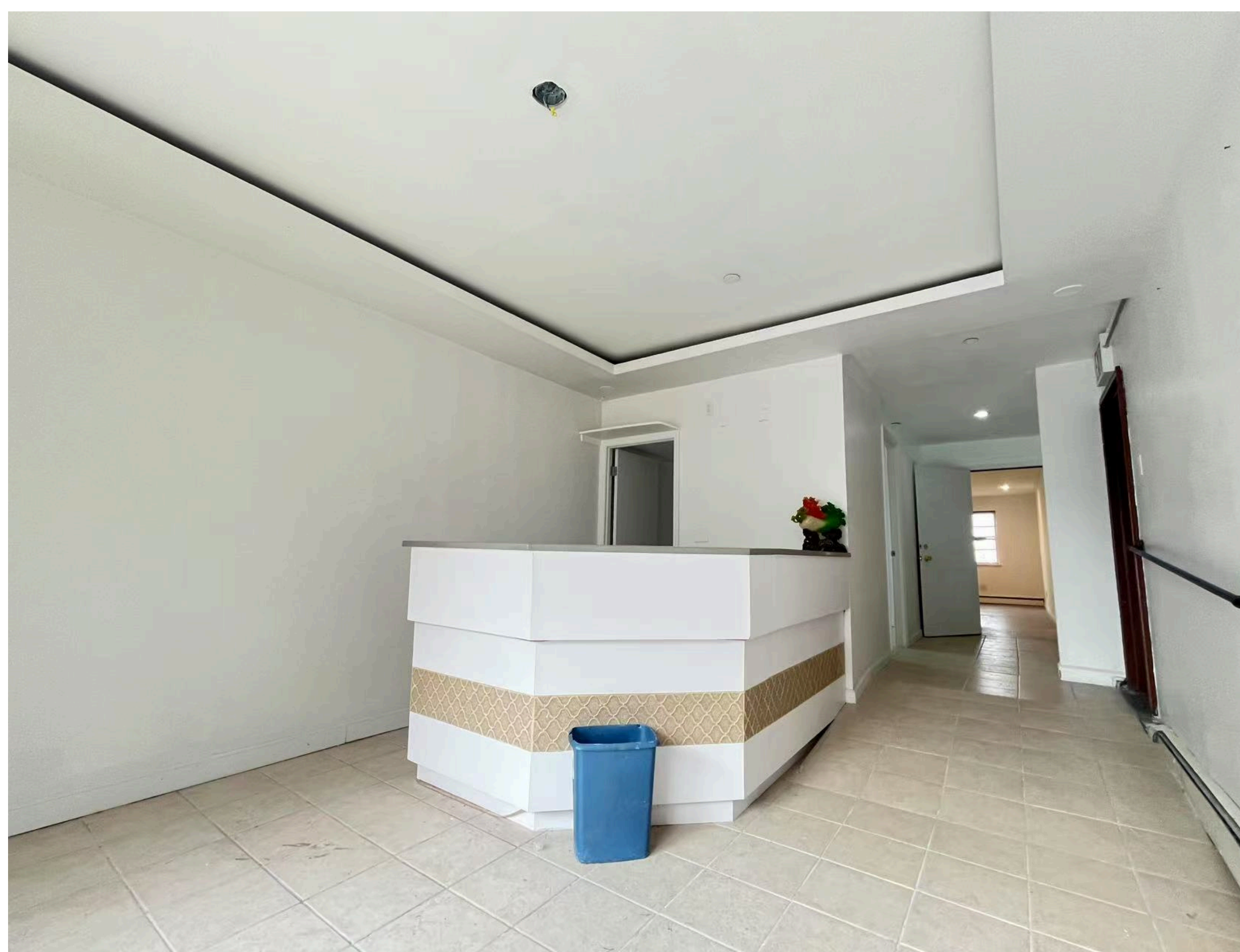
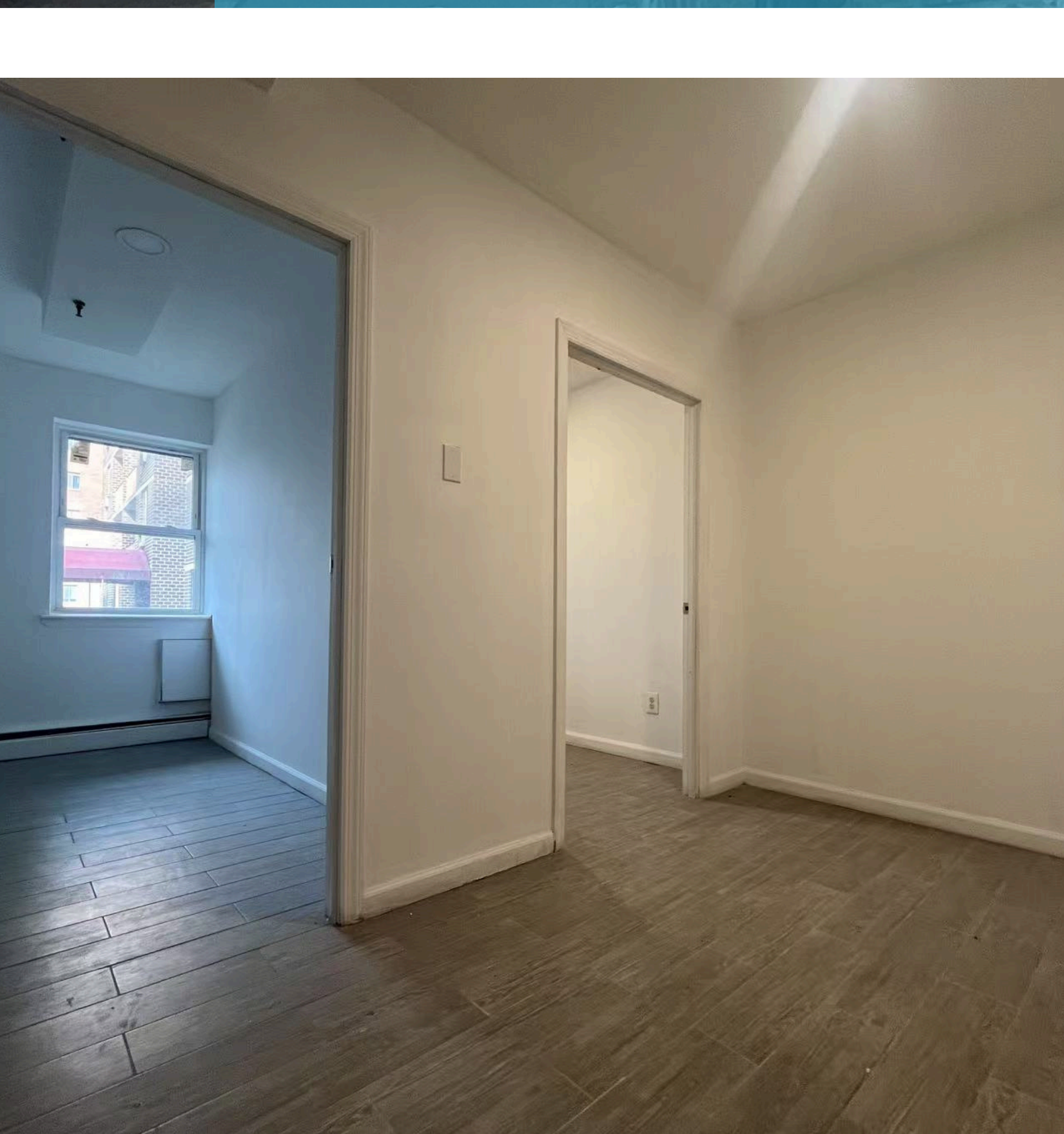


LIN PAN REALTY

142-01 37 AVE FLUSHING

1000 SF | Ground Fl | Medical

ASKING RENT
\$6,900



LEASE HIGHLIGHTS

- Corner of Union St & 37 Ave
- Highly Visible Ground Floor Corner Space
- Fully Built-Out as Medical Office Use
- 1000 SF RSF, Built in 1982, Zoning R6
- Steps Away from Subway, Bus & Parking

ABOUT THE PROPERTY

Built in 1982 with Union street intersection & sign visibility, heavy foot and car traffic daily, the unit is fully built out as a medical office with a front desk, 3 treatment rooms, an open space and a private bathroom. It is a perfect space for high volume business in the prime location.

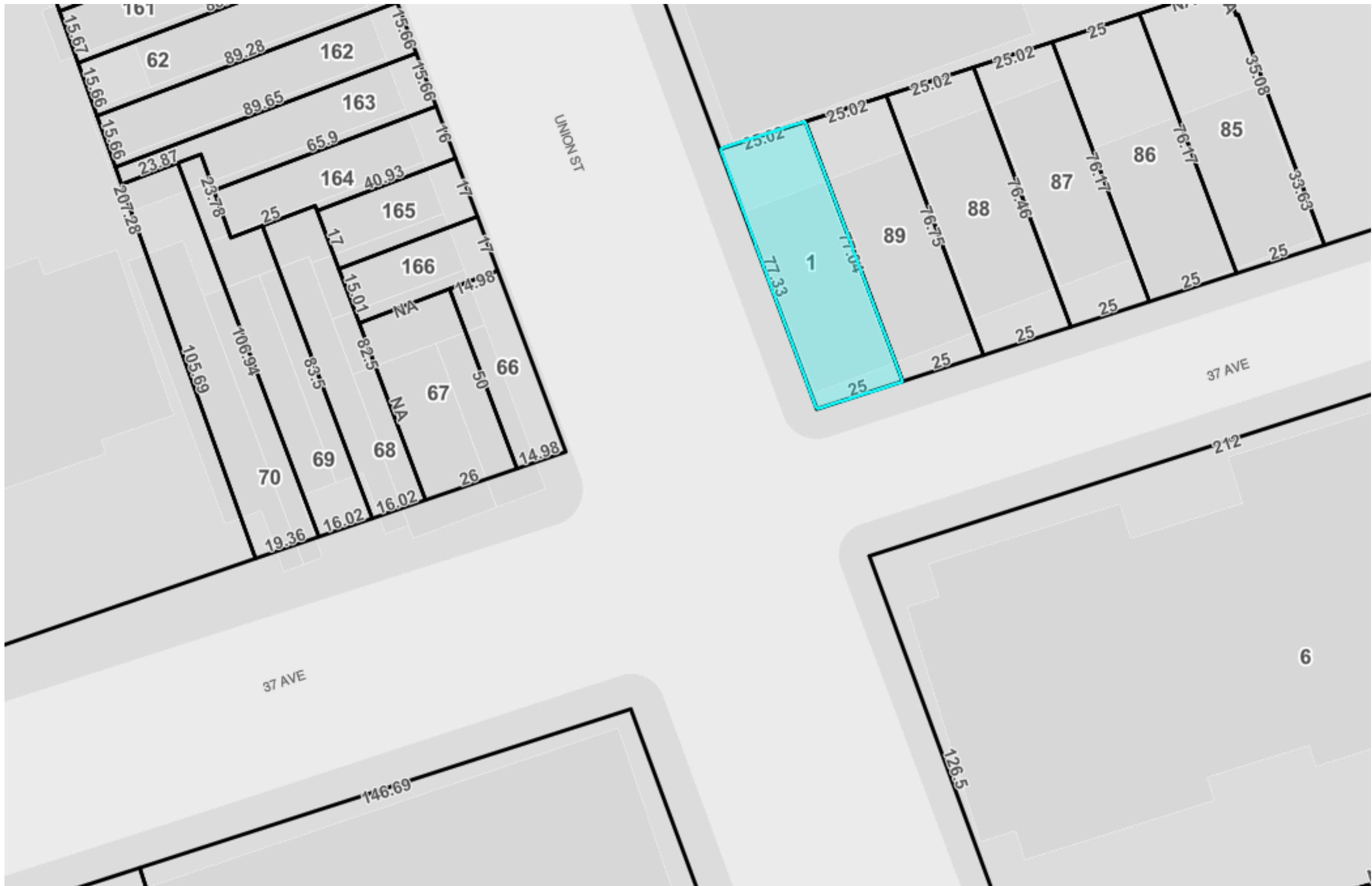
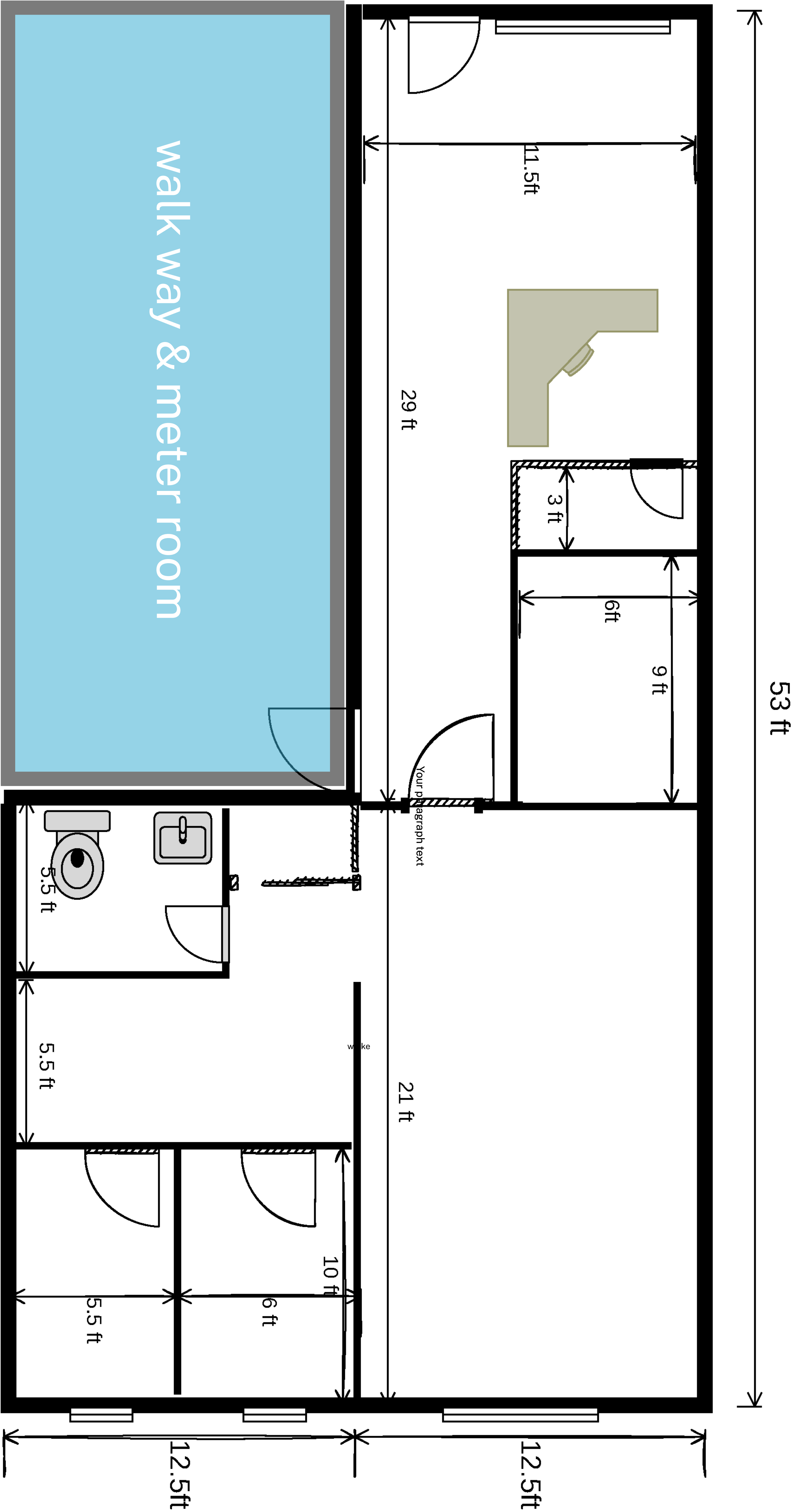
LIN PAN REALTY

5 Bond St, #201, Great Neck, NY 11021
516-693-9888 | www.linpanrealty.com

37th Avenue

Union Street

142-01 37 Ave, 1st Floor

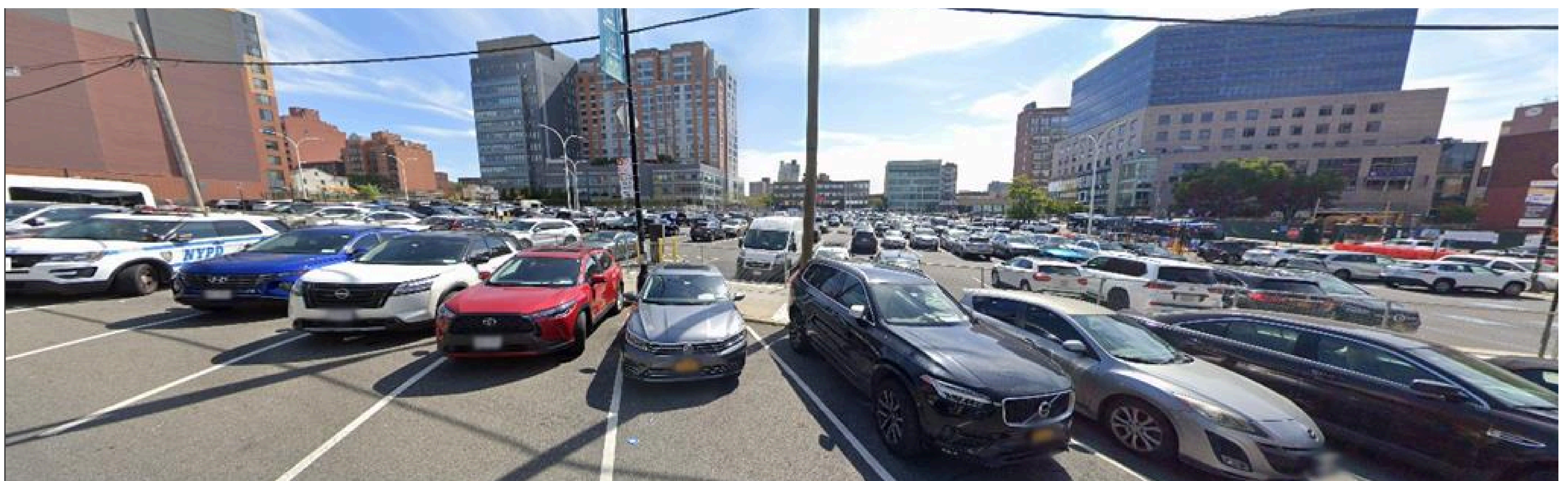
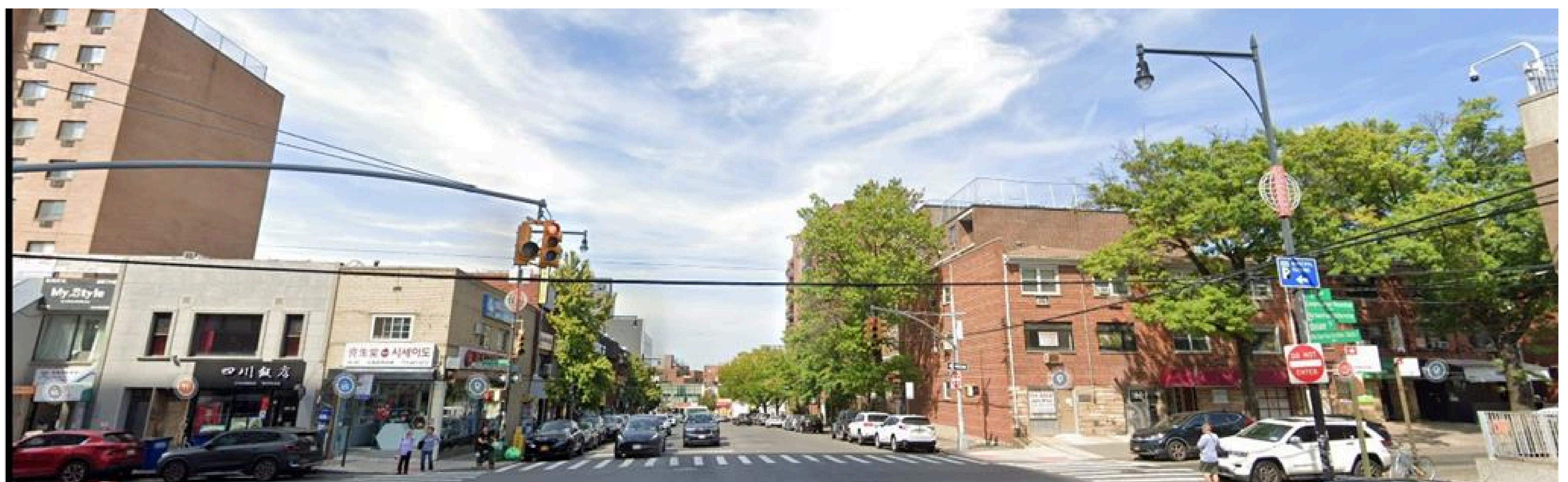
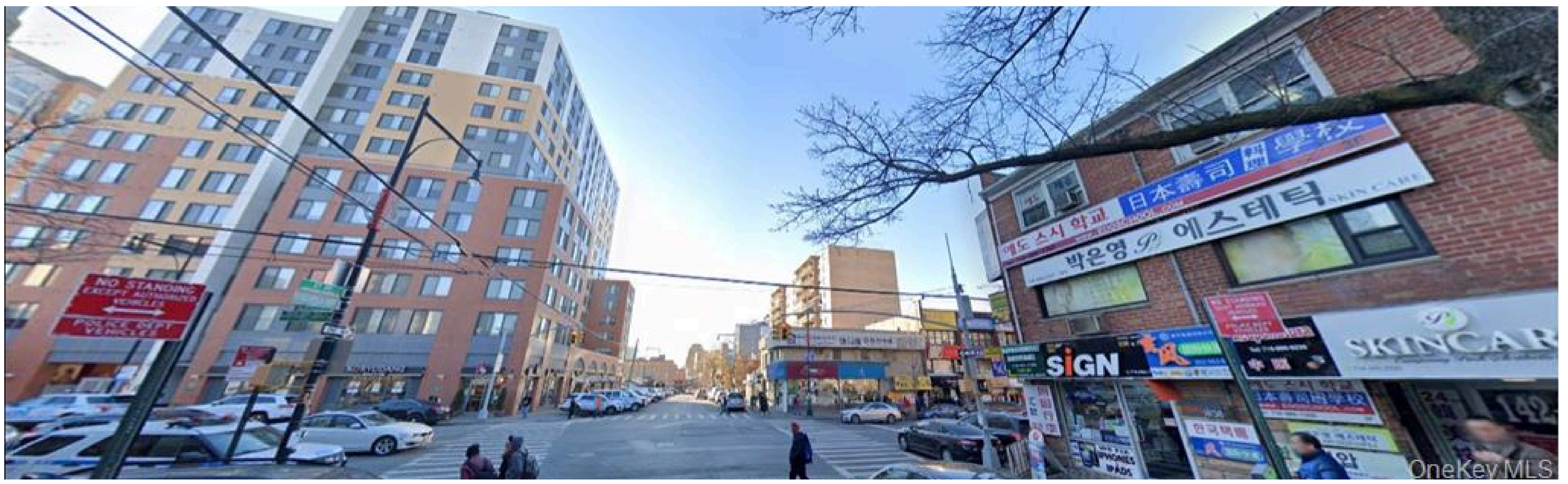


CONTACT US

Derek Zheng **917.902.3898**
derek@linpanrealty.com

LIN PAN REALTY

5 Bond St, #201, Great Neck, NY 11021
516-693-9888 | www.linpanrealty.com



CONTACT US

Derek Zheng **917.902.3898**
derek@linpanrealty.com

LIN PAN REALTY

5 Bond St, #201, Great Neck, NY 11021
 516-693-9888 | www.linpanrealty.com