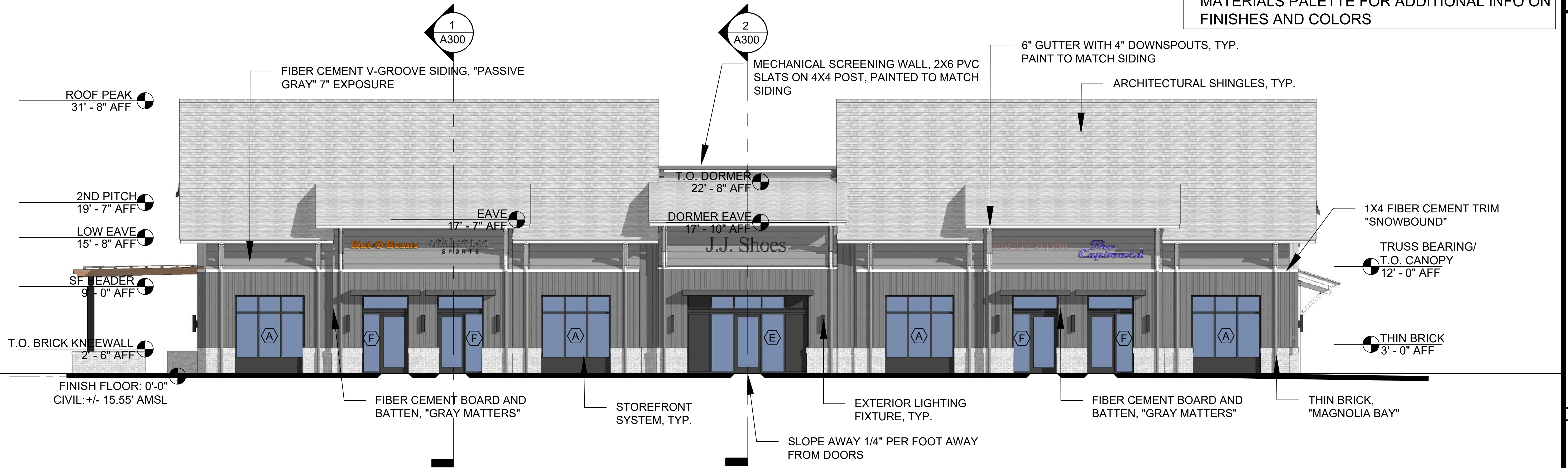


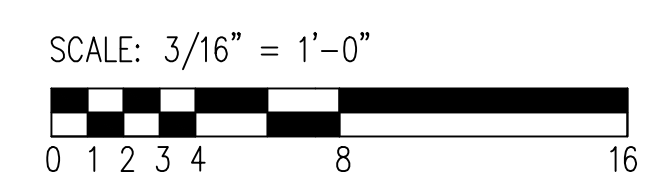
1 NORTH ELEVATION (FRONT) FACING PARKING LOT AND BLDG "D"
SCALE: 3/16" = 1'-0"

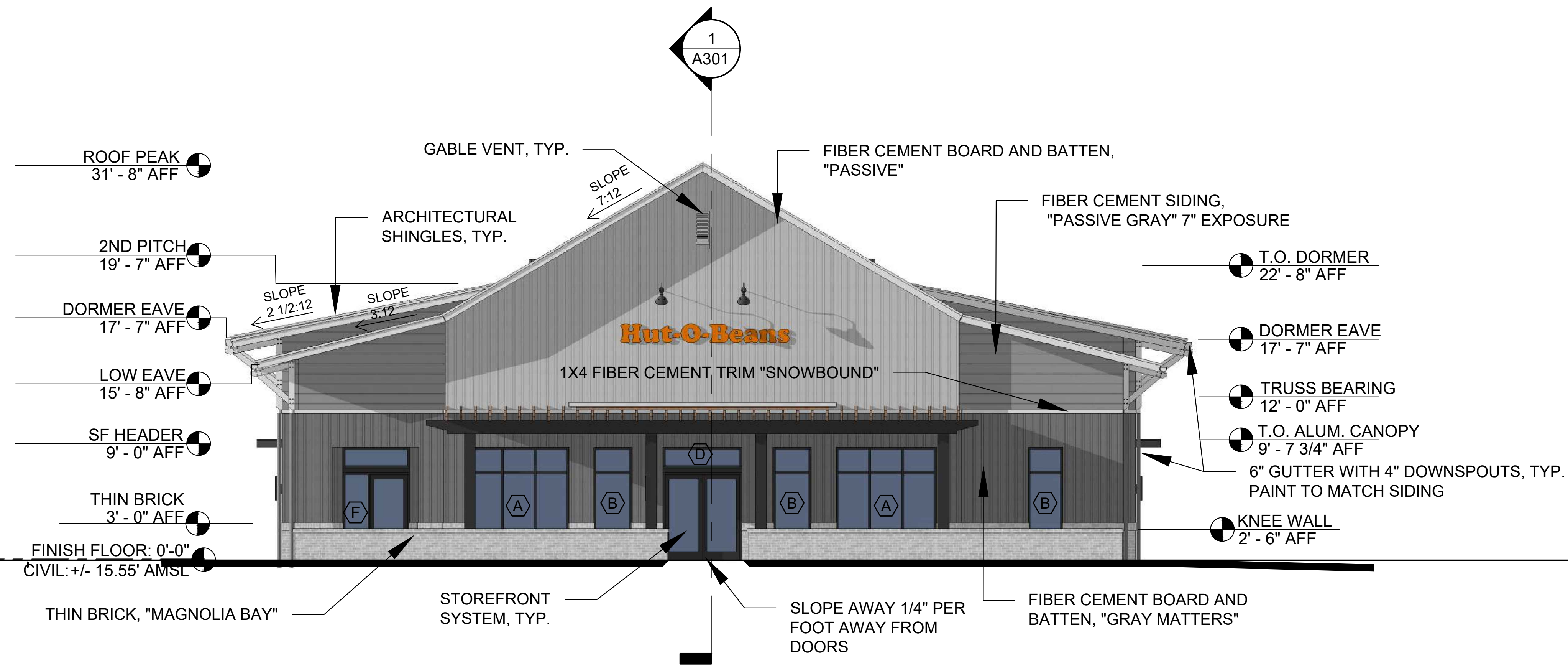
NOTE: SIGNAGE BY OTHERS

SEE TOMP FINAL DRB APPROVED EXTERIOR MATERIALS PALETTE FOR ADDITIONAL INFO ON FINISHES AND COLORS



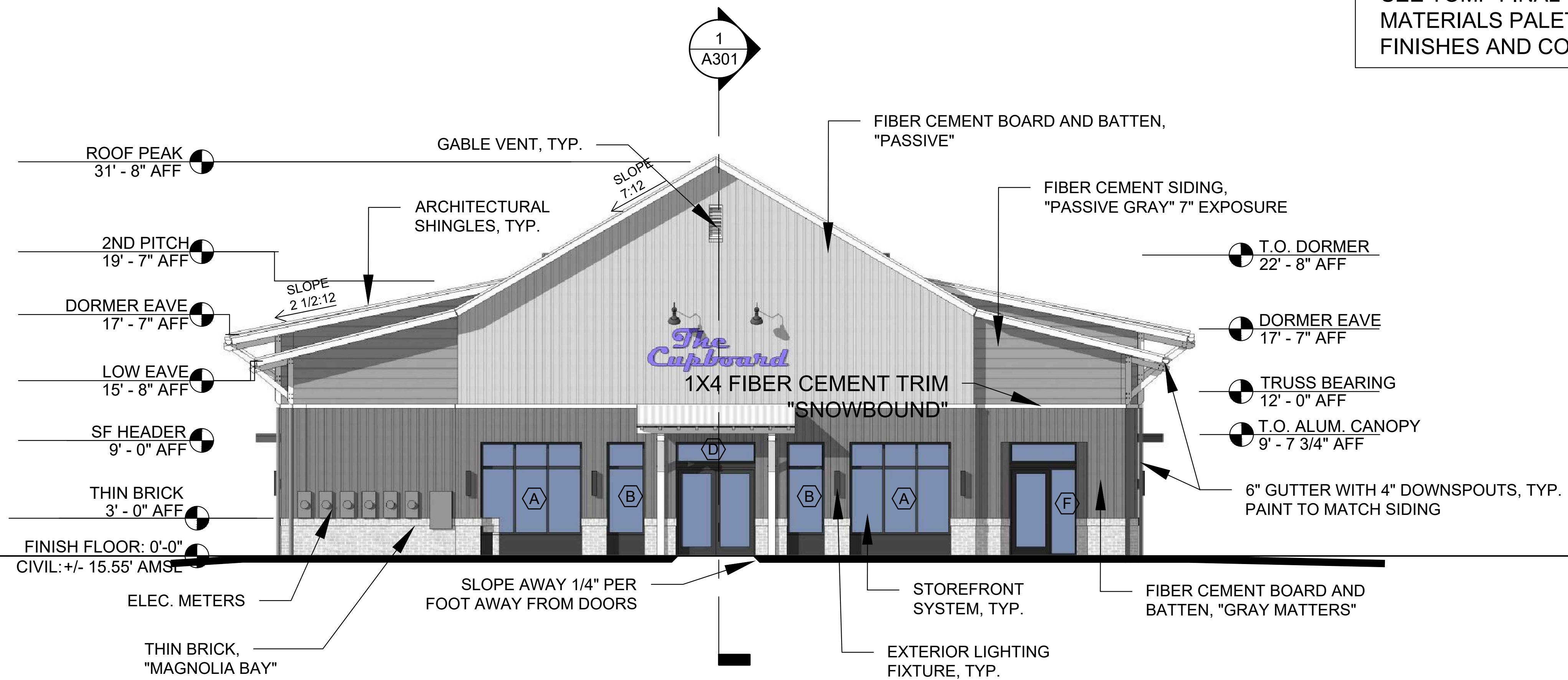
2 SOUTH ELEVATION FACING HWY 17
SCALE: 3/16" = 1'-0"





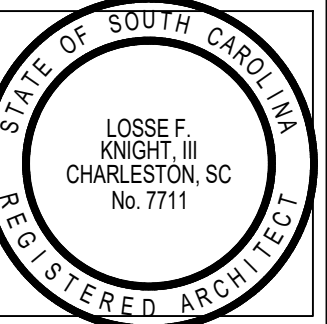
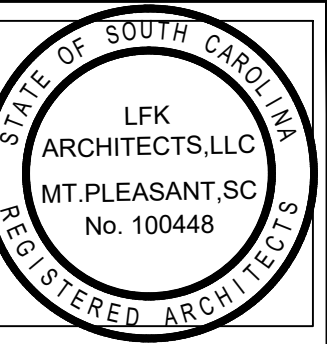
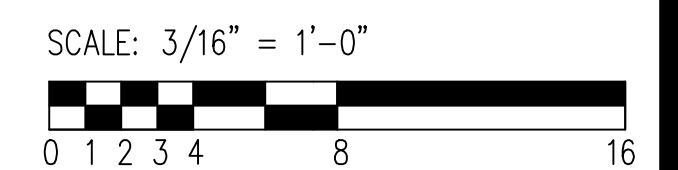
1 WEST ELEVATION- SIDE FACING PATIO AND PARKING LOT
 SCALE: 3/16" = 1'-0"

NOTE: SIGNAGE BY OTHERS



2 EAST ELEVATION (SIDE) FACING ENTRY DRIVE AND BLDG "B"
 SCALE: 3/16" = 1'-0"

SEE TOMP FINAL DRB APPROVED EXTERIOR MATERIALS PALETTE FOR ADDITIONAL INFO ON FINISHES AND COLORS



LFK ARCHITECTS
 Land Planning + Feasibility Studies
 Commercial + Residential Design
 www.lfkarchitect.com
 LFK ARCHITECTS, LLC
 886 JOHNNIE DODDS BLVD
 SUITE 200
 MOUNT PLEASANT, SC 29464
 LOSSE F. KNIGHT III, AIA, NCARB
 losse@lfkarchitect.com
 phone: 843-330-8940

JOB NUMBER: 000	DRAWN: AJR	CHECKED: LFK
-----------------	------------	--------------

REVISION NOTES:

HIGHWAY 17 RETAIL VILLAGE BUILDING "B"
 TMS: 559-13-00-041
 MOUNT PLEASANT, SC
 EAST & WEST BUILDING ELEVATIONS

SHEET NUMBER & TITLE:

A201

PERMIT / CONSTRUCTION DRAWINGS
 02.27.2026