



Class 'A' Sublease 3,951 Total RSF

Sublease Information:

- Suite: 200
- 3,951 RSF
- Sublease through October 31, 2025
- Rate: \$19.50 PSF 'Full Service'
- Parking: Surface parking with no charge
- Building built in 2018

Get more information

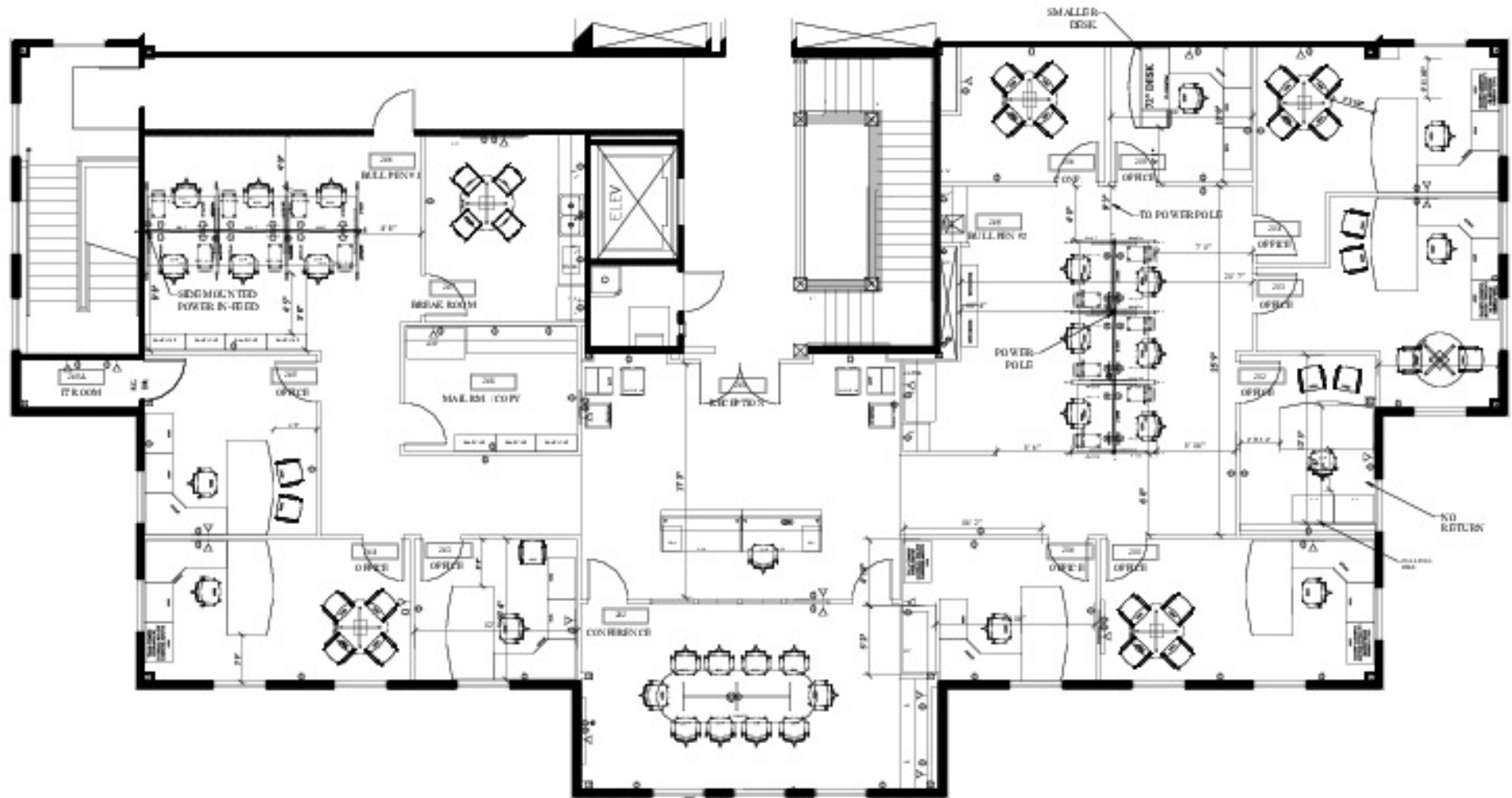
[Josh LaRocca, SIOR](#)

Principal

D 713 993 7171

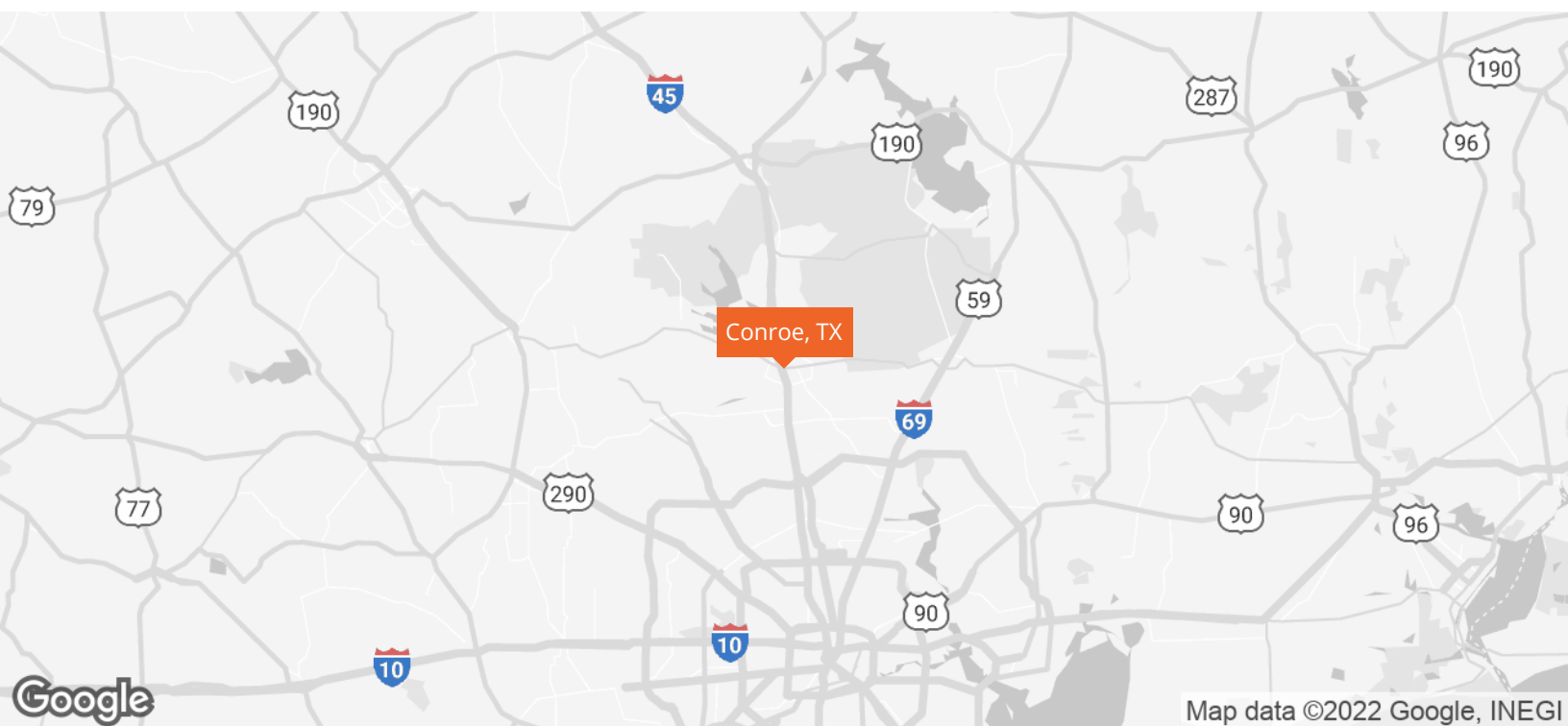
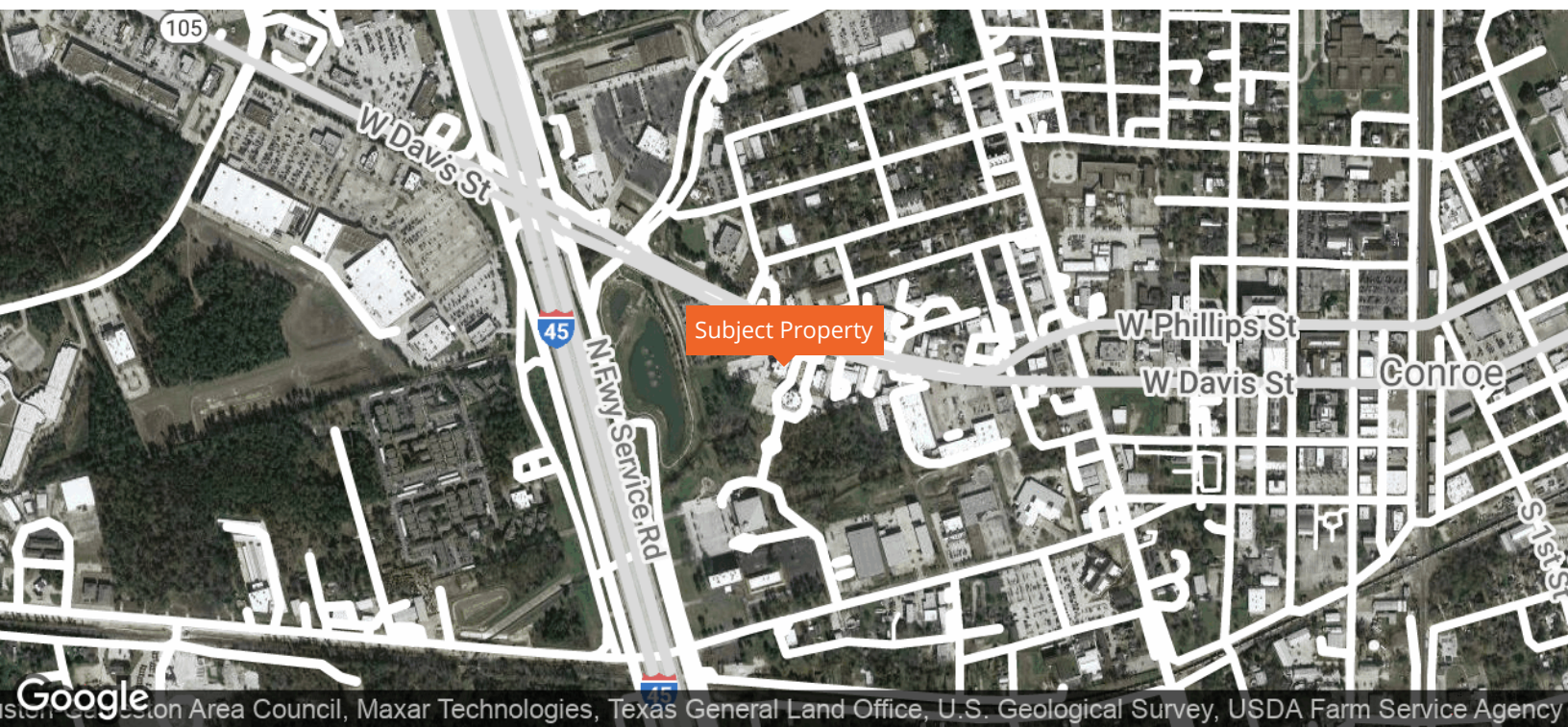
josh.larocca@avisonyoung.com





Office building sublease

1824 Spirit of Texas Way



**AVISON
YOUNG**

Josh LaRocca, SIOR

Principal

D 713 993 7171

josh.larocca@avisonyoung.com

Avison Young - Houston | 4400 Post Oak Pkwy., Suite 1500 | Houston, TX 77027

© 2022. Avison Young - Houston. Information contained herein was obtained from sources deemed reliable and, while thought to be correct, have not been verified.

Avison Young - Houston does not guarantee the accuracy or completeness of the information presented, nor assumes any responsibility or liability for any errors or omissions therein.

Office building sublease

1824 Spirit of Texas Way



**AVISON
YOUNG**

Josh LaRocca, SIOR

Principal

D 713 993 7171

josh.larocca@avisonyoung.com

Avison Young - Houston | 4400 Post Oak Pkwy., Suite 1500 | Houston, TX 77027

© 2022. Avison Young - Houston. Information contained herein was obtained from sources deemed reliable and, while thought to be correct, have not been verified.

Avison Young - Houston does not guarantee the accuracy or completeness of the information presented, nor assumes any responsibility or liability for any errors or omissions therein.