

FOR LEASE

1,500 - 7,000± SF RETAIL

7251 Theodore Dawes Rd | Theodore



PROPERTY DESCRIPTION:

- Available Space: 1,000 - 7,000 SF
- Pylon signage available
- Good visibility to Theodore Dawes Road with 100' frontage and over 23,000 cars per day (ALDOT, 2023)
- Less than 0.5 miles from I-10
- Proximate to South Alabama Logistics Park, which is a continually expanding industrial park with over 6 million SF of warehouse space planned
- The area features retail, single-family residential neighborhoods, multi-family residential developments, churches and schools.

Suite C/D: 1,500 SF

- Recently renovated with new HVAC, electrical and ADA-compliant restroom

Suites E-K: 7,000 SF

- New HVAC installed July 2024

CALL AGENT FOR LEASE RATES

Brandon Broadus

251.288.7786

bbroadus@cre-mobile.com

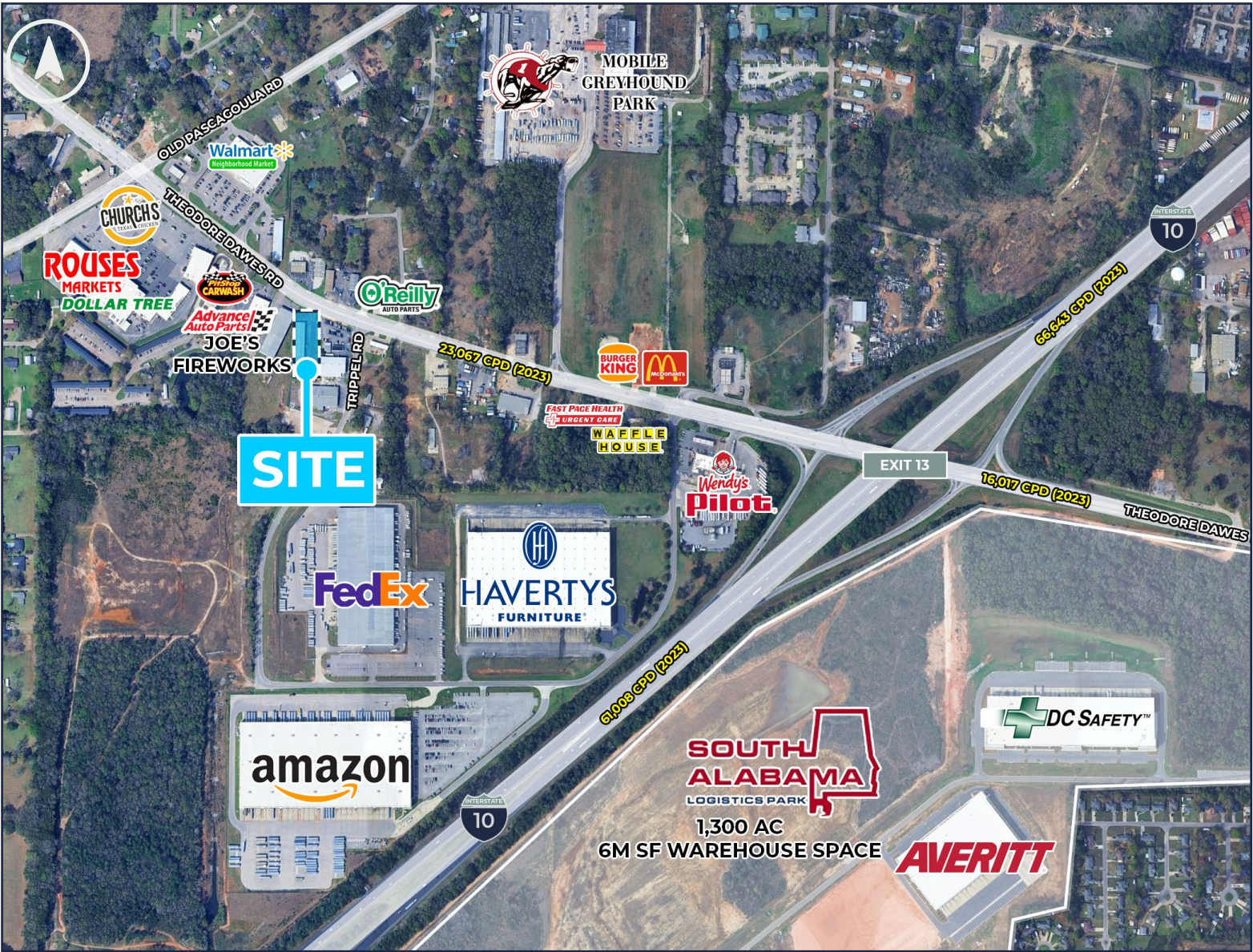
David Dexter

251.379.9446

ddexter@cre-mobile.com



**CRE
MOBILE**
CRE-MOBILE.COM

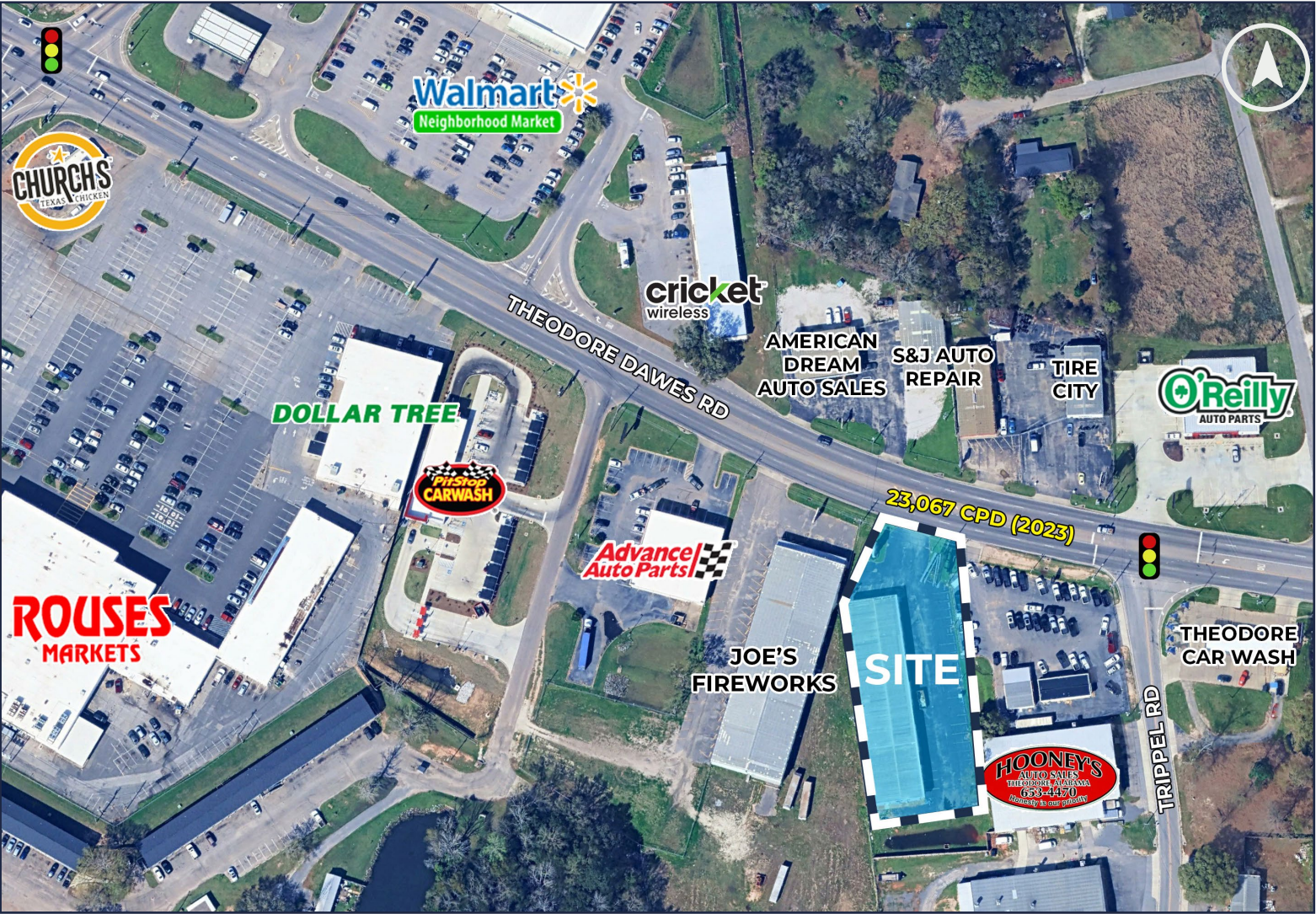


DISTANCES TO NOTABLE LOCATIONS

I-10	0.5± miles
Highway 90 (Exit 15)	3± miles
Rangeline Rd	4.5± miles
I-65	7.5± miles
Mississippi State Line	14± miles

Driving distance

NO WARRANTY OR REPRESENTATION, EXPRESS OR IMPLIED, IS MADE AS TO THE ACCURACY OF THE INFORMATION CONTAINED HEREIN, AND THE SAME IS SUBMITTED SUBJECT TO ERRORS, OMISSIONS, CHANGE OF PRICE, RENTAL OR OTHER CONDITIONS, PRIOR SALE, LEASE OR FINANCING, OR WITHDRAWAL WITHOUT NOTICE, AND OF ANY SPECIAL LISTING CONDITIONS IMPOSED BY OUR PRINCIPALS. NO WARRANTIES OR REPRESENTATIONS ARE MADE AS TO THE CONDITION OF THE PROPERTY NOR ANY HAZARDS CONTAINED THEREIN ARE ANY TO BE IMPLIED.



NO WARRANTY OR REPRESENTATION, EXPRESS OR IMPLIED, IS MADE AS TO THE ACCURACY OF THE INFORMATION CONTAINED HEREIN, AND THE SAME IS SUBMITTED SUBJECT TO ERRORS, OMISSIONS, CHANGE OF PRICE, RENTAL OR OTHER CONDITIONS, PRIOR SALE, LEASE OR FINANCING, OR WITHDRAWAL WITHOUT NOTICE, AND OF ANY SPECIAL LISTING CONDITIONS IMPOSED BY OUR PRINCIPALS. NO WARRANTIES OR REPRESENTATIONS ARE MADE AS TO THE CONDITION OF THE PROPERTY NOR ANY HAZARDS CONTAINED THEREIN ARE ANY TO BE IMPLIED.