

**5260 WESTGATE DR.  
SUITE C**  
SOUTH FULTON, GA 30336

**For Lease**  
**21,754± SF**  
**Office / Warehouse Space**

**WILSON COVINGTON, SIOR**

*Senior Vice President*

404.942.2073

wcovington@kingindustrial.com

**RANDALL BRYAN, SIOR**

*Senior Vice President*

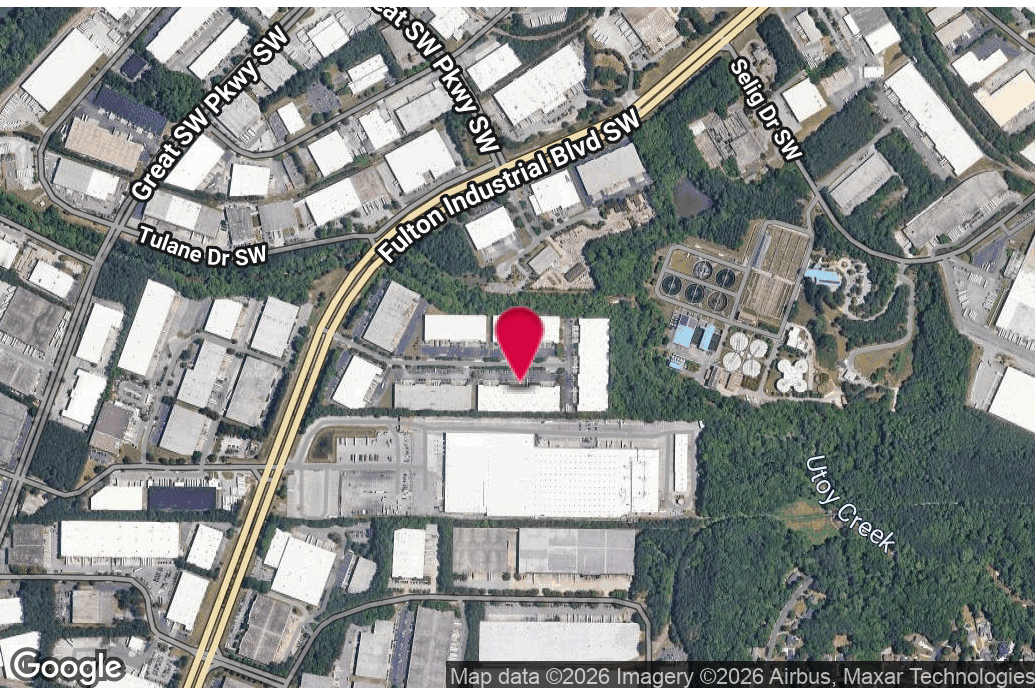
404.942.2015

rbryan@kingindustrial.com

**King** *Industrial  
Realty, Inc.*

Industrial • Commercial • Investment  
404.942.2000 | [kingindustrial.com](http://kingindustrial.com)

FOR LEASE  
21,754± SF  
OFFICE / WAREHOUSE  
SPACE



## PROPERTY HIGHLIGHTS

- **Suite C:** 21,754± SF with 1,705± SF Office
- T-5 Warehouse Lights
- 33'5 x 40'0 Column Spacing
- 3 Dock High Doors
- 1 Drive-In Door
- 100' Truck Court
- 22' ± Clear Height
- Zoning HI

## BUILDING SUMMARY

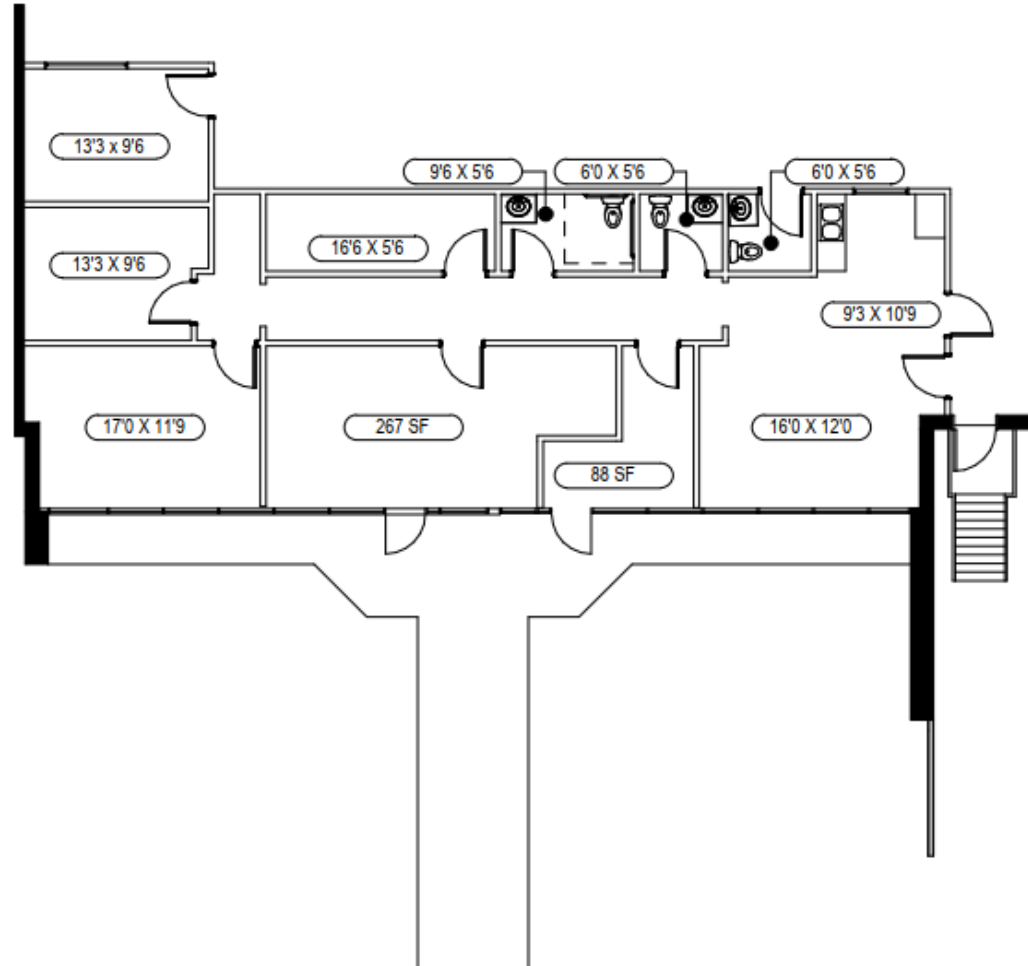
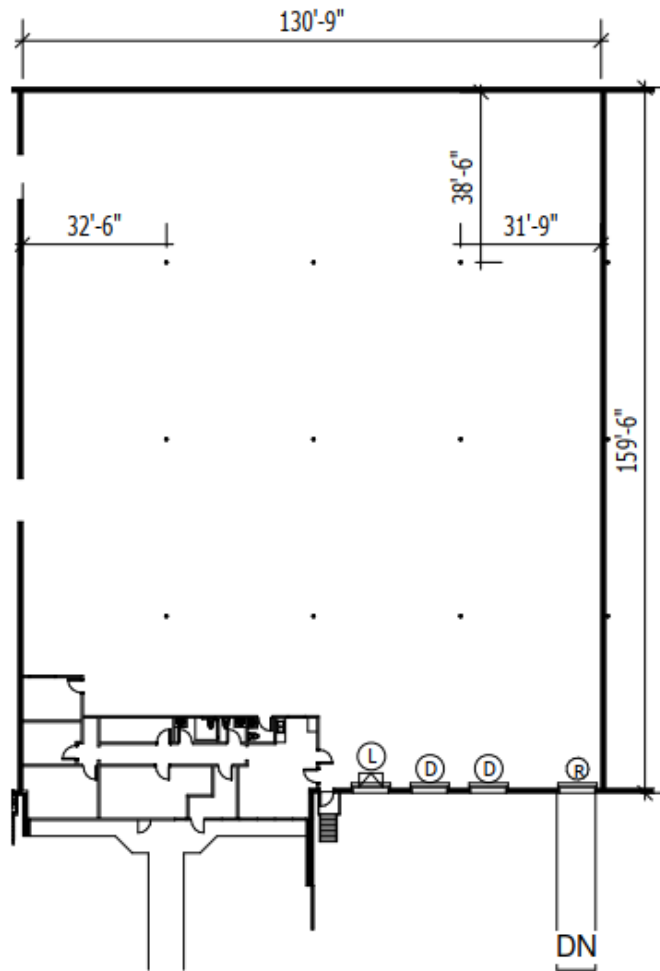
Lot Size:	3.98 Acres
Building Size:	87,448 SF

**King** Industrial Realty, Inc. **CORFAC** INTERNATIONAL  
Industrial • Commercial • Investment  
404.942.2000 | kingindustrial.com

**WILSON COVINGTON, SIOR**  
Senior Vice President  
404.942.2073  
wcovington@kingindustrial.com

**RANDALL BRYAN, SIOR**  
Senior Vice President  
404.942.2015  
rbryan@kingindustrial.com

# SUITE C FLOOR PLAN

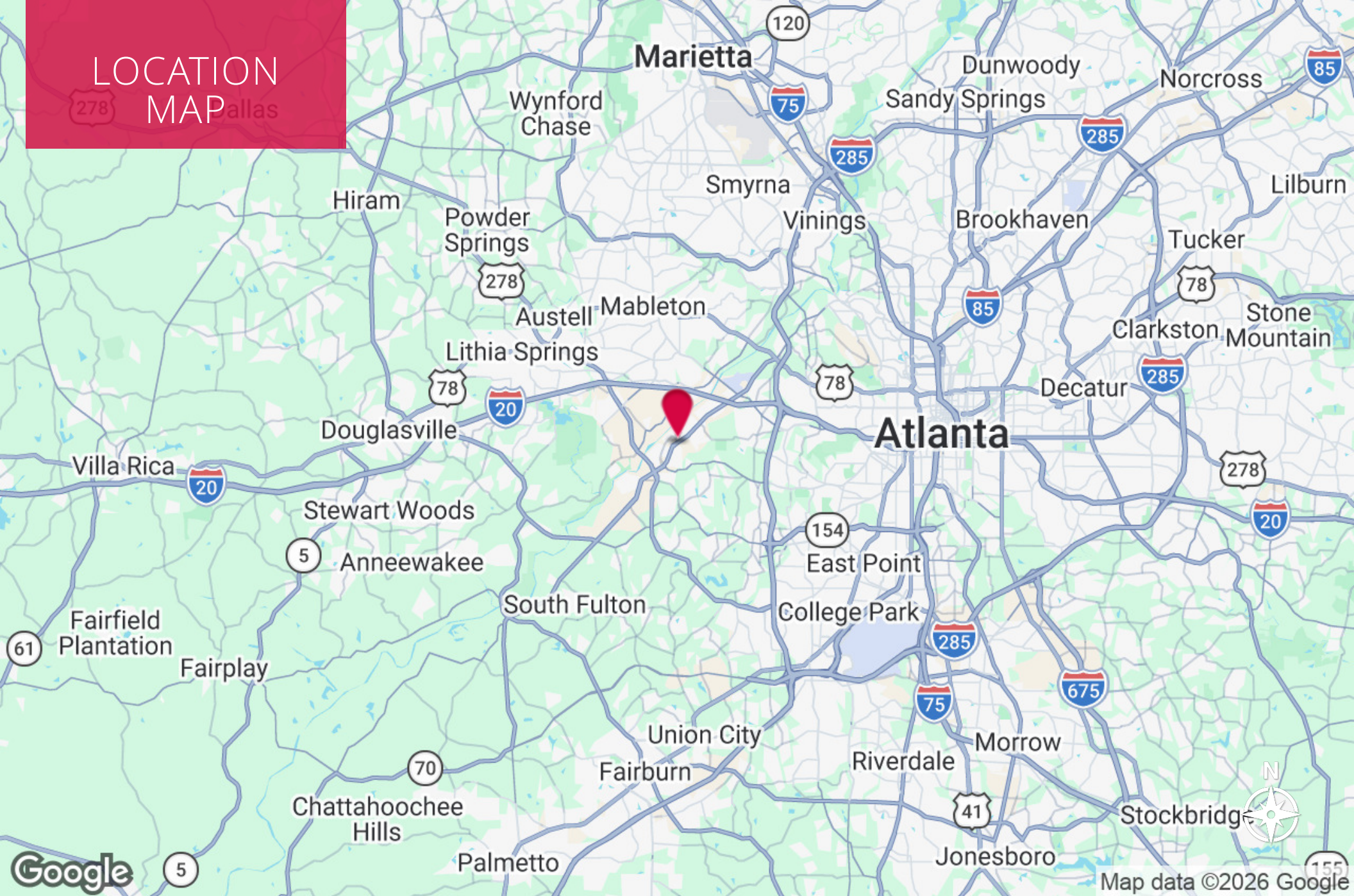


ADDITIONAL  
PHOTO



# LOCATION MAP

278 Pallas



**WILSON COVINGTON, SIOR**

Senior Vice President

404.942.2073

wcovington@kingindustrial.com

**RANDALL BRYAN, SIOR**

Senior Vice President

404.942.2015

rbryan@kingindustrial.com

**king** Industrial Realty, Inc. **CORFAC** INTERNATIONAL

Industrial • Commercial • Investment  
404.942.2000 | kingindustrial.com

EXCLUSIVELY LISTED BY:

**WILSON COVINGTON, SIOR**

*Senior Vice President*  
wcovington@kingindustrial.com  
404.942.2073

**RANDALL BRYAN, SIOR**

*Senior Vice President*  
rbryan@kingindustrial.com  
404.942.2015

***King*** Industrial  
Realty, Inc.

Industrial • Commercial • Investment  
404.942.2000 | kingindustrial.com