

**PRICE
INCLUDES
JANITORIAL!**

FOR LEASE • LAKE PARK PLAZA

5575 LAKE PARK WAY • LA MESA CA 91942

862 - 1,775 SF PROFESSIONAL OFFICE SUITES



858.360.3000 | caacre.com

MATT MONTERROSO
Senior Vice President
matt@caacre.com
DRE Lic # 02073919

MIKE CONGER
Principal
Mike@caacre.com
DRE Lic # 01381193

FOR LEASE • LAKE PARK PLAZA

5575 LAKE PARK WAY • LA MESA CA 91942



New Common Outdoor Meeting and Event Area, New Digital Directories, New Landscaping, Automated Access Control, Remodeled Bathrooms, Walkways, and Common Areas, Brand New Paint.



- 862 - 1,775 SF Professional Office Suite
- Professional Image with Outdoor Courtyard Amenity
- Ample Parking
- Cable & T1 Internet Service Available
- Operable Windows and Private HVAC Units Increase Clean Air
- Walking Distance to Many Restaurants, Amenities and Child Care
- Seconds to/from I-8, Hwy 125 Freeways
- Lease Rate: \$2.39 /SF - Gross + Electric



858. 360. 3000 | caacre.com

MATT MONTERROSO
Senior Vice President
matt@caacre.com
DRE Lic # 02073919

MIKE CONGER
Principal
Mike@caacre.com
DRE Lic # 01381193

FOR LEASE • LAKE PARK PLAZA

5575 LAKE PARK WAY • LA MESA CA 91942



858. 360. 3000 | caacre.com

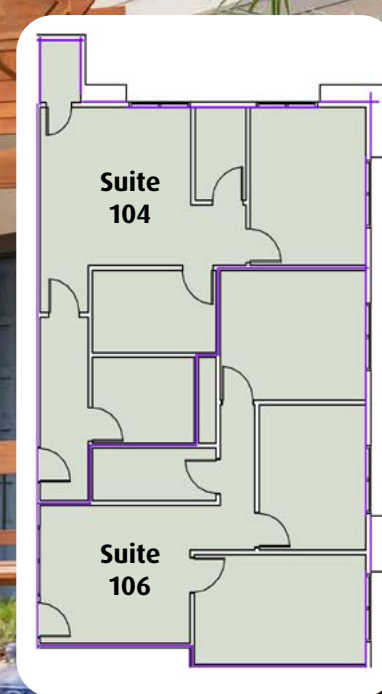
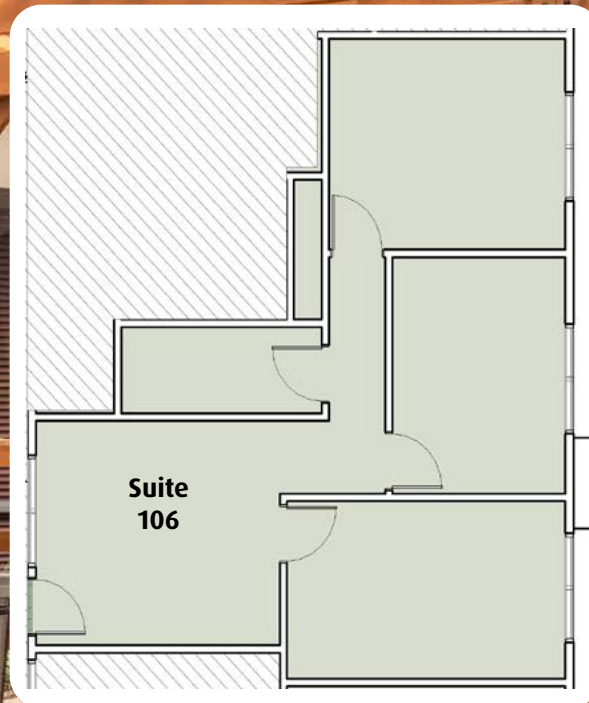
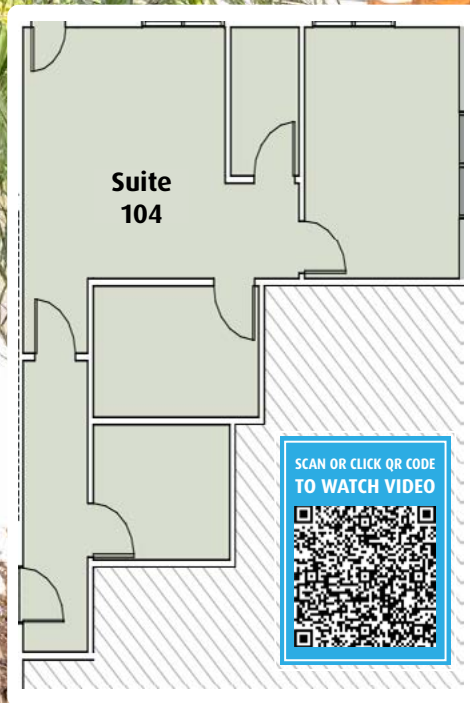
MATT MONTERROSO
Senior Vice President
matt@caacre.com
DRE Lic # 02073919

MIKE CONGER
Principal
Mike@caacre.com
DRE Lic # 01381193

SUITE	SF	DESCRIPTION
104	862	• Available 6/1/2025 • \$2,400/Month MG + Utilities
106	913	• Available 1/1/2026 • \$2,500/Month MG + Utilities
Combine Suites 104-106 for 1,775		

FOR LEASE • LAKE PARK PLAZA

5575 LAKE PARK WAY • LA MESA CA 91942



858. 360. 3000 | caacre.com

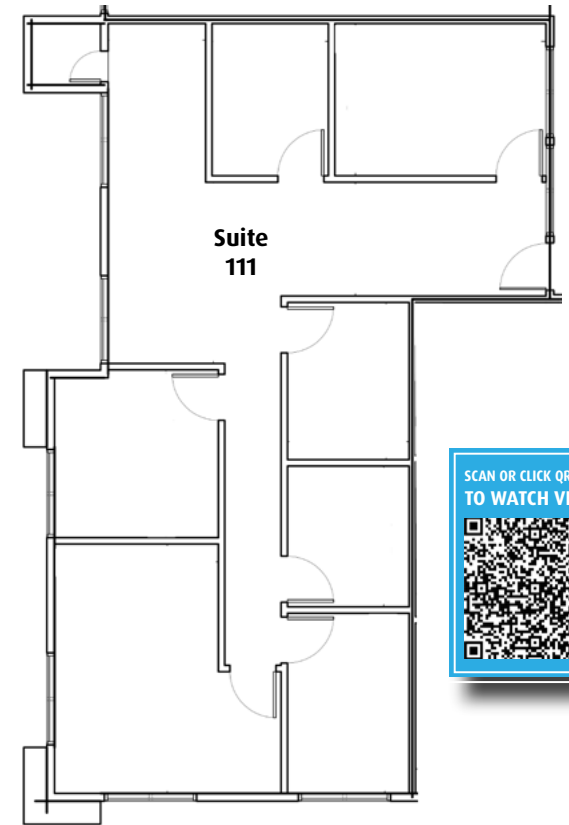
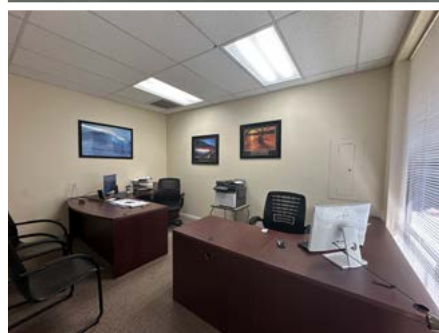
MATT MONTERROSO
Senior Vice President
matt@caacre.com
DRE Lic # 02073919

MIKE CONGER
Principal
Mike@caacre.com
DRE Lic # 01381193

FOR LEASE • LAKE PARK PLAZA

5575 LAKE PARK WAY • LA MESA CA 91942

SUITE	SF	DESCRIPTION
111	1,407	<ul style="list-style-type: none">• Kitchenette• Available July 2025• \$3,448/Month MG + Utilities



SCAN OR CLICK QR CODE
TO WATCH VIDEO



858.360.3000 | caacre.com

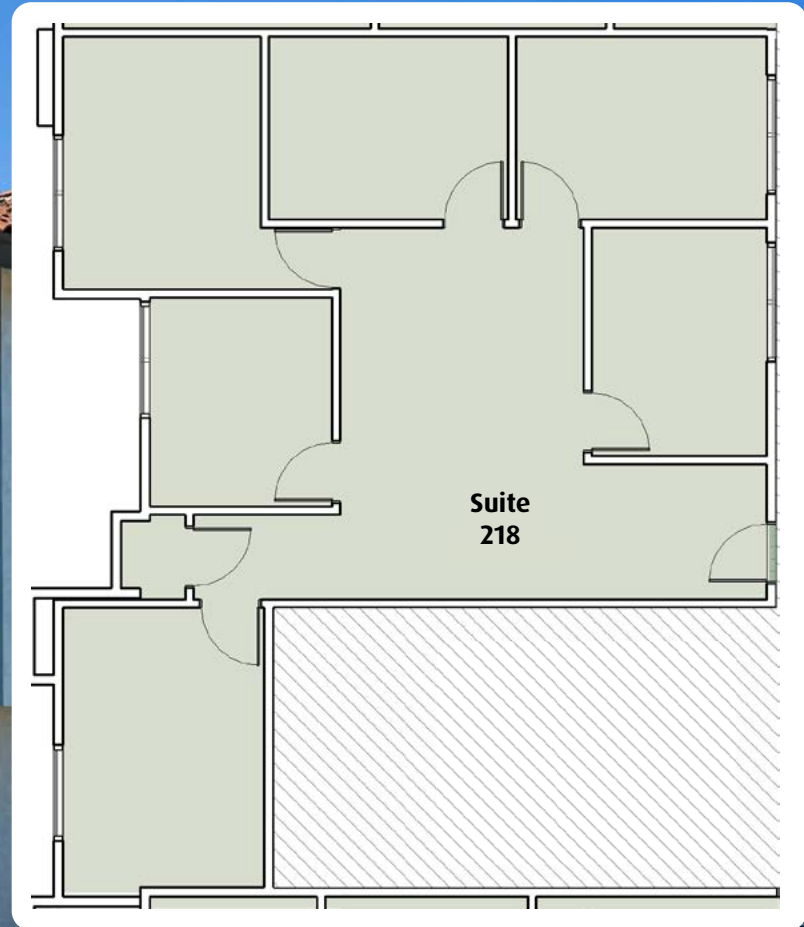
MATT MONTERROSO
Senior Vice President
matt@caacre.com
DRE Lic # 02073919

MIKE CONGER
Principal
Mike@caacre.com
DRE Lic # 01381193

FOR LEASE • LAKE PARK PLAZA

5575 LAKE PARK WAY • LA MESA CA 91942

SUITE	SF	DESCRIPTION
218	1,302	<ul style="list-style-type: none">• 6 Private Offices• Kitchenette & Reception• Available October 1, 2025• \$3,255/Month MG + Utilities



858. 360. 3000 | caacre.com

MATT MONTERROSO
Senior Vice President
matt@caacre.com
DRE Lic # 02073919

MIKE CONGER
Principal
Mike@caacre.com
DRE Lic # 01381193

FOR LEASE • LAKE PARK PLAZA

5575 LAKE PARK WAY • LA MESA CA 91942



The city of La Mesa is located 9 miles east of Downtown San Diego, in San Diego County. The population was 57,065 at the 2010 census, up from 54,749 at the 2000 census.

Centrally located in the rolling hills of San Diego County, La Mesa is known as the Jewel of the Hills. A near perfect climate, tree-lined streets, walkable neighborhoods, easy access to retail and commercial areas, and a quaint downtown village making La Mesa a highly desirable community in which to live and work.

The La Mesa community boast a variety of unique dining and breweries, boutiques, antique shops, farmers markets, historical landmarks, recreational parks and hiking trails galore! There is more to Jewel of the Hills than just geography. It's about the myriad of people who have called La Mesa home for the last 100 years.

La Mesa as a small, picturesque city with lots of character. You are invited to experience the wealth of treasures that make up La Mesa... the Jewel of the Hills.



858. 360. 3000 | caacre.com

MATT MONTERROSO
Senior Vice President
matt@caacre.com
DRE Lic # 02073919

MIKE CONGER
Principal
Mike@caacre.com
DRE Lic # 01381193