

OFFICE | FOR SALE

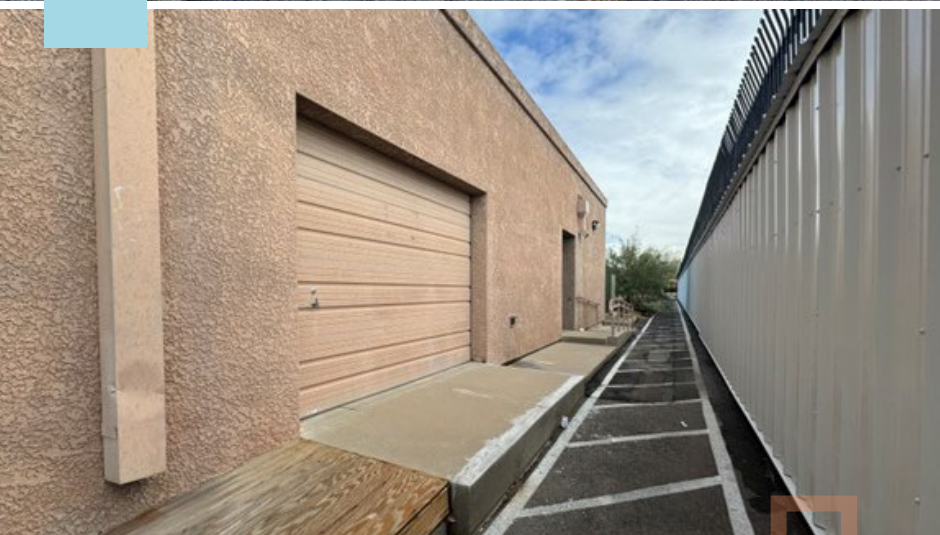


6450 E Broadway Blvd

**Located in the Park Place Mall
Trade Area**

CBRE

TUCSON, AZ 85710



THE OPPORTUNITY

- + Located just south of Broadway Blvd
- + Single-Story office building with at door parking
- + Less than a mile south of Carondelet St. Joseph's Hospital
- + Minutes from the Park Place Mall and surrounding trade area offers excellent retail and restaurant amenities

PROPERTY HIGHLIGHTS

\$500,000

Asking Price



±3,926 SF

Building Size



±6,000 SF

Lot Size



1994

Year Built



C-1,

Zoning, Tucson



East Central

Submarket



4.85/1,000

Parking Ratio



134-23-4200

Tax Parcel No.



**LOCATED IN EAST CENTRAL
SUBMARKET**

6450 E BROADWAY BLVD | TUCSON, AZ 85710

6450

E Broadway Blvd

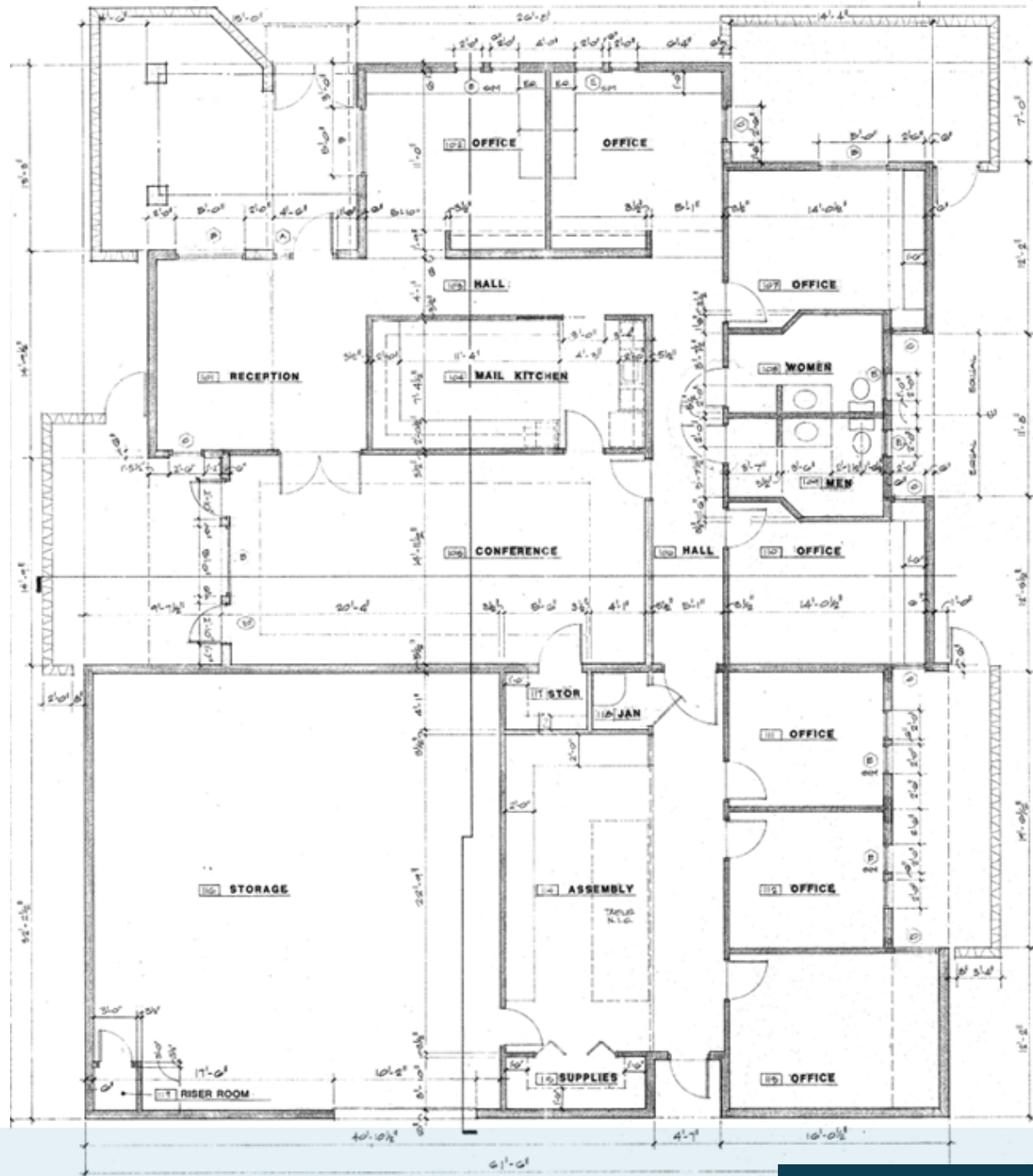
FOR SALE

BLDG SIZE

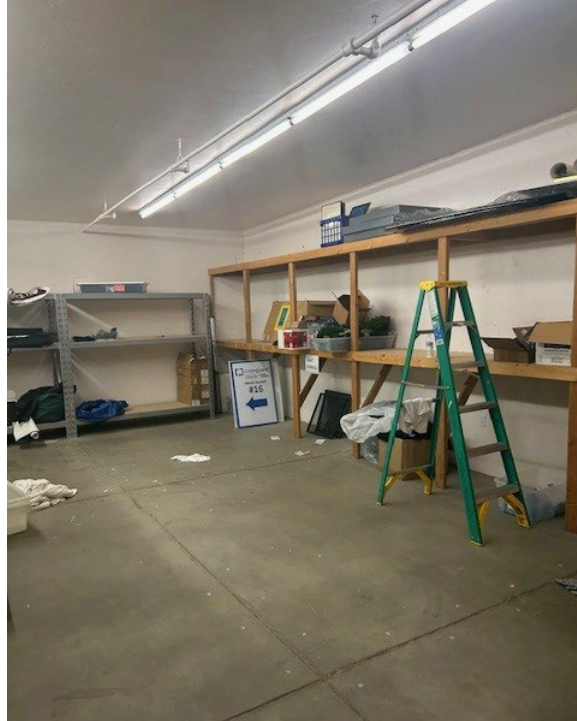
± 3,926 SF



Not to scale



site plan



INTERIOR PHOTOS



A E R I A L



6450
E Broadway Blvd

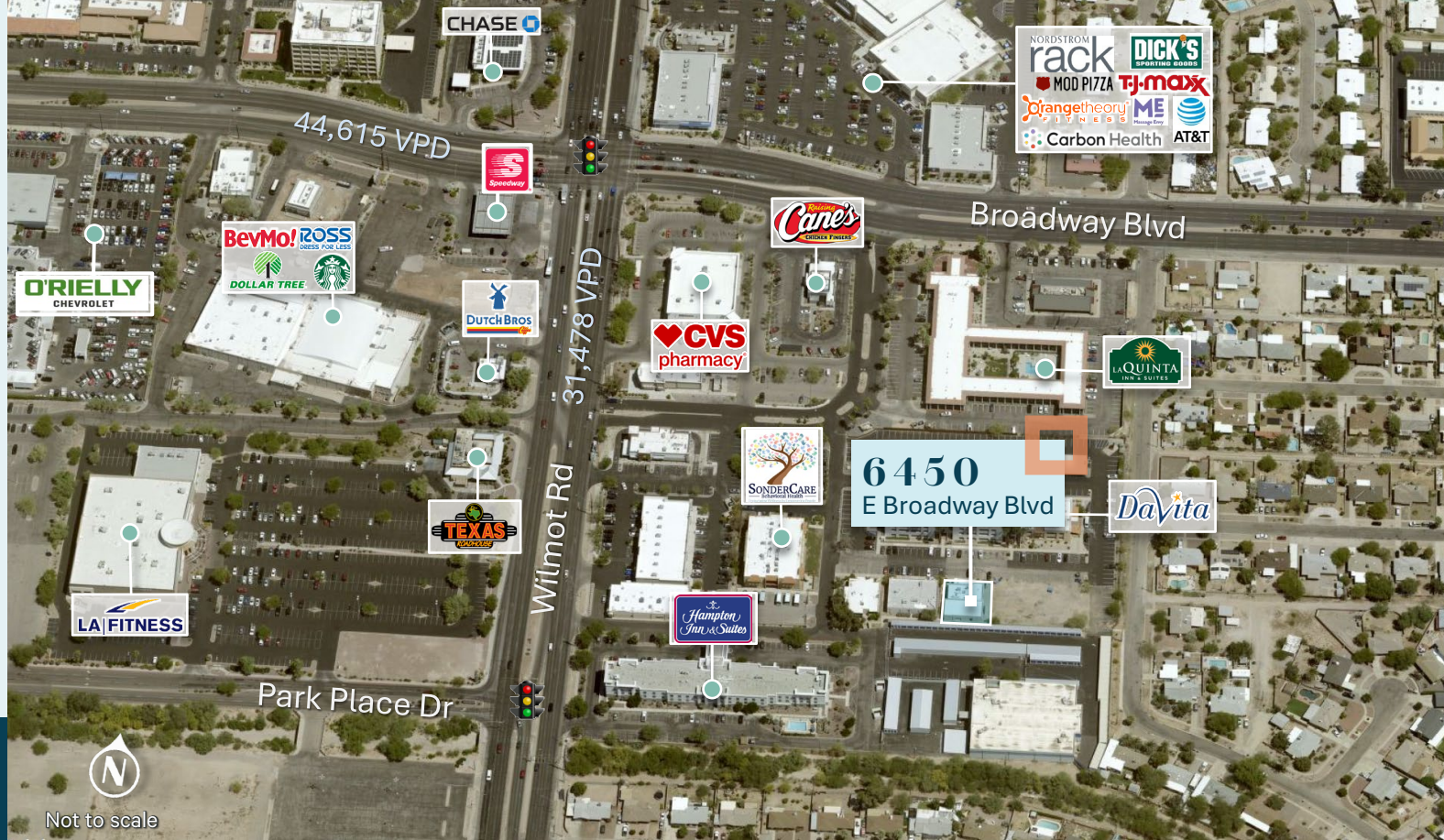


Not to scale

6450

E Broadway Blvd

FOR SALE



C O N T A C T S

DAVID MONTIJO
First Vice President
+1 520 323 5136
david.montijo@cbre.com

© 2026 CBRE, Inc. All rights reserved. This information has been obtained from sources believed reliable but has not been verified for accuracy or completeness. You should conduct a careful, independent investigation of the property and verify all information. Any reliance on this information is solely at your own risk. CBRE and the CBRE logo are service marks of CBRE, Inc. All other marks displayed on this document are the property of their respective owners, and the use of such logos does not imply any affiliation with or endorsement of CBRE. Photos herein are the property of their respective owners. Use of these images without the express written consent of the owner is prohibited.

CBRE