



68

ABELL STREET

RETAIL FOR SALE



CORY ROSEN
SENIOR VICE PRESIDENT
SALES REPRESENTATIVE
C: 416-523-7749
E: CROSEN@CUBECOM.CA

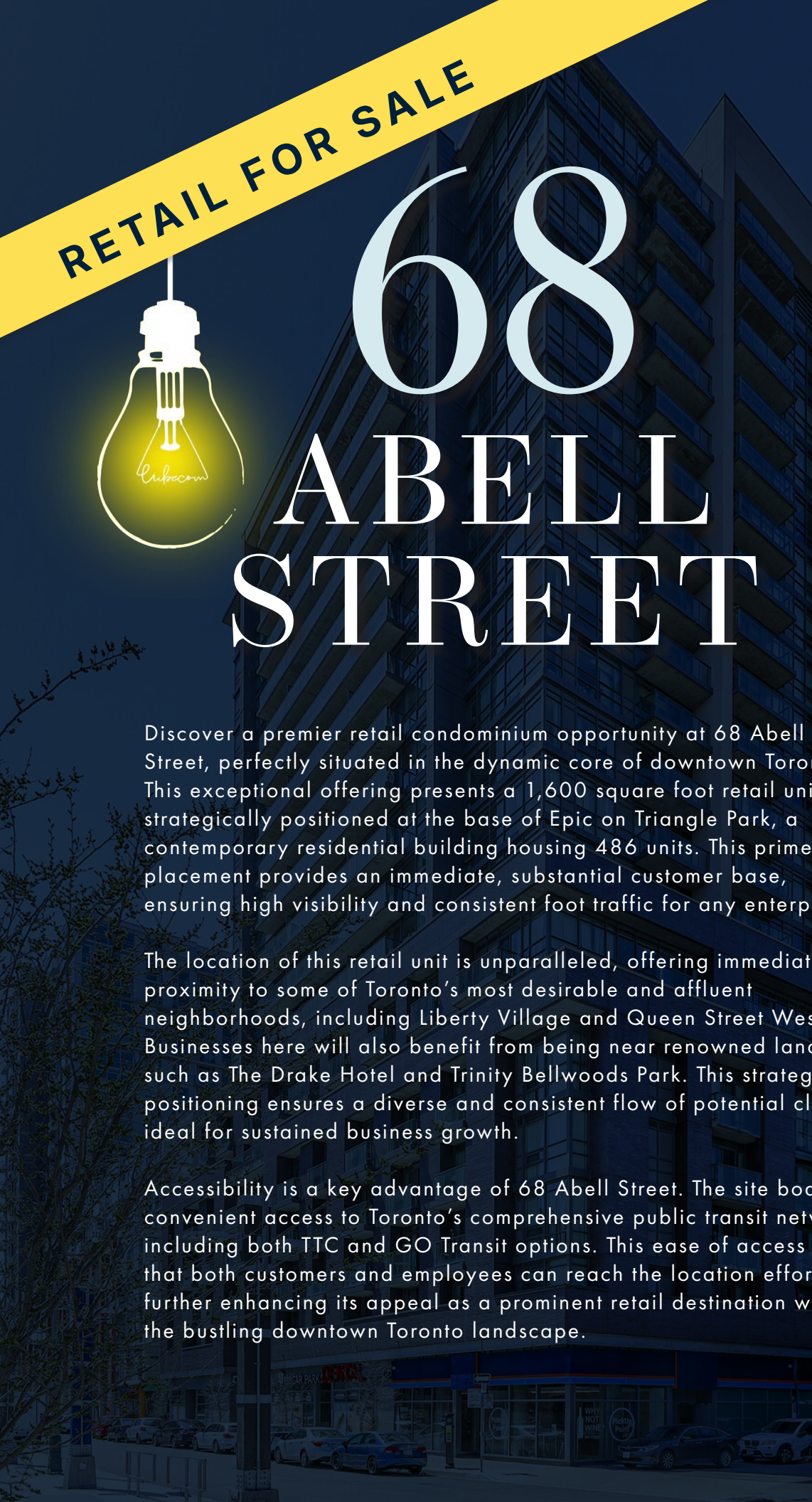
COOPER BLUME
SALES REPRESENTATIVE
C: 416-566-8217
E: CBLUME@CUBECOM.CA



CUBECOM
FULL SERVICE REALTY

Cubecom Commercial Realty Inc. Brokerage | www.cubecom.ca

Copyright © 2025 Cubecom Commercial Realty Inc. All rights reserved. This brochure is the intellectual property of Cubecom. Reproduction, including all text, photographs, and designs, as well as distribution or any unauthorized use, is strictly prohibited.



RETAIL FOR SALE

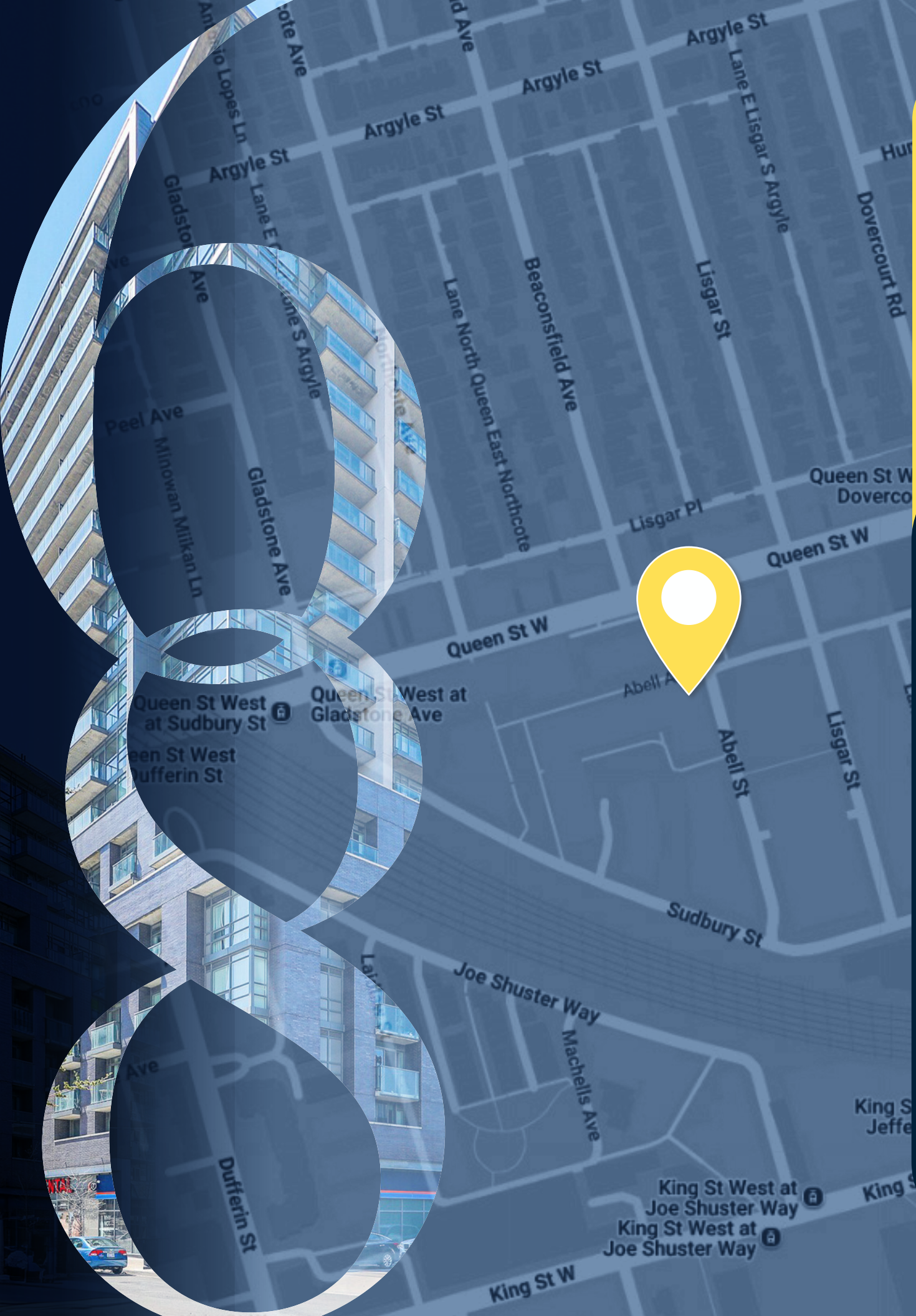


68 ABELL STREET

Discover a premier retail condominium opportunity at 68 Abell Street, perfectly situated in the dynamic core of downtown Toronto. This exceptional offering presents a 1,600 square foot retail unit, strategically positioned at the base of Epic on Triangle Park, a contemporary residential building housing 486 units. This prime placement provides an immediate, substantial customer base, ensuring high visibility and consistent foot traffic for any enterprise.

The location of this retail unit is unparalleled, offering immediate proximity to some of Toronto's most desirable and affluent neighborhoods, including Liberty Village and Queen Street West. Businesses here will also benefit from being near renowned landmarks such as The Drake Hotel and Trinity Bellwoods Park. This strategic positioning ensures a diverse and consistent flow of potential clientele, ideal for sustained business growth.






Accessibility is a key advantage of 68 Abell Street. The site boasts convenient access to Toronto's comprehensive public transit network, including both TTC and GO Transit options. This ease of access ensures that both customers and employees can reach the location effortlessly, further enhancing its appeal as a prominent retail destination within the bustling downtown Toronto landscape.



UNIT DETAILS

-  **UNIT #:**
13 LEVEL 1
-  **SQFT:**
1,600 (APPROX)
-  **PRICE:**
~~\$1,840,000~~
\$1,600,000

DEMOGRAPHIC

-  **POPULATION**
0 - 3 KM - 253,776
0 - 5 KM - 597,484
0 - 10 KM - 1,354,982
-  **AVG. HOUSEHOLD INCOME**
0 - 3 KM - \$103,964
0 - 5 KM - \$114,873
0 - 10 KM - \$130,768
-  **MEDIAN AGE**
0 - 3 KM - 36.8
0 - 5 KM - 37.7
0 - 10 KM - 38.9
-  **DAYTIME POPULATION**
0 - 3 KM - 256,118
0 - 5 KM - 1,050,769
0 - 10 KM - 1,740,233
-  **HOUSEHOLDS**
0 - 3 KM - 129,953
0 - 5 KM - 313,480
0 - 10 KM - 638,789

SOURCE: COSTAR, 2023



FLOORPLAN

1,600 SF



CUBECOM
FULL SERVICE REALTY

Cubecom Commercial Realty Inc. Brokerage | www.cubecom.ca
Copyright © 2025 Cubecom Commercial Realty Inc. All rights reserved. This brochure is the intellectual property of Cubecom. Reproduction, including all text, photographs, and designs, as well as distribution or any unauthorized use, is strictly prohibited.

A map of the Liberty Village area in Toronto, showing streets like Queen St W, King St W, and Dundas St W. The map is overlaid with numerous business logos and names, including 'the workshop', 'Chen Chen's', 'Gladstone House', 'Flotette', 'Drake Hotel', 'Good Son', 'Aleria', 'Prequel', 'Coco Cafe', 'Mother', 'Fresh', 'Smoque N' Bones', 'Rexall', 'Bar Poet', 'Shoppers Drug Mart', 'Sammie's', 'Matt's BurgerLab', 'float', 'MINT', 'Camp', 'Kintan Ramen', 'Liberty Village Toronto', and 'Kintan Ramen'. A blue line connects a circular inset image of a modern building to the map. The map is credited to Google My Maps.

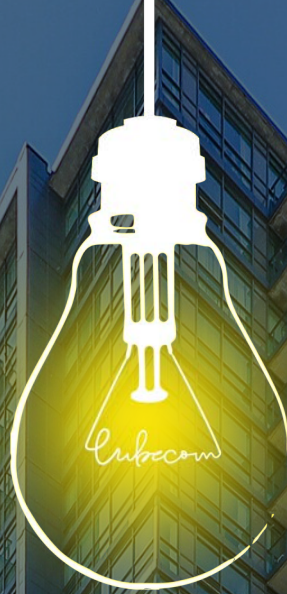


Copyright © 2025 Cubecom Commercial Realty Inc. All rights reserved. This brochure is the intellectual property of Cubecom. Reproduction, including all text, photographs, and designs, as well as distribution or any unauthorized use, is strictly prohibited.



UNDER CONSTRUCTION

EXISTING CONDOS



Contact us:

CORY ROSEN
SENIOR VICE PRESIDENT
SALES REPRESENTATIVE
C: 416-523-7749
E: CROSEN@CUBECOM.CA

COOPER BLUME
SALES REPRESENTATIVE
C: 416-566-8217
E: CBLUME@CUBECOM.CA



CUBECOM
FULL SERVICE REALTY

Cubecom Commercial Realty Inc. Brokerage | www.cubecom.ca

All information provided is deemed reliable but is not guaranteed and should be independently verified. Property availability, specifications, and pricing are subject to change without notice. Not intended to solicit buyers or sellers currently under contract with another brokerage. Cubecom Commercial Realty Inc., Brokerage is registered in Ontario and operates in compliance with RECO and the Real Estate and Business Brokers Act (REBBA).