

RE/MAX PLATINUM

2.8 Acres Highway 31
S Hartselle, AL, 35640

LAND

0 BATHROOM

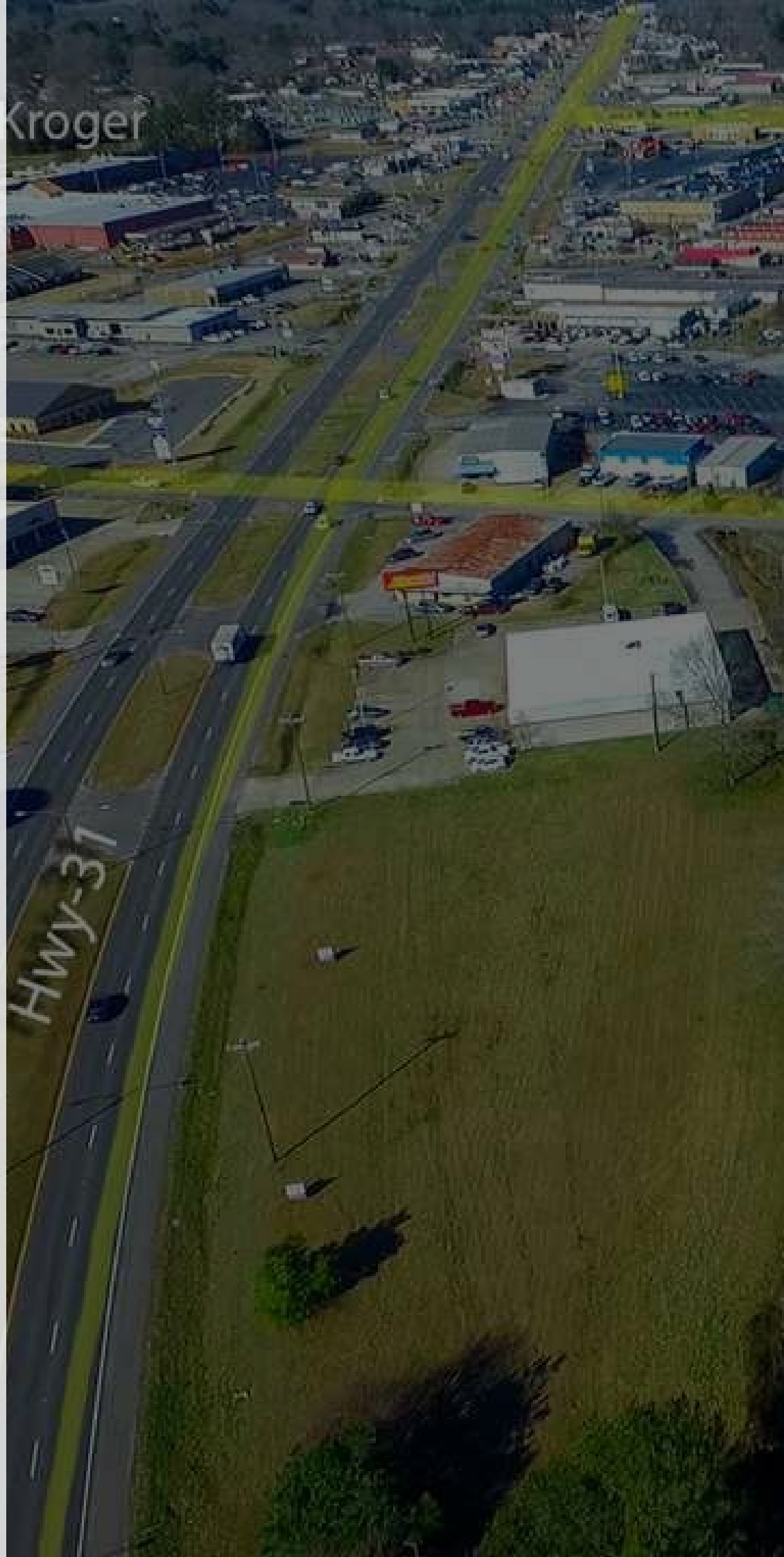
0 BEDROOM

2.8 ACRES

MLS # 1107951

PRICE:

\$650,000

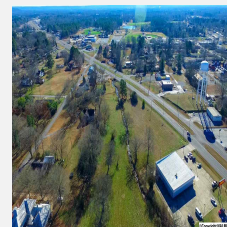
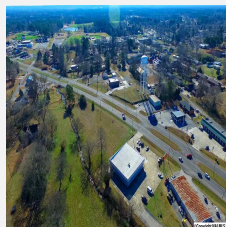
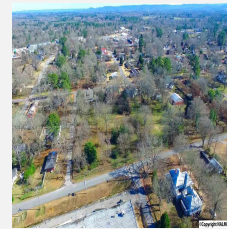


2.8 ACRES HIGHWAY 31 S HARTSELLE, AL, 35640

EXCELLENT RETAIL OPPORTUNITY WITH +/- 365' OF HWY 31 S Hartselle Frontage. LOCATED +/- .5 Mile from HWY 31 & HWY 36 (Main Street) INTERSECTION. PROPERTY IS LEVEL TO SLOPING. OWNER WILL CONSIDER SUBDIVIDING.

16 Photographs

PHOTO GALLERY



SCHOOLS

1 HARTSELLE JUNIOR HIGH

Hartselle - 0.33 miles

2 HARTSELLE HIGH

Hartselle - 0.33 miles

3 CRESTLINE ELEMENTARY

Hartselle - 0.57 miles

4 BURLESON ELEMENTARY

Hartselle - 0.86 miles

5 BARKLEY BRIDGE ELEMENTARY

Hartselle - 1.33 miles

Agent

TERRY TAYLOR



Let's Make Your Deal A Great Experience



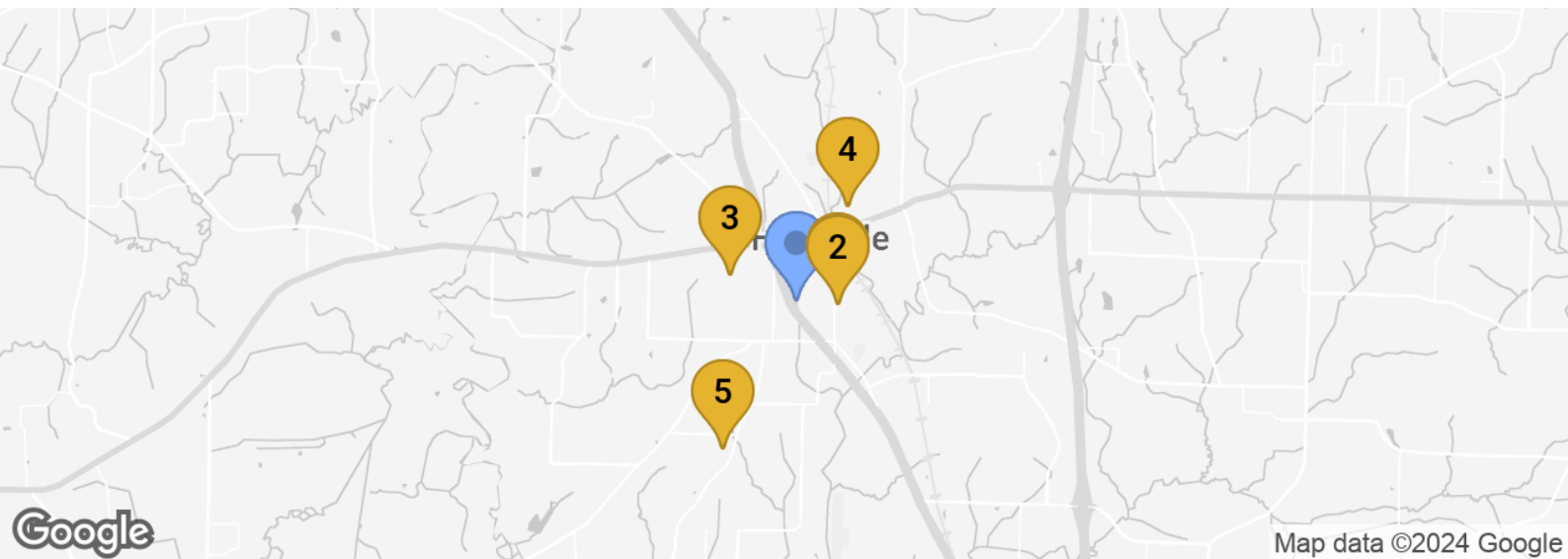
256-227-4465



terrytaylor@remax.net



<https://terrytaylor.remax-platinum-al.com/mls/1107951>



<https://terrytaylor.remax-platinum-al.com/mls/1107951>

The data relating to real estate on this Web site derive in part from the ValleyMLS.com IDX datashare program. Listings marked with the NALMLS logo are provided courtesy of the ValleyMLS.com IDX Database. ©copy 2024 ValleyMLS.com. All information provided is deemed reliable but is not guaranteed and should be independently verified.