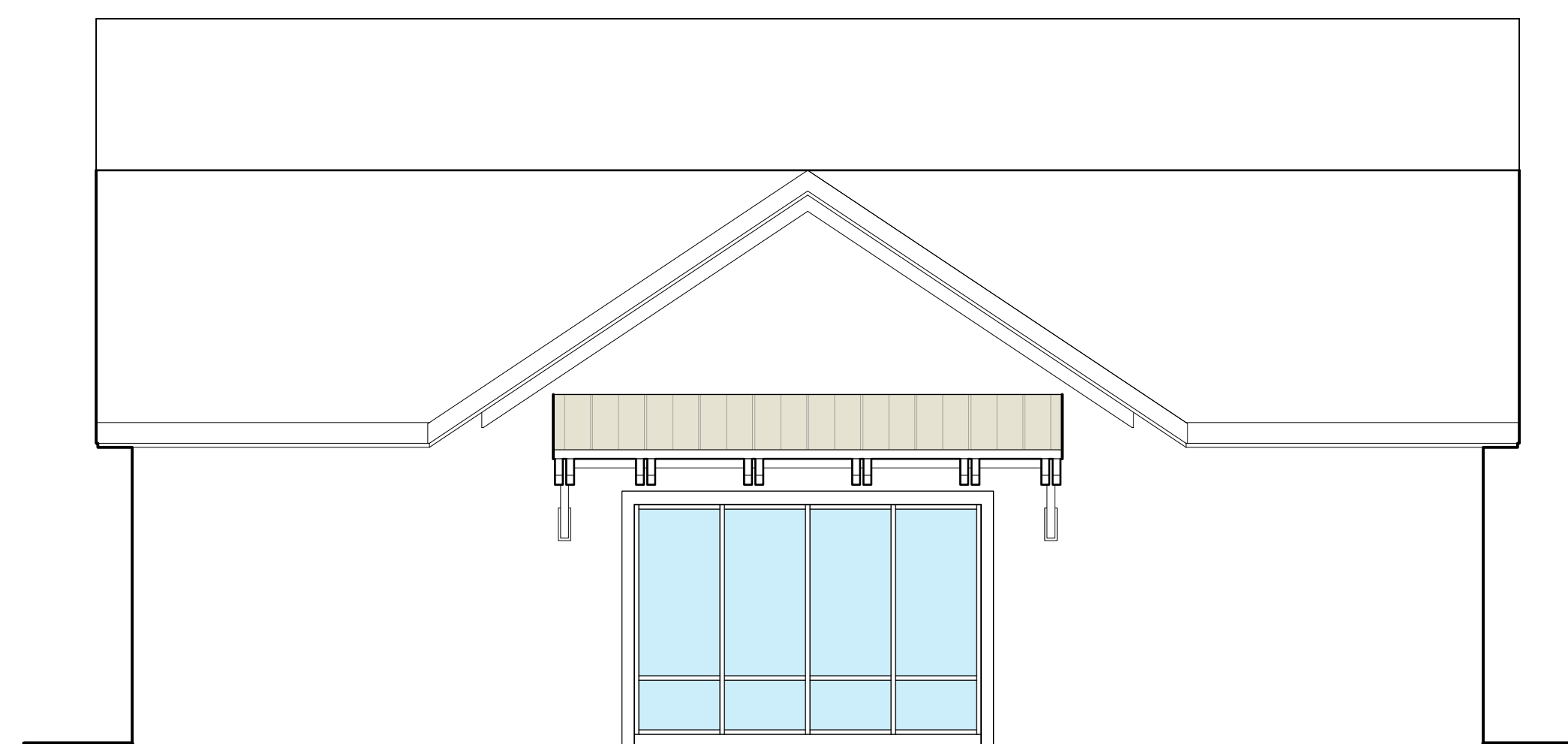


ELEVATIONS
A2.08 1/4"



ELEVATIONS
A2.08 1/4"



ELEVATIONS
A2.08 1/4"



COTHAN
HARRIS
ARCHITECTURE
5725 OLEANDER DRIVE, STE. E-1
WILMINGTON, DE 19804
910.793.3433

SCOTTS HILL COMMERCIAL
NEW CONSTRUCTION

HIGHWAY 17
PENDER COUNTY

ELEVATIONS

SCHEMATIC DRAWINGS
18-DEC-23

A2.0

© 2023 CHA A11 (RCH) 118 12 (REV 1)