

FOR SUBLEASE

MAXWELL BATES BUILDING

2207 4 STREET SW, CALGARY



PREMIER FULL FLOOR OFFICE SPACE IN MISSION

Alexi Olcheski
President & CEO
403 971 5167
alexi.olcheski@kpliglobal.com

Estelle Tran
Managing Director
403 993 2898
estelle.tran@kpliglobal.com

Anastasiya Gryshchenko
Vice President
403 888 1748
anastasiya.gry@kpliglobal.com

KPLI
GLOBAL

PROPERTY DETAILS

Availability

Suite 400: 6,511 sf

Expiry

Jan 30, 2034

Operating Costs

\$20.16 psf (Est 2026)

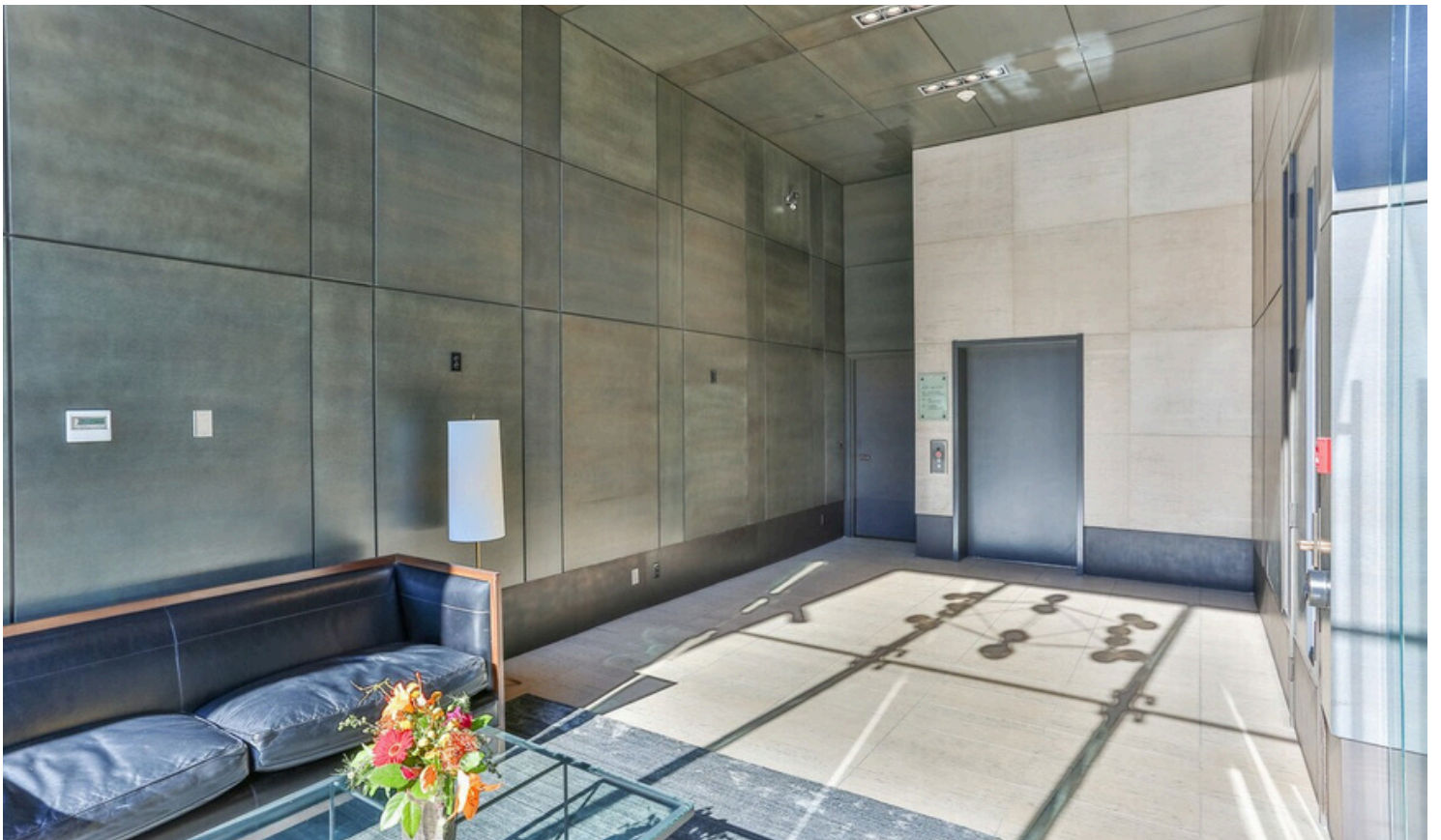
Parking Ratio

1:685 sf

- Prime location in the vibrant Mission community Surrounded by abundant retailers, restaurants, and services
- High-traffic exposure with approximately 15,000 vehicles passing daily
- Located within a first-class mixed-use development



BUILDING LOBBY



FLOORPLAN

Suite 400
6,511 SF



RECEPTION



7 OFFICES



BOARDROOM



SERVER ROOM



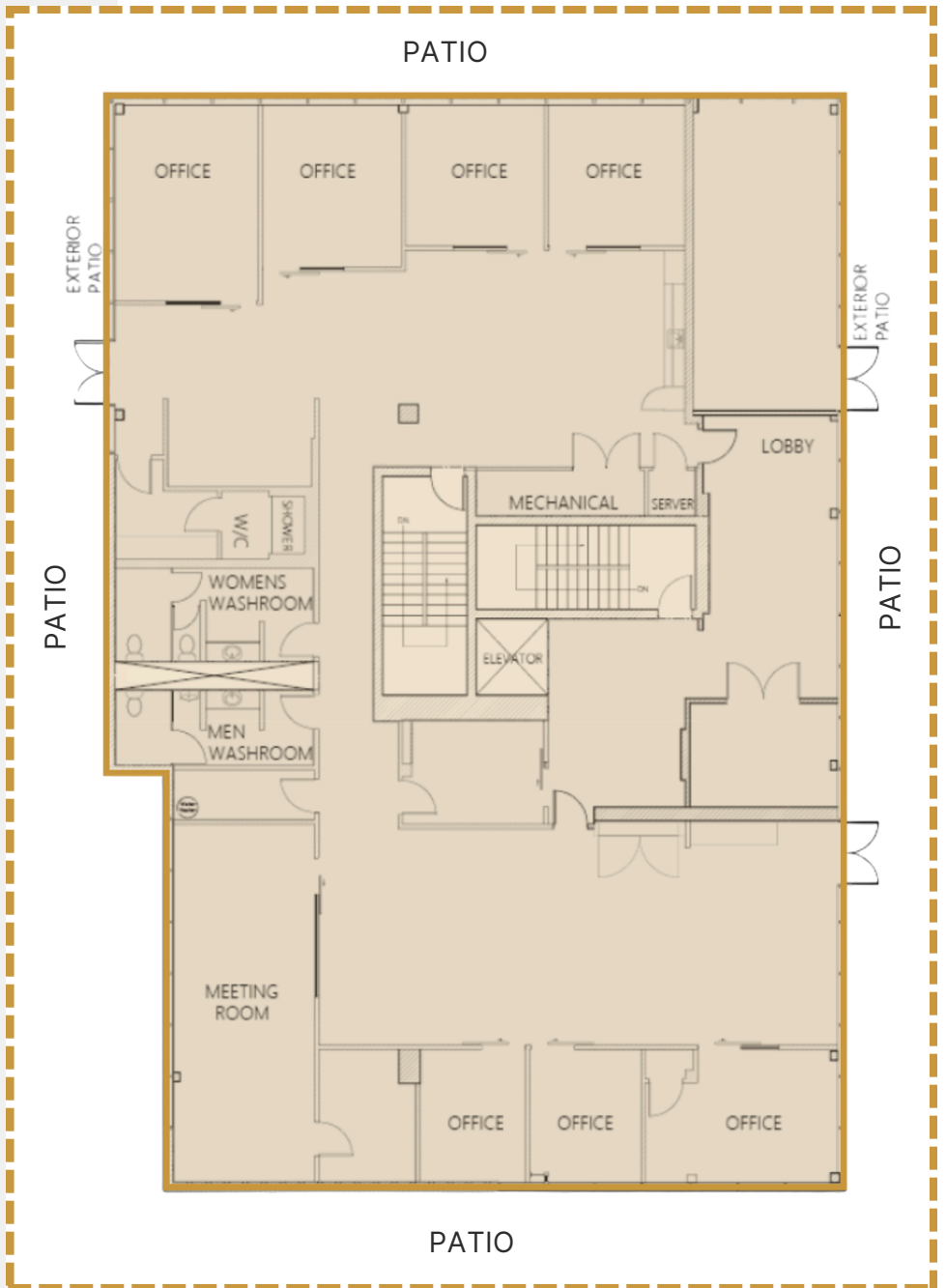
OPEN AREA



WASHROOMS



PATIO



UNIT INTERIOR





CONTACT US FOR MORE INFORMATION



Alexi Olcheski

President & CEO

403 971 5167

alexi.olcheski@kpliglobal.com



Estelle Tran

Managing Director

403 993 2898

estelle.tran@kpliglobal.com



Anastasiya Gryshchenko

Vice President

403 888 1748

anastasiya.gry@kpliglobal.com

