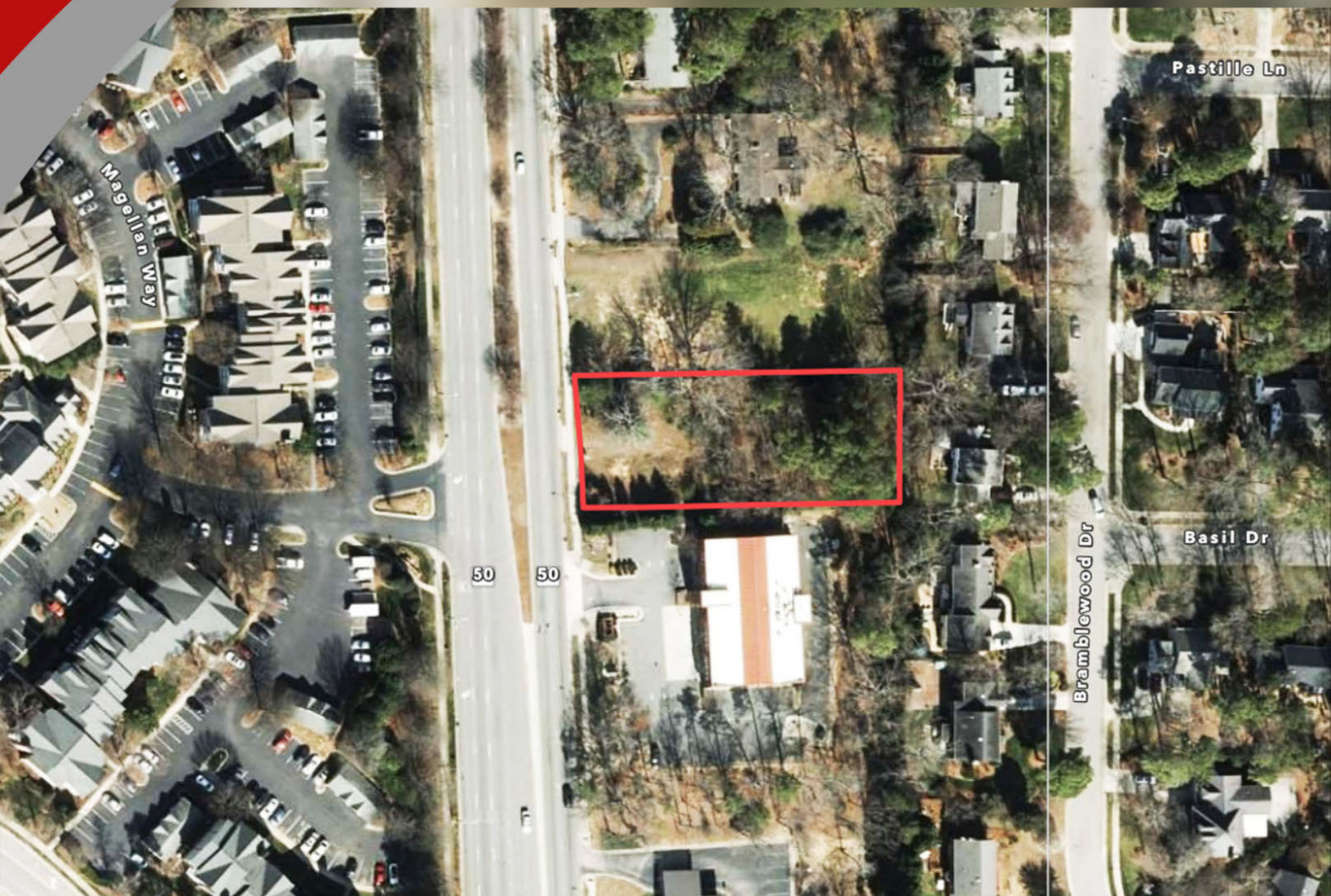


Prime Creedmoor Intersection

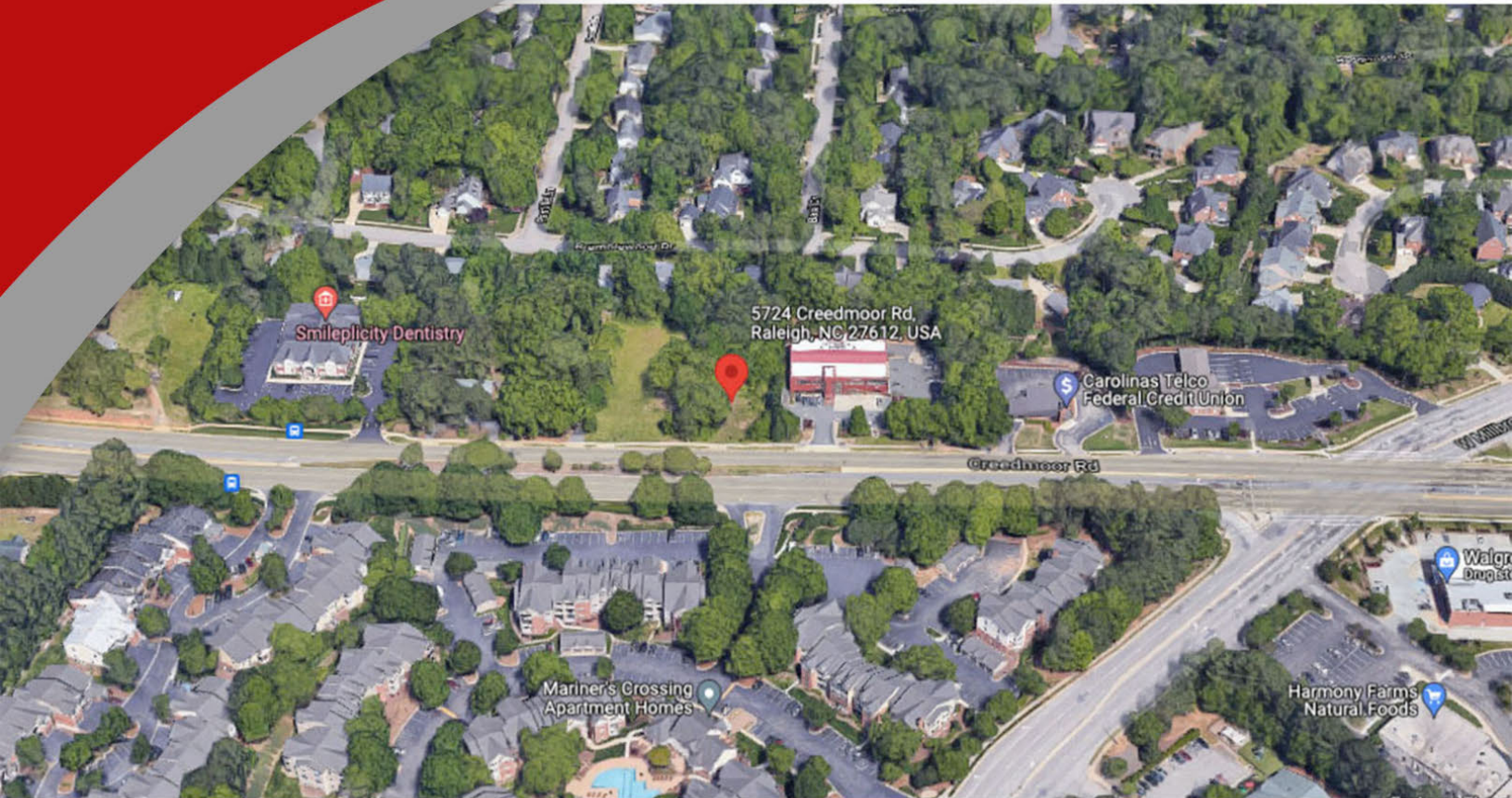
5724 Creedmoor Rd, Raleigh, NC 27612



Arpan Makam / Arpan@mkmcommercial.com / Cell: (919) 889-4747

Office: (919) 907-0760 / 214 W. Millbrook RD, Raleigh NC
www.mkmcommercial.com

General Information



Price: \$495,000

Property Type: Land
Property Sub-type: Commercial
Proposed Use: Office
Sale Type: Investment or Owner User
Lot Size: 0.48 AC
Sale Conditions: Build to Suit
Zoning Description: O&I-1
APN / Parcel ID: 0796.06-48-7663-000

This is a great piece of land. There are so many uses. The lot is lightly wooded. There are no blue line streams and completely developable. We will also consider a build to suit.
Located near a very busy intersection. It is adjacent to a large medical office building. The demographics for this area are amazing. The traffic count is amazing.

This parcel provides a wide range of opportunities due to zoning and location. The parcel is just off the I-440 Beltline, which provides for an easy commute and an exceptional office location. The population is expected to increase 23% over the next year making this an opportunity for any of the other uses including medical, residential, service uses, etc.

Tax Map

5724 Creedmoor Rd, Raleigh, NC 27612



Location

5724 Creedmoor Rd, Raleigh, NC 27612



Scan using QR code scanner app on your smartphone
and directly view the map on your device.

Aerial View

5724 Creedmoor Rd, Raleigh, NC 27612

