

1,222 SF RETAIL SPACE FOR LEASE

CBRE



101

Mainstreet Marketplace

MAIN STREET | HOPKINS | MN

PROPERTY OVERVIEW

Features

- Mixed-use development located in the heart of downtown Hopkins
- 53 unit apartment complex above street level shops
- Easy access to the Lake Minnetonka Bike Trail and within walking distance of the future Southwest Light Rail (LRT)

Co-Tenant



2024 Rates

CAM:	\$3.17
INSURANCE:	\$0.30
REAL ESTATE TAX:	\$5.61
TOTAL:	\$9.08

5,752
GLA (SF)

1,222
AVAILABLE SF

Area Retailers



Traffic Counts

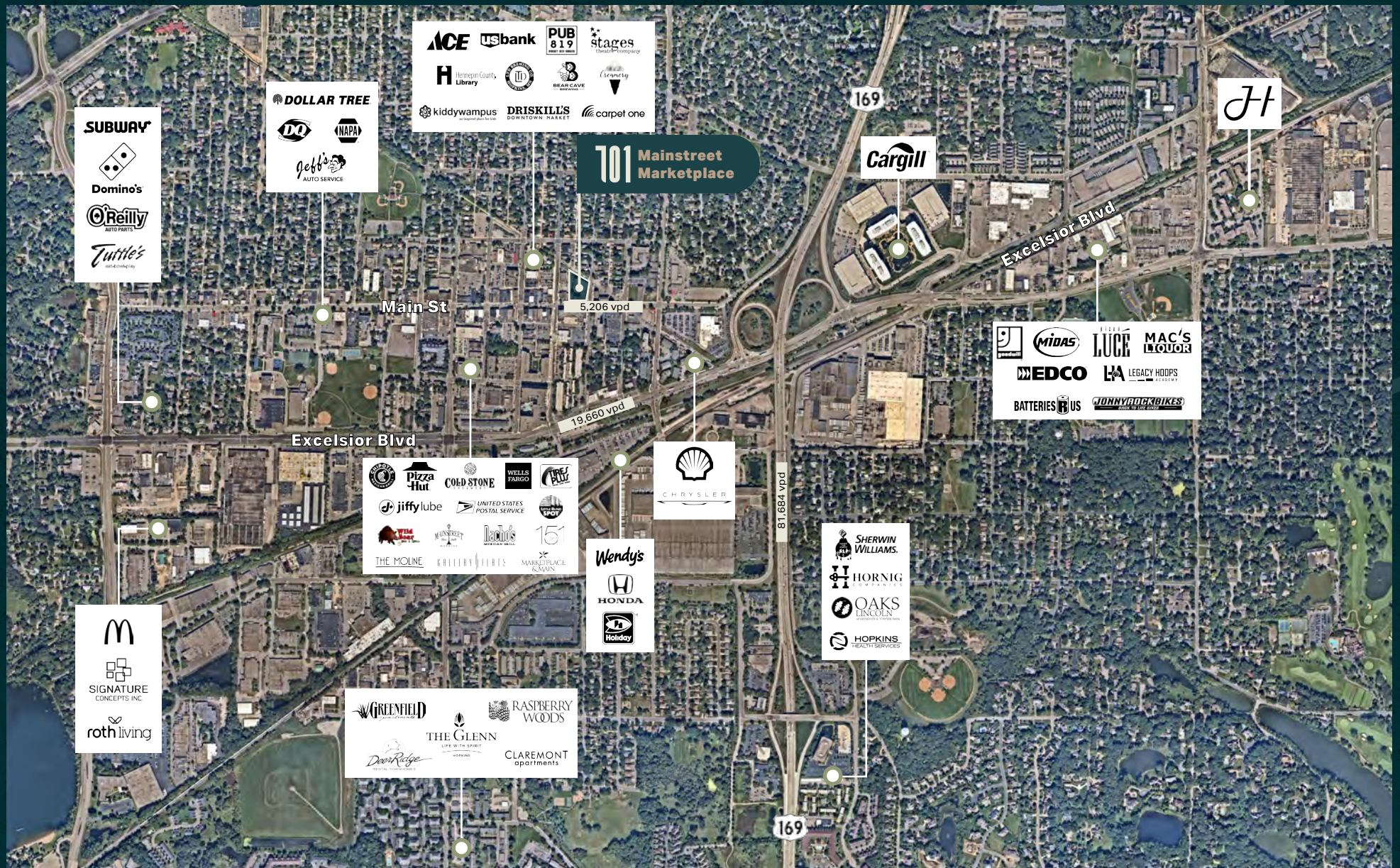
MAIN STREET:	5,206 VPD
EXCELSIOR BLVD:	19,660 VPD
HIGHWAY 169:	81,684 VPD

Demographics

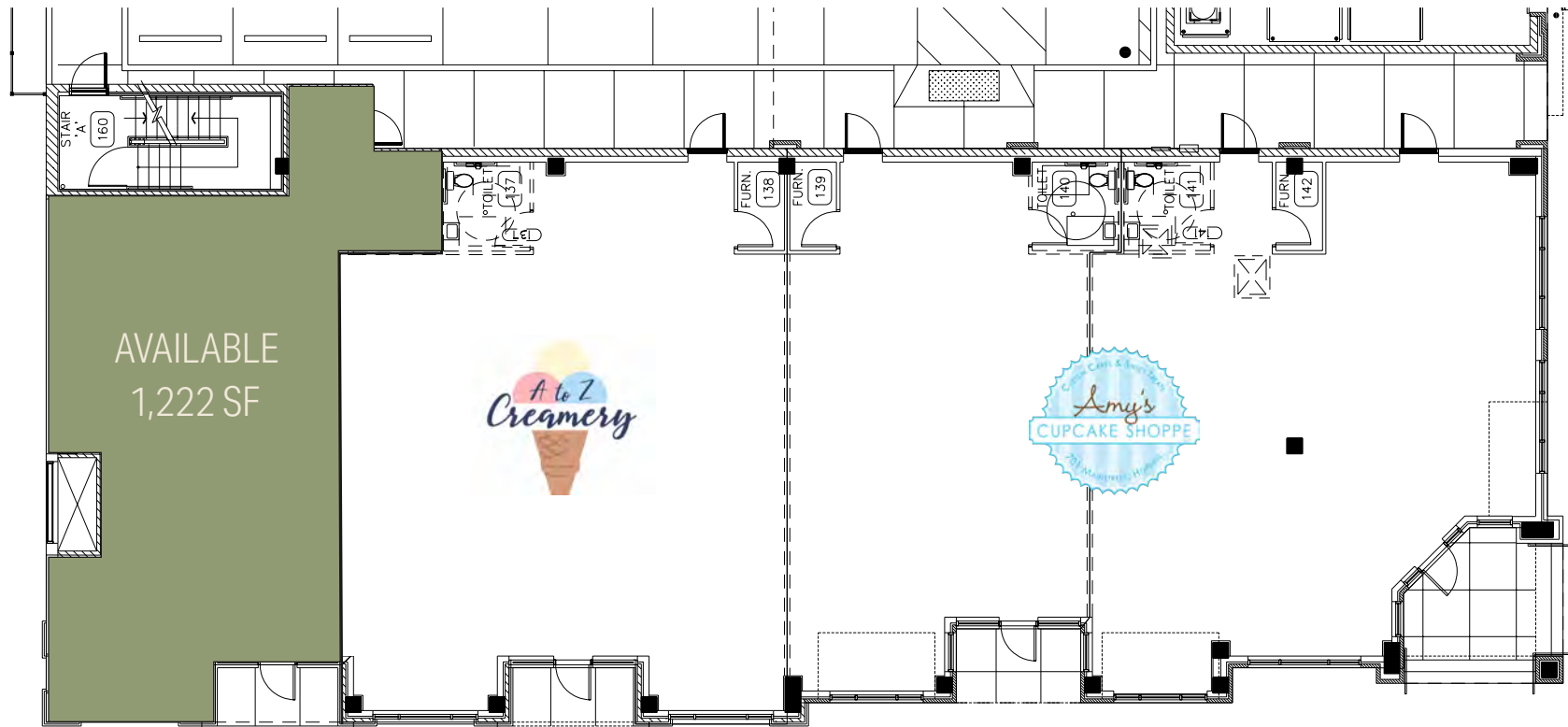
	1 MILE	3 MILES	5 MILES
POPULATION*	12,244	81,276	213,472
DAYTIME POPULATION	15,948	100,304	309,029
HOUSEHOLDS*	5,633	37,248	94,908
AVERAGE HOUSEHOLD INCOME	\$101,511	\$127,965	\$153,630

*Current Year Estimate

AREA MAP



FLOOR PLAN



7th Avenue North

Main Street: 5,206 vpd



**1,222 SF
RETAIL SPACE
FOR LEASE**

101 Mainstreet Marketplace

MAIN STREET | HOPKINS | MN

ROB WISE

Senior Vice President

+1 612 336 4274
rob.wise@cbre.com

CHARLIE HEXUM

First Vice President

+1 612 336 4275
charlie.hexum@cbre.com

COLMAN FAGAN

Associate

+1 612 336 4234
colman.fagan@cbre.com

© 2025 CBRE, Inc. All rights reserved. This information has been obtained from sources believed reliable but has not been verified for accuracy or completeness. CBRE, Inc. makes no guarantee, representation or warranty and accepts no responsibility or liability as to the accuracy, completeness, or reliability of the information contained herein. You should conduct a careful, independent investigation of the property and verify all information. Any reliance on this information is solely at your own risk. CBRE and the CBRE logo are service marks of CBRE, Inc. All other marks displayed on this document are the property of their respective owners, and the use of such marks does not imply any affiliation with or endorsement of CBRE. Photos herein are the property of their respective owners. Use of these images without the express written consent of the owner is prohibited.

CBRE

