

San Francisco

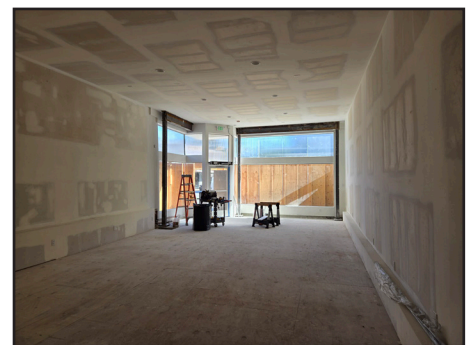
EDWARD PLANT COMPANY, INC.

MISSION

FOR LEASE: 1100 VALENCIA STREET AT 22ND



- New ADA Restroom & New ADA Entry
- Successfully operated by Lucca's Ravioli for over 90 years until their retirement.
- **Size:** +/- 1250 SF
- **Rent:** Upon request
- **Available:** now



For further information contact

Exclusive Agents:
Edward Plant Company, Inc.
CA BRE # 00459284

Ted Plant & Jerry Moskowitz
Phone: 415-421-8098
tplant@edwardplantcompany.com
jmoskowitz@edwardplantcompany.com
CA BRE #00685128 & CA BRE #00341771



601 California St. Suite 1120, San Francisco, CA 94108

p. 415.421.8098

f. 415.421.0184

All information was obtained from sources deemed reliable, however, such information has not been verified and no express representation is made nor any implied as to its accuracy.