

FOR SUBLEASE

# WATERMARK TOWER

530 8 AVENUE SW  
CALGARY, AB



[www.cbre.ca](http://www.cbre.ca)

**CBRE**

# FOR SUBLEASE WATERMARK TOWER

530  
8 AVENUE SW  
Calgary, AB



## SUBLEASE PARTICULARS

### + AVAILABLE PREMISES:

12<sup>th</sup> Floor 2,717 square feet\*  
11<sup>th</sup> Floor 14,074 square feet\*

### + SUBLANDLORD:

Plains Midstream Canada ULC

### + AVAILABILITY:

Immediate

### + SUBLEASE TERM:

Expires December 30, 2022  
Shorter terms will be considered

### + PARKING:

12<sup>th</sup> Floor (1 – 2 stalls)  
11<sup>th</sup> Floor (10 stalls)

### + NET RENTAL RATE:

Negotiable

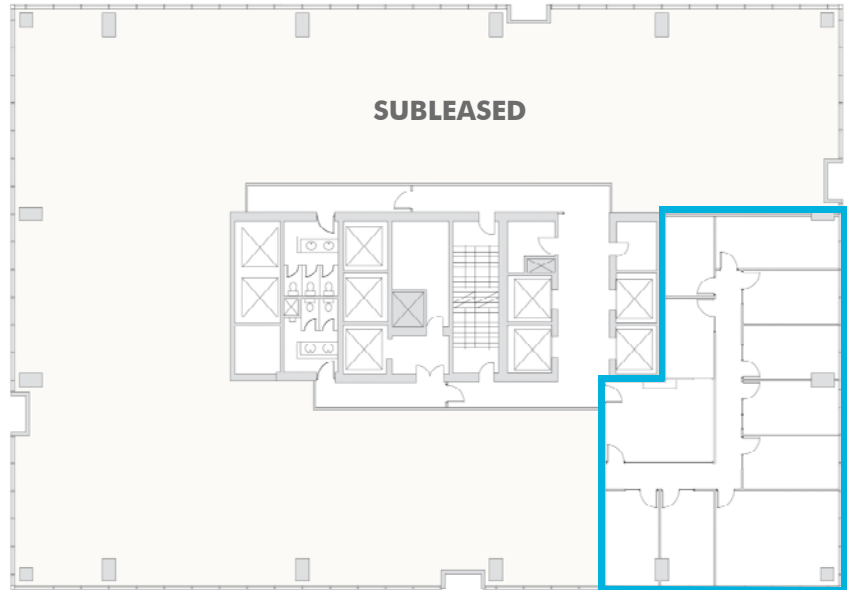
### + ALLOWANCE:

As – is

### + 2018 OP. COSTS & TAXES:

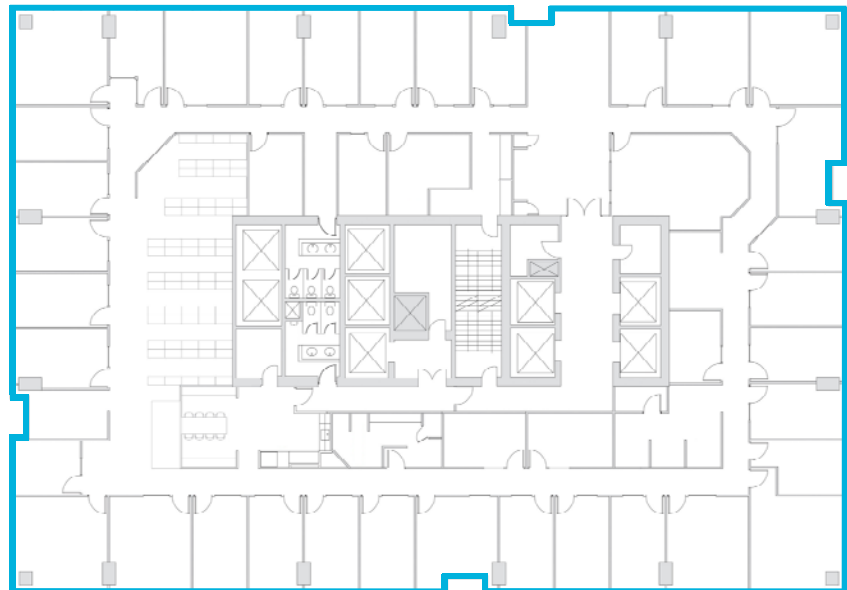
\$21.36 per square foot

\* BOMA 89



**12<sup>TH</sup> FLOOR**  
**2,717 SQ. FT.**

- + 8 exterior offices
- + 2 interior offices



**11<sup>TH</sup> FLOOR**  
**14,074 SQ. FT.**

- + 36 exterior offices
- + 3 interior offices
- + Boardroom
- + 2 kitchens/lounge
- + Reception
- + Copy room
- + Showers
- + Mail room
- + Server room



## CONTACT US

### BRYAN WALSH

Senior Vice President  
403 750 0524  
bryan.walsh@cbre.com

### ANGUS FRASER

Executive Vice President  
403 750 0508  
angus.fraser@cbre.com

© 2018 CBRE, Inc. This information has been obtained from sources believed reliable. We have not verified it and make no guarantee, warranty or representation about it. Any projections, opinions, assumptions or estimates used are for example only and do not represent the current or future performance of the property. You and your advisors should conduct a careful, independent investigation of the property to determine to your satisfaction the suitability of the property for your needs.

Photos herein are the property of their respective owners and use of these images without the express written consent of the owner is prohibited.

**CBRE**