

FOR LEASE

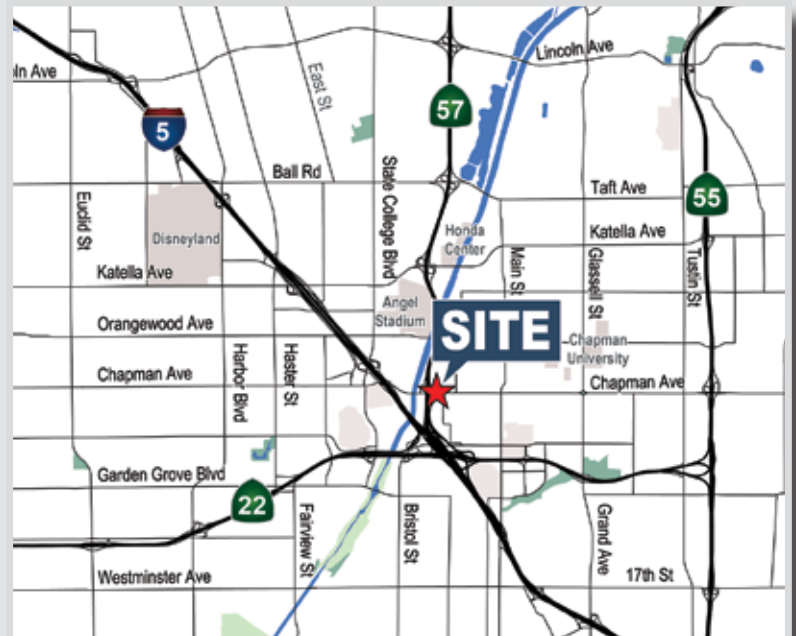
±1,164 - 3,172 SF | Medical Office

2401 W. Chapman Ave. | Ste.100 & 101 | Orange | CA



PROPERTY FEATURES:

- Suite 100 - ±2,008 Sq. Ft. Medical Office Space
- Suite 101 - ±1,164 Sq. Ft. Medical/Dental Space
- Suite 100/101 - ±3,172 Contiguous Medical Space
- Under Two (2) Miles to UCI Medical Center (1.1 miles), CHOC (1.5 miles) and St. Joseph Hospital (1.6 miles)
- Four (4) Private Offices, Reception, Open Area, Storage Room and Restroom
- High Visibility Corner Location
- Abundant Surface Parking with Attractive Landscaping
- Easily Accessible to the Santa Ana (I-5), Orange (57), Garden Grove (22) and Costa Mesa (55) Freeways
- Lease Rate: \$2.65 PSF, Triple Net
- Call to Show



Chris Deason

Senior Vice President
949.263.5347
cdeason@voitco.com
Lic. #01031828

Voit

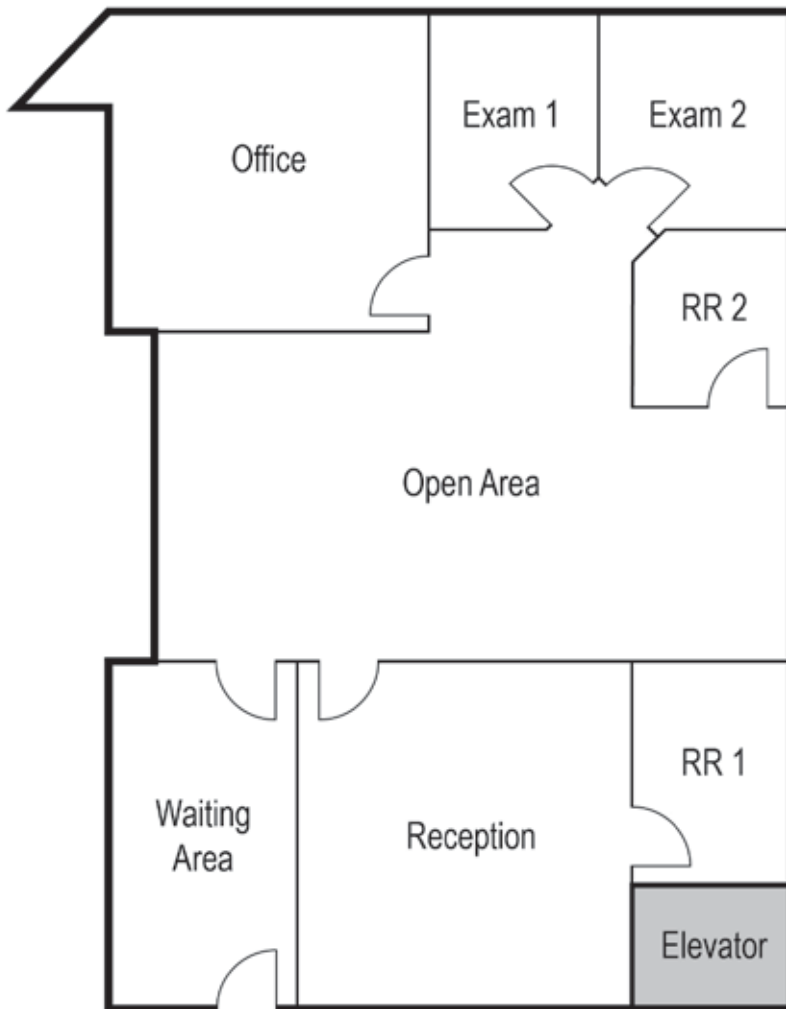
REAL ESTATE SERVICES

FOR LEASE

±1,164 - 3,172 SF | Medical Office

2401 W. Chapman Ave. | Ste.100 & 101 | Orange | CA

SUTIE 100 - ±2,008 SF



Chris Deason

Senior Vice President
949.263.5347
cdeason@voitco.com
Lic. #01031828

2020 Main Street, Suite 100, Irvine, CA 92614
949.851.5100 • 949.261.9092 Fax • Lic #01991785 | www.VoitCo.com

Licensed as a Real Estate Salesperson by the DRE. The information contained herein has been obtained from sources we deem reliable. While we have no reason to doubt its accuracy, we do not guarantee it. ©2024 Voit Real Estate Services, Inc. All Rights Reserved. Lic. #01991785

Voit

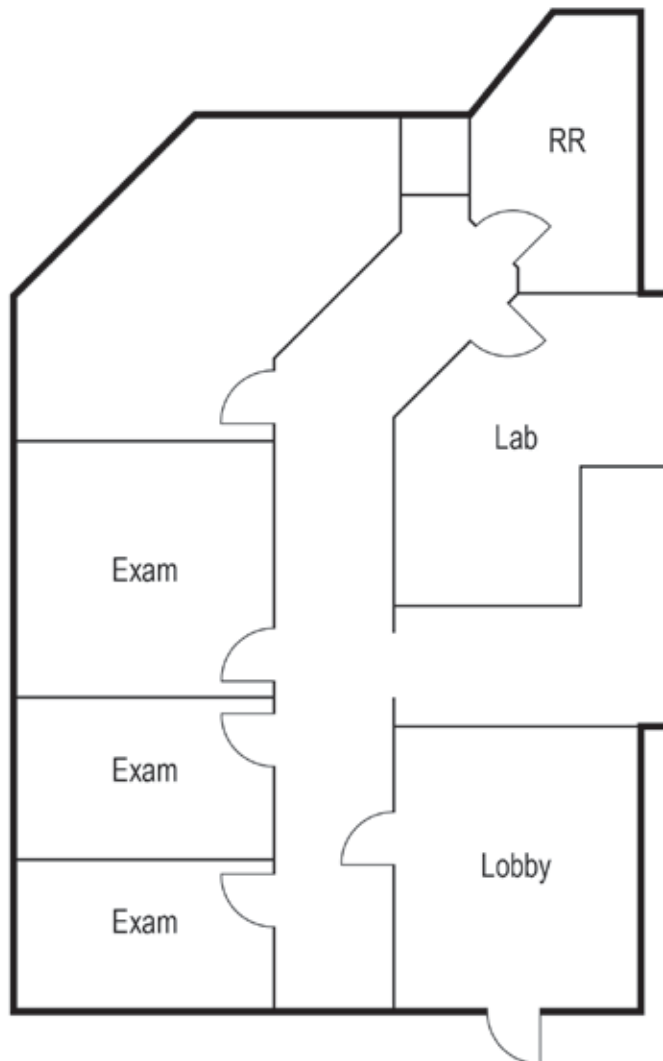
REAL ESTATE SERVICES

FOR LEASE

±1,164 - 3,172 SF | Medical Office

2401 W. Chapman Ave. | Ste.100 & 101 | Orange | CA

SUTIE 101 - ±1,164 SF



Chris Deason

Senior Vice President
949.263.5347
cdeason@voitco.com
Lic. #01031828

2020 Main Street, Suite 100, Irvine, CA 92614
949.851.5100 • 949.261.9092 Fax • Lic #01991785 | www.VoitCo.com

Licensed as a Real Estate Salesperson by the DRE. The information contained herein has been obtained from sources we deem reliable. While we have no reason to doubt its accuracy, we do not guarantee it. ©2024 Voit Real Estate Services, Inc. All Rights Reserved. Lic. #01991785

Voit

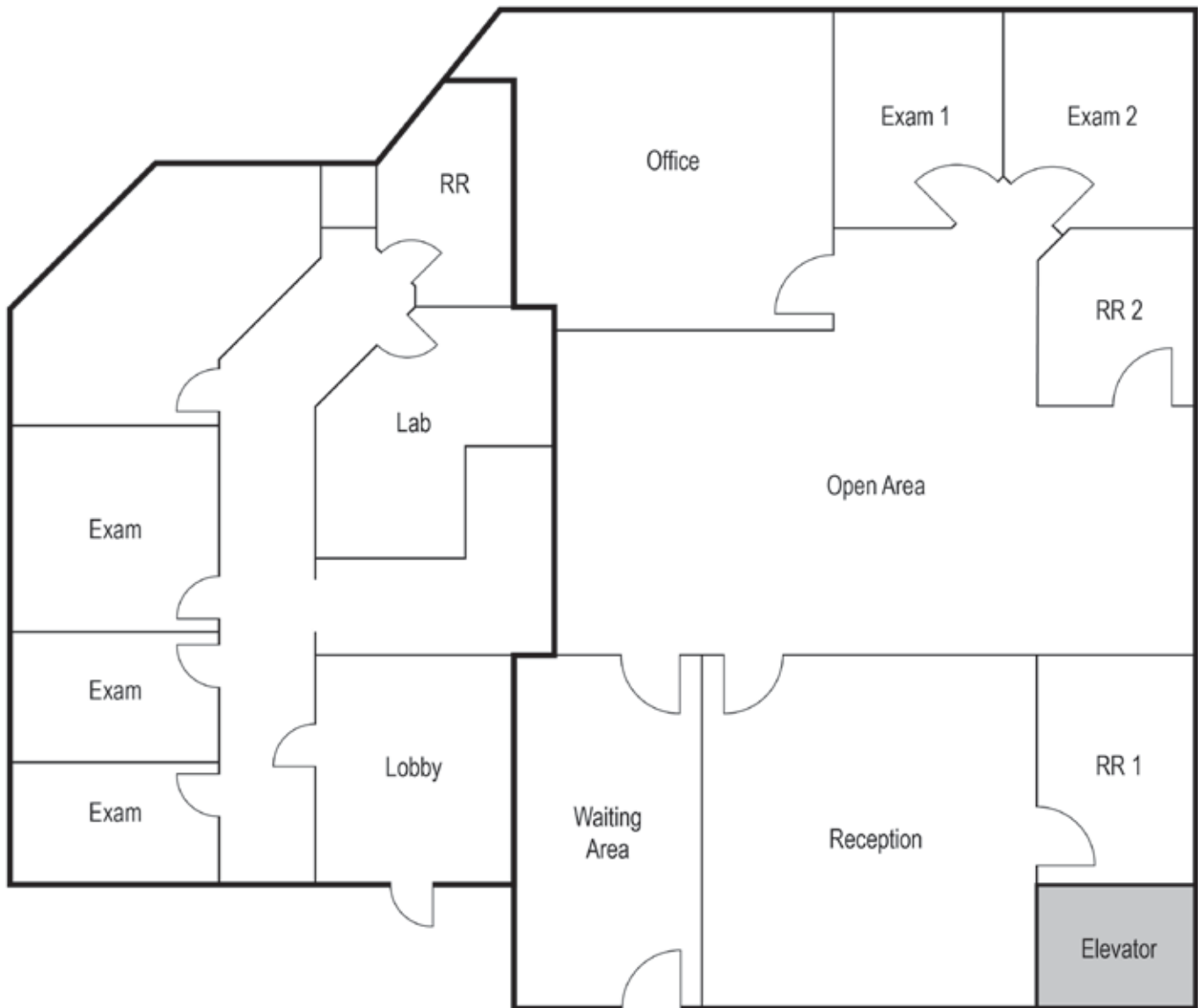
REAL ESTATE SERVICES

FOR LEASE

±1,164 - 3,172 SF | Medical Office

2401 W. Chapman Ave. | Ste.100 & 101 | Orange | CA

SUTIE 100 & 101 - ±3,172 SF



Chris Deason

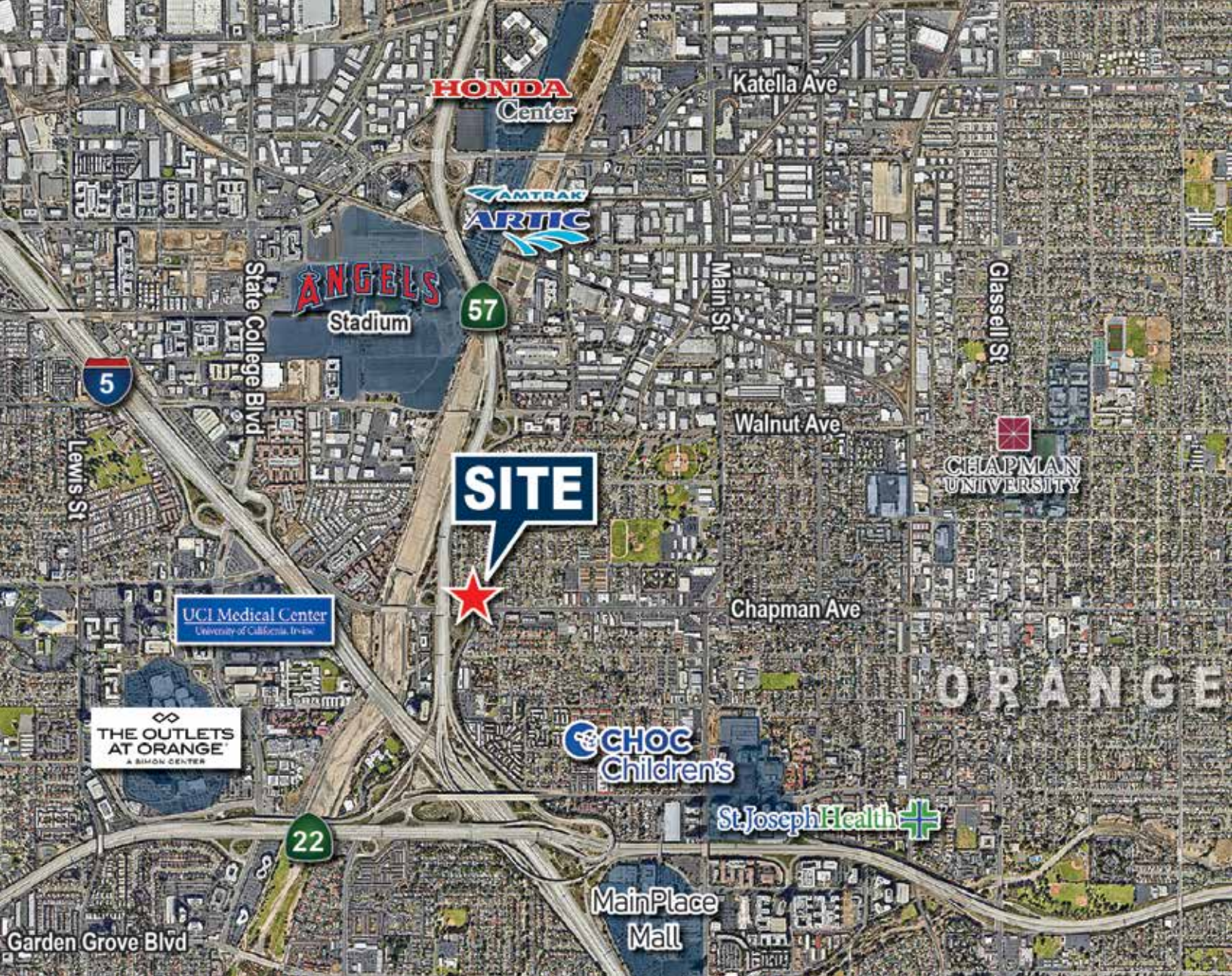
Senior Vice President
949.263.5347
cdeason@voitco.com
Lic. #01031828

2020 Main Street, Suite 100, Irvine, CA 92614
949.851.5100 • 949.261.9092 Fax • Lic #01991785 | www.VoitCo.com

Licensed as a Real Estate Salesperson by the DRE. The information contained herein has been obtained from sources we deem reliable. While we have no reason to doubt its accuracy, we do not guarantee it. ©2024 Voit Real Estate Services, Inc. All Rights Reserved. Lic. #01991785

Voit

REAL ESTATE SERVICES



FOR LEASE

±1,164 - 3,172 SF | Medical Office

2401 W. Chapman Ave. | Ste.100 & 101 | Orange | CA

Chris Deason

Senior Vice President

949.263.5347

cdeason@voitco.com

Lic. #01031828

2020 Main Street, Suite 100, Irvine, CA 92614

949.851.5100 • 949.261.9092 Fax • Lic #01991785 | www.VoitCo.com

Voit

REAL ESTATE SERVICES