

# High-Traffic Retail Space On Popular Shopping Corridor



## 1303 Government Street

VICTORIA, BC

### **CHRIS RUST**

**PERSONAL REAL ESTATE CORPORATION**

Senior Vice President | Brokerage Services

250 386 0005

[chris.rust@cbre.com](mailto:chris.rust@cbre.com)

### **ROSS MARSHALL**

**PERSONAL REAL ESTATE CORPORATION**

Senior Vice President | Brokerage Services

250 386 0004

[ross.marshall@cbre.com](mailto:ross.marshall@cbre.com)

**CBRE**

# 1303 Government Street

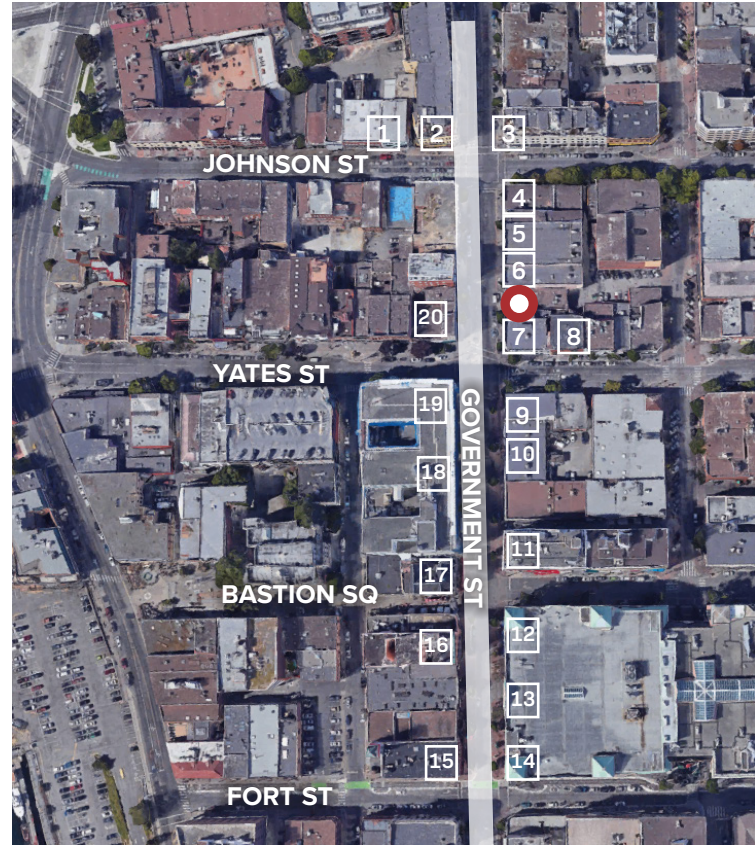
VICTORIA, BC

## THE OPPORTUNITY

Unique opportunity to lease high-profile retail space along Victoria's popular Government Street shopping corridor. The subject space benefits from high foot-traffic counts year-round for both locals and tourists. In addition to its stunning heritage exterior, the space boasts a well-maintained interior with ample natural light throughout. 1303 Government Street is situated next to many successful businesses, including Starbucks, Arc'Teryx, Patagonia, Eddie Bauer, Roots, Fjall Raven, Mountain Equipment Co-op, Lululemon, and more.

## DETAILS

<b>SIZE</b>	2,060 SF
<b>NET RENT</b>	Contact Listing Agents
<b>ADDITIONAL RENT</b>	\$16.50 PSF (2020 estimate)
<b>AVAILABLE</b>	October 1st, 2022 (Negotiable)



- || **EXCELLENT LOCATION ALONG HIGH-TRAFFIC SHOPPING CORRIDOR**
- || **HIGH-PROFILE SIGNAGE ON GOVERNMENT STREET**
- || **BRIGHT SPACE WITH HIGH CEILINGS**
- || **BEAUTIFUL STOREFRONT IN ICONIC HERITAGE BUILDING**

## **○ SUBJECT**

<b>1</b> LULULEMON	<b>11</b> NEW BALANCE
<b>2</b> MEC	<b>12</b> EARLS RESTAURANT
<b>3</b> DAVID'S TEA	<b>13</b> THE BAY
<b>4</b> FJALL RAVEN	<b>14</b> BELOW THE BELT
<b>5</b> GAP	<b>15</b> LUGARO
<b>6</b> ARC'TERYX	<b>16</b> GARRICK'S HEAD PUB
<b>7</b> STARBUCKS	<b>17</b> IRISH TIMES PUB
<b>8</b> PATAGONIA	<b>18</b> RUNNING ROOM
<b>9</b> STREET JEANSWEAR	<b>19</b> EDDIE BAUER
<b>10</b> ROOTS	<b>20</b> ECCO SHOES

## Contact

**CHRIS RUST**  
PERSONAL REAL ESTATE CORPORATION  
Senior Vice President | Brokerage Services  
250 386 0005  
chris.rust@cbre.com

**ROSS MARSHALL**  
PERSONAL REAL ESTATE CORPORATION  
Senior Vice President | Brokerage Services  
250 386 0004  
ross.marshall@cbre.com



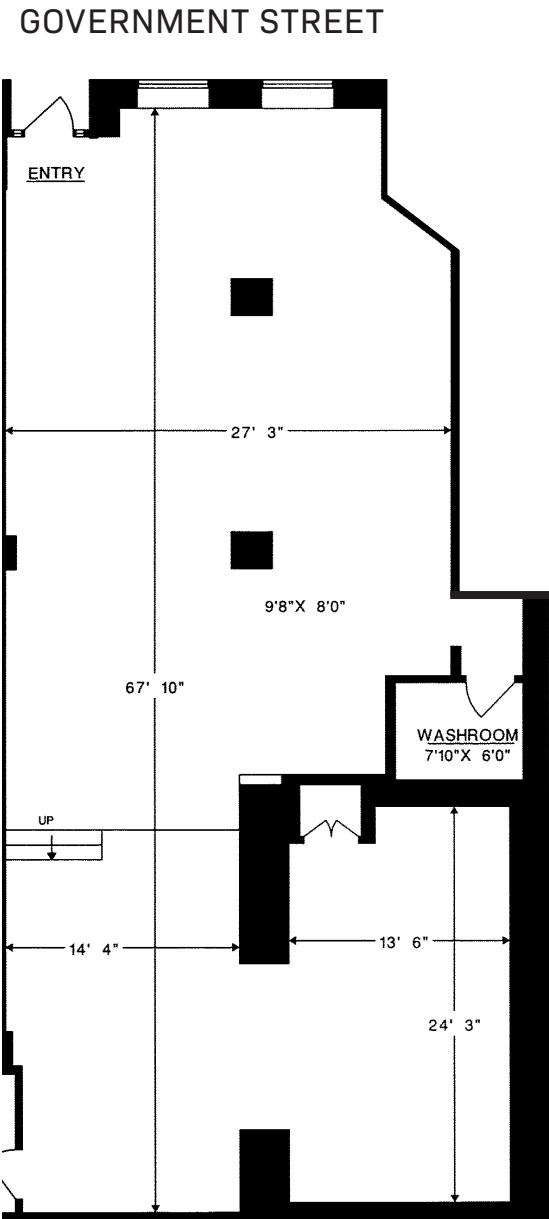
1303 Government Street, VICTORIA, BC

**CBRE**

CBRE LIMITED | 1026 Fort Street | Victoria, BC V8V 3K4 | [www.cbrevictoria.com](http://www.cbrevictoria.com)

This disclaimer shall apply to CBRE Limited, Real Estate Brokerage, and to all other divisions of the Corporation; to include all employees and independent contractors ("CBRE"). The information set out herein, including, without limitation, any projections, images, opinions, assumptions and estimates obtained from third parties (the "Information") has not been verified by CBRE, and CBRE does not represent, warrant or guarantee the accuracy, correctness and completeness of the Information. CBRE does not accept or assume any responsibility or liability, direct or consequential, for the Information or the recipient's reliance upon the Information. The recipient of the Information should take such steps as the recipient may deem necessary to verify the Information prior to placing any reliance upon the Information. The Information may change and/or any property described in the Information may be withdrawn from the market at any time without notice or obligation to the recipient from CBRE. CBRE and the CBRE logo are the service marks of CBRE Limited and/or its affiliated or related companies in other countries. All other marks displayed on this document are the property of their respective owners. All Rights Reserved. Mapping Sources: Canadian Mapping Services [canadamapping@cbre.com](mailto:canadamapping@cbre.com); DMTI Spatial, EnviroNics Analytics, Microsoft Bing, Google Earth.

# High-Traffic Retail Space On Popular Shopping Corridor



1303 Government Street, VICTORIA, BC

**CHRIS RUST**  
PERSONAL REAL ESTATE CORPORATION  
Senior Vice President | Brokerage Services  
250 386 0005  
chris.rust@cbre.com

**ROSS MARSHALL**  
PERSONAL REAL ESTATE CORPORATION  
Senior Vice President | Brokerage Services  
250 386 0004  
ross.marshall@cbre.com

