



Property Highlights

- **Class A Office Space**
4,749 RSF Available for Lease
- 1st floor availability with flexible floorplan to accommodate a variety of uses for Office or Medical Office
- Updated common areas
- Prominent visibility from N. Elm St. with convenient access to/from major thoroughfares including I-840 (Urban Loop)
- Ample parking available for employees and visitors
- Local amenities such as restaurants, shopping, other professional services close by

Ryan Gioffre
Senior Director
+1 336 821 3822
ryan.gioffre@cushwake.com

Kevin Kemp, SIOR
Managing Director
+1 336 812 3307
kevin.kemp@cushwake.com

628 Green Valley Road, Ste. 202
Greensboro, NC 27408
Main +1 336 668 9999
Fax +1 336 668 0888
cushmanwakefield.com



3625 North Elm Street - FOR LEASE

Greensboro, NC 27455



Ryan Goffre
Senior Director
+1 336 821 3822
ryan.gioffre@cushwake.com

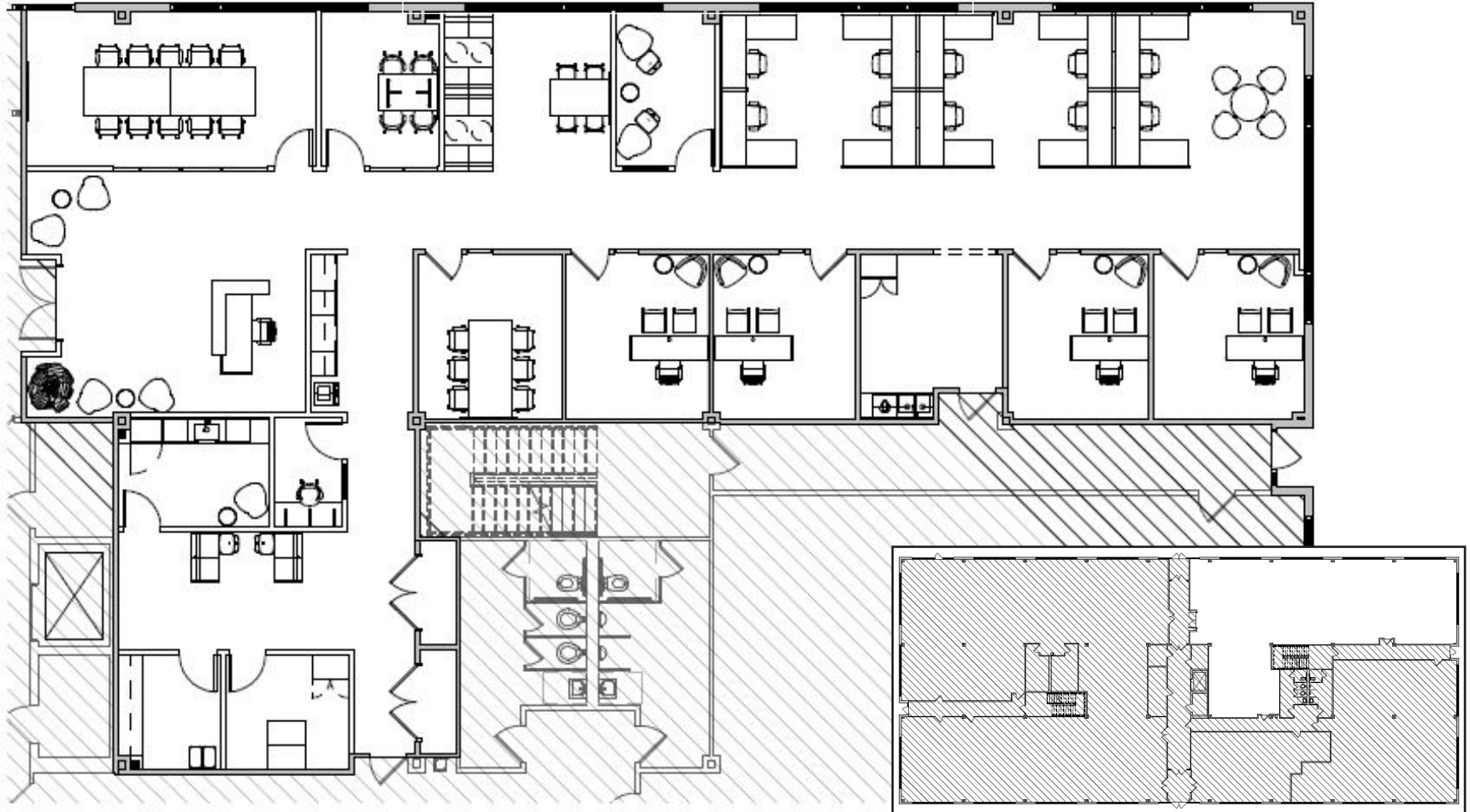
Kevin Kemp, SIOR
Managing Director
+1 336 812 3307
kevin.kemp@cushwake.com



628 Green Valley Road, Ste. 202
Greensboro, NC 27408 | USA
Main +1 336 668 9999
Fax +1 336 668 0888
cushmanwakefield.com

CONCEPTUAL LAYOUT

4,749 RSF AVAILABLE



Ryan Gioffre
Senior Director
+1 336 821 3822
ryan.gioffre@cushwake.com

Kevin Kemp, SIOR
Managing Director
+1 336 812 3307
kevin.kemp@cushwake.com

628 Green Valley Road, Ste. 202
Greensboro, NC 27408 | USA
Main +1 336 668 9999
Fax +1 336 668 0888
cushmanwakefield.com

NEWLY RENOVATED LOBBY



Ryan Gioffre
Senior Director
+1 336 821 3822
ryan.gioffre@cushwake.com

Kevin Kemp, SIOR
Managing Director
+1 336 812 3307
kevin.kemp@cushwake.com

628 Green Valley Road, Ste. 202
Greensboro, NC 27408 | USA
Main +1 336 668 9999
Fax +1 336 668 0888
cushmanwakefield.com