



FOR LEASE

PROPERTY HIGHLIGHTS:

- 4,899 RSF For Lease
- Class A medical office center anchored by DaVita Dialysis
- Surrounded by several medical practices and major health system clinics
- One mile from Franciscan Health Indianapolis
- High visibility along Emerson Avenue with 24,353 average daily traffic
- Prominent building signage available
- Immediate access to I-65

EMERSON PARKE
972 EMERSON PARKWAY
GREENWOOD, IN 46143

CONTACTS:

Charles Yeo, CCIM, CPM
Vice President
317-288-9006
cyeo@cciin.com

Bill McClamroch
Brokerage Associate
317-919-2992
bmclamroch@cciin.com

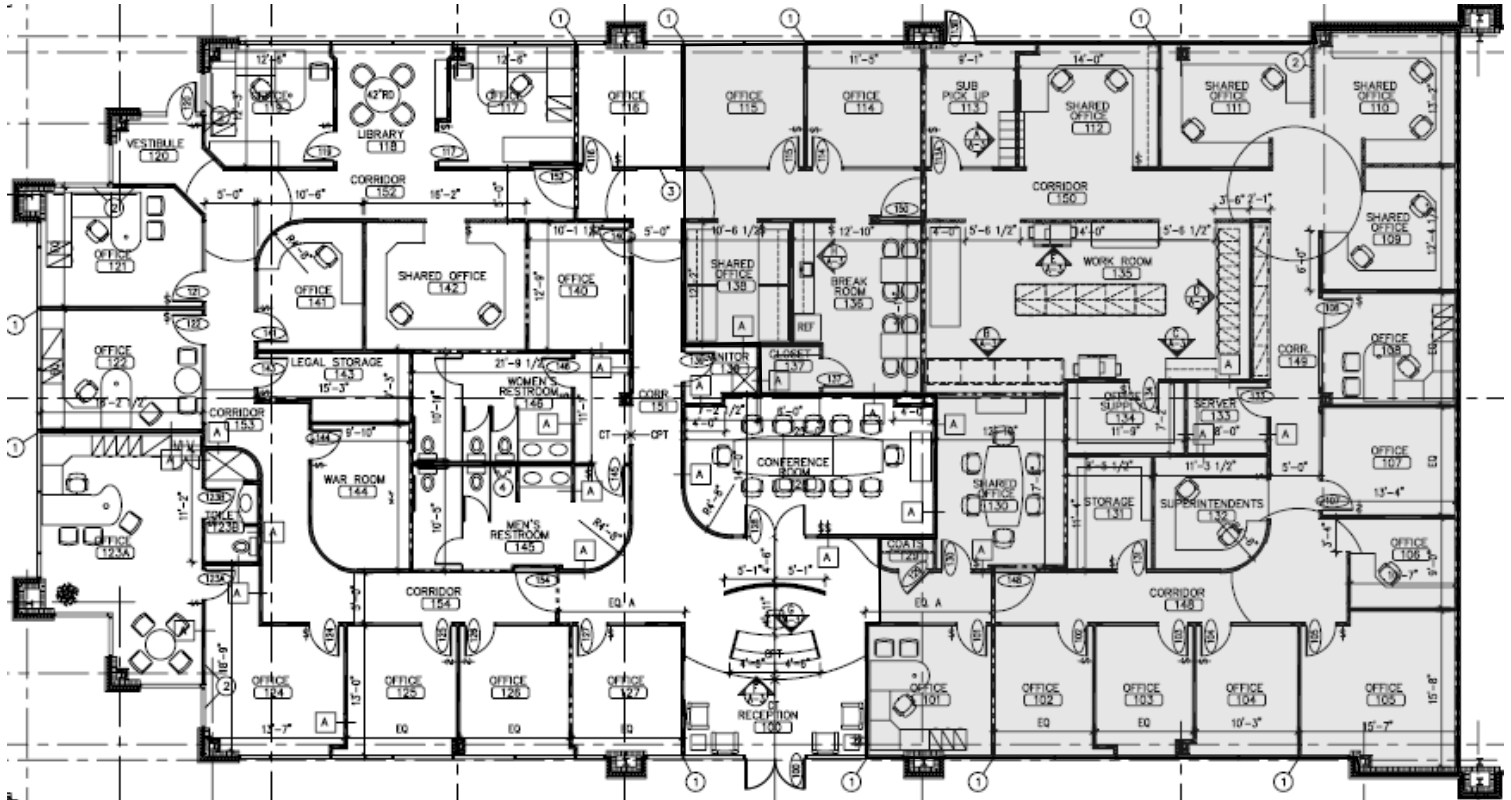
CORNERSTONE COMPANIES
8902 N Meridian St., Suite 205
Indianapolis, IN 46260



For more, visit: CornerstoneCompaniesInc.com

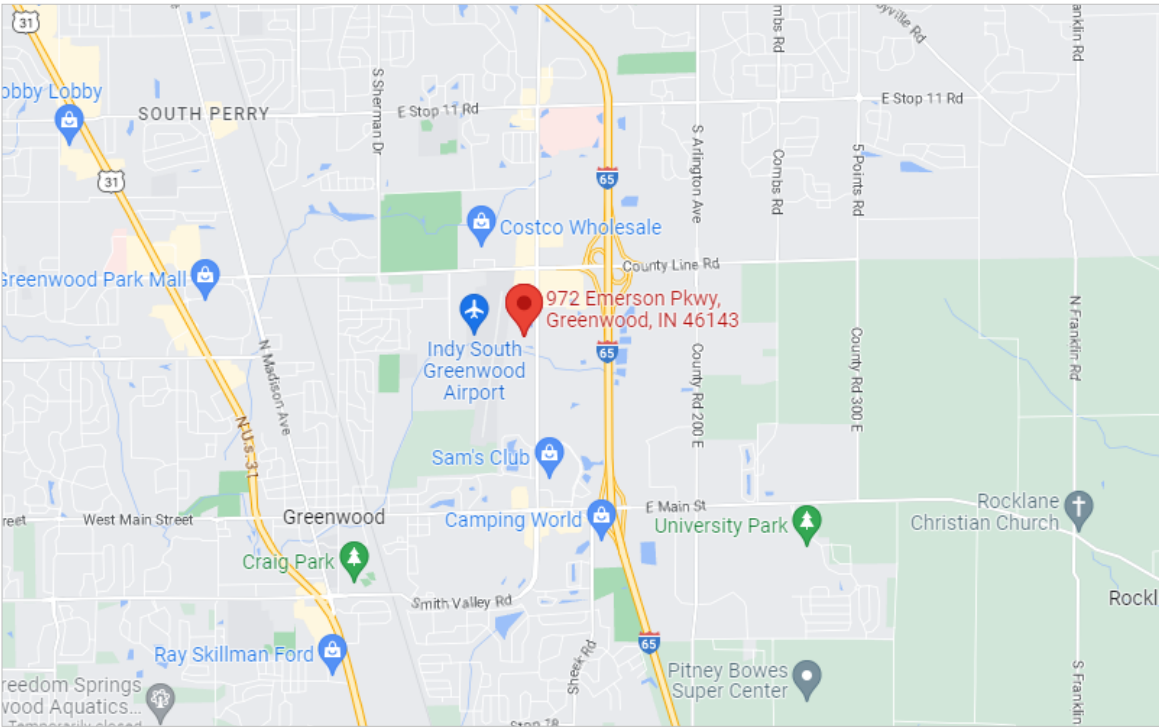
FLOOR PLAN

SUITE A:
10,116 RSF

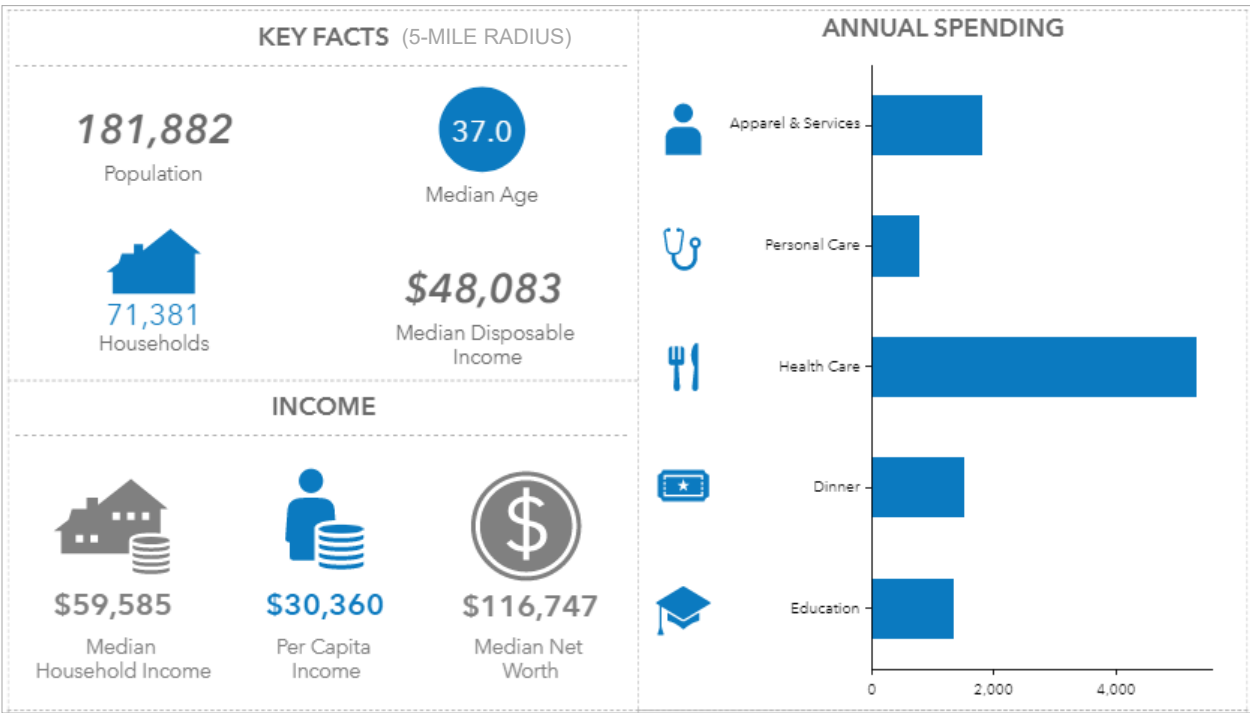


For more, visit: CornerstoneCompaniesInc.com

LOCATION



DEMOGRAPHICS



For more, visit: CornerstoneCompaniesInc.com