



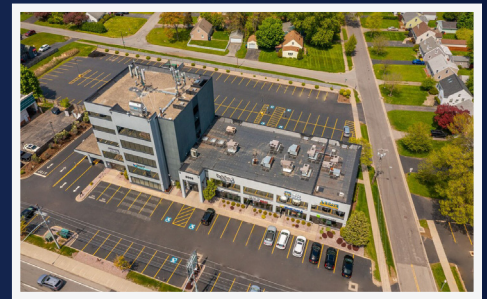
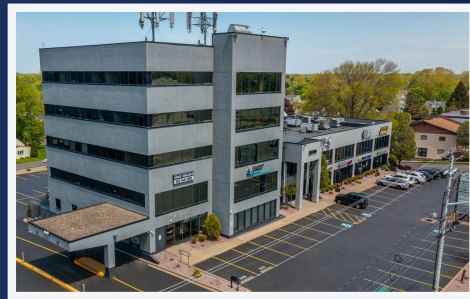
# 2250 - 2300 W Ridge Rd

Greece, NY 14626

## Spaces Available: **4,675 SF**

- » Located in the Desirable East End of Downtown Rochester
- » Turn Key Space With Modern Amenities
- » Ideal for Office Space
- » 45 Surface Parking Spaces, 48 Covered Parking Spaces

Available end-cap position on West Ridge Road in the Town of Greece. Visible location with a traffic count of approximately 43,000 vehicles per day. Current co-tenants include University of Rochester, Beltone, Genesee Regional Bank, and many more. The building is located across from Greece Ridge Center which consists of over one million square feet of retail space.



**Real Estate** *it's in our blood!*  
[www.flaummgmt.com](http://www.flaummgmt.com)

**Contact Us:** 400 Andrews Street #500 | Rochester, NY 14604 | 585.546.4866

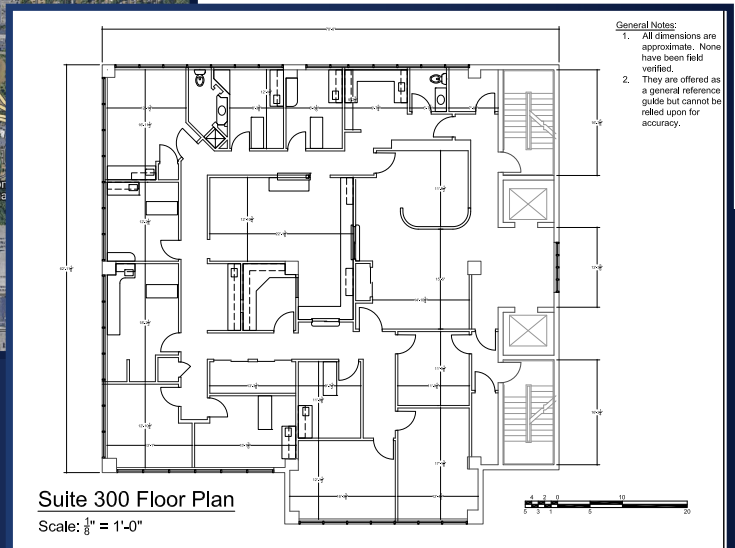
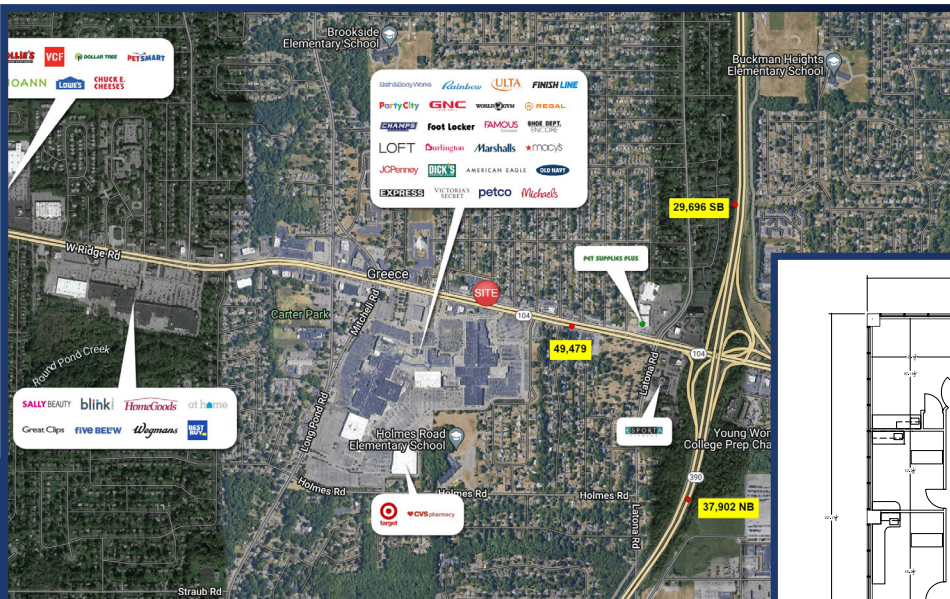




## PROPERTY DETAILS

**Building Type:** Office  
**Building Height:** 5 Stories  
**Building Class:** B  
**Building Size:** 48,450 SF

**Parking:** 100 Parking Spots  
**Typical Floor Size:** 9,690 SF  
**Ceiling Height:** 12'  
**Year Built:** 1987



Let our experienced professionals help you today. With decades of experience, our team brings a wealth of knowledge in real estate, brokerage, and project management.

**Real Estate** *it's in our blood!*  
[www.flaummgf.com](http://www.flaummgf.com)

**Contact Us:** 400 Andrews Street #500 | Rochester, NY 14604 | 585.546.4866