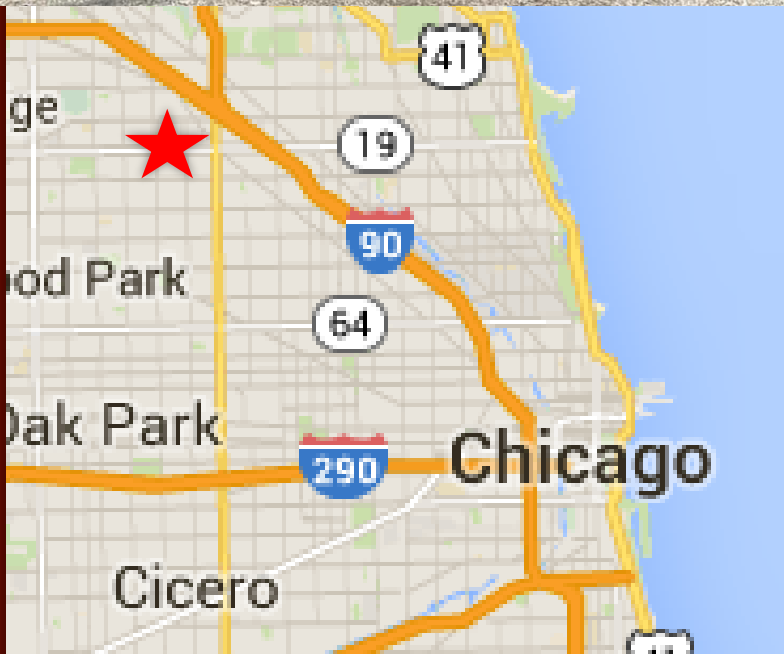


FITNESS SPACE WITH OFF-STREET PARKING FOR LEASE

**5515 W. Irving Park Rd.
20,000 SF FITNESS SPACE
Portage Park, Chicago, IL**

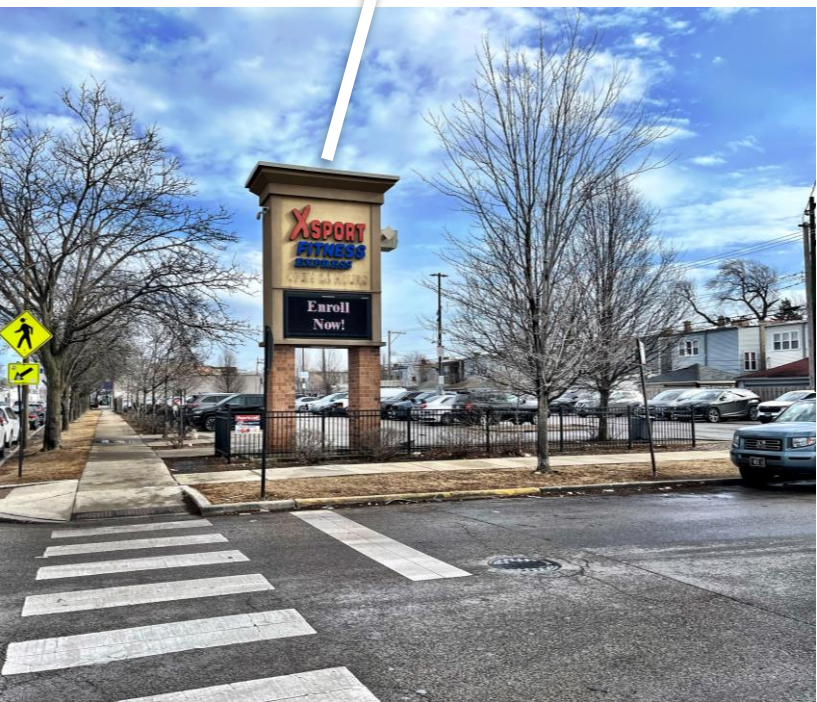


- Fully Built out, turnkey Fitness space along busy Irving Park Rd in Chicago's Portage Park neighborhood
- Dedicated 65-car parking lot.
- 20' bow truss ceiling height includes open fitness area, space for HIIT classes, separate child's play area, large men's and women's locker rooms with showers, steam and sauna.
- Great access, visibility and parking..
- Located in Libertyville's "motor row" and primary shopping corridor.
- 43,718 1-mile population
- \$99,539 1-mile average household income
- 27,068 VPD along Irving Park Rd.

Turnkey Fitness Space on Irving Park Rd.



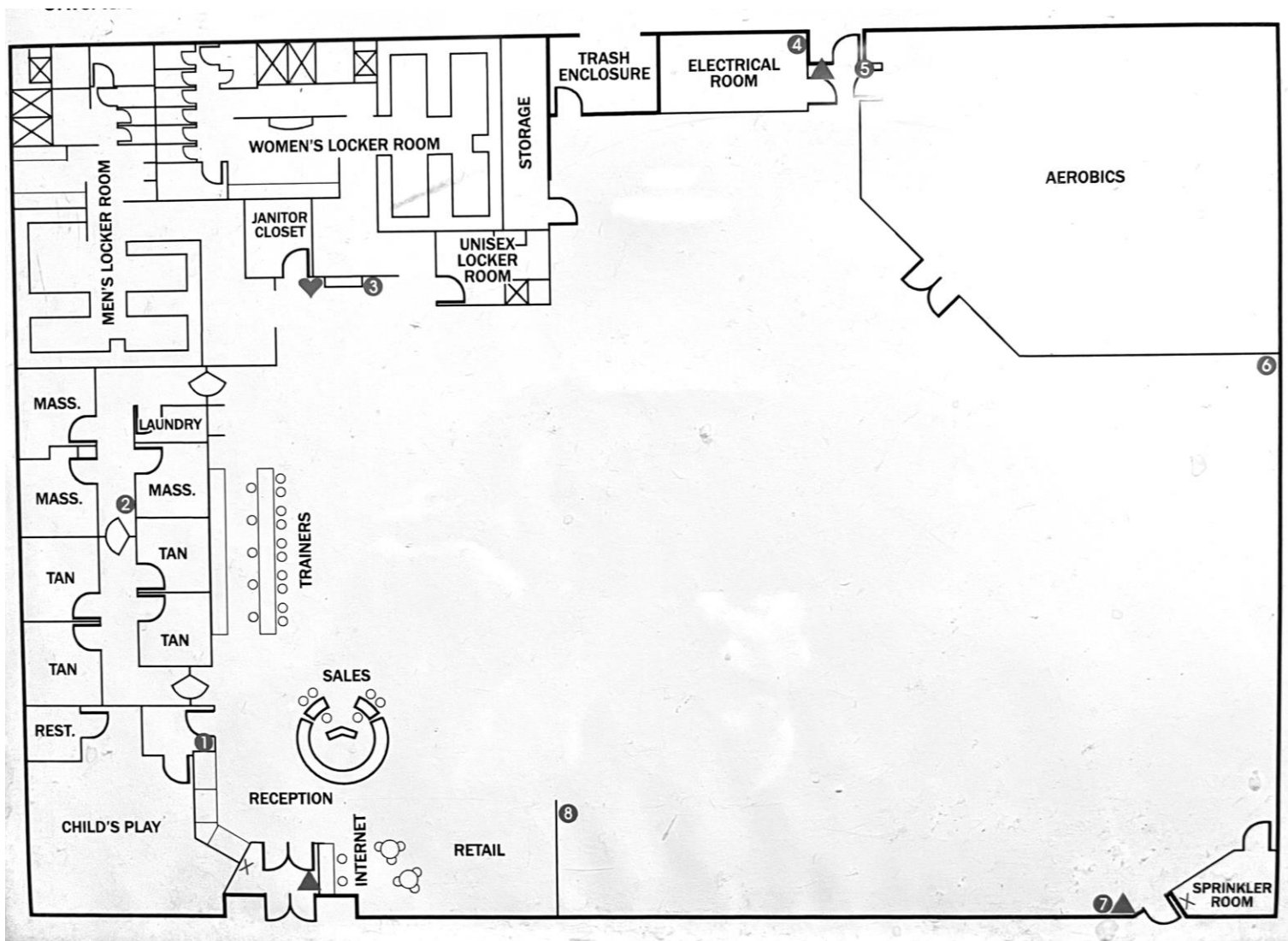
Image Landsat / Copernicus





20,000 SF FITNESS

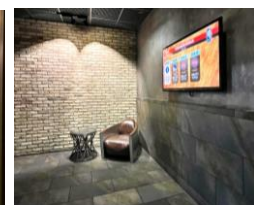
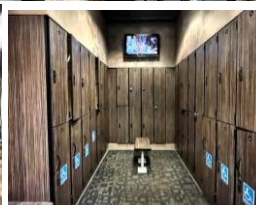
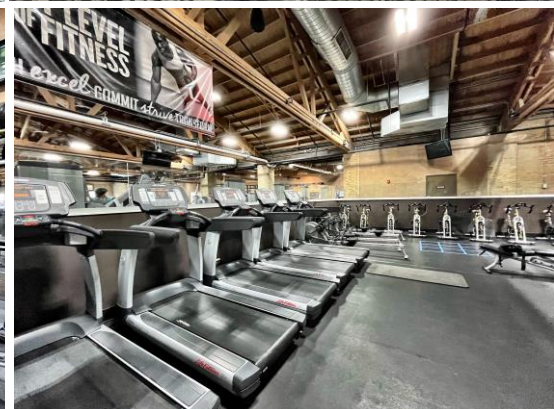
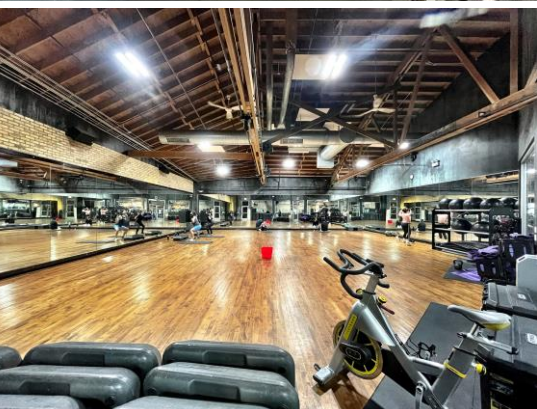
5515 W. IRVING PARK RD., CHICAGO





20,000 SF FITNESS

5515 W. IRVING PARK RD., CHICAGO



Joe Padorr

312.316.2300

jpadorr@seneca-re.com

SENECA
REAL ESTATE GROUP