

2111 West Swann

2111 W Swann Ave., Suite 102, Tampa, FL 33606

Sublease Highlights

- 3,600 RSF
- Sublease Term thru Mar 2027
- Medical Office Space
- Nestled in the vibrant and bustling South Howard (SOHO) / Hyde Park district, renowned for its exceptional dining and shopping opportunities
- Minutes to downtown Tampa, Memorial Hospital, Tampa General Hospital, and St. Joseph's Hospital
- Its convenient access to Downtown Tampa and the Selmon Expressway makes it a premier office destination.



Contact Us

Juan Rodriguez Acosta
Transaction Manager
+1 352 286 4603
juan.rodriquezacosta@cbre.com

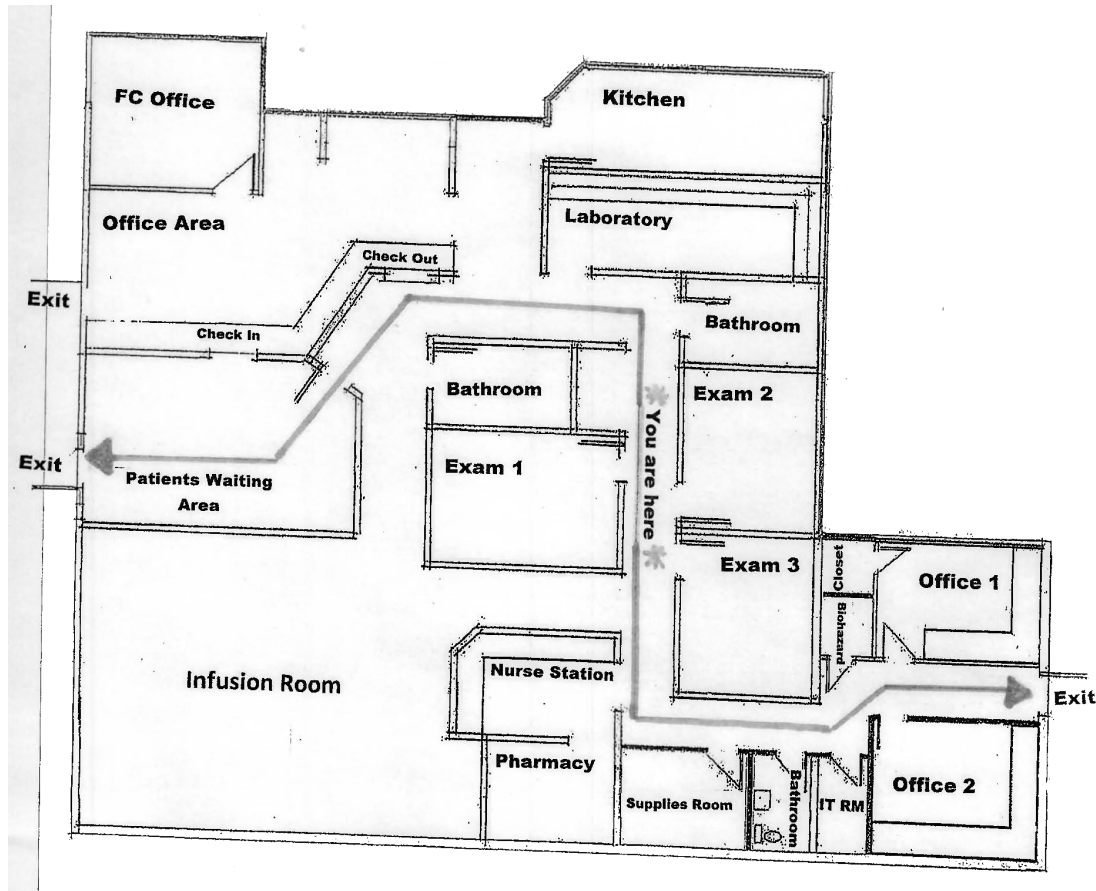
John Heald
Executive Vice President
+1 813 928 6536
john.heald@cbre.com

2111 West Swann

2111 W Swann Avenue | Tampa, FL 33606

For Sublease

Suite 102 - 3,600 RSF



© 2025 CBRE, Inc. All rights reserved. This information has been obtained from sources believed reliable, but has not been verified for accuracy or completeness. You should conduct a careful, independent investigation of the property and verify all information. Any reliance on this information is solely at your own risk. CBRE and the CBRE logo are service marks of CBRE, Inc. All other marks displayed on this document are the property of their respective owners, and the use of such logos does not imply any affiliation with or endorsement of CBRE. Photos herein are the property of their respective owners. Use of these images without the express written consent of the owner is prohibited.