

OFFICE SPACE FOR LEASE

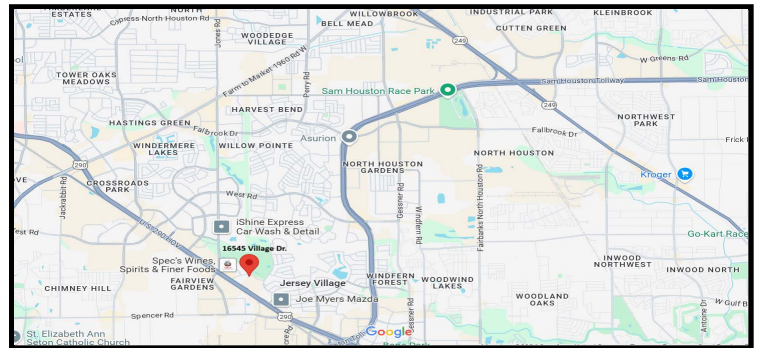
JERSEY VILLAGE OFFICE CONDO

16545 Village Drive, Building C-1, Jersey Village, TX 77040

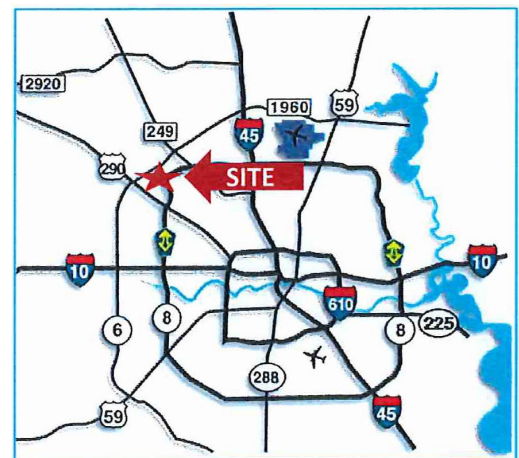
Located within a 3 Building Office Park in Jersey Village



- **Location**
 - Located in popular Northwest Houston area, Jones Road exit, outside the Beltway and US 290, just one block north of US 290.
- **Property Description:**
 - 1,883 sf, 2-story office condo
 - Five offices
 - One office with balcony access
 - Large conference room
 - Kitchenette
- **Points of Interest**
 - Stone and brick exterior
 - Kitchenette with granite counter tops
 - Energy efficient window
 - Sprinklered building
 - Deed restricted office park
 - Monument signage available
 - Highly accessible, but quiet business area
- **Sales Price:** -\$539,500.00



Call to schedule an appointment to tour the building today!



The information herein and listed on Commercial Gateway, Loopnet, CoStar & Showcase is deemed reliable. However, no warranty or representation is made. All prices are subject to change without notice and property is subject to prior lease, sale or withdrawal from the market without notice.

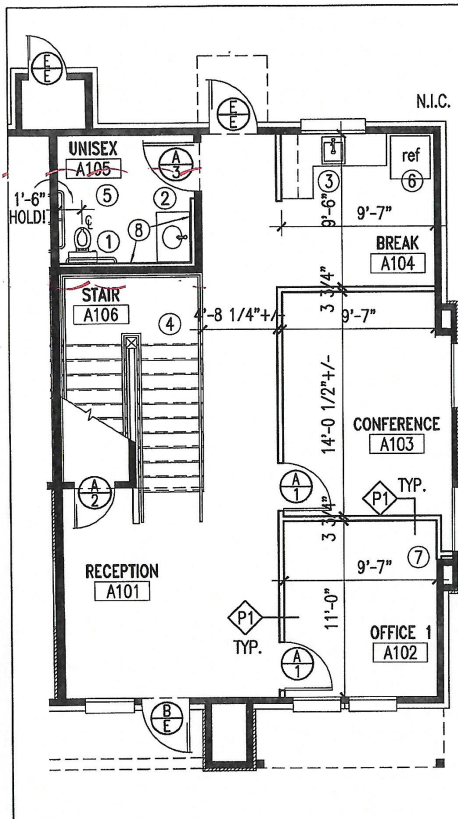
Contact: Margaret Ibrahim, Broker

713.466.8400 Office • 713.818.7765 Cell • Margaret@miptexas.com

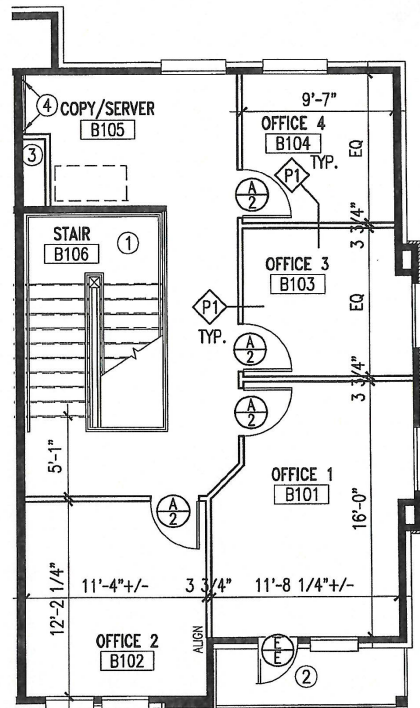
JERSEY VILLAGE OFFICE CONDO
16545 VILLAGE DR., BLDG. C-1, JERSEY VILLAGE, TX 77040

FLOOR PLAN

1,883 SF



Level One
Floor Plan



Level Two
Floor Plan

JERSEY VILLAGE OFFICE CONDO
16545 VILLAGE DR., BLDG. C-1, JERSEY VILLAGE, TX 77040

BUILDING LAYOUT

