



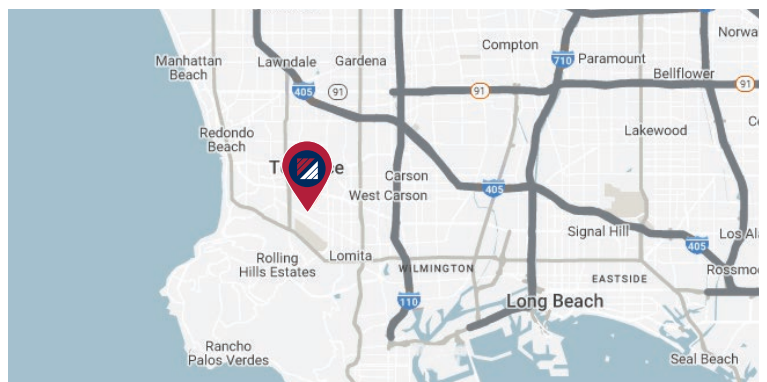
FOR SALE

13,179 SF INDUSTRIAL BUILDING

3105 KASHIWA ST. | TORRANCE | CA | 90505

PROPERTY HIGHLIGHTS:

- 13,179 SF on 27,333 SF of Land
- One (1) Ground Level Door
- 16' Clear Height
- Torrance Airport Industrial Park
- Adjacent to Torrance Memorial Medical Center



FOR MORE INFORMATION, PLEASE CONTACT:

JEFF JORGE

Vice President
M: 401.742.9122
jjorge@daumcommercial.com
DRE License: #01947947

BRIAN JORGE

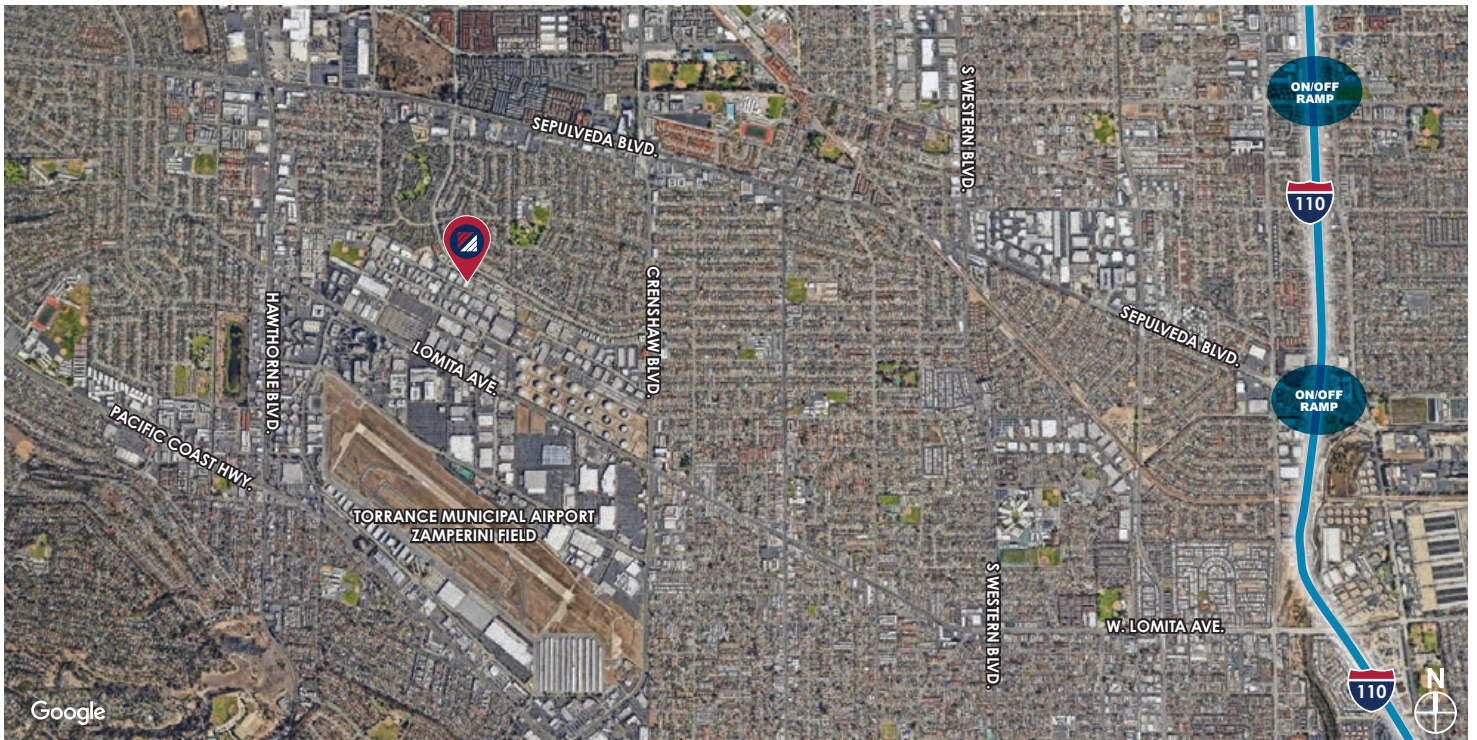
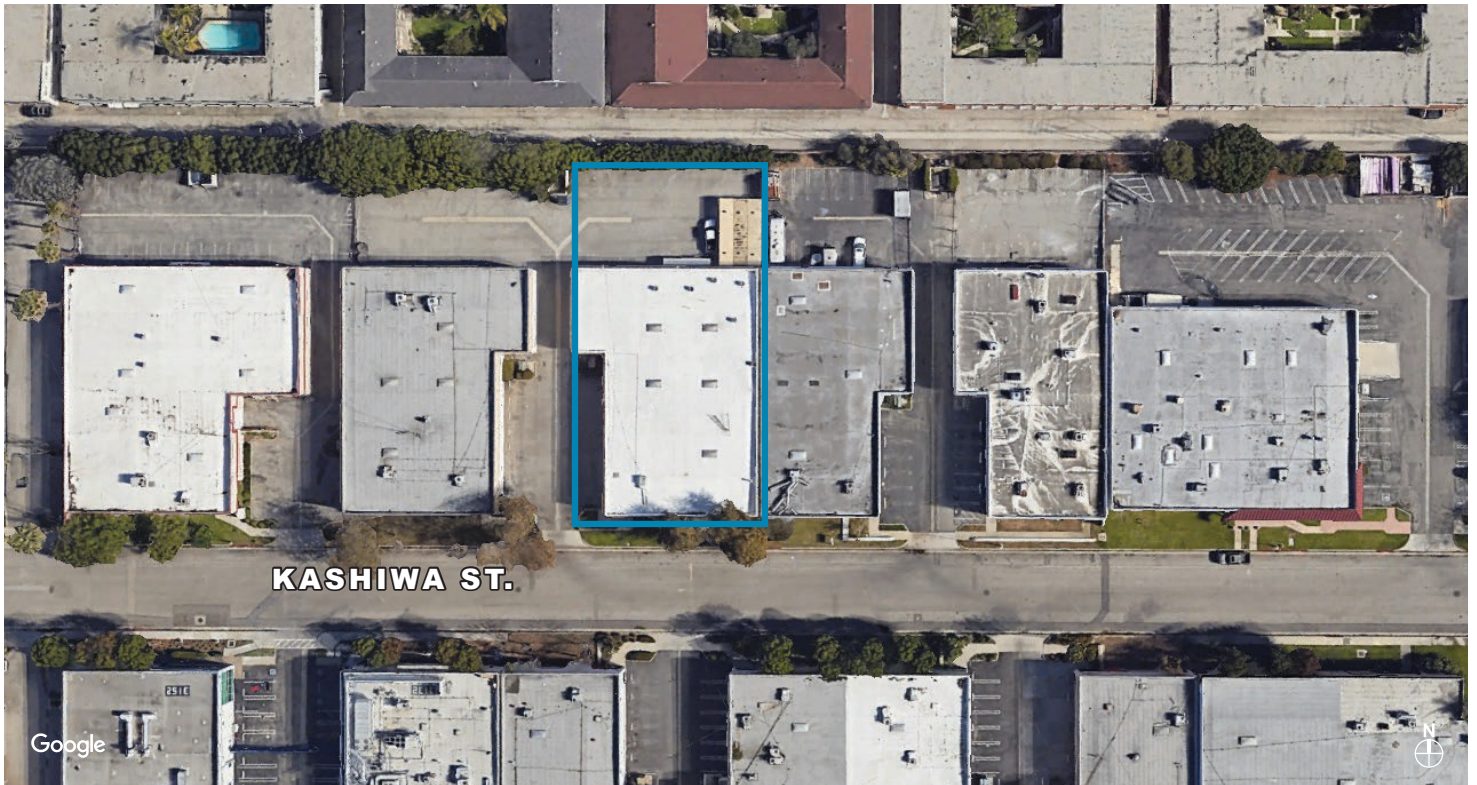
Vice President
M: 401.741.0959
BJorge@daumcommercial.com
DRE License: #01947601

JERRY SACKLER

Executive Vice President
P: 213.270.2267 | F: 213.559.9103
jsackler@daumcommercial.com
DRE License: #01098039



AERIALS



FOR MORE INFORMATION, PLEASE CONTACT:

JEFF JORGE

Vice President
M: 401.742.9122
jjorge@daumcommercial.com
DRE License: #01947947

BRIAN JORGE

Vice President
M: 401.741.0959
BJorge@daumcommercial.com
DRE License: #01947601

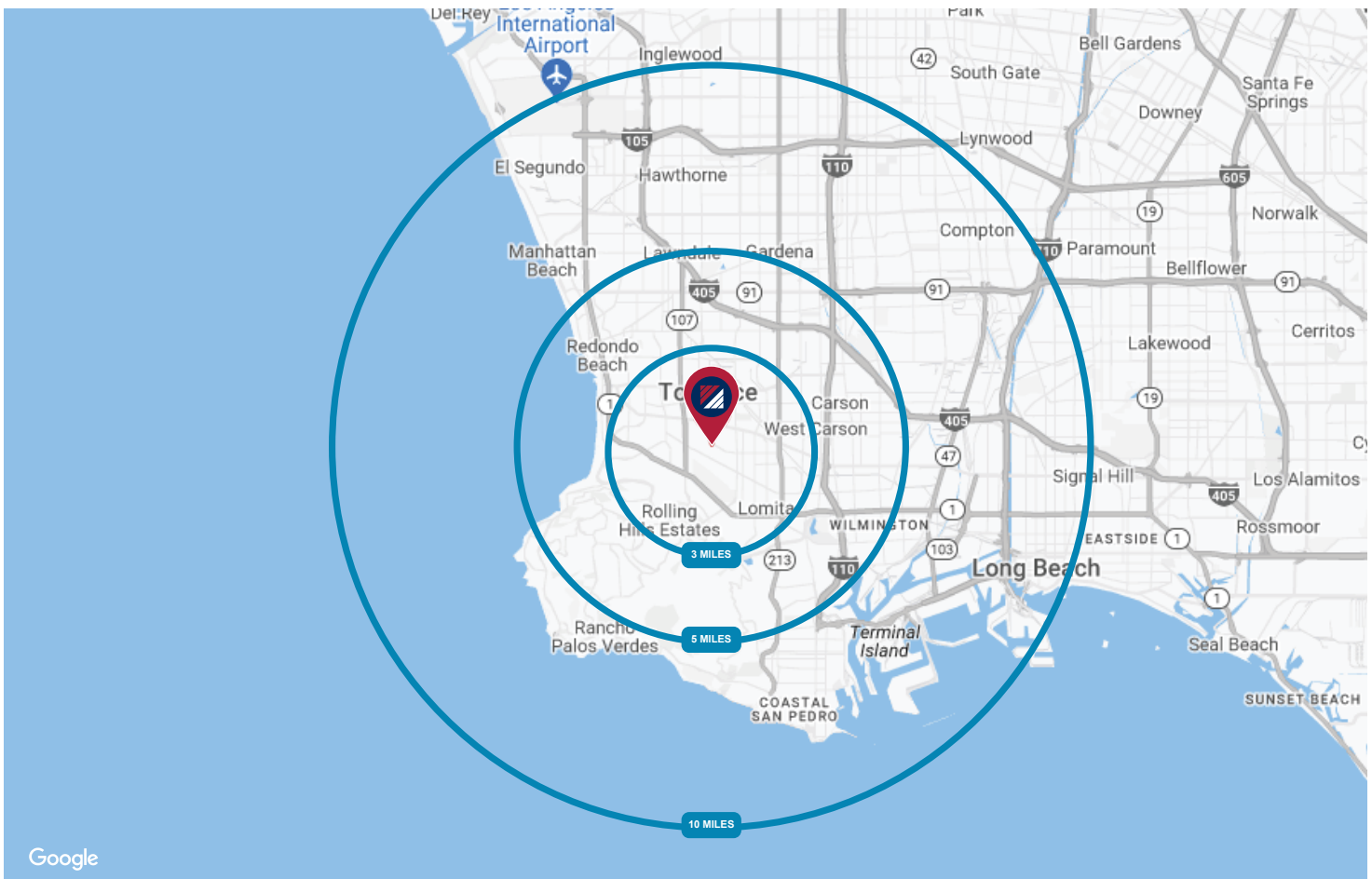
JERRY SACKLER

Executive Vice President
P: 213.270.2267 | F: 213.559.9103
jsackler@daumcommercial.com
DRE License: #01098039



TRAFFIC COUNTS

Collection Street	Cross Street	Traffic Volume	Dist. from Subject Property
W 235th St	Juniper Ave SE	11,253	0.09 mi
Juniper Ave	W 234th St N	2,496	0.15 mi
W 235th St	Juniper Ave NW	11,931	0.17 mi
Maple Ave	Nadine Cir N	11,566	0.20 mi
Maple Ave	Nadine Cir W	281	0.24 mi
Nadine Cir	Maple Ave E	3,225	0.25 mi
Early Ave	Fujita St NE	4,083	0.30 mi
Lomita Blvd	Hospital Dr NW	31,355	0.30 mi
Lomita Blvd	Madison St NW	30,048	0.41 mi
Maple Ave	W 226th St N	9,160	0.42 mi



FOR MORE INFORMATION, PLEASE CONTACT:

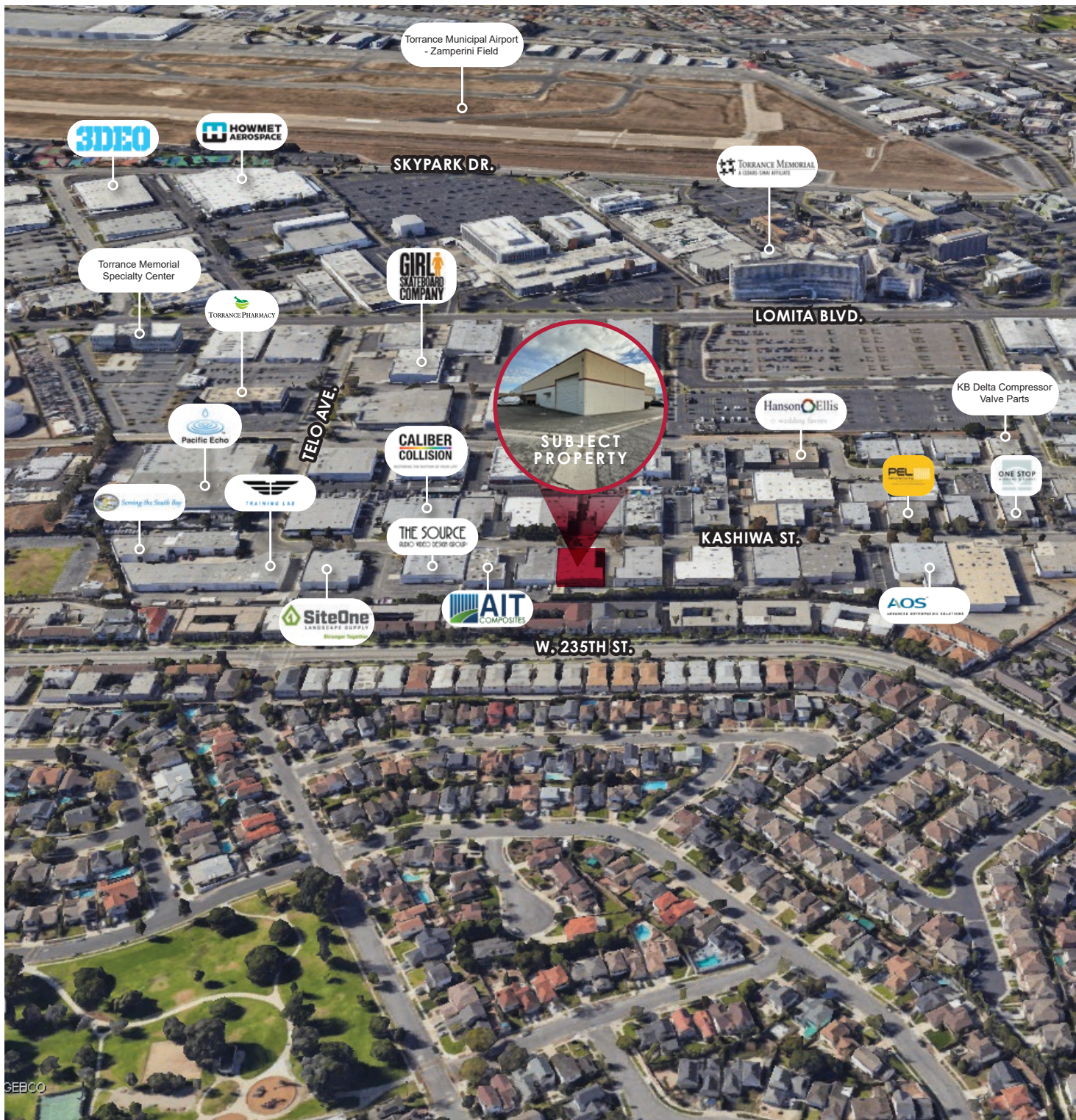
JEFF JORGE
 Vice President
 M: 401.742.9122
 jjorge@daumcommercial.com
 DRE License: #01947947

BRIAN JORGE
 Vice President
 M: 401.741.0959
 BJorge@daumcommercial.com
 DRE License: #01947601

JERRY SACKLER
 Executive Vice President
 P: 213.270.2267 | F: 213.559.9103
 jsackler@daumcommercial.com
 DRE License: #01098039



AMENITIES MAP



FOR MORE INFORMATION, PLEASE CONTACT:

JEFF JORGE

Vice President
 M: 401.742.9122
 jjorge@daumcommercial.com
 DRE License: #01947947

BRIAN JORGE

Vice President
 M: 401.741.0959
 BJorge@daumcommercial.com
 DRE License: #01947601

JERRY SACKLER

Executive Vice President
 P: 213.270.2267 | F: 213.559.9103
 jsackler@daumcommercial.com
 DRE License: #01098039



D/AQ Corp. #01129558. Maps Courtesy ©Google & ©Microsoft. Although all information is furnished regarding for sale, rental or financing is from sources deemed reliable, such information has not been verified and no express representation is made nor is any to be implied as to the accuracy thereof, and it is submitted subject to errors, omissions, changes of price, rental or other conditions, prior sale, lease or financing, or withdrawal without notice.