

310 A St.

Fillmore, CA 93015



Industrial Lot for Sublease

Through December 31, 2029

Matt Ehrlich

Executive Vice President
818.933.2364 direct
mehrlich@naicapital.com
Cal DRE Lic #01936772

Sean Iezza

Associate
818.742.1620 direct
siezza@naicapital.com
Cal DRE Lic #02220089

NAI Capital Commercial

15821 Ventura Blvd., #320
Encino, CA 91436
818.905.2400
naicapital.com

NAICapital
COMMERCIAL REAL ESTATE SERVICES, WORLDWIDE

Property Highlights



Asking Rate

\$9,900/Month Gross



Term

Through December 31, 2029



Building Size

3,430 SF



Lot Size

62,290 SF (1.43 AC)



Zoning

M1

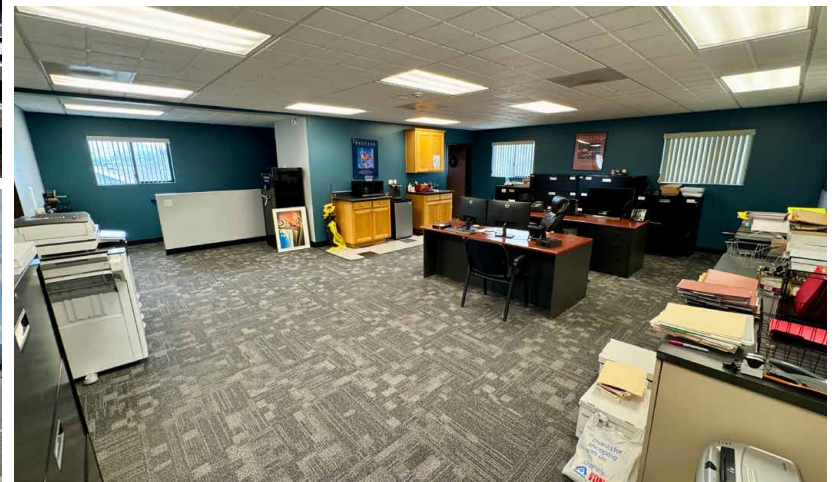
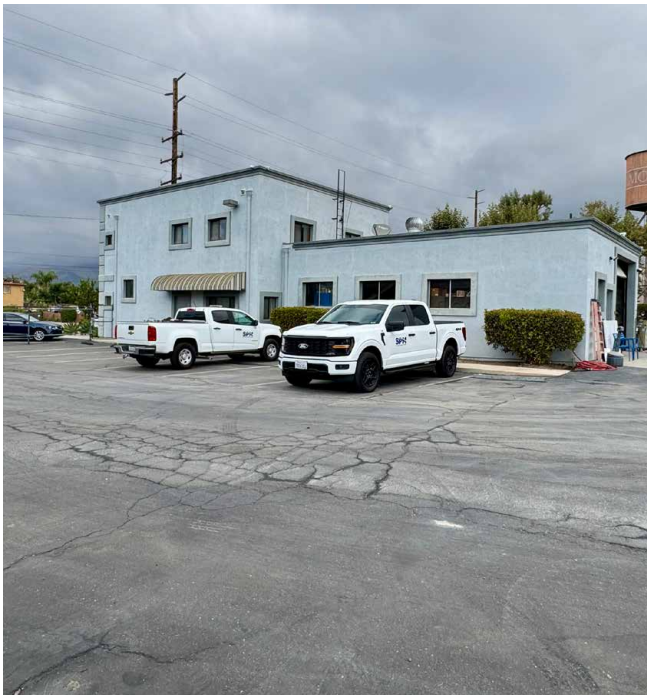


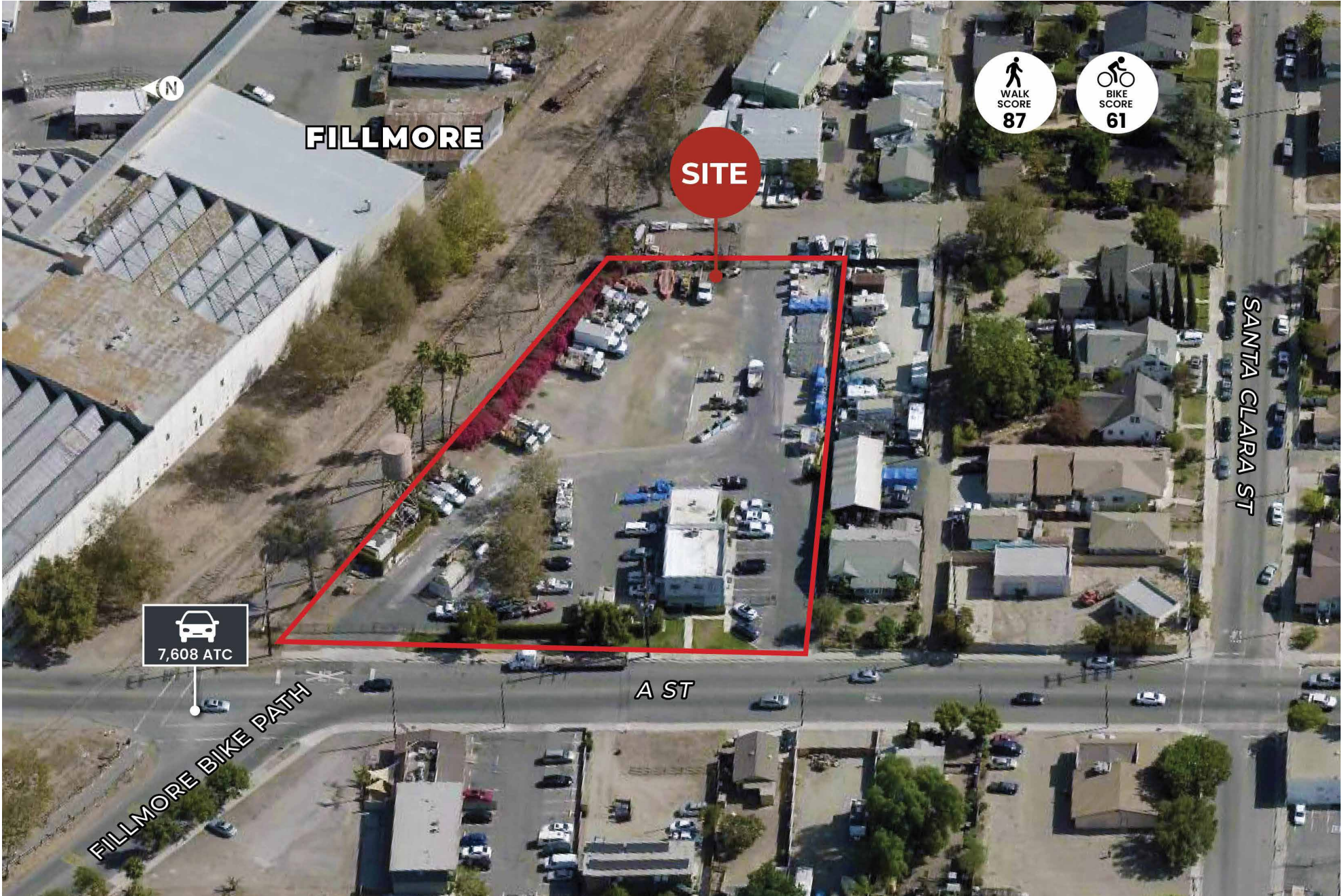
APN

053-0-060-690

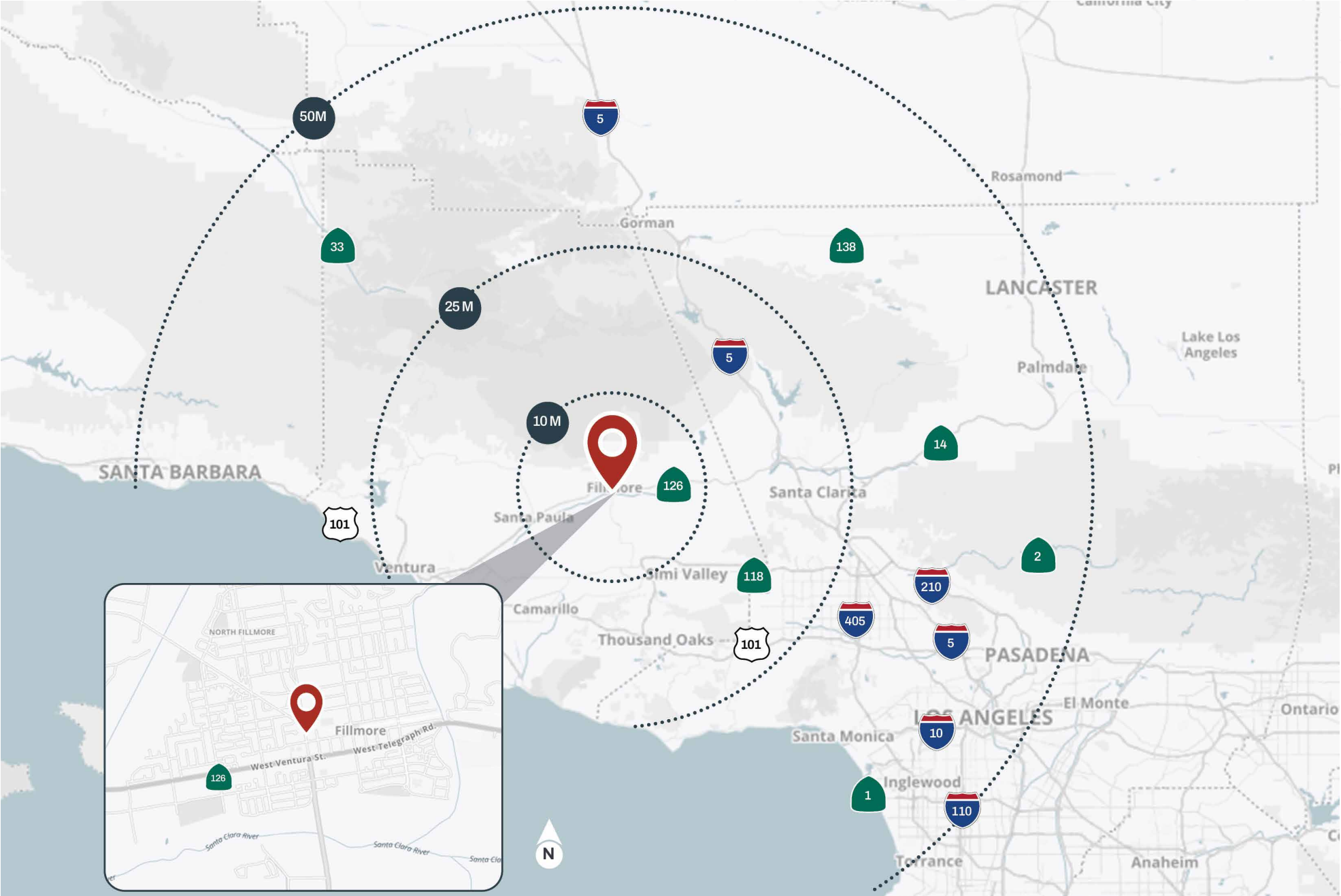


Property Photos





Proximity Map





310 A St.

Fillmore, CA 93015

Industrial Lot for Sublease Through December 31, 2029

Matt Ehrlich

Executive Vice President
818.933.2364 direct
mehrlich@naicapital.com
Cal DRE Lic #01936772

Sean Iezza

Associate
818.742.1620 direct
siezza@naicapital.com
Cal DRE Lic #02220089

NAI Capital Commercial

15821 Ventura Blvd., #320
Encino, CA 91436
818.905.2400
naicapital.com

No warranty, express or implied, is made as to the accuracy of the information contained herein. This information is submitted subject to errors, omissions, change of price, rental or other conditions, withdrawal without notice, and is subject to any special listing conditions imposed by our principals. Cooperating brokers, buyers, tenants and other parties who receive this document should not rely on it, but should use it as a starting point of analysis, and should independently confirm the accuracy of the information contained herein through a due diligence review of the books, records, files and documents that constitute reliable sources of the information described herein. NAI Capital Cal DRE #02130474

NAI Capital
COMMERCIAL REAL ESTATE SERVICES, WORLDWIDE