

11240
PLAYA
COURT
Culver City



FOR SALE

OWNER / USER OPPORTUNITY
CREATIVE COMPOUND | OFFICE | WAREHOUSE



11240 PLAYA COURT *Culver City*

Zacuto Group is pleased to bring to market a unique creative compound within an exclusive media district of Culver City.

Surrounded by acclaimed studios and buzzing companies, Playa Court is a hidden enclave in one of Los Angeles' most desirable locations.

LISTING TEAM



JAKE ZACUTO

Managing Director

310.469.9012

jake@zacutogroup.com

BRE #01377441

JACKIE LUBRANO

Senior Vice President

267.278.0443

jackie@zacutogroup.com

BRE #02024601

DETAILS

11240 PLAYA COURT
CULVER CITY
CALIFORNIA 90230

SALE PRICE
\$12,750,000

PPSF
\$879/SF

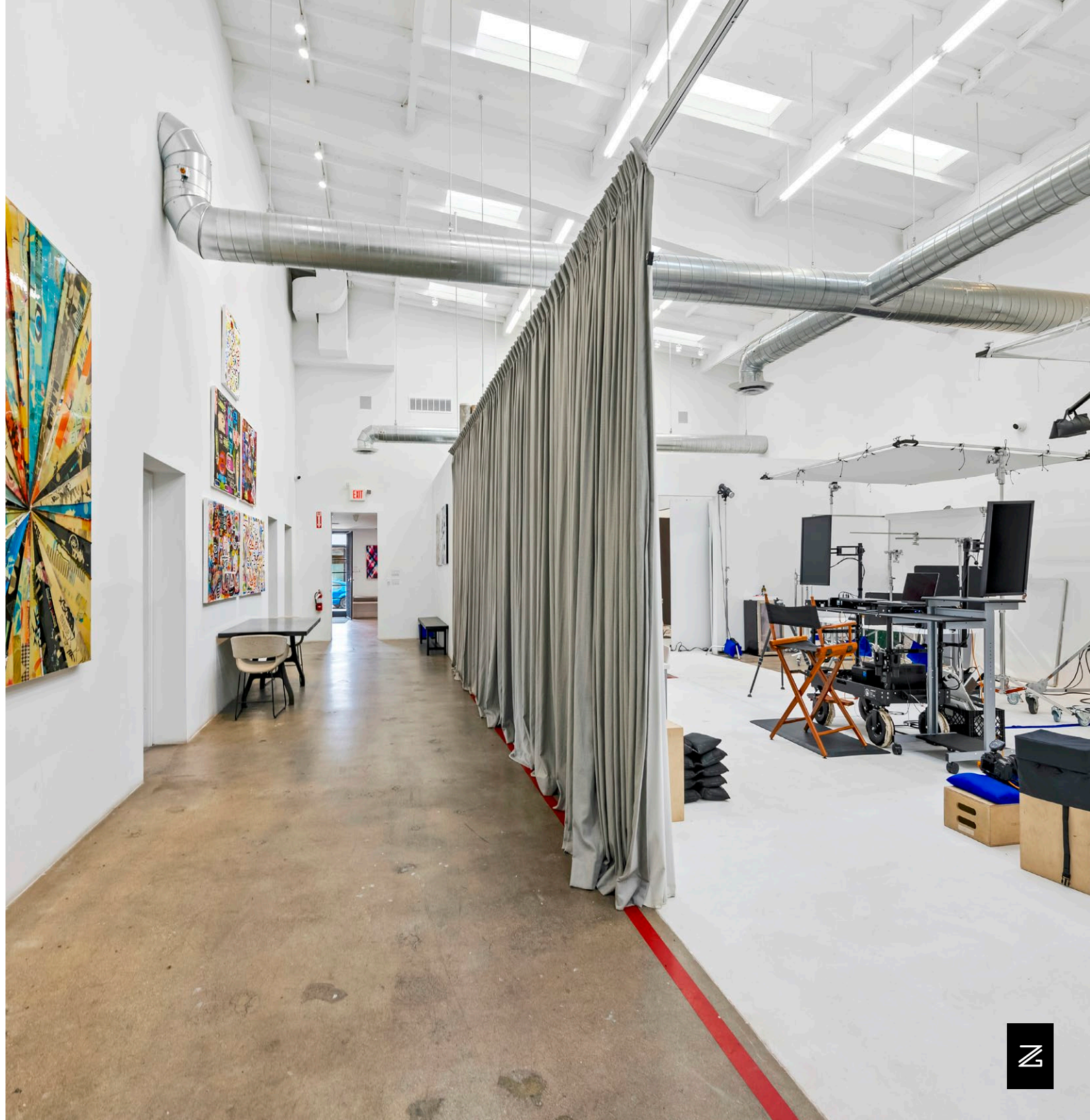
BUILDING SIZE
14,503 SF

LOT SIZE
23,522 SF

FULLY RENOVATED CREATIVE COMPOUND

Big and bright sun filled building with skylights. Property offers a mix of private offices, reception /lobby, conference rooms, full kitchen, open spaces and a back warehouse.

Flexible layout for multiple configurations and uses



DETAILS

PARKING

Gated lot + abundant street

POWER

1200AMP, 480 V, 3 phase

CEILING HEIGHT

12 - 20ft

OUTDOOR AMENITIES

Expansive garden & paved spaces

PRIVATE PARKING

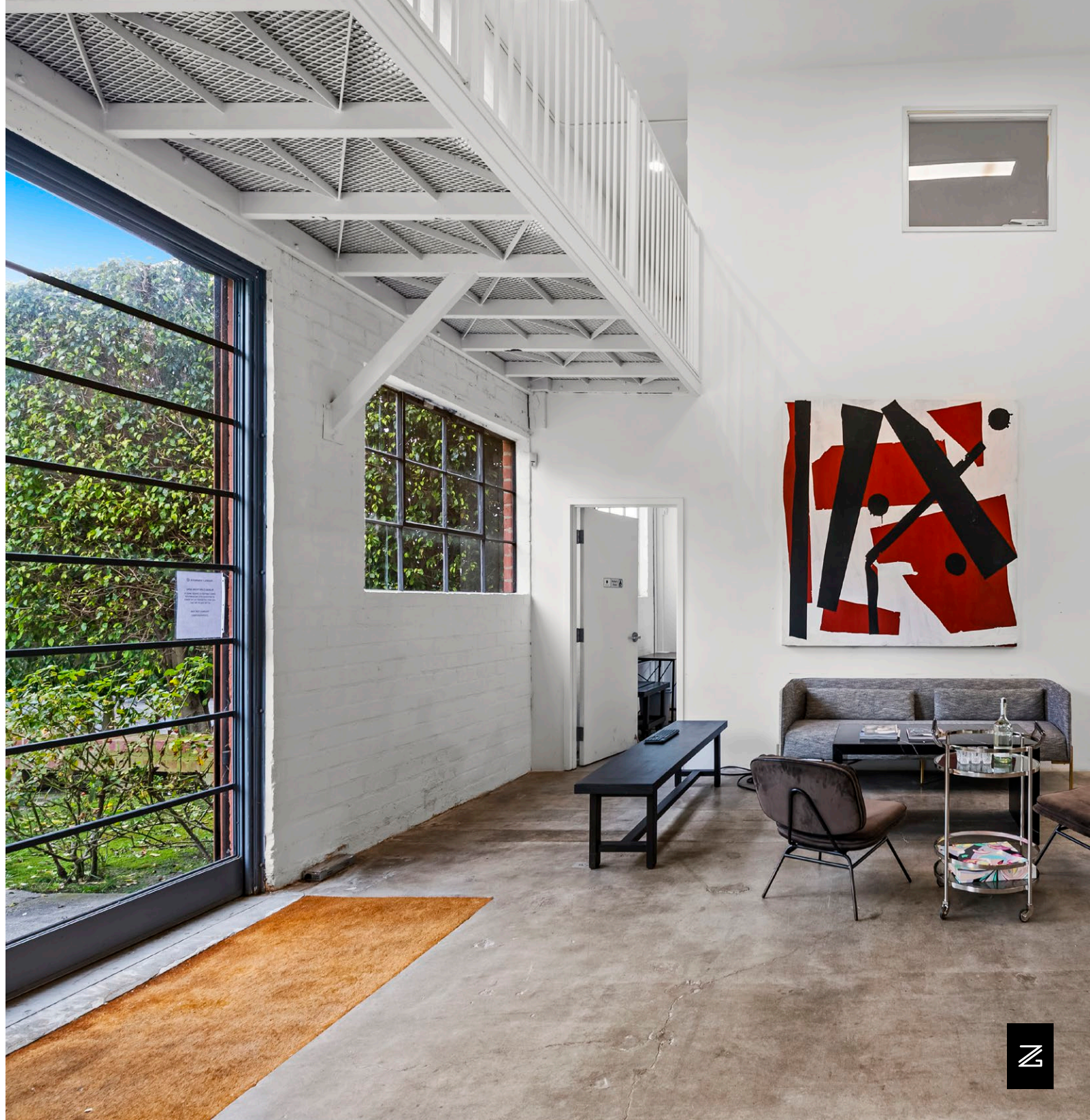
On-site gated parking for up to 8 cars + abundant street parking and striped spaces in front of the property

MODERN + FUNCTIONAL

Built in 1965, and renovated in 2021 with new roof, 3 HVAC units, and upgraded lighting systems.

IN GOOD COMPANY

The low profile brick building sits along an exclusive corridor neighboring Sony Studios and Tiktok HQ



FOR SALE

LAX

TikTok

SONY PICTURES COSTUME DEPT

PUNCH STUDIOS

11240
PLAYA
COURT
Culver City

PLAYA STUDIOS

JAMM

BEYOND YOGA



FLOOR PLAN

11240 PLAYA COURT, CULVER CITY, CALIFORNIA

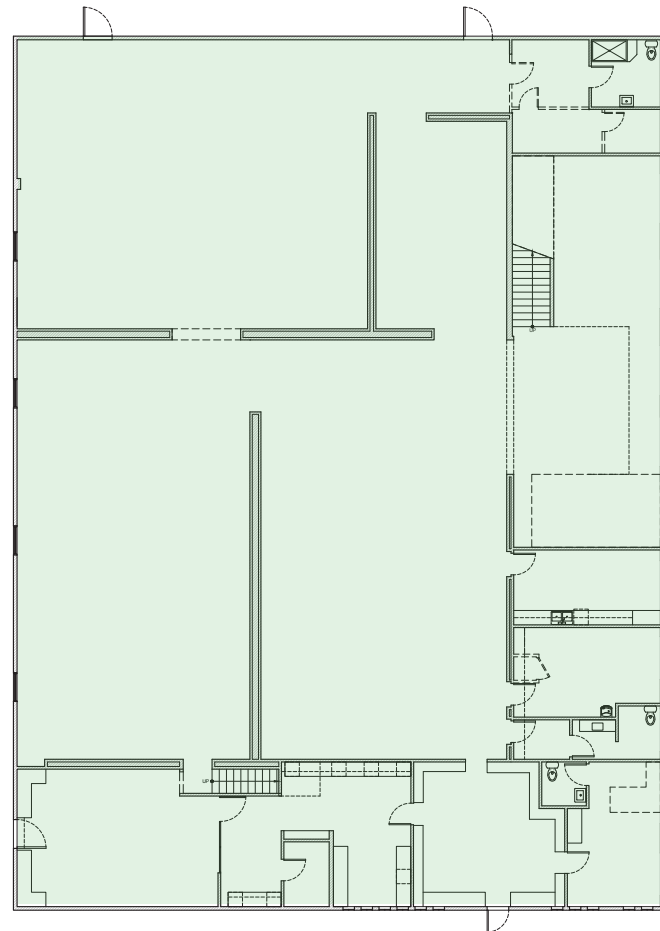
TOTAL SF: 14,503 SF

GROUND FLOOR:

11,011 SF

2ND FLR + MEZZANINE:

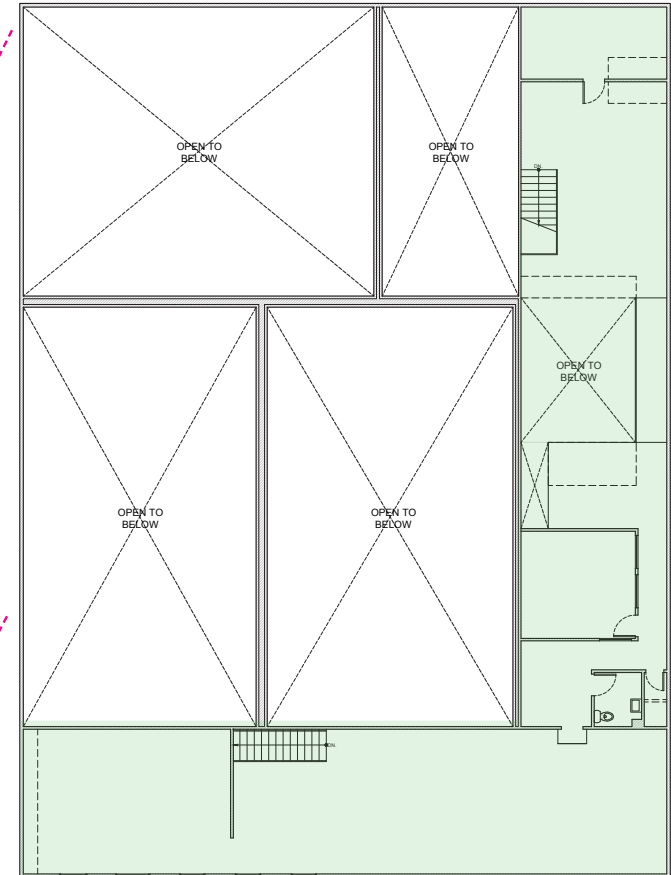
3,492 SF



100 FT
PLAYA COURT

GROUND FLOOR

11,011 SF



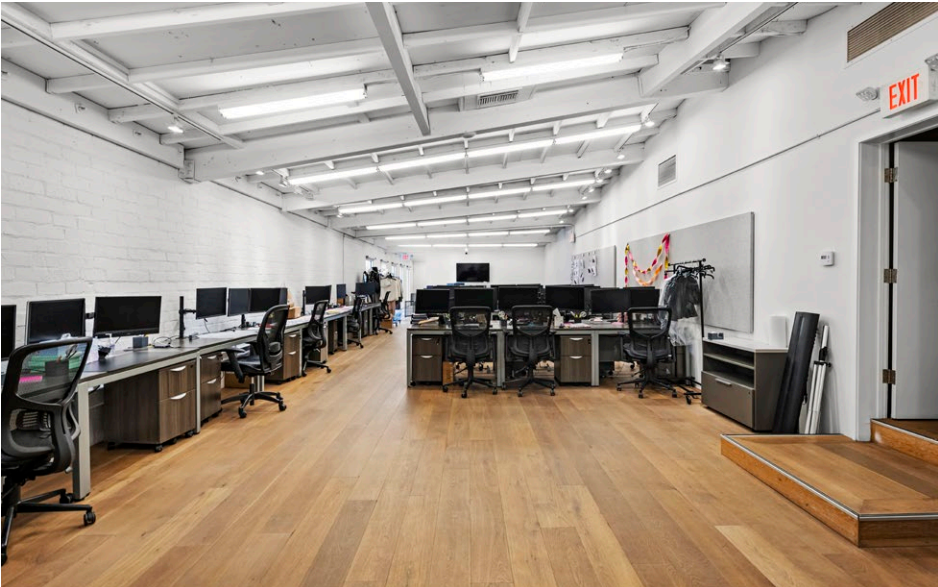
2ND FLOOR / MEZZANINE

3,492 SF



FOR SALE

11240 PLAYA COURT, CULVER CITY, CALIFORNIA



FOR SALE

11240 PLAYA COURT, CULVER CITY, CALIFORNIA



FOR SALE

11240 PLAYA COURT, CULVER CITY, CALIFORNIA



NEIGHBORHOOD AMENITIES

11240 PLAYA COURT, CULVER CITY, CALIFORNIA



📍 JON & VINNYS SLAUSON



📍 WESTFIELD CULVER CITY



📍 BLUE BOTTLE COFFEE



📍 TOCAYA ORGANIC

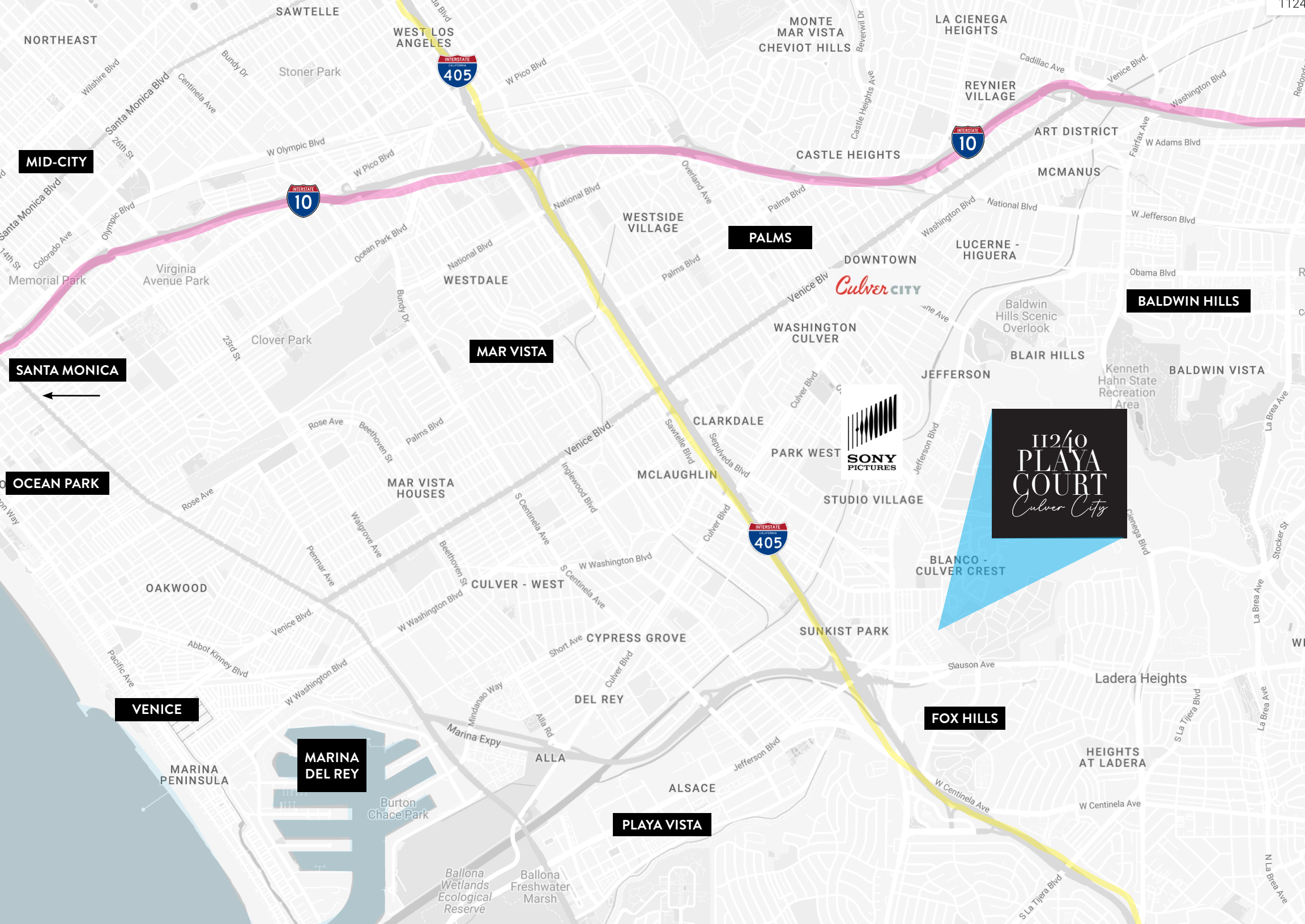


📍 HOWARD HUGHES ENTERTAINMENT



📍 TRADER JOES





NORTHEAST

MID-CITY

SANTA MONICA

OCEAN PARK

VENICE

MARINA DEL REY

PLAYA VISTA

FOX HILLS

11240
PLAYA
COURT
Culver City

MAR VISTA

PALMS

BALDWIN HILLS

SAWTELLE

WEST LOS ANGELES

MONTE MAR VISTA
CHEVIOT HILLS

LA CIENEGA HEIGHTS

REYNIER VILLAGE

ART DISTRICT

MCMANUS

LUCERNE - HIGUERA

DOWNTOWN

WASHINGTON CULVER

CLARKDALE

PARK WEST

STUDIO VILLAGE

SUNKIST PARK

BLANCO - CULVER CREST

Ladera Heights

HEIGHTS AT LADERA

DEL REY

CYPRESS GROVE

CULVER - WEST

MAR VISTA HOUSES

MCLAUGHLIN

WESTSIDE VILLAGE

WESTDALE

OAKWOOD

MARINA PENINSULA

Burton Chace Park

Ballona Wetlands Ecological Reserve
Ballona Freshwater Marsh

Culver CITY



11240
PLAYA
COURT
Culver City



JAKE ZACUTO

Managing Director

310.469.9012

jake@zacutogroup.com

BRE #01377441

JACKIE LUBRANO

Senior Vice President

267.278.0443

jackie@zacutogroup.com

BRE #02024601

No warranty, express or implied, is made as to the accuracy of the information contained herein. This information is submitted subject to errors, omissions, change of price, rental or other conditions, withdrawal without notice. All parties who receive this material should not rely on it, but should use it as a starting point of analysis, and should independently confirm the accuracy of the information contained herein through a due diligence review of the books, records, files and documents that constitute reliable sources of the information described herein. Logos and images are for identification purposes only and may be trademarks of their respective companies. All terms provided are approximate. Parties to verify. 1/2025

ZACUTOGROUP.COM | 310.469.9300

