

RE/MAX
COMMERCIAL®



THE DEMARCO
REAL ESTATE GROUP



FOR LEASE

INDUSTRIAL BUILDING

2012 N DIXIE HWY

HOLLYWOOD, FL 33020

FOR LEASE:

2012 N DIXIE HWY
HOLLYWOOD, FL

PRICE: \$7,000/MO NNN + \$1,000/MO CAM

PROPERTY OVERVIEW:

This freestanding industrial warehouse property encompasses 2,106 square feet of functional space within a 7,086 square-foot lot. Positioned directly on North Dixie Highway in East Hollywood, it is conveniently situated four blocks south of Sheridan Street. The property falls under the liberal DH-3 zoning, accommodating a wide range of commercial uses. Its perfect for most industrial uses.

PROPERTY HIGHLIGHTS:

- Freestanding Industrial Warehouse
- A++ Location in Hollywood, FL
- Building Size: 2,106 SF
- Lot Size: 7,086 SF
- Direct Frontage on Dixie Hwy
- Liberal DH-3 Zoning
- Great Visibility
- Perfect for most industrial uses!

THE DEMARCO REAL ESTATE GROUP™

Office: (954) 453-1000

john@demarcogroup.com

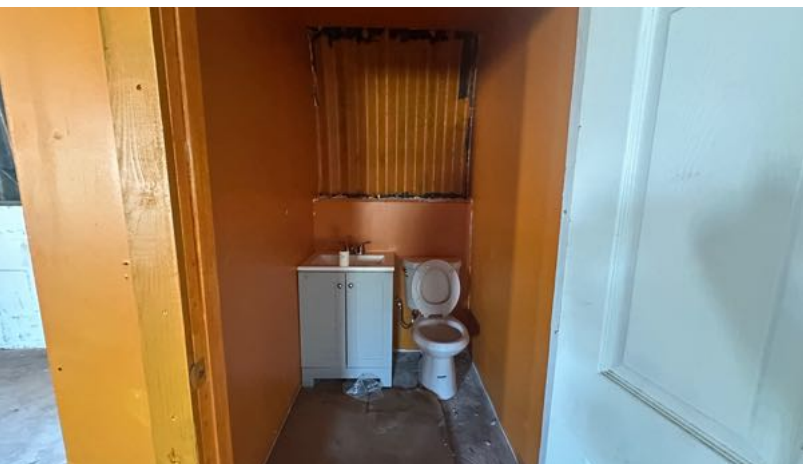
www.DeMarcoGroup.com

1901 Harrison Street, Hollywood FL, 33020



PICTURES:

2012 N DIXIE HWY
HOLLYWOOD, FL



THE DEMARCO REAL ESTATE GROUP™

Office: (954) 453-1000

john@demarcogroup.com

www.DeMarcoGroup.com

1901 Harrison Street, Hollywood FL, 33020



AERIAL:

2012 N DIXIE HWY
HOLLYWOOD, FL



THE DEMARCO REAL ESTATE GROUP™

Office: (954) 453-1000

john@demarcogroup.com

www.DeMarcoGroup.com

1901 Harrison Street, Hollywood FL, 33020



THE DEMARCO[®]
REAL ESTATE GROUP