



WAREHOUSE SPACE NEAR HAWKS PRAIRIE INDUSTRIAL PARKS



8410 30TH AVE NE, LACEY, WA | HOGUM BAY WAREHOUSE

This versatile property offers a well-balanced combination of professional office space and warehouse capabilities—ideal for contractors, service businesses, and operations-focused teams. This property is designed to support both administrative and operational needs in one convenient location.

**Warehouse Features:**

- ▶ Two (2) 14' grade-level roll-up doors.
- ▶ Efficient layout for storage, distribution, or light industrial use.
- ▶ ±3,400 SF of yard space available (negotiable with lease).

**Office Features:**

- ▶ Five (5) private offices
- ▶ Welcoming reception area
- ▶ Spacious conference room
- ▶ Dedicated lunch/break area
- ▶ Restroom

±4,900 SF

\$1.28/SF/MO, NNN

OFFICE + WAREHOUSE

CBA# 44753465



[rants.group/841030thAveNESuiteC](https://rants.group/841030thAveNESuiteC)

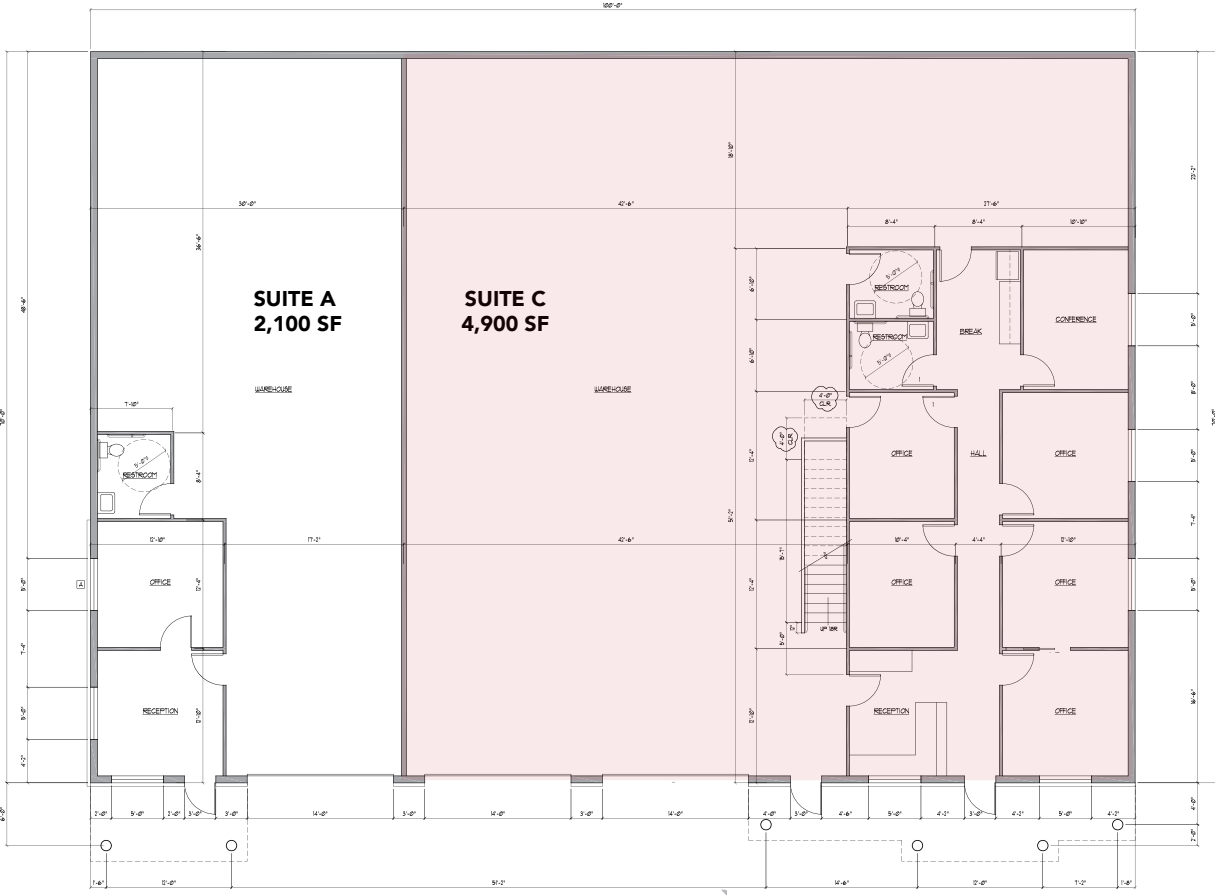
This information, while obtained from sources we deem reliable, is not guaranteed. It is provided without any representation, warranty or guarantee, expressed or implied as to its accuracy. Prospective buyer or tenant should conduct an independent investigation and verification of all matters deemed to be material, including, but not limited to, statements of income and expenses. Consult your attorney, accountant, or other professional advisor.



**Jami Topping**  
BROKER  
(360) 763-4995  
[jami@rantsgroup.com](mailto:jami@rantsgroup.com)

**360-943-8060**  
**RANTSGROUP.com**

8410 30TH AVE NE, LACEY, WA | HOGUM BAY WAREHOUSE



THIS FLOORPLAN IS NOT TO SCALE  
SIZES AND DIMENSIONS ARE APPROXIMATE, ACTUAL MAY VARY.



**CONTACT**

**Jami Topping**  
BROKER  
(360) 763-4995  
jami@rantsgroup.com



rantsgroup/841030thAveNESuiteC

This information, while obtained from sources we deem reliable, is not guaranteed. It is provided without any representation, warranty or guarantee, expressed or implied as to its accuracy. Prospective buyer or tenant should conduct an independent investigation and verification of all matters deemed to be material, including, but not limited to, statements of income and expenses. Consult your attorney, accountant, or other professional advisor.

360-943-8060 | RANTSGROUP.com

8410 30TH AVE NE, LACEY, WA | HOGUM BAY WAREHOUSE



WAREHOUSE WITH TWO 14' ROLLUP DOORS



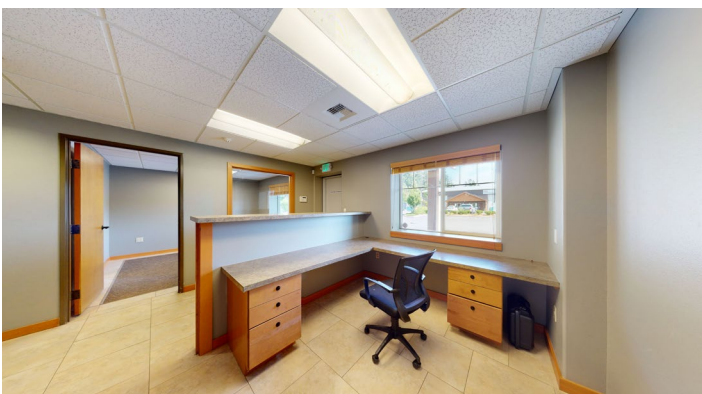
WAREHOUSE - FACING MEZZANINE



SUITE C ENTRY



YARD AVAILABLE



RECEPTION AREA



PRIVATE OFFICES

## CONTACT

**Jami Topping**  
BROKER  
(360) 763-4995  
jami@rantsgroup.com



rants.group/841030thAveNESuiteC

This information, while obtained from sources we deem reliable, is not guaranteed. It is provided without any representation, warranty or guarantee, expressed or implied as to its accuracy. Prospective buyer or tenant should conduct an independent investigation and verification of all matters deemed to be material, including, but not limited to, statements of income and expenses. Consult your attorney, accountant, or other professional advisor.

360-943-8060 | RANTSGROUP.com