



cresa

Sublease Available

Highly efficient ground floor character space sublease

1205 King Street West,
Toronto ON

Space Profile

Total Rentable Area	6,740 SF
Gross Rent	Call Agent to Discuss
Availability	Immediate
Term	January 30, 2025



Features

- Street facing signage and branding on King Street West
- Newly built-out, never occupied space
- Built to comfortably accommodate 60 + workstations
- High-end build out complete with polished concrete floors, exposed ceilings and ducting
- Cool private entrances on both King and Mowat
- Private washrooms
- 4 parking spaces and in-unit bike storage

For More Information

Cresa Toronto Inc., Brokerage

170 University Ave,
Suite 1100 Toronto,
ON M5H 3B3
cresa.com/toronto



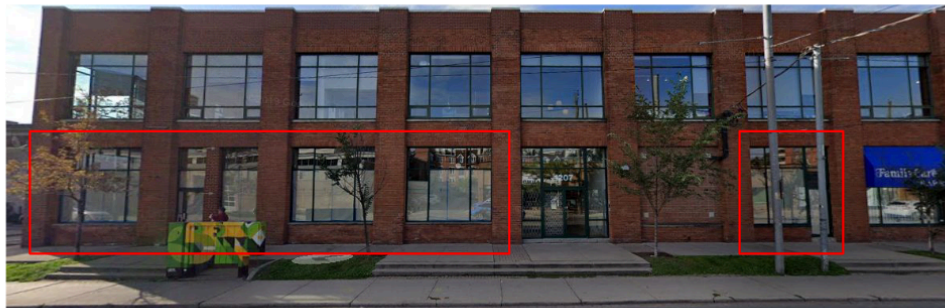
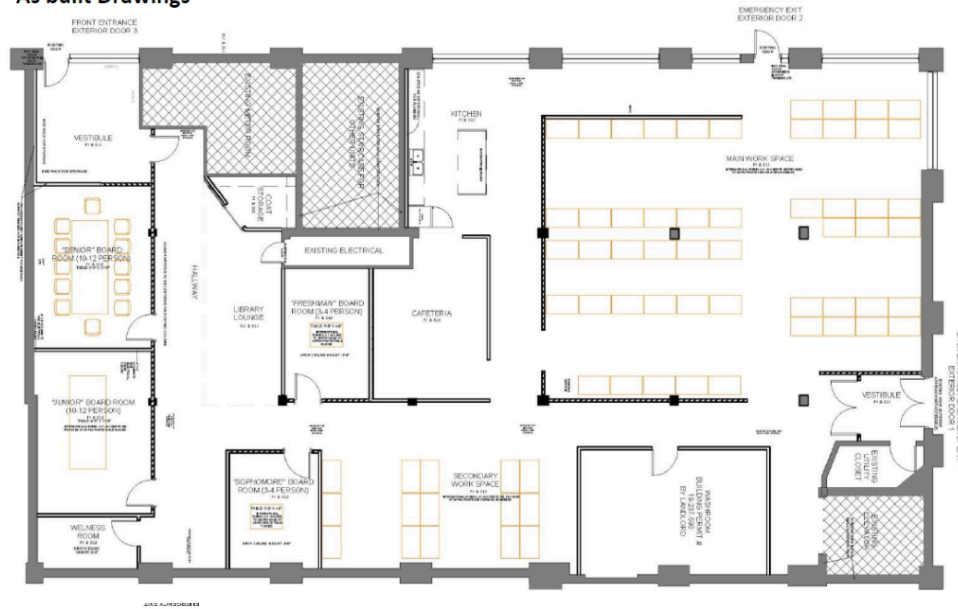
Mark Zettel MBA, CPA, CMA
Principal, Sales Representative
647.409.5212
mzettel@cresa.com



Andrew Chapman
Principal, Sales Representative
416.862.0659
achapman@cresa.com

Even though obtained from sources deemed reliable, no warranty or representation, express or implied, is made as to the accuracy of the information herein, and it is subject to errors, omissions, change of price, rental or other conditions, withdrawal without notice, and to any special listing conditions imposed by our principals.

Mowat – As built Drawings



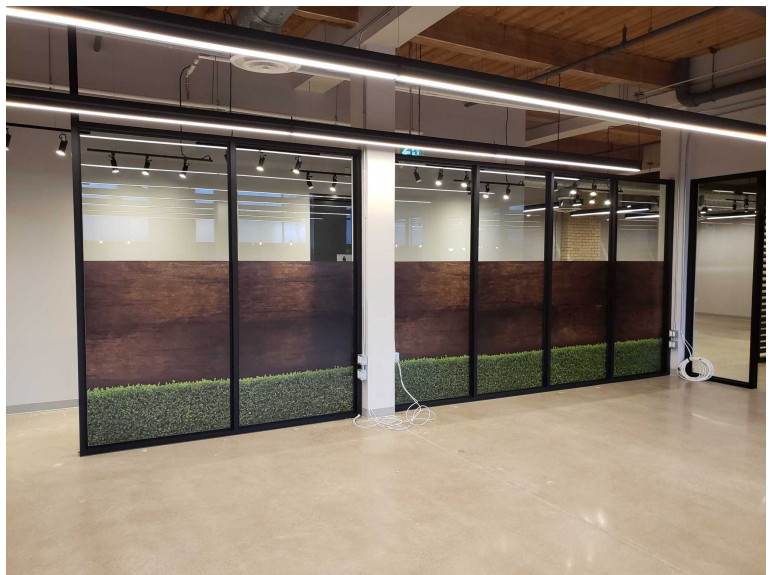
Mark Zettel MBA, CPA, CMA
Principal,
Sales Representative
647.409.5212
mzettel@cresa.com



Andrew Chapman
Principal, Sales Representative
416.862.0659
achapman@cresa.com



**1205 King Street West,
Toronto ON**



Mark Zettel MBA, CPA, CMA
Principal,
Sales Representative
647.409.5212
mzettel@cresa.com



Andrew Chapman
Principal, Sales Representative
416.862.0659
achapman@cresa.com



For More Information Cresa Toronto Inc., Brokerage - 170 University Ave, Suite 1100 - Toronto, ON - M5H 3B3 - cresa.com/toronto