

AVAILABLE FOR LEASE RETAIL OPPORTUNITIES

844 & 852 S. BROADWAY | LOS ANGELES, CA 90014

THE PASSMAN GROUP

REAL ESTATE BROKERAGE



The Passman Group
145 S. Fairfax Ave. Suite 200
Los Angeles, CA 90036
(310) 859-8100
info@thepassmangroup.com

David Passman
DRE#01795153

Darren Segal
DRE# 01367390

Ricky Mitchell
DRE# 02071069

The Passman Group, Inc. or its personnel makes no warranties, representations or guarantees about the information provided herein. These materials are based on information and content provided by others, which we believe are accurate, however, it has not been verified and all interested parties must independently confirm its accuracy. The information contained herein is subject to errors and omissions and is subject to change without notice. Any and all projections, opinions, assumptions, and estimates provided are for purposes of example and may not represent the current or future performance of this property. Your tax, financial, legal and toxic substance advisors should conduct a careful investigation of the property and its suitability for your needs, including land use limitations.

852 S. BROADWAY

PROPERTY DESCRIPTION

- Remarkably detailed building in “Historic Downtown” Los Angeles
- Perfect for retail and other opportunities
- Very close to Apple’s flagship Downtown LA location at the Tower Theatre



Square Footage (SF): ±1,500 SF of Ground Floor Retail Space



Asking Rent: Upon Request



Lease Type: Modified Gross



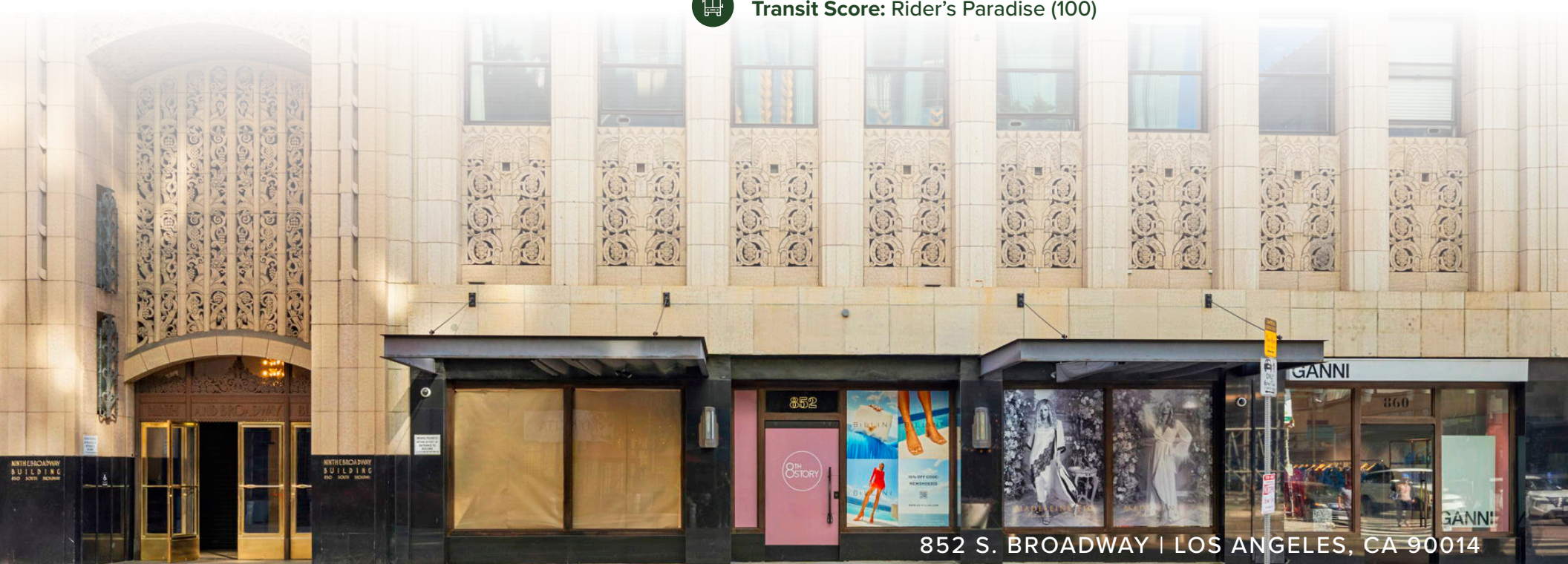
Parking: Not included; city parking and private pay lots within close proximity



Pedestrian Score: Pedestrian’s Paradise (97)



Transit Score: Rider’s Paradise (100)



852 S. BROADWAY | LOS ANGELES, CA 90014

844 S. BROADWAY

PROPERTY DESCRIPTION

- Outstanding retail space
- Incredible frontage on Broadway
- Immediately adjacent to the Orpheum Theatre
- Very close to Apple's flagship Downtown LA location at the Tower Theatre



Square Footage (SF): ±1,356 SF of Ground Floor Retail Space



Asking Rent: Upon Request



Lease Type: Modified Gross



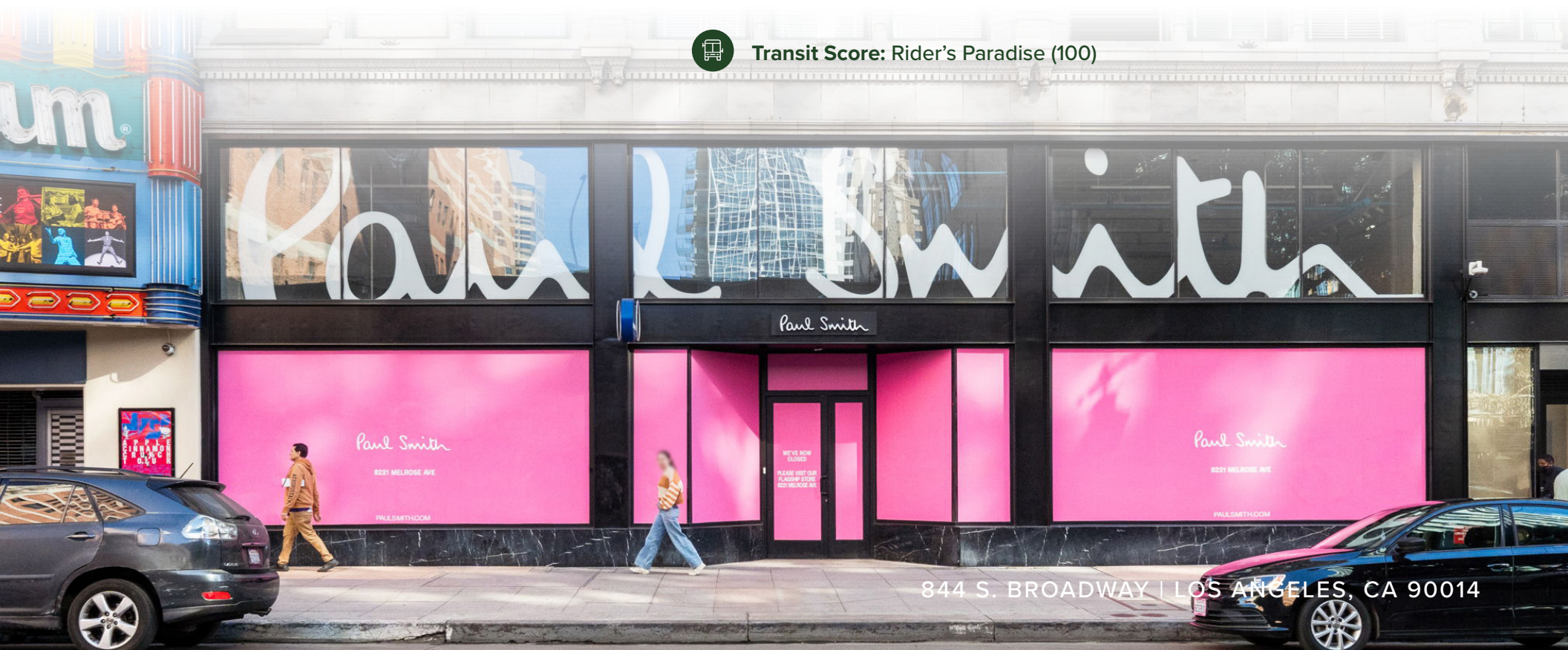
Parking: Not included; city parking and private pay lots within close proximity



Pedestrian Score: Pedestrian's Paradise (97)



Transit Score: Rider's Paradise (100)



844 S. BROADWAY | LOS ANGELES, CA 90014



THE PASSMAN GROUP

REAL ESTATE BROKERAGE

LOCATION HIGHLIGHTS

Situated amidst the vibrant landscape of Downtown Los Angeles, this area is a bustling hub for both luxury retail and residential living. Nestled near major retailers such as Apple, Gentle Monster, Urban Outfitters, Ganni, Aesop, West Elm and Whole Foods Market, alongside renowned eateries and cafes, it offers a dynamic blend of urban convenience and cultural richness. The iconic Eastern Columbia Building, a symbol of Art Deco architecture, stands majestically across the street, adding to the area's allure.

DINING SCENE

Within a stone's throw, residents and visitors alike can indulge in a plethora of restaurant options including LALA'S, Mona's Pasta Bar, Zinque, Amante Restaurant, Dune Downtown, Sonoratown, Bottega Louie, Shake Shack, il caffe', Blue Bottle, Starbucks, Verve Coffee, Hilltop Kitchen & Coffee and many more wonderful options...

CULTURAL LANDMARKS

Immersed in history and culture, this area boasts proximity to several iconic theaters, including the historic Orpheum Theatre. The rich heritage of Broadway resonates through these architectural gems, offering residents and visitors a glimpse into the city's illustrious past. Beyond theaters, nearby attractions like Crypto.com Arena and LA Live add a contemporary flair to the cultural tapestry of the neighborhood.

CONVENIENCE AND CONNECTIVITY

Access to major freeways such as the 10, 101, 110, and 5 enhances the accessibility of this prime location, ensuring seamless connectivity to various parts of the city and beyond. Additionally, the proximity to the Metro further facilitates ease of travel, offering residents and commuters convenient transit options. Whether traversing the bustling streets or venturing out of the city, the central location of Downtown Los Angeles ensures effortless navigation.

852 S. BROADWAY | LOS ANGELES, CA 90014

844 & 852 S. BROADWAY | LOS ANGELES, CA



To really appreciate this property, please schedule a private tour and then explore the S. Broadway, Historic Downtown, Shopping District and neighborhood.

The Passman Group
145 S. Fairfax Ave. Suite 200
Los Angeles, CA 90036
(310) 859-8100
info@thepassmangroup.com

David Passman
DRE#01795153

Darren Segal
DRE# 01367390

Ricky Mitchell
DRE# 02071069

The Passman Group, Inc. or its personnel makes no warranties, representations or guarantees about the information provided herein. These materials are based on information and content provided by others, which we believe are accurate, however, it has not been verified and all interested parties must independently confirm its accuracy. The information contained herein is subject to errors and omissions and is subject to change without notice. Any and all projections, opinions, assumptions, and estimates provided are for purposes of example and may not represent the current or future performance of this property. Your tax, financial, legal and toxic substance advisors should conduct a careful investigation of the property and its suitability for your needs, including land use limitations.