

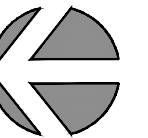
Area Analysis performed in accordance with ANSI/BOMA Z65.1 - 2017 Method A Standard.

Project: C21-1318

Date	Action
12/27/2021	Initial Site Measure
C21-1318	

Client:
Key Choice Comml Real Estate
6116 211th St SW Suite 203
Lynnwood, WA 98036

Site:
Office Building
210 Morris St
La Conner, WA 98257

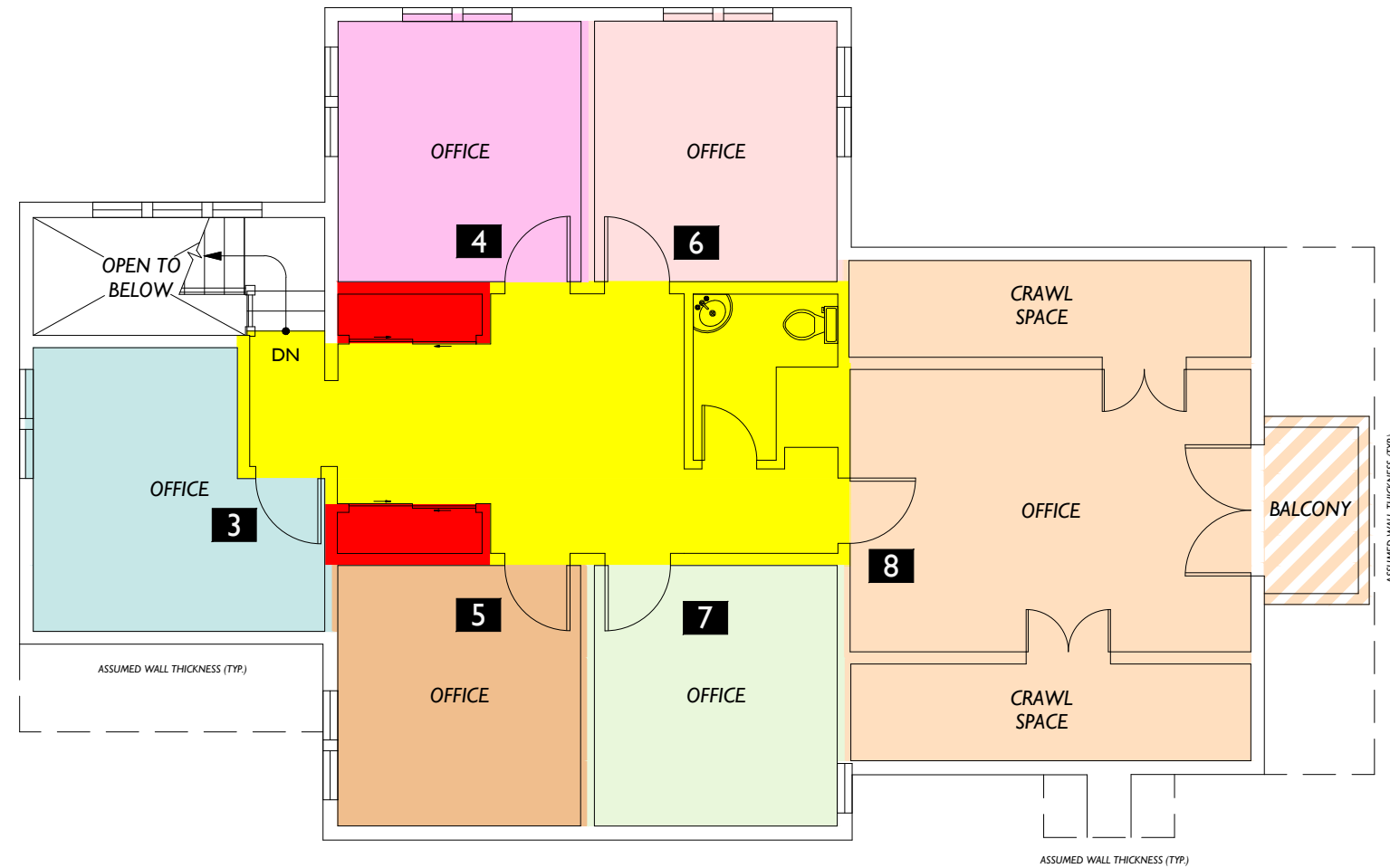


Lease Plan

2

Floor

Morris St



Floor Summary	SQ. FT.	Suite #	Occupant Area	Rentable Area
Total Rentable Area	2,168.20	Suite 3	153.60	281.98
Total Occupant Area	1,181.08	Suite 4	139.41	255.93
Load Factor	1.835777	Suite 5	138.63	254.49
		Suite 6	139.54	256.16
		Suite 7	140.47	257.87
		Suite 8*	469.43	861.78
Floor Service Area	299.17			
Building Service Area	41.89			

Area Analysis performed in accordance with ANSI/BOMA Z65.1 - 2017 Method A Standard.

*Area includes a Limited Headspace Area (186.79 sq. ft.)

