

For Lease

1701 Trinity St
Los Angeles, CA 90015

±10,800 SF Warehouse



For more information, please contact:

Daniel Park

(213) 446-0396

Danielpark777@hotmail.com

DRE# 01227056

PARK INDUSTRIAL

SPECIALIZING IN INDUSTRIAL REAL ESTATE SERVICES

Park Industrial Realty
800 McGarry St, 5th Floor
Los Angeles, CA 90021
Corporation DRE# 01983713

Property Information

1701 Trinity St, Los Angeles, CA 90015

Building SF: 10,800 SF

Office SF: 1,000 SF

Year Built: 1965

Construction: Concrete

Clear Height: 12' – 14'

Power: 400a, 240v, 1p

Loading: 1 GL

Parking: 6

Zoning: M2

Lease Rate/Mo: \$10,692 (\$0.99/SF) Gross

- Excellent Downtown LA location close to Fashion District
- Secure fenced & gated parking for 6 cars
- Sprinklered
- 12' to 14' clear height
- Ground level loading
- Clean office area of app. 1,000 SF
- Convenient location close to Freeway 10

All information has been furnished from sources which we deem reliable, but for which we assume no liability. All measurements are approximate. Broker/Owner do not warrant its accuracy. Buyer/Lessee must verify all information.

Plat Map

5127 20
SCALE 1" = 80'

1996

11-25-64
4-28-65
4-19-66

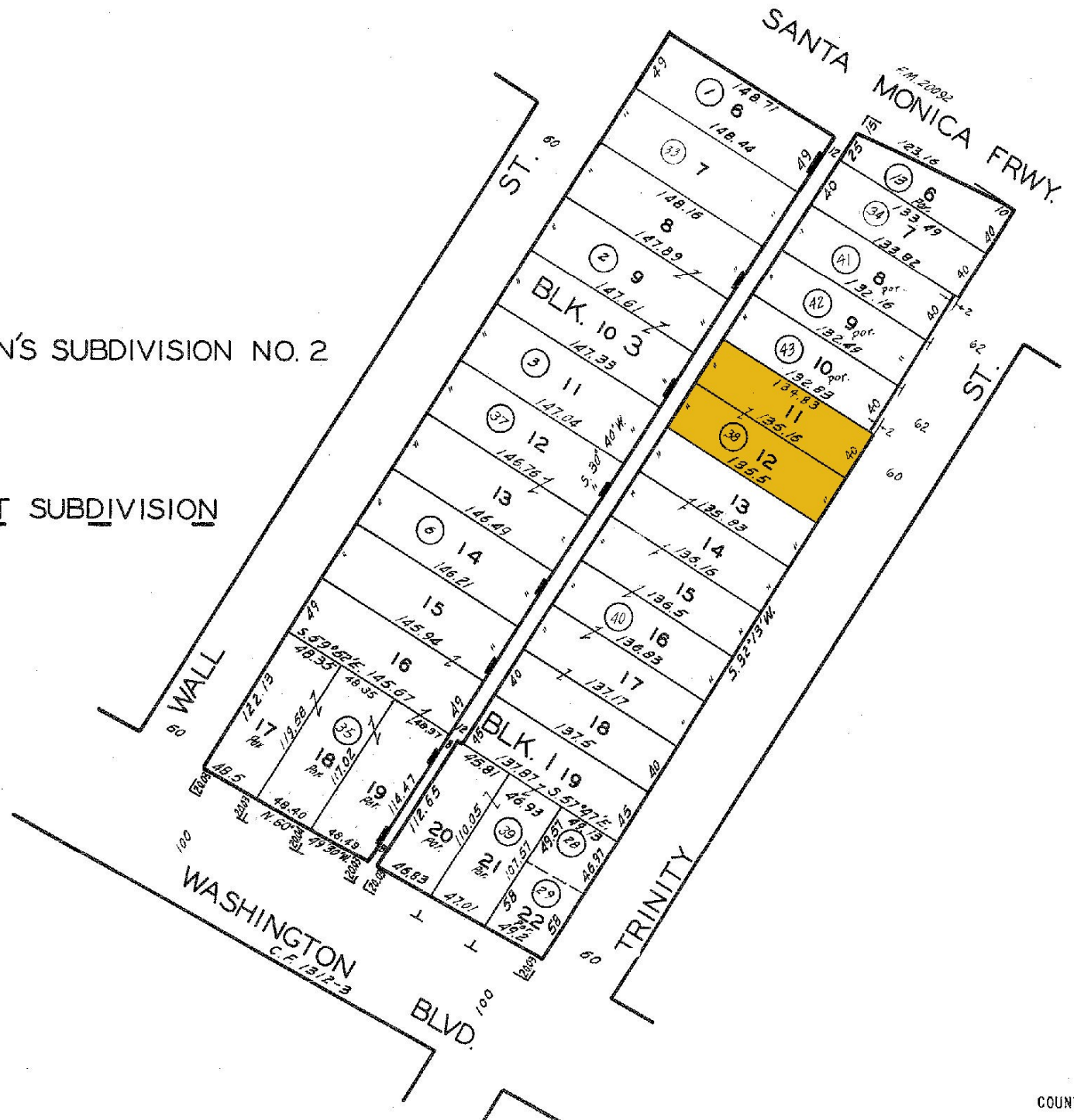
STRONG AND DICKINSON'S SUBDIVISION NO. 2
M.B. 1-55

HELLMAN'S 16TH STREET SUBDIVISION
M.R. 72-69



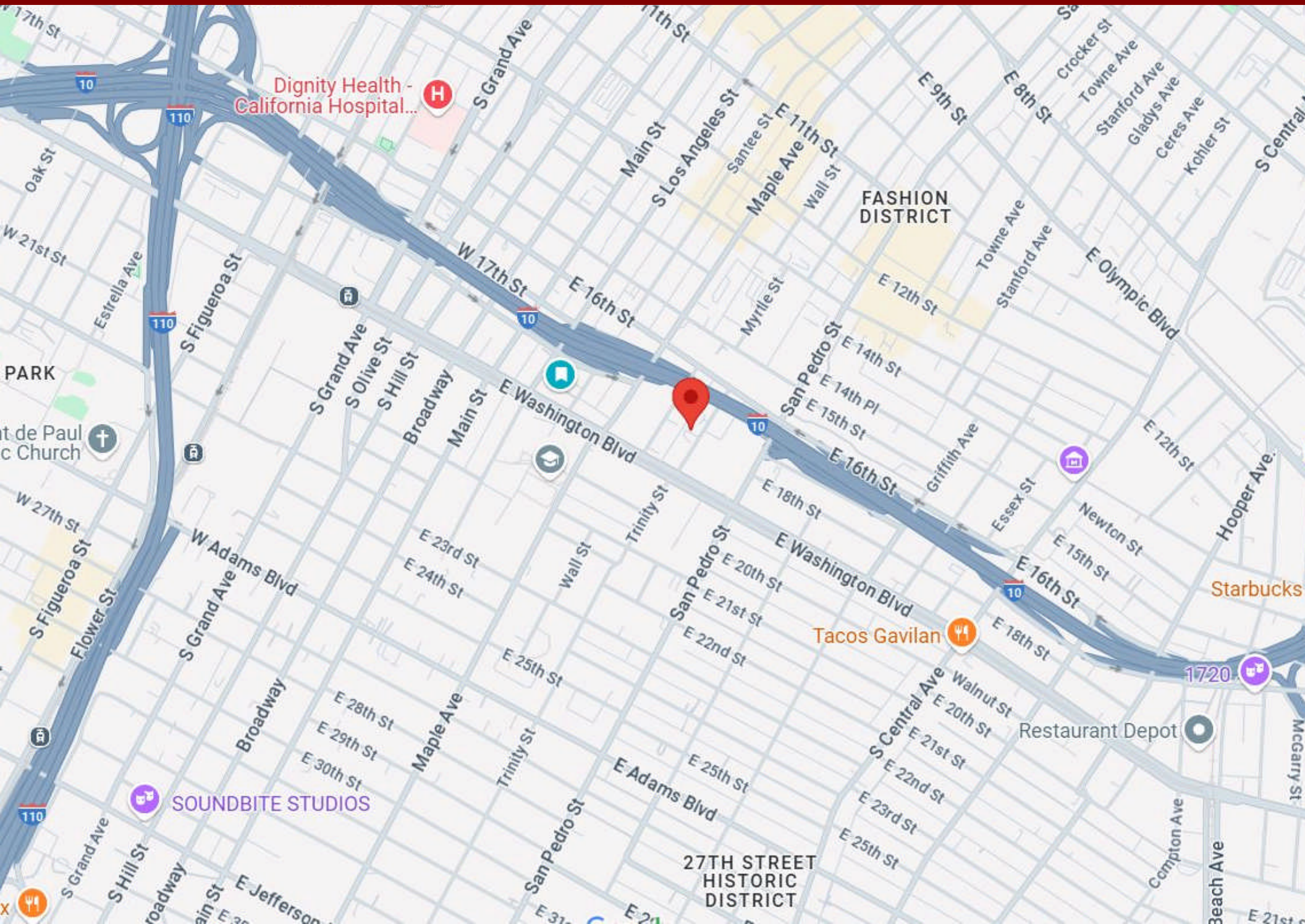
CODE
6658

FOR PREV. ASSM'T. SEE: 26-36 & 41



ASSESSOR'S
COUNTY OF LOS AN

Area Map



Property Photo



Property Photo

