

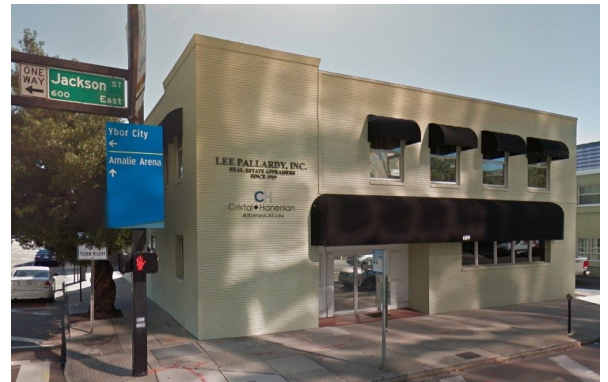
609 E Jackson Street Tampa, FL 33602



**2,500 SF OFFICE
FOR LEASE
DOWNTOWN TAMPA**



- Size: 2,500 Square Feet Available for Office use on ground floor.
- Great layout with a nice mix of office sizes, private restrooms, conference room and reception area.
- Excellent visibility on Jackson and Pierce and on site parking available with additional parking across street at Pierce St. Garage.
- Easy access to HART Public Transit, I-275, Kennedy Blvd. and Selmon Expressway.
- Within blocks of Hills. County Courthouse, Banks, Restaurants, and Tampa Riverwalk.



2017 Demographics

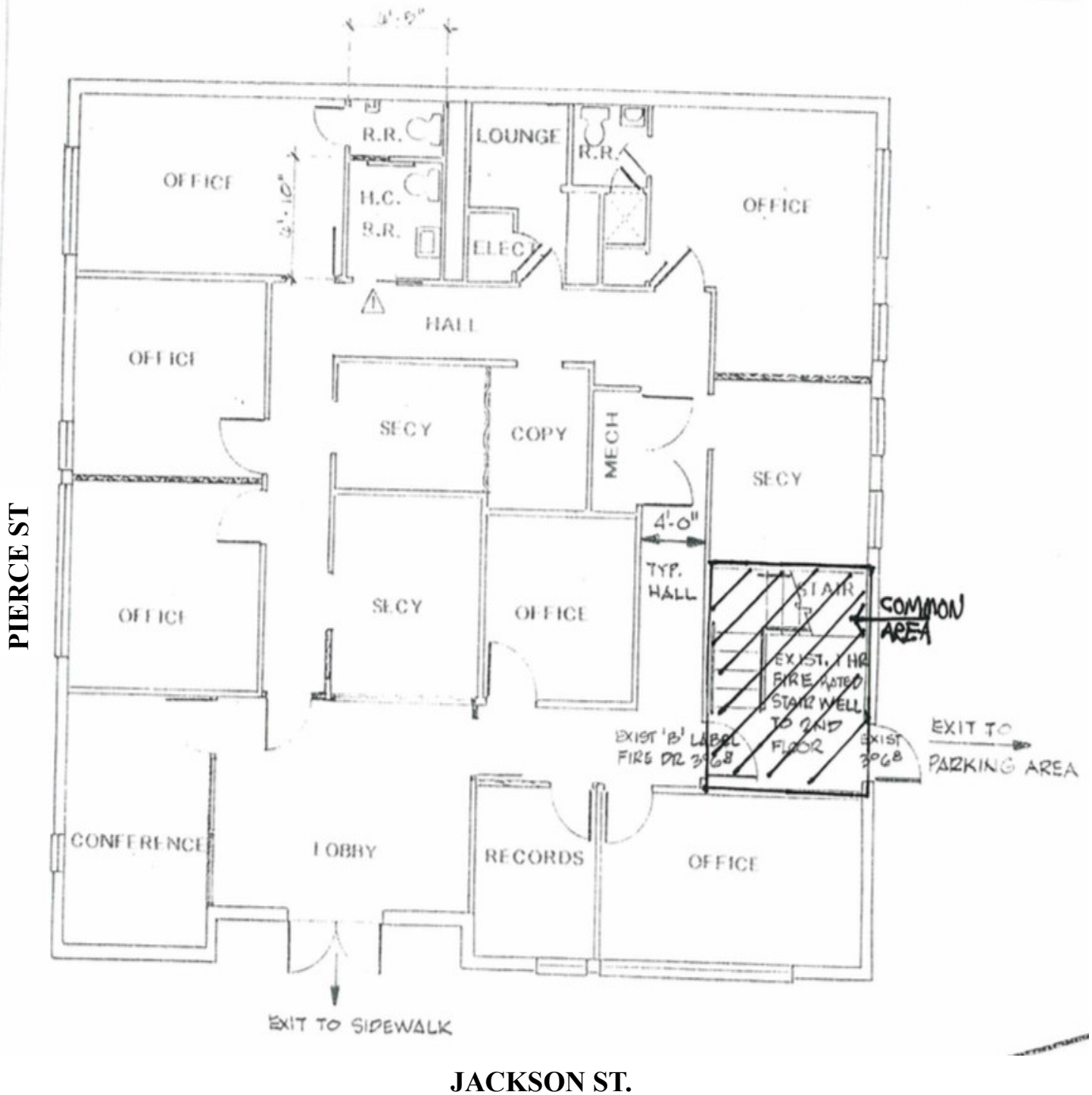
	<u>1 Mile</u>	<u>3 Miles</u>	<u>5 Miles</u>
Population	18,106	103,252	229,663
Avg. HH Income	\$97,543	\$77,796	\$76,543
Households	9,009	45,443	97,699
Employment	56,217	101,534	206,458

CONTACT:
Michael Palori, Licensed Real Estate Associate
Mobile: (813) 300-0303
E-mail: Michael@Palori.com



234 East Davis Blvd.
Tampa, FL 33606
(813) 253-5353 Phone
(813) 258-3800 Fax
<http://palori.com/>

FLOOR PLAN

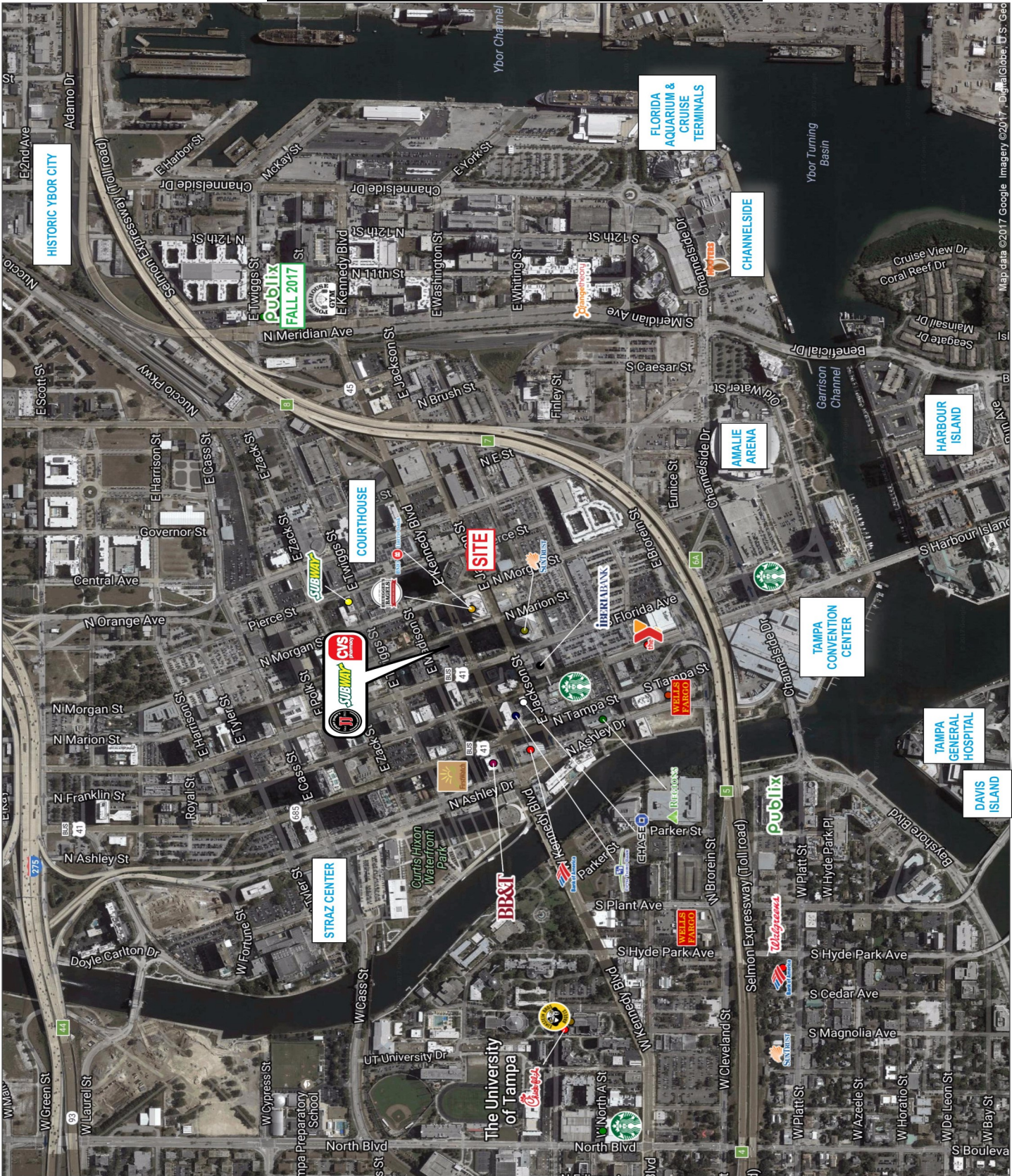


- 2,500 SF AVAILABLE ON GROUND FLOOR
- 51' FRONTAGE ON JACKSON STREET - (9,000 Vehicles Per Day)
- 50' FRONTAGE ON PIERCE STREET - (5,000 Vehicles Per Day)



**609 E. JACKSON ST.
TAMPA, FL 33602**

DOWNTOWN AERIAL MAP



Map data ©2017 Google Imagery ©2017 DigitalGlobe, U.S. Geo



**609 E. JACKSON ST.
TAMPA, FL 33602**