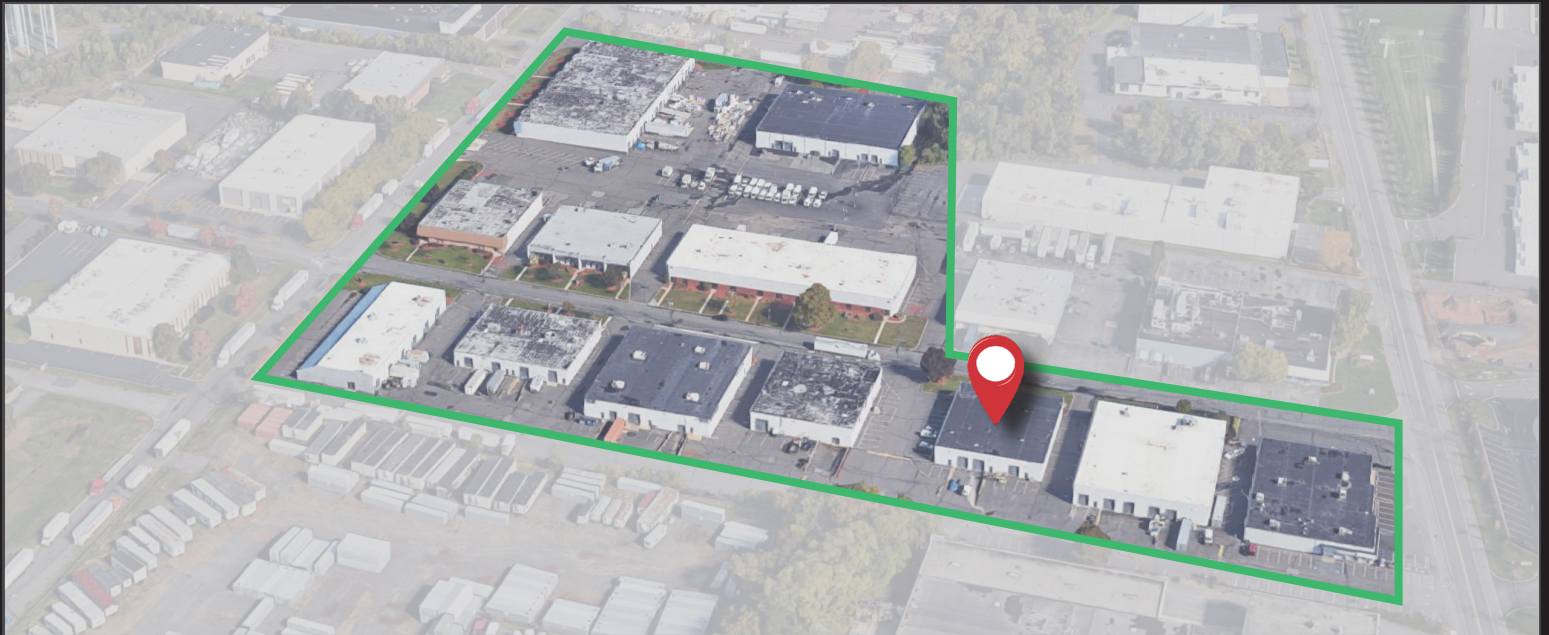


# FOR LEASE

# 12,000 SF INDUSTRIAL UNIT



## 6 Jules Lane New Brunswick, NJ



FOR ADDITIONAL INFORMATION, PLEASE CONTACT:

**Lorenzo Lambiase, MBA, CCIM**  
Vice President  
201 488 5800 x176  
llambiase@naihanson.com






**Patrick Lennon**  
Senior Vice President  
201 488 5800 x109  
plennon@naihanson.com

**Kenneth D. Lundberg, SIOR**  
Senior Vice President  
201 488 5800 x138  
klundberg@naihanson.com

**A PROJECT BY:**

**BRISTOL GROUP**

**NAI James E. Hanson**  
COMMERCIAL REAL ESTATE SERVICES, WORLDWIDE

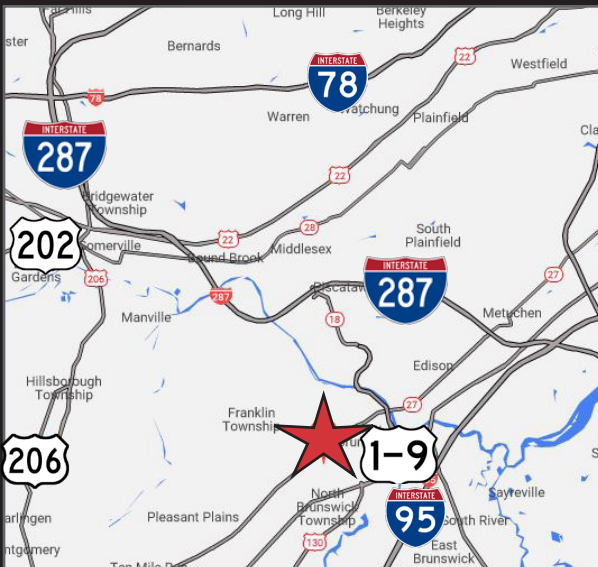
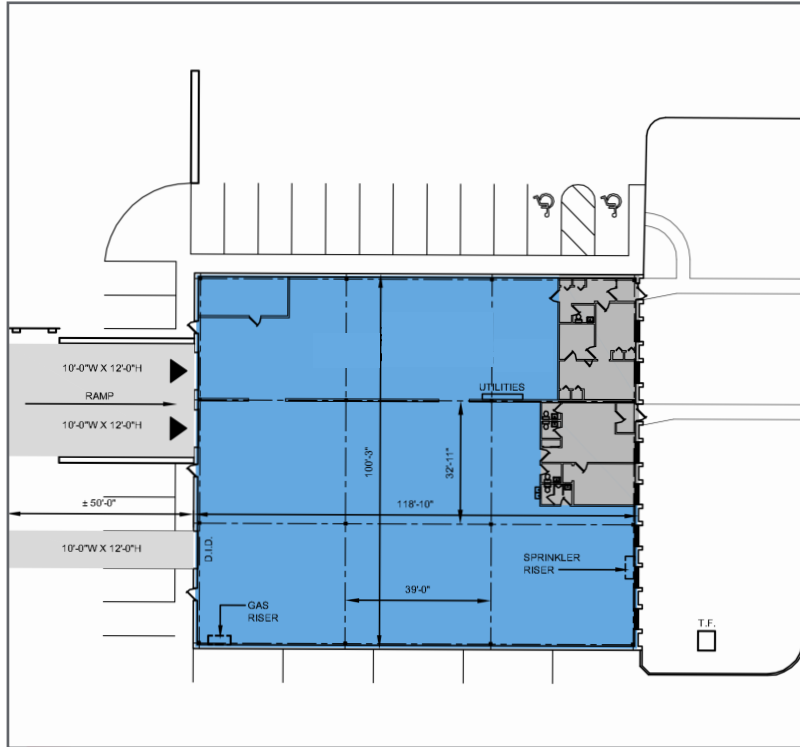
FOLLOW US!      | NJ Offices: Teterboro | Parsippany | [naihanson.com](http://naihanson.com) | Member of NAI Global with 300 Offices Worldwide

SERVICES OFFERED

Brokerage • Property Management • Corporate Services • Financing • Logistics • Government Services • Healthcare • Tenant Representation • Cold Storage • Investment Services

The information contained herein has been obtained from sources considered to be reliable, but no guarantee of its accuracy is made by NAI James E. Hanson

# FOR LEASE



## PROPERTY FEATURES

- Available: 12,000 SF | Unit A
- Building Size: 12,000 SF
- Office Space: 1,450 SF
- Two (2) Tailgates
- One (1) Drive-in
- 16' Ceiling Height
- NNN Lease
- Easy Access to Routes 1, 18 and the NJ Turnpike

FOR ADDITIONAL INFORMATION, PLEASE CONTACT:

**Lorenzo Lambiase, MBA, CCIM**  
Vice President  
201 488 5800 x176  
llambiase@naihanson.com

**Patrick Lennon**  
Senior Vice President  
201 488 5800 x109  
plennon@naihanson.com

**Kenneth D. Lundberg, SIOR**  
Senior Vice President  
201 488 5800 x138  
klundberg@naihanson.com

**A PROJECT BY:**

**BRISTOL GROUP**

**NAI James E. Hanson**  
COMMERCIAL REAL ESTATE SERVICES, WORLDWIDE