



LEASE PRICE: \$21,000/ MONTH

Strategic Location

- Located in the bustling Allapattah neighborhood, fronting NW 27 Ave.
- Daily Vehicle Count: 30,000 cars – prime exposure for your business.
- Easy Access to Major Highways: Convenient access to SR 112, 836, and Palmetto Expressway (826).

3700 NW 27 AVE MIAMI, FL 33142

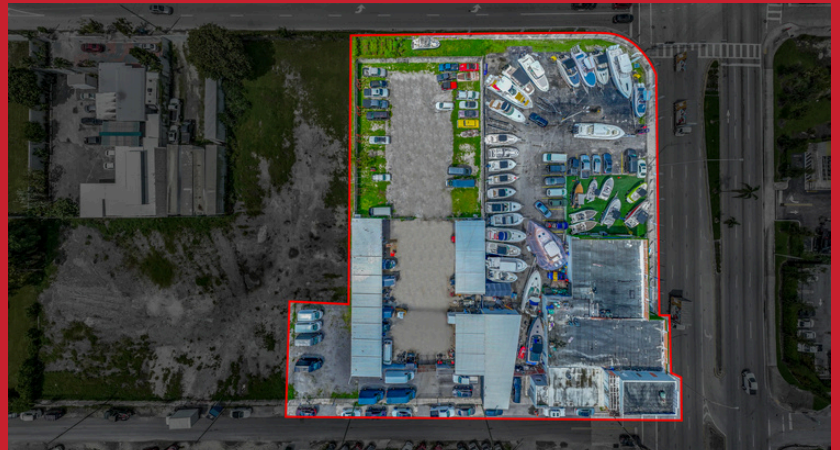
**TURNKEY AUTOMOTIVE REPAIR
FACILITY – COMMERCIAL ZONED**

PROPERTY HIGHLIGHTS

- 18 Drive-In Bays: Fully equipped and ready for high-volume service.
- 2 Car Lifts & 1 Frame Machine: Perfect for automotive repairs and bodywork.
- 3 Air Compressors: Ready to handle a range of auto services.
- Secured Concrete Wall: Ensuring a safe and private work environment.
- 15 Parking Spaces: Convenient for customers and staff.
- LED Exterior Perimeter Lighting: Enhanced security and visibility at night.
- Lot Size: 27,000 SF, providing ample space for operations.
- 800 SF Showroom: Modern and spacious, ideal for customer interaction.
- 4-6 Offices: Comfortable and functional workspaces for staff.

A Perfect Opportunity for Auto Repair or Service Expansion!

Whether you're looking to expand your business or start a new venture, this turnkey facility is equipped and ready to meet your needs. The high-traffic location ensures great visibility and accessibility, while the fully paved lot and secure infrastructure make this a top choice for automotive services.



YUNIEL DE VARONA
C: 786.222.1373
E: YV@FAUSTOCOMMERCIAL.COM

MARKOS BERTOLOTTI
C: 305.632.2057
E: MB@FAUSTOCOMMERCIAL.COM



VISIT FAUSTOCOMMERCIAL.COM
1761 W FLAGLER ST, MIAMI, 33135