

33341 Dequindre Rd

Troy, MI

9,000 Square Feet Available For Lease



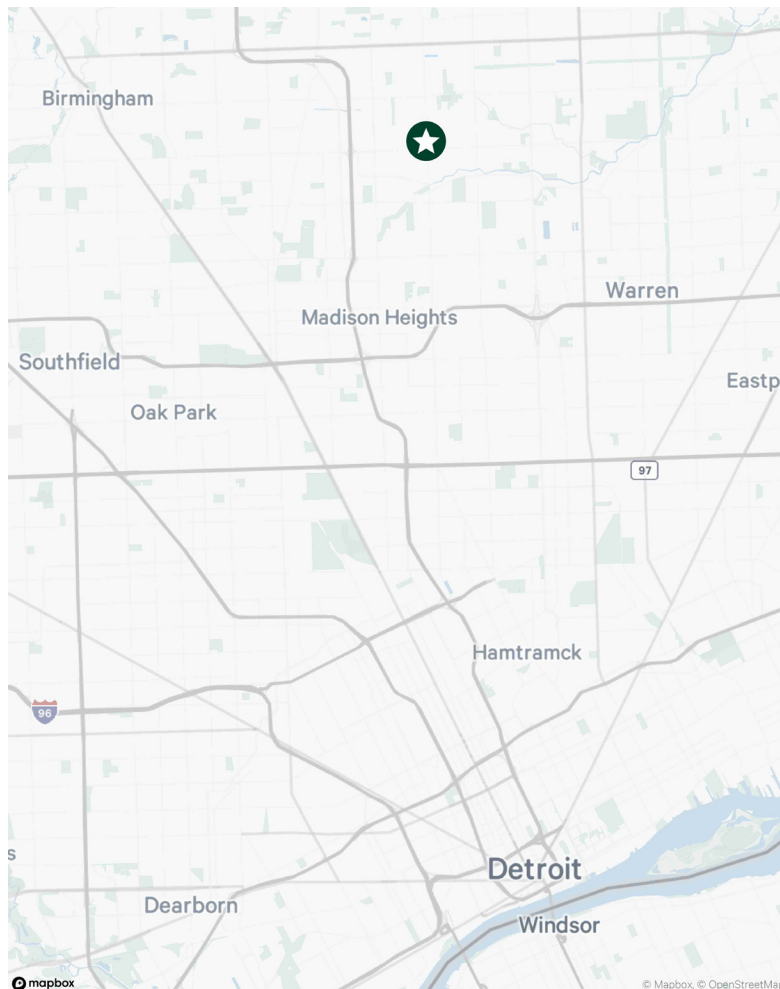
33341 Dequindre Rd

Troy, MI

For Lease

Property Features

- + 33341 (Back Building)
 - ± 9,000 SF
 - ± 500 SF Office
 - ± 8,500 SF Shop/Warehouse
 - Three (3) Grade Level Doors
 - ± 60' Clear Span
 - Asking Rent: \$8,500/Month Gross
- + ± 0.25 Acre Fenced Fenced Lot In Rear Of Property
 - Asking Rent: \$600/Month Gross
- + Clear Height: ± 18'
- + Total Blended Rate: \$12.13/SF Gross



Contact Us

Joe Kemp

Senior Associate

+1 248 936 6892

joe.kemp@cbre.com

Matt Osiecki

First Vice President

+1 248 351 2079

matt.osiecki@cbre.com

Jared Sherman

Associate

+1 248 978 6593

jared.sherman@cbre.com

© 2024 CBRE, Inc. All rights reserved. This information has been obtained from sources believed reliable but has not been verified for accuracy or completeness. CBRE, Inc. makes no guarantee, representation or warranty and accepts no responsibility or liability as to the accuracy, completeness, or reliability of the information contained herein. You should conduct a careful, independent investigation of the property and verify all information. Any reliance on this information is solely at your own risk.

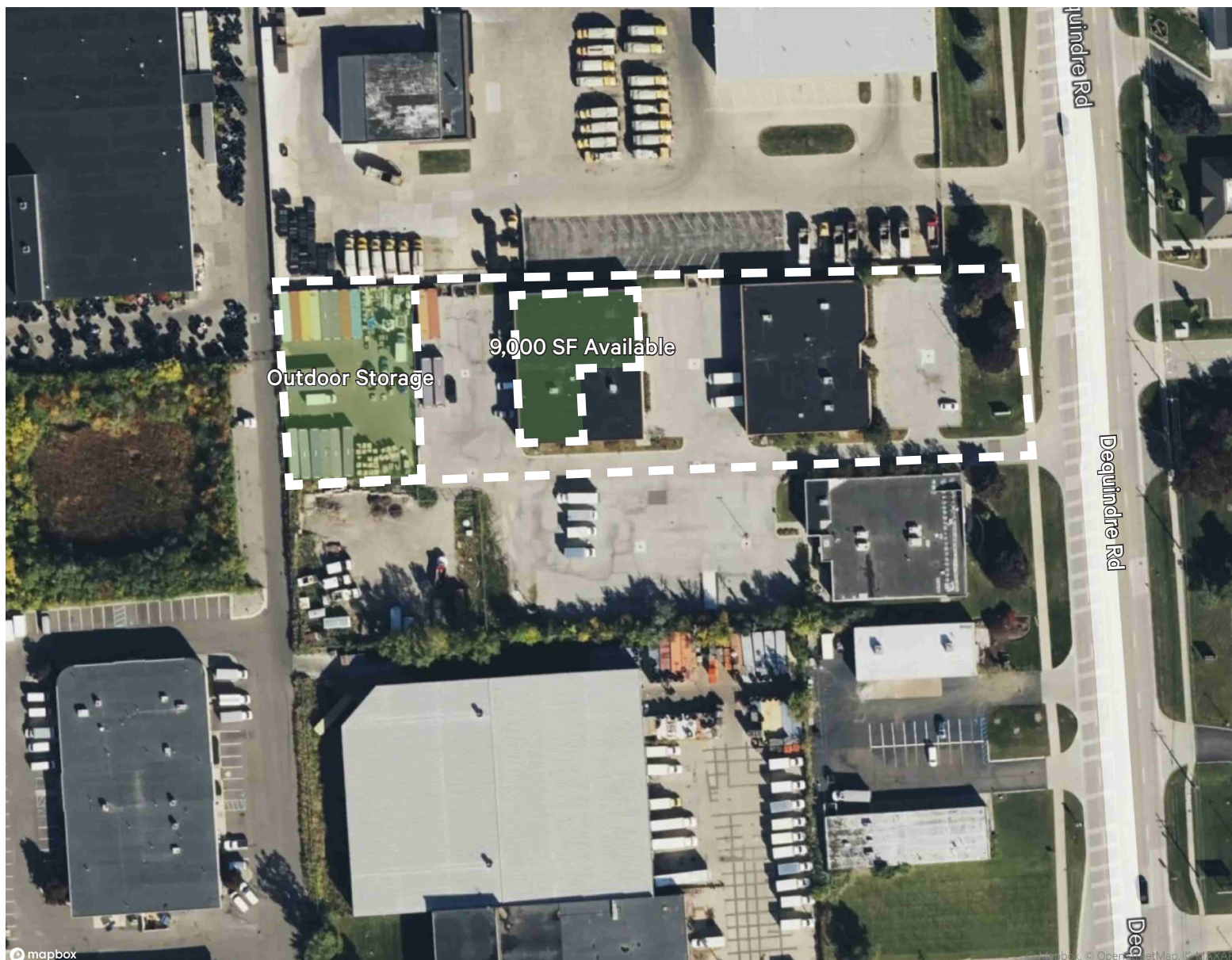
www.cbre.com/detroit

CBRE

33341 Dequindre Rd
Troy, MI

For Lease

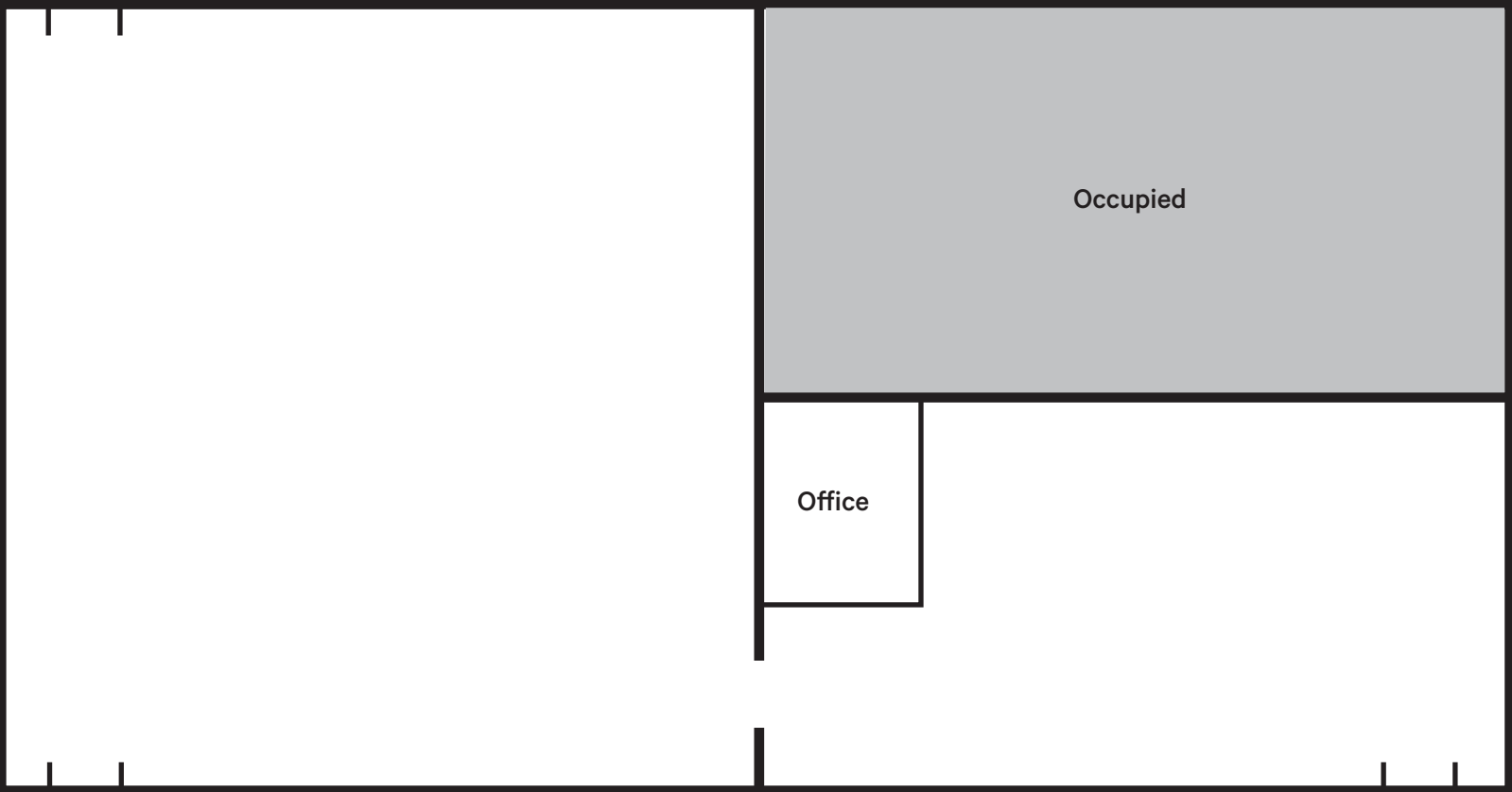
Property Aerial



© 2024 CBRE, Inc. All rights reserved. This information has been obtained from sources believed reliable but has not been verified for accuracy or completeness. CBRE, Inc. makes no guarantee, representation or warranty and accepts no responsibility or liability as to the accuracy, completeness, or reliability of the information contained herein. You should conduct a careful, independent investigation of the property and verify all information. Any reliance on this information is solely at your own risk.

Floor Plan (Back Building)

Overhead Doors



Overhead Doors

Overhead Doors

© 2024 CBRE, Inc. All rights reserved. This information has been obtained from sources believed reliable but has not been verified for accuracy or completeness. CBRE, Inc. makes no guarantee, representation or warranty and accepts no responsibility or liability as to the accuracy, completeness, or reliability of the information contained herein. You should conduct a careful, independent investigation of the property and verify all information. Any reliance on this information is solely at your own risk.

33341 Dequindre Rd
Troy, MI

For Lease

Property Photos



© 2024 CBRE, Inc. All rights reserved. This information has been obtained from sources believed reliable but has not been verified for accuracy or completeness. CBRE, Inc. makes no guarantee, representation or warranty and accepts no responsibility or liability as to the accuracy, completeness, or reliability of the information contained herein. You should conduct a careful, independent investigation of the property and verify all information. Any reliance on this information is solely at your own risk.