

CLASS A OFFICE SPACE CLOSE TO HOME BOOK YOUR TOUR TODAY!



FOR LEASE



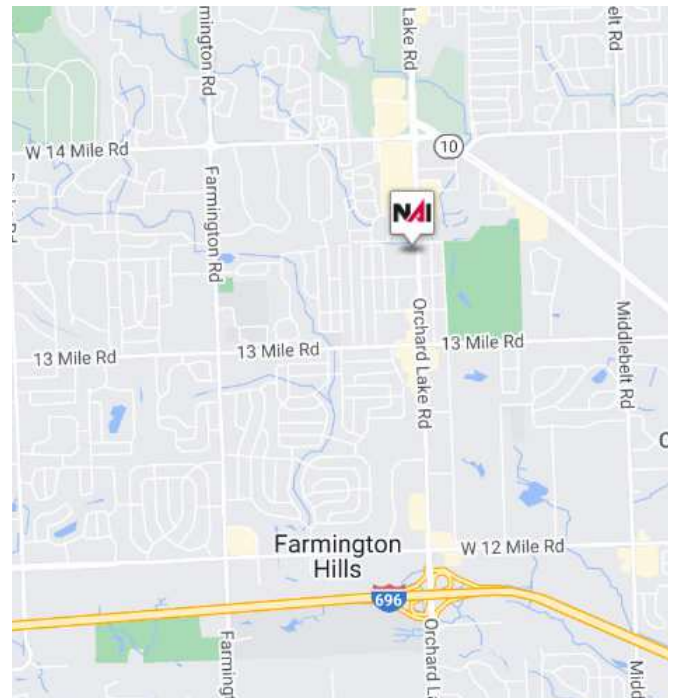
CLASS A OFFICE - MODERN DESIGN - NEW RENOVATIONS

30201 Orchard Lake Road

Farmington Hills, Michigan 48334

Property Highlights

- **Prime Location** Located in the Heart of Farmington Hills, Our Office is Easily Accessible and Surrounded by Amenities
- **Modern Design** State of the Art Facilities with Contemporary Interiors that Inspire Creativity
- **Flexible Options** Tailored to Fit Your Needs, from Private Offices to Collaborative Spaces
- **Professional Community** Network and Collaborate with Like-Minded Professionals in a Vibrant Community



SPACES	LEASE RATE	SPACE SIZE
Suite 130	\$17.50 SF/yr	2,140 SF
Suite 255	\$17.50 SF/yr	2,439 SF



Commercial Real Estate Services, Worldwide.

www.naifarberman.com

Lesley Gutman
Senior Vice President | 248.860.6800
lgutman@farberman.com

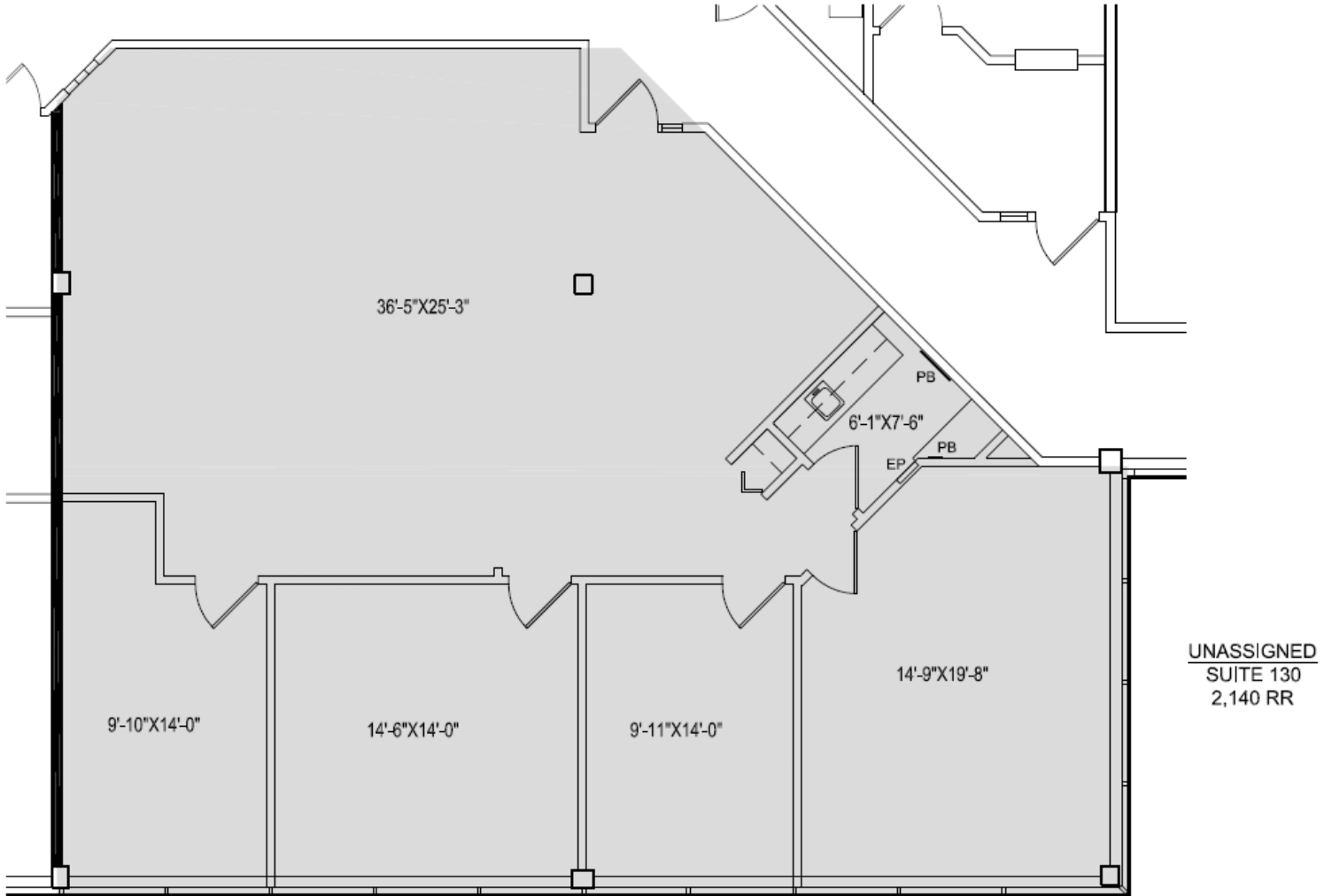
Sheila Fogarty
Senior Vice President | 248.798.9813
fogarty@farberman.com

NO WARRANTY, EXPRESS OR IMPLIED, IS MADE AS TO THE ACCURACY OF THE INFORMATION CONTAINED HEREIN. THIS INFORMATION IS SUBMITTED SUBJECT TO ERRORS, OMISSIONS, CHANGE OF PRICE, RENTAL OR OTHER CONDITIONS, WITHDRAWAL WITHOUT NOTICE, AND IS SUBJECT TO ANY SPECIAL LISTING CONDITIONS IMPOSED BY OUR PRINCIPALS, COOPERATING BROKERS, BUYERS, TENANTS AND OTHER PARTIES WHO RECEIVE THIS DOCUMENT SHOULD NOT RELY ON IT, BUT SHOULD USE IT AS A STARTING POINT OF ANALYSIS, AND SHOULD INDEPENDENTLY CONFIRM THE ACCURACY OF THE INFORMATION CONTAINED HEREIN THROUGH A DUE DILIGENCE REVIEW OF THE BOOKS, RECORDS, FILES AND DOCUMENTS THAT CONSTITUTE RELIABLE SOURCES OF THE INFORMATION DESCRIBED HEREIN. LOGOS ARE FOR IDENTIFICATION PURPOSES ONLY AND MAY BE TRADEMARKS OF THEIR RESPECTIVE COMPANIES. NAI Farberman, INC. CA BRE LIC. #01990696.

CLASS A OFFICE SPACE CLOSE TO HOME BOOK YOUR TOUR TODAY!



FOR LEASE



WESTFIELD OFFICE CENTER - SUITE 130
30201 ORCHARD LAKE RD. FARMINGTON, MI
6-28-23 SCALE: 3/16" = 1'-0"



Commercial Real Estate Services, Worldwide.

www.naifarbman.com

Lesley Gutman
Senior Vice President | 248.860.6800
lgutman@farbman.com

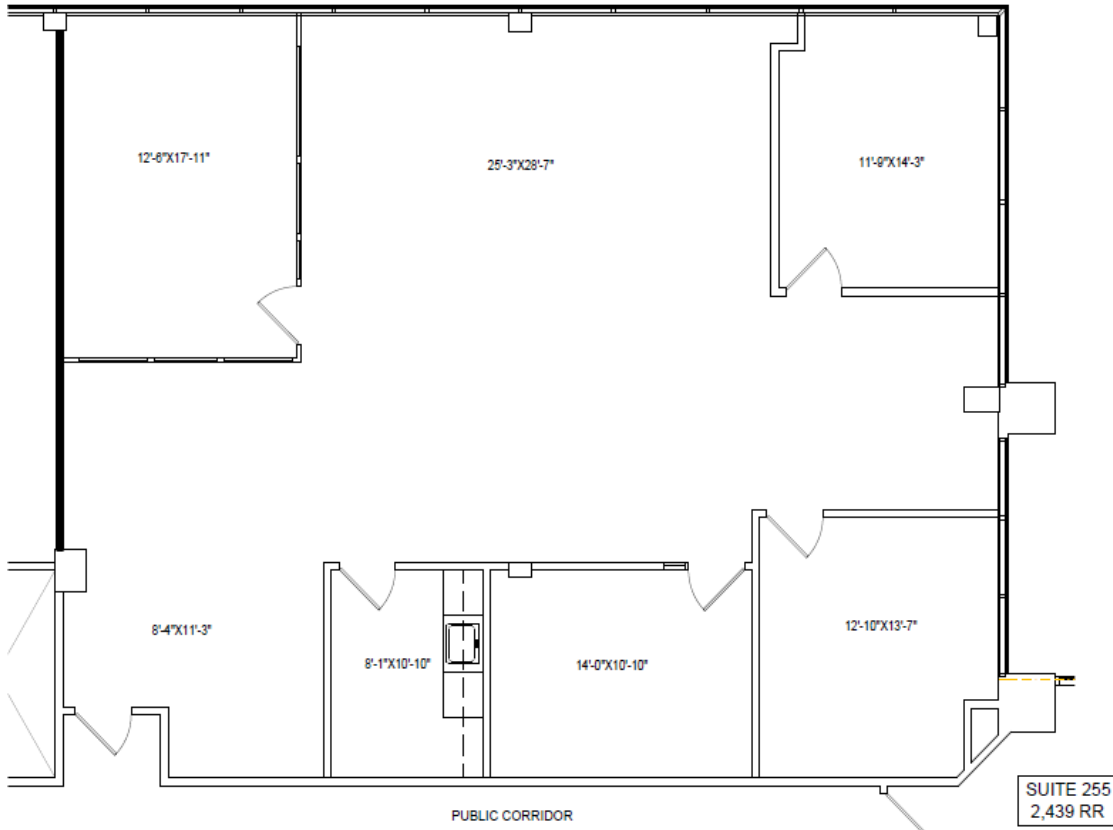
Sheila Fogarty
Senior Vice President | 248.798.9813
fogarty@farbman.com

NO WARRANTY, EXPRESS OR IMPLIED, IS MADE AS TO THE ACCURACY OF THE INFORMATION CONTAINED HEREIN. THIS INFORMATION IS SUBMITTED SUBJECT TO ERRORS, OMISSIONS, CHANGE OF PRICE, RENTAL OR OTHER CONDITIONS, WITHDRAWAL WITHOUT NOTICE, AND IS SUBJECT TO ANY SPECIAL LISTING CONDITIONS IMPOSED BY OUR PRINCIPALS, COOPERATING BROKERS, BUYERS, TENANTS AND OTHER PARTIES WHO RECEIVE THIS DOCUMENT SHOULD NOT RELY ON IT, BUT SHOULD USE IT AS A STARTING POINT OF ANALYSIS, AND SHOULD INDEPENDENTLY CONFIRM THE ACCURACY OF THE INFORMATION CONTAINED HEREIN THROUGH A DUE DILIGENCE REVIEW OF THE BOOKS, RECORDS, FILES AND DOCUMENTS THAT CONSTITUTE RELIABLE SOURCES OF THE INFORMATION DESCRIBED HEREIN. LOGOS ARE FOR IDENTIFICATION PURPOSES ONLY AND MAY BE TRADEMARKS OF THEIR RESPECTIVE COMPANIES. NAI Farbman, INC. CA BRE LIC. #01990696.

CLASS A OFFICE SPACE CLOSE TO HOME BOOK YOUR TOUR TODAY!



FOR LEASE



WESTFIELD OFFICE CENTER - SUITE 255
30201 ORCHARD LAKE RD. FARMINGTON, MI
10-22-24 SCALE: 3/16" = 1'-0"



PREPARED BY METRO CAD GROUP



Commercial Real Estate Services. Worldwide.
www.naifarbman.com

Lesley Gutman
Senior Vice President | 248.860.6800
lgutman@farbman.com

Sheila Fogarty
Senior Vice President | 248.798.9813
fogarty@farbman.com

NO WARRANTY, EXPRESS OR IMPLIED, IS MADE AS TO THE ACCURACY OF THE INFORMATION CONTAINED HEREIN. THIS INFORMATION IS SUBMITTED SUBJECT TO ERRORS, OMISSIONS, CHANGE OF PRICE, RENTAL OR OTHER CONDITIONS, WITHDRAWAL WITHOUT NOTICE, AND IS SUBJECT TO ANY SPECIAL LISTING CONDITIONS IMPOSED BY OUR PRINCIPALS, COOPERATING BROKERS, BUYERS, TENANTS AND OTHER PARTIES WHO RECEIVE THIS DOCUMENT SHOULD NOT RELY ON IT, BUT SHOULD USE IT AS A STARTING POINT OF ANALYSIS, AND SHOULD INDEPENDENTLY CONFIRM THE ACCURACY OF THE INFORMATION CONTAINED HEREIN THROUGH A DUE DILIGENCE REVIEW OF THE BOOKS, RECORDS, FILES AND DOCUMENTS THAT CONSTITUTE RELIABLE SOURCES OF THE INFORMATION DESCRIBED HEREIN. LOGOS ARE FOR IDENTIFICATION PURPOSES ONLY AND MAY BE TRADEMARKS OF THEIR RESPECTIVE COMPANIES. NAI Farbman, INC. CA BRE LIC. #01990696.