



201

SPEAR STREET





CURRENT AVAILABILITIES

| SUITE | RSF | AVAILABILITY | DESCRIPTION |
|-------|-------|--------------|--|
| 1700 | 8,768 | 7/1/19 | Fantastic bay views, 6 private offices, large conference room, kitchen, open area for workstations |
| 220 | 4,739 | 10/1/19 | Creative spec suite, partial bay bridge views, double door identity, 3 private offices, conference room, open area for 39 workstations, kitchen/break area |

Zach Siegel
415.773.3596
zach.siegel@cushwake.com
CA License No. 01129196

Sam Wasserstein
415.773.3528
sam.wasserstein@cushwake.com
CA License No. 01798616

Cushman & Wakefield of California, Inc.
CA License No. 00616332
425 Market Street, Suite 2300
San Francisco, CA 94105

KBS

CUSHMAN & WAKEFIELD

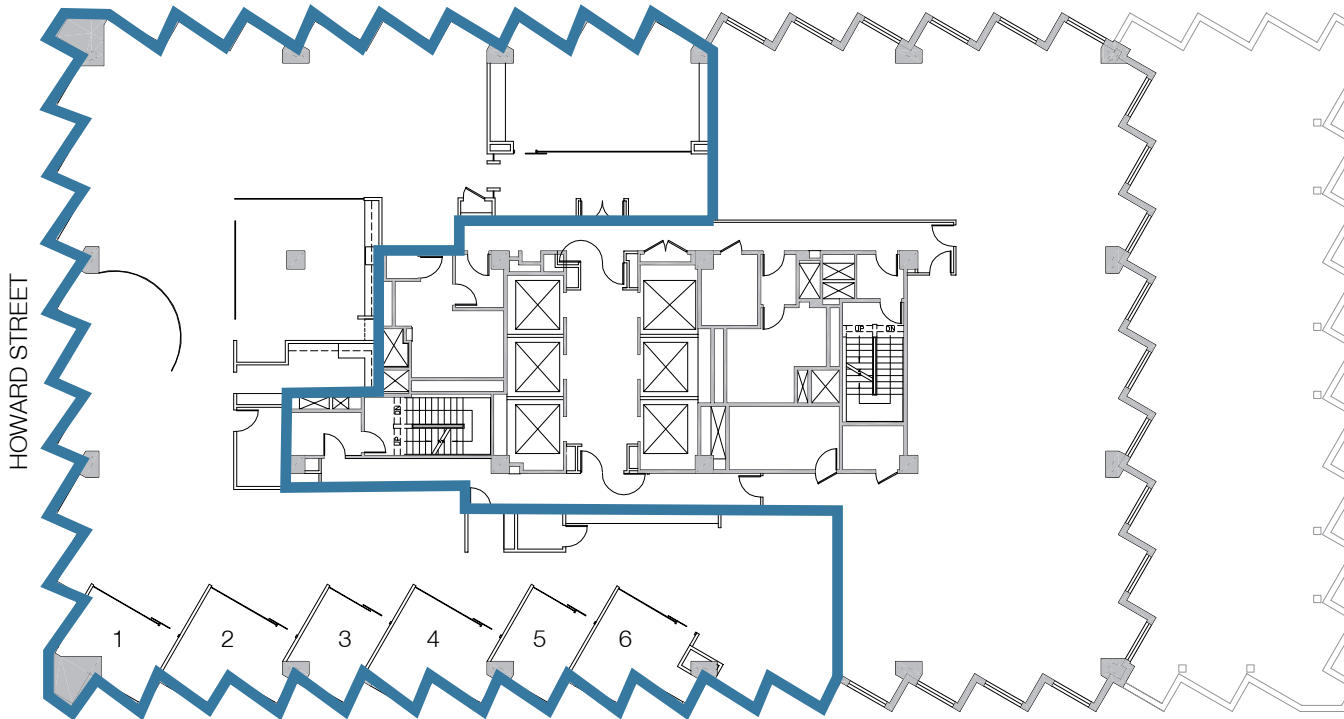
BAY VIEWS



201
SPEAR STREET

SUITE 1700
8,768 RSF

STEUART STREET



HOWARD STREET

SPEAR STREET

Fantastic Bay Views

6 Private Offices

Large Conference Room

Kitchen

Open Area for Workstations

Available 7/1/19

Zach Siegel
415.773.3596
zach.siegel@cushwake.com
CA License No. 01129196

Sam Wasserstein
415.773.3528
sam.wasserstein@cushwake.com
CA License No. 01798616

Cushman & Wakefield of California, Inc.
CA License No. 00616332
425 Market Street, Suite 2300
San Francisco, CA 94105

KBS

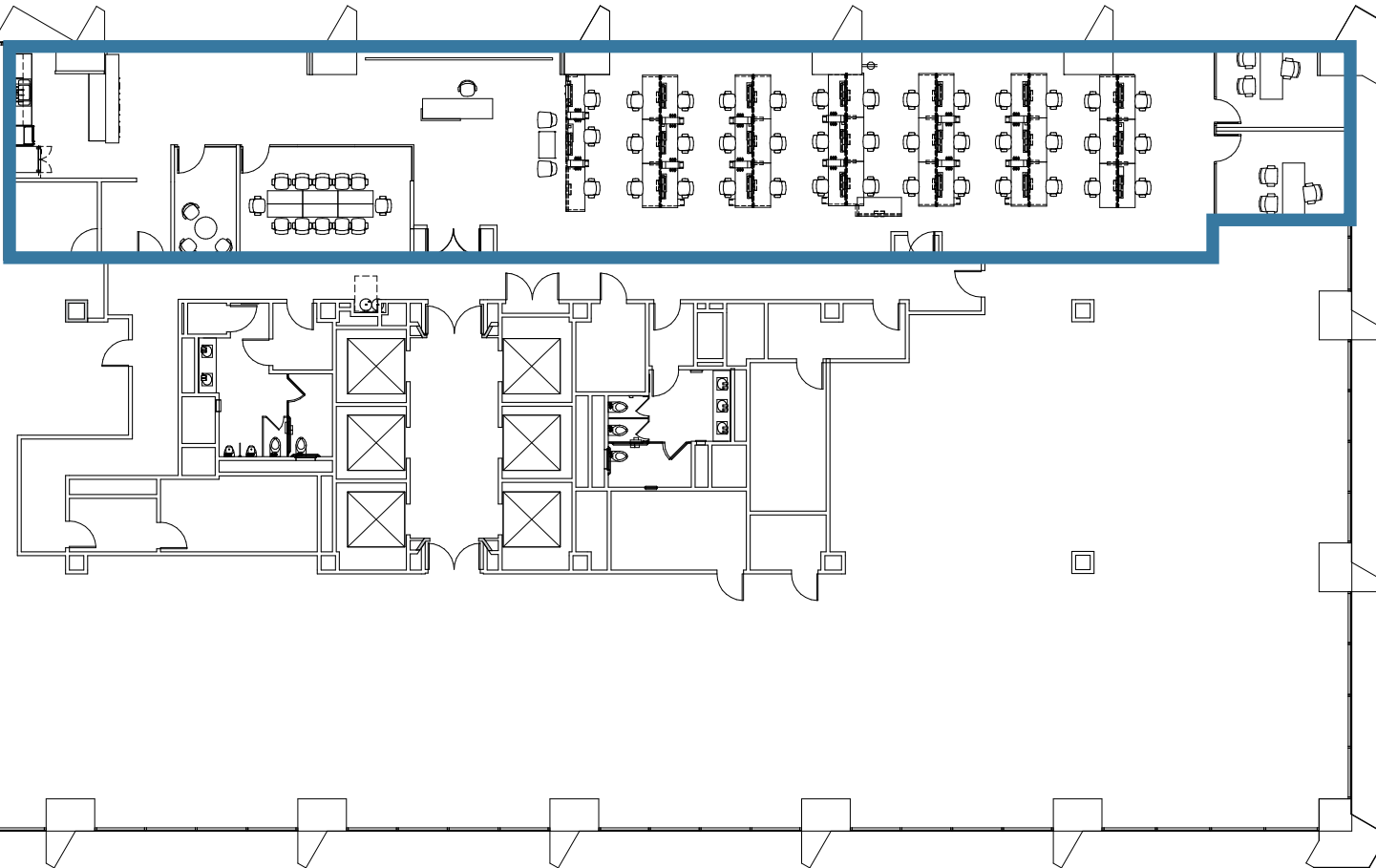
**CUSHMAN &
WAKEFIELD**



201
SPEAR STREET

SUITE 220
4,739 RSF

STEUART STREET



Creative Spec Suite

Partial Bay Bridge Views

3 Private Offices

Conference Room

Open Area For 39 Workstations

Kitchen/Break Area

Double Door Identity

Available 10/1/19

Zach Siegel
415.773.3596
zach.siegel@cushwake.com
CA License No. 01129196

Sam Wasserstein
415.773.3528
sam.wasserstein@cushwake.com
CA License No. 01798616

Cushman & Wakefield of California, Inc.
CA License No. 00616332
425 Market Street, Suite 2300
San Francisco, CA 94105

KBS

**CUSHMAN &
WAKEFIELD**



MODERNIZATION HIGHLIGHTS

Major Lobby Renovation Completed

Exclusive Tenant Lounge

Conference Facility

Locker Room With Showers

Bicycle Parking

Refreshed Elevator Cabs

Upgraded Common Areas

**Gozu, a new Wagyu beef restaurant,
coming soon!**



Zach Siegel
415.773.3596
zach.siegel@cushwake.com
CA License No. 01129196

Sam Wasserstein
415.773.3528
sam.wasserstein@cushwake.com
CA License No. 01798616

Cushman & Wakefield of California, Inc.
CA License No. 00616332
425 Market Street, Suite 2300
San Francisco, CA 94105

KBS

**CUSHMAN &
WAKEFIELD**

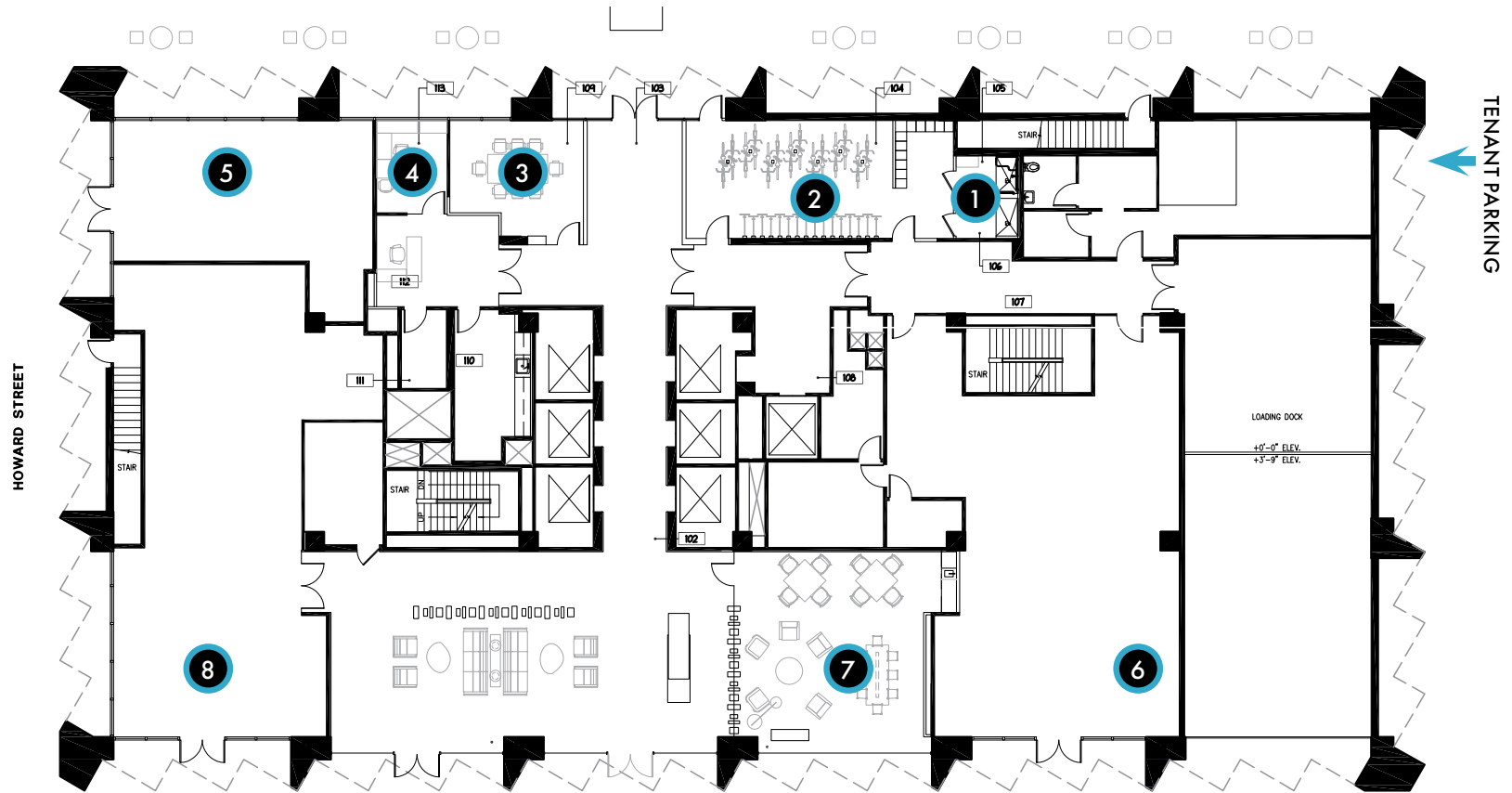


201
SPEAR STREET

**TENANT
AMENITIES**

TENANT AMENITIES

- 1** Tenant Showers/
Locker Room
- 2** Bicycle Storage
- 3** Tenant Conference
Facility
- 4** Onsite Property
Manager
- 5** Dry Cleaners
- 6** Restaurant
- 7** Tenant Lounge
- 8** Starbucks



Zach Siegel
415.773.3596
zach.siegel@cushwake.com
CA License No. 01129196

Sam Wasserstein
415.773.3528
sam.wasserstein@cushwake.com
CA License No. 01798616

Cushman & Wakefield of California, Inc.
CA License No. 00616332
425 Market Street, Suite 2300
San Francisco, CA 94105

KBS

**CUSHMAN &
WAKEFIELD**