

**FOR LEASE**  
**111 Payne Road**  
**Thomasville, NC 27360**

**NAIPiedmont Triad**

**\$7.50 SF/YR (NNN)**



## **Industrial | ± 8,040 SF**

- ± 8,040 SF with Approximately 500 SF Office
- 8' x 10' Dock Door
- Loading Platform with 40" Wide Door
- Bi-level Building with Ceiling Heights of 12' and 18'
- Great Access to Business-85, then 15 Miles to Greensboro or Winston-Salem



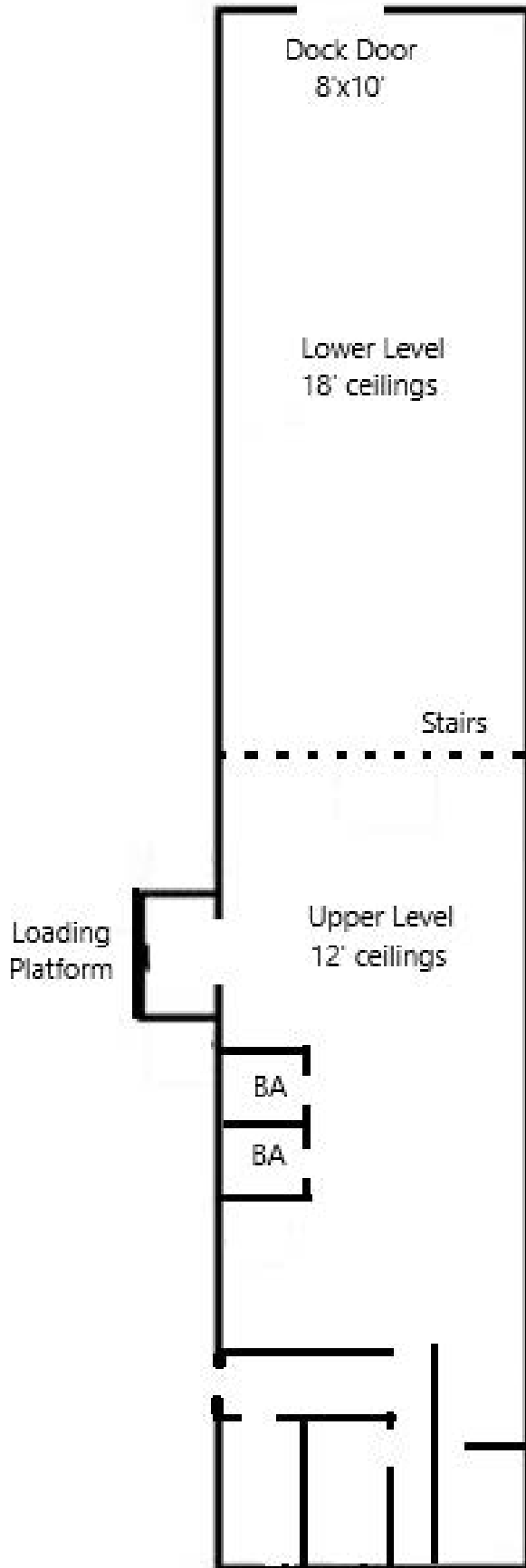
✉ **Ben Sturgill**  
**+1 336 358 3229**  
**bsturgill@naipt.com**

No Warranty Or Representation, Express Or Implied, Is Made As To The Accuracy Of The Information Contained Herein, And The Same Is Submitted Subject To Errors, Omissions, Change Of Price, Rental Or Other Conditions, Prior Sale, Lease Or Financing, Or Withdrawal Without Notice, And Of Any Special Listing Conditions Imposed By Our Principals. No Warranties Or Representations Are Made As To The Condition Of The Property Or Any Hazards Contained Therein Are To Be Implied.

**NAIPiedmont Triad**

**FOR LEASE**  
**111 Payne Road**  
**Thomasville, NC 27360**

**NAI Piedmont Triad**



✉ **Ben Sturgill**  
**+1 336 358 3229**  
**bsturgill@naipt.com**

No Warranty Or Representation, Express Or Implied, Is Made As To The Accuracy Of The Information Contained Herein, And The Same Is Submitted Subject To Errors, Omissions, Change Of Price, Rental Or Other Conditions, Prior Sale, Lease Or Financing, Or Withdrawal Without Notice, And Of Any Special Listing Conditions Imposed By Our Principals. No Warranties Or Representations Are Made As To The Condition Of The Property Or Any Hazards Contained Therein Are Any To Be Implied.

**NAI Piedmont Triad**