

Wei San Building

2201 W Valley Hwy N Suite A
Auburn, WA 98001

.....
Excellent Location with Easy Access
to SR-167, HWY 18, & I-5

.....
High Image Architectural Design

.....
Professional Business Park

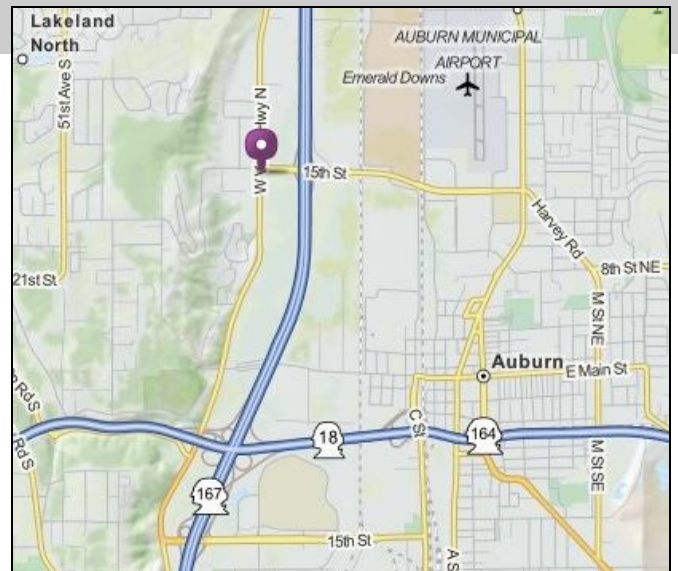
.....
Ample parking

.....
Great Street Exposure to WVH



SPACE INFORMATION

- Shell: 1,950 sf with mezzanine storage
- Office 1,000 sf front office / reception
- Available: Now
- Rate: \$3,750 total per month (includes NNN)
- Details Great opportunity in high exposure industrial park on W Valley Hwy. & 22nd St. 16' - 18' high ceiling clearance, oversize grade level roll up doors, with ample parking.



Marguerite Hwang
253-561-6939
marguerite@turbak.com

Ann Hwang
253-293-7004
ann@turbak.com

Turbak Commercial Real Estate
2711 West Valley Hwy N #200
Auburn, WA 98001