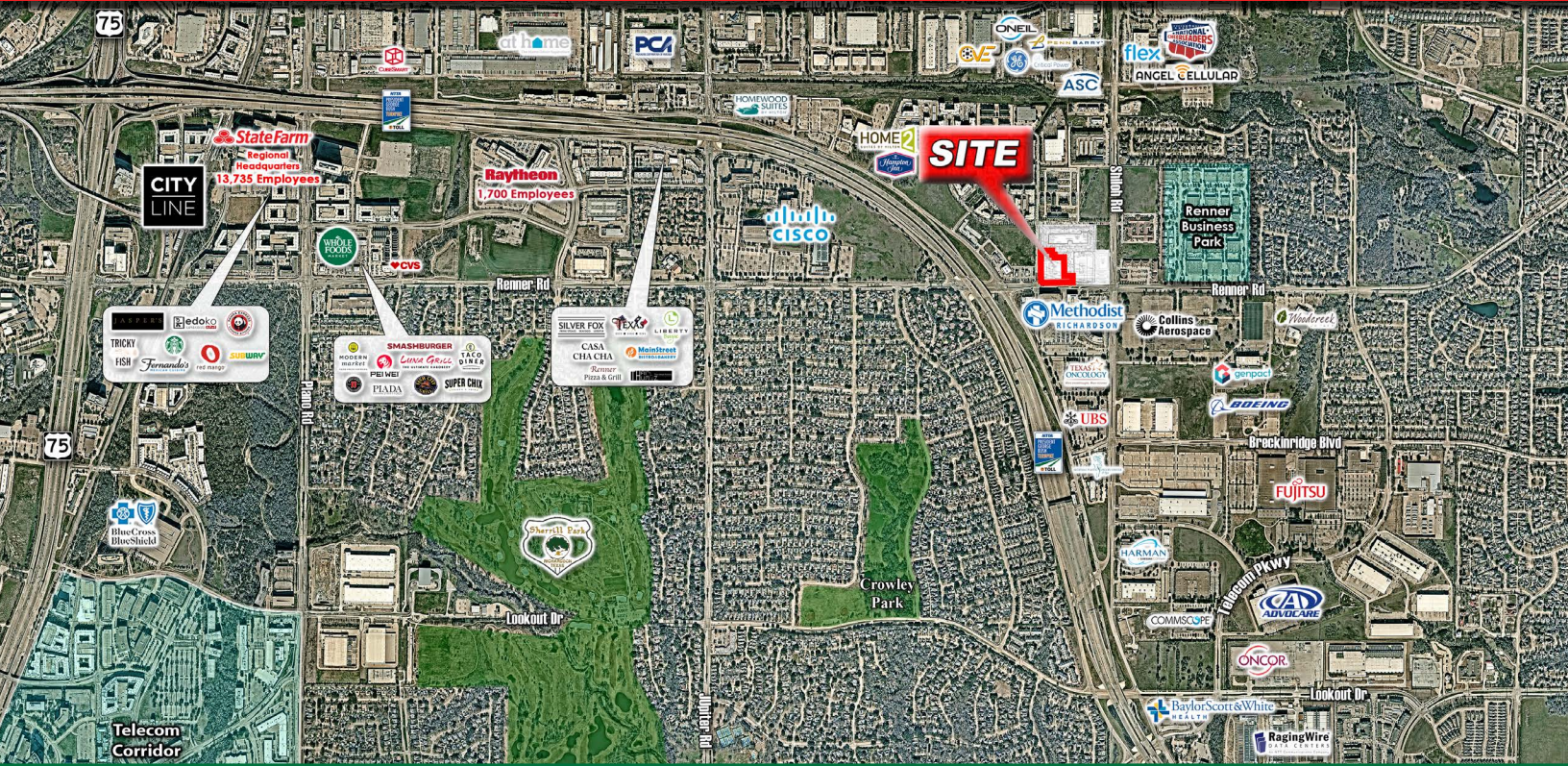


## PAD SITE AVAILABLE!

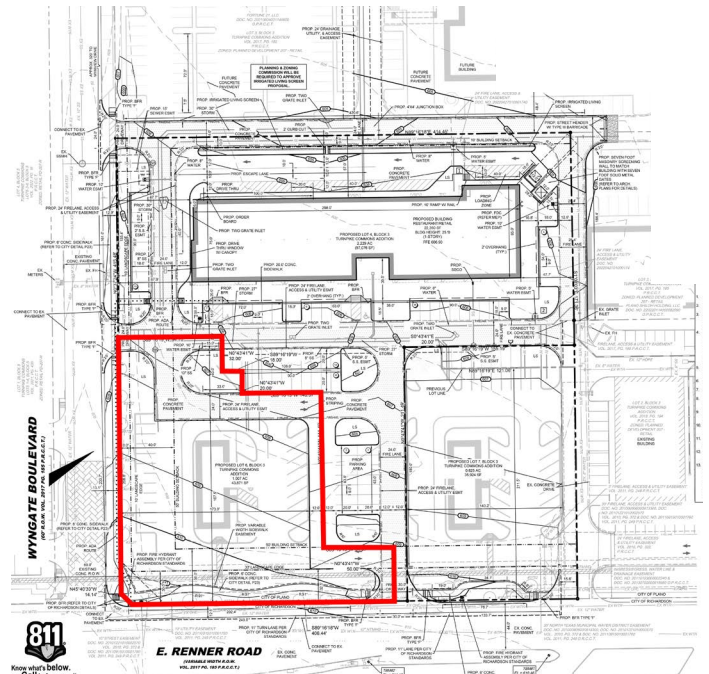


### PROPERTY DESCRIPTION

- New mixed-use development at George Bush Turnpike and E. Renner Road
- Pad Site available fronting Renner Road (going to work side) 43,871 SF
- Daytime population of 107,121 within 3 miles
- Easy access to President George Bush Turnpike
- Located directly across from Methodist Richardson Medical Center with 1,665 employees, a 209 bed hospital
- On the border of Plano and Richardson, two of DFW's most affluent communities

### DEMOGRAPHICS

	1 Mile	3 Mile	5 Mile
2023 Population	7,199	105,377	291,536
Daytime Population	14,902	117,314	326,232
Average HH Income	\$143,320	\$118,425	\$120,493



### TRAFFIC COUNTS:

Renner: 19,331 VPD | Shiloh: 4,652 VPD  
(TXDOT 2019) (TXDOT 2019)