

Industrial Space | For Lease

3028 Mercury Road, Jacksonville, Florida 32207

CBRE



13,640 - 21,000 SF Available

Located in Jacksonville's sought-after Southside submarket, this industrial space offers excellent accessibility just 0.5 miles from U.S. Route 1 (Philips Hwy) and 1.8 miles from I-95, making it an ideal space for distribution and logistics operations.

OPEX: \$2.41/SF

Asking Rate: Please Inquire

For More Information, Please Contact:

Kyle Murphy

Associate

+1 845 416 3890

kyle.murphy@cbre.com

21,000 SF Available

Space Available 21,000 SF

Office Space ±2,500 SF

Lot Size 2.99 AC

Loading (5) Dock High Doors
1 Drive in Ramp

Zoning Light Industrial (IL)

Clear Height 15'

Warehouse Lighting Fluorescent

Truck Court 110'

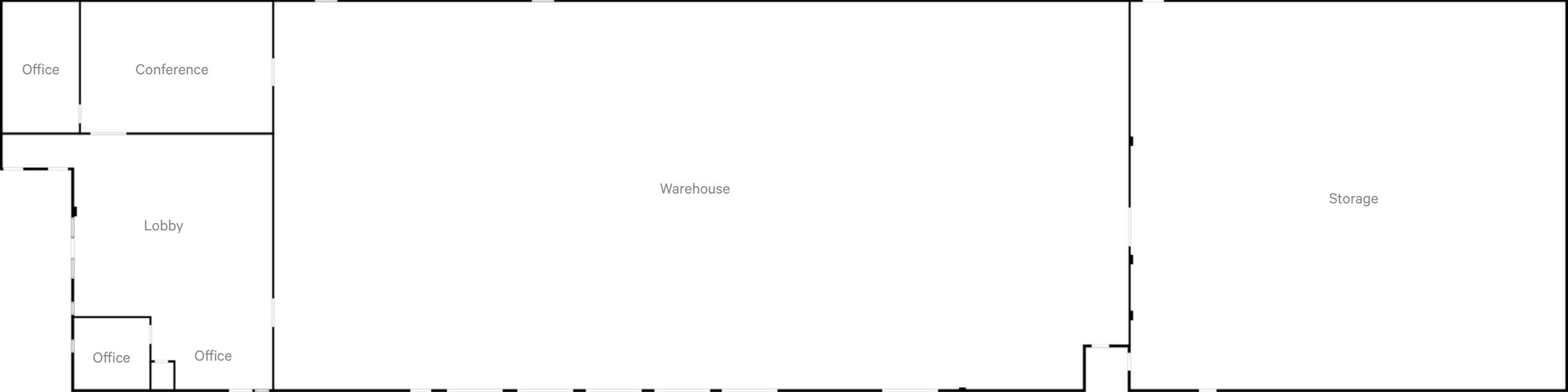
Building Depth 75'

Auto Parking 1.00/1,000 SF



Interior Warehouse

Interior Office



13,640 SF Available

Space Available 13,640 SF

Office Space 1,160 SF

Lot Size 2.99 AC

Loading 3 Dock High Doors

Zoning Light Industrial (IL)

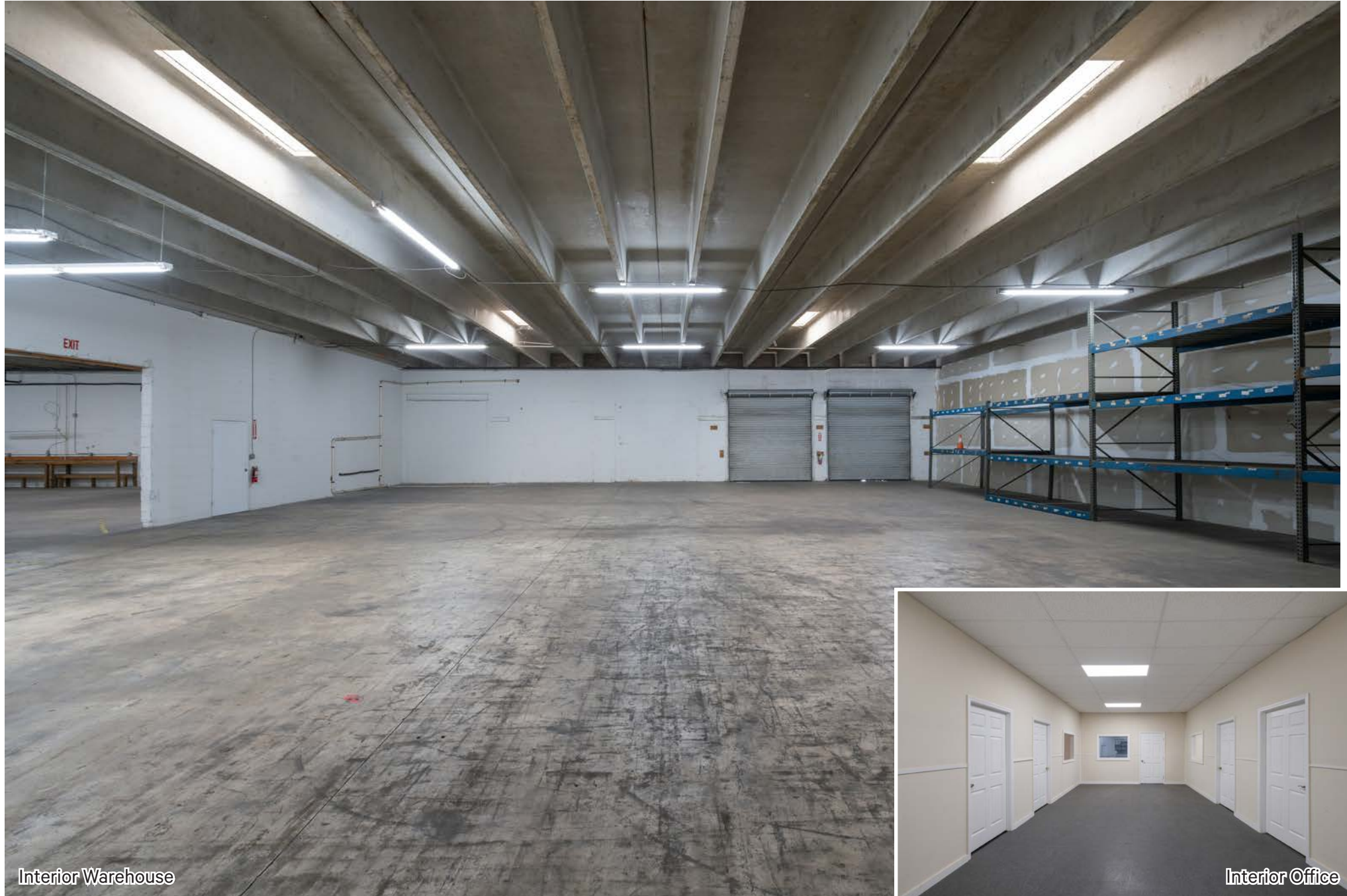
Clear Height 15'

Warehouse Lighting Fluorescent

Truck Court 110'

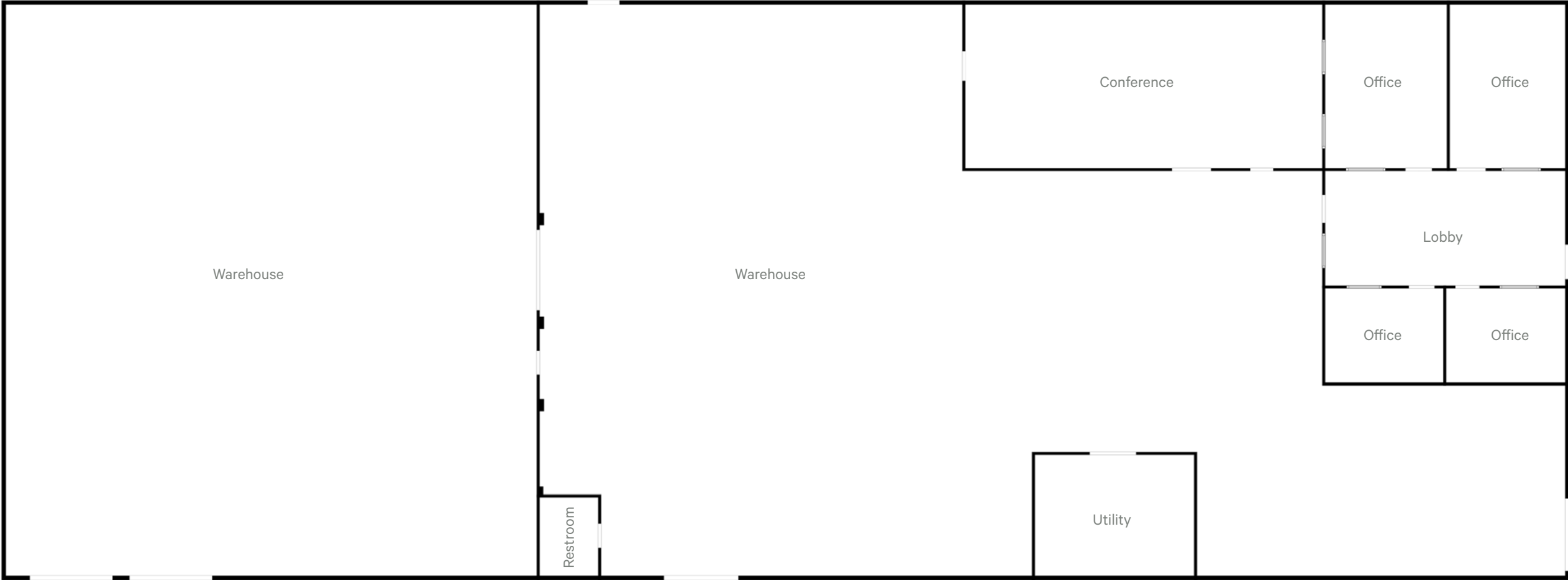
Building Depth 75'

Auto Parking 1.00/1,000 SF



Interior Warehouse

Interior Office

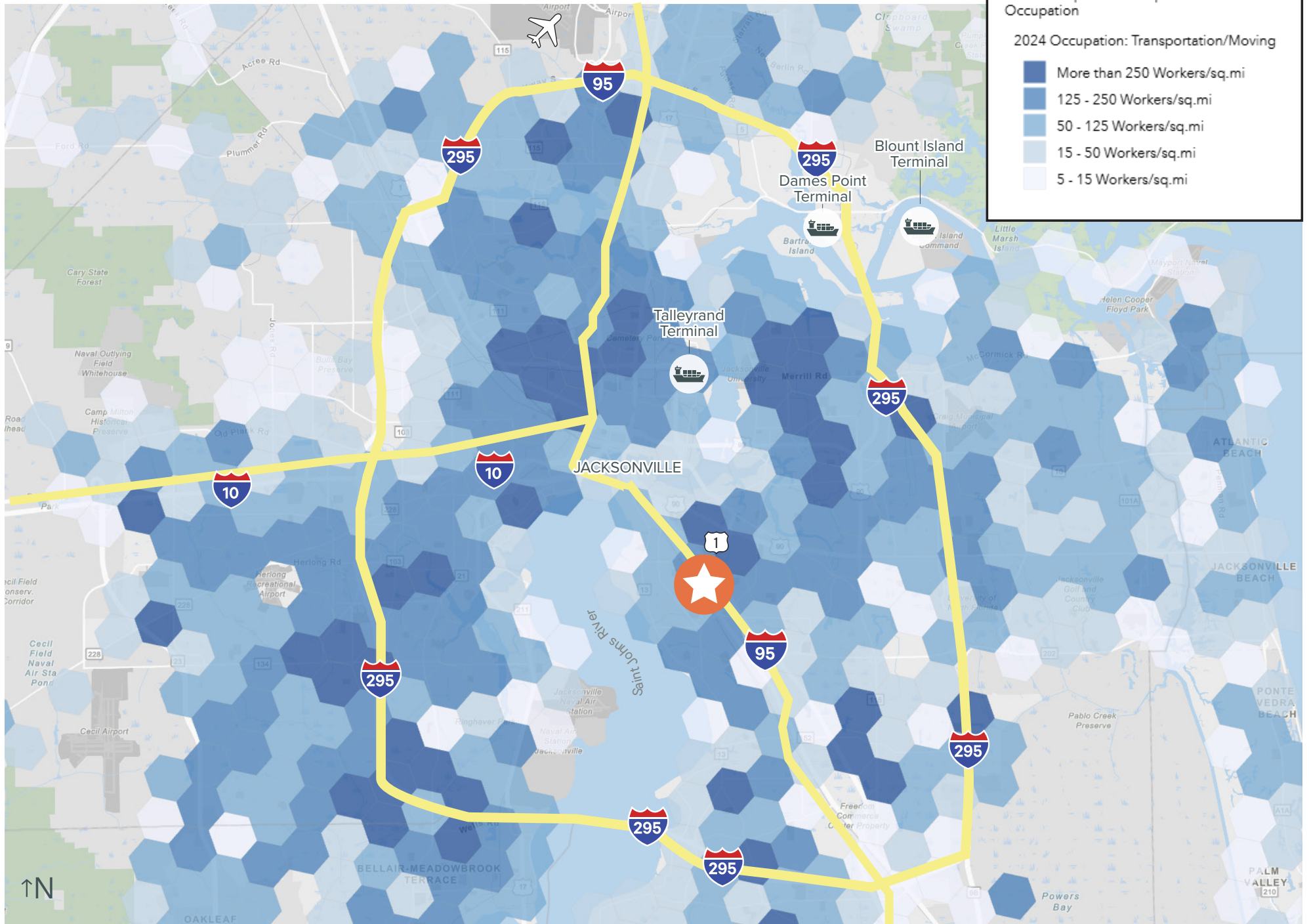


Transportation/Warehousing Workforce Density

2025 Transportation/Warehouse Labor
Workers/sq. mi. in Transportation/Warehouse
Occupation

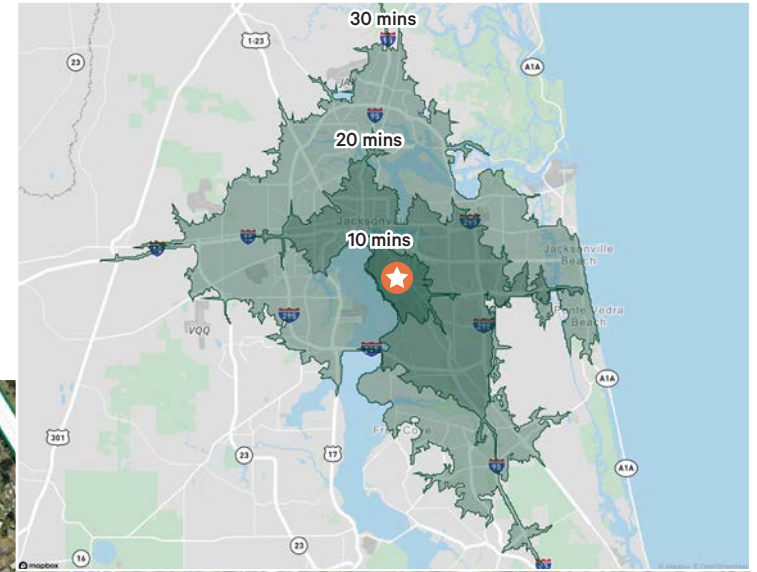
2024 Occupation: Transportation/Moving

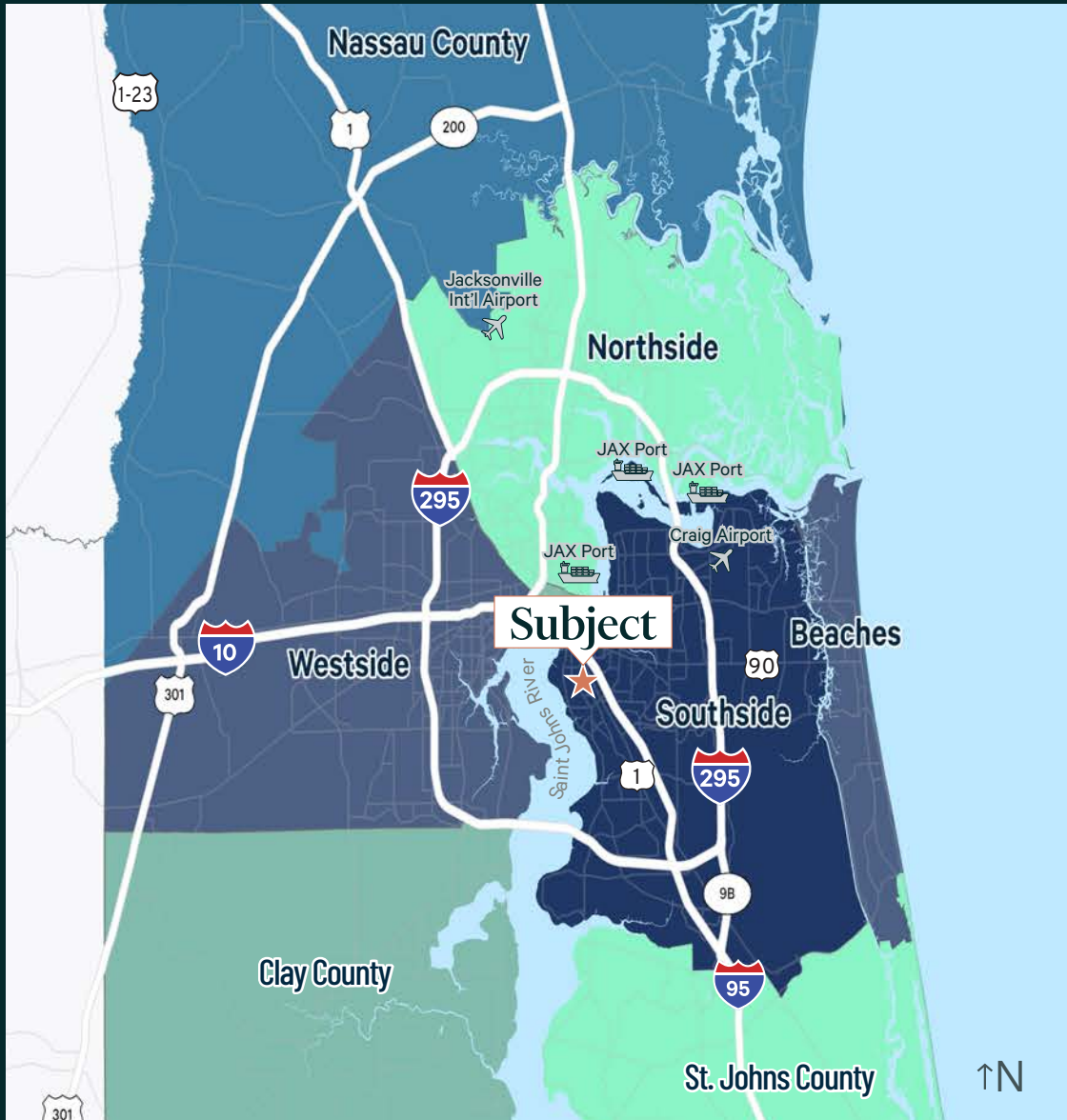
- More than 250 Workers/sq.mi
- 125 - 250 Workers/sq.mi
- 50 - 125 Workers/sq.mi
- 15 - 50 Workers/sq.mi
- 5 - 15 Workers/sq.mi



Key Metrics (Drive Time)

	10 minutes	20 minutes	30 minutes
Population	60,700	421,400	1,090,157
Daytime Population	89,529	599,589	1,180,968
Labor Force (Transportation, Production, Material Moving)	4,064	28,632	72,145
Bachelor's Degree or Higher	15,303	112,146	289,691
Businesses	4,721	27,449	46,774
Avg Household Income	\$100,187	\$93,676	\$106,888





Points of Interest	Distance
Interstate 295	3.5 mile
US-1	1 miles
Interstate 95	1.5 miles
US-10	3.5 miles
CSX Intermodal Facility	16.7 miles
Norfolk Southern Intermodal Facility	14.6 miles
JAXPORT Talleyrand	9 miles
FEC Intermodal Facility	2.6 miles
Jacksonville Int'l Airport	20.5 miles
JAXPORT Dames Point	20.7 miles
JAXPORT Blount Island	22.7 miles
Port of Savannah	147 miles
Port of Tampa	220 miles
Port of Charleston	246 miles

For More Information, Please Contact:

Kyle Murphy

Associate

+1 845 416 3890

kyle.murphy@cbre.com

© 2026 CBRE, Inc. All rights reserved. This information has been obtained from sources believed reliable, but has not been verified for accuracy or completeness. You should conduct a careful, independent investigation of the property and verify all information. Any reliance on this information is solely at your own risk. CBRE and the CBRE logo are service marks of CBRE, Inc. All other marks displayed on this document are the property of their respective owners, and the use of such logos does not imply any affiliation with or endorsement of CBRE. Photos herein are the property of their respective owners. Use of these images without the express written consent of the owner is prohibited.