

FOR LEASE

📍 2620 Kessler Blvd. East Dr, Indianapolis, IN



PROPERTY HIGHLIGHTS

- 10,455 SF For Lease:
 - Suite 115: 1,499 SF
 - Suite 200: 1,853 SF | Medical Spec Suite
 - Suite 215: 3,024 SF | 2nd Gen Medical Space
 - Suite 230: 4,079 SF | Move-in Ready Office Space
- Located in the heart of Glendale, minutes from Broad Ripple Village
- Abundant parking with portico for patient drop-off & pick-up
- Monument signage opportunities
- Competitive tenant improvement allowances
- Prime healthcare setting conveniently located near several major hospital systems, including IU Health Primary Care - Indianapolis, Community Physician Network - Family Medicine Care, IU Health Methodist Hospital, Community Hospital North, and Ascension St. Vincent Hospital - Indianapolis
- Recently completed common area upgrades



GLENDALE PROFESSIONAL PLAZA

2620 Kessler Blvd. East Dr.
Indianapolis, IN



CONTACT

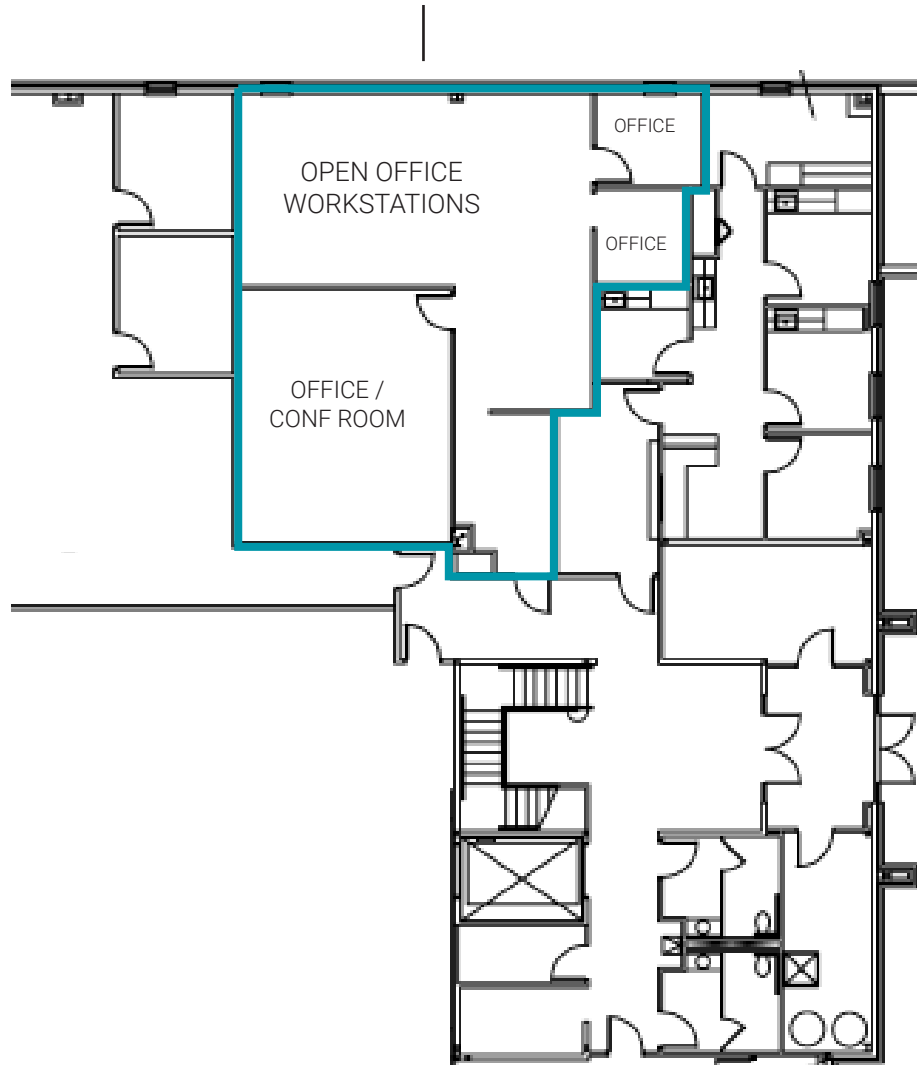
Jennifer McAllister
Brokerage Associate
(317) 288-9022
jmcallister@cciin.com

Cornerstone Companies, Inc.
8902 N Meridian Street, Suite 205
Indianapolis, IN, 46260

1st Floor

Suite 115:

1,499 SF



2nd Floor

Suite 230:

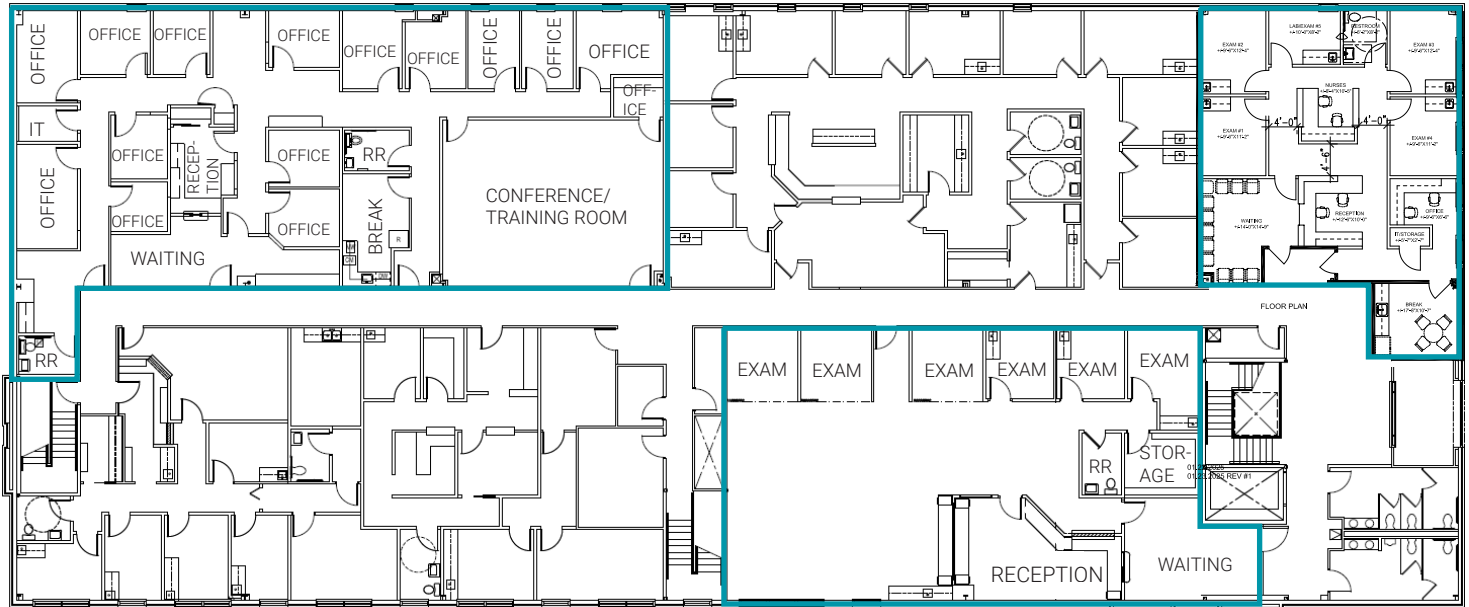
4,079 SF (divisible)

Move-in ready office space

Suite 200

1,853 SF

Medical Spec Suite



Suite 215:

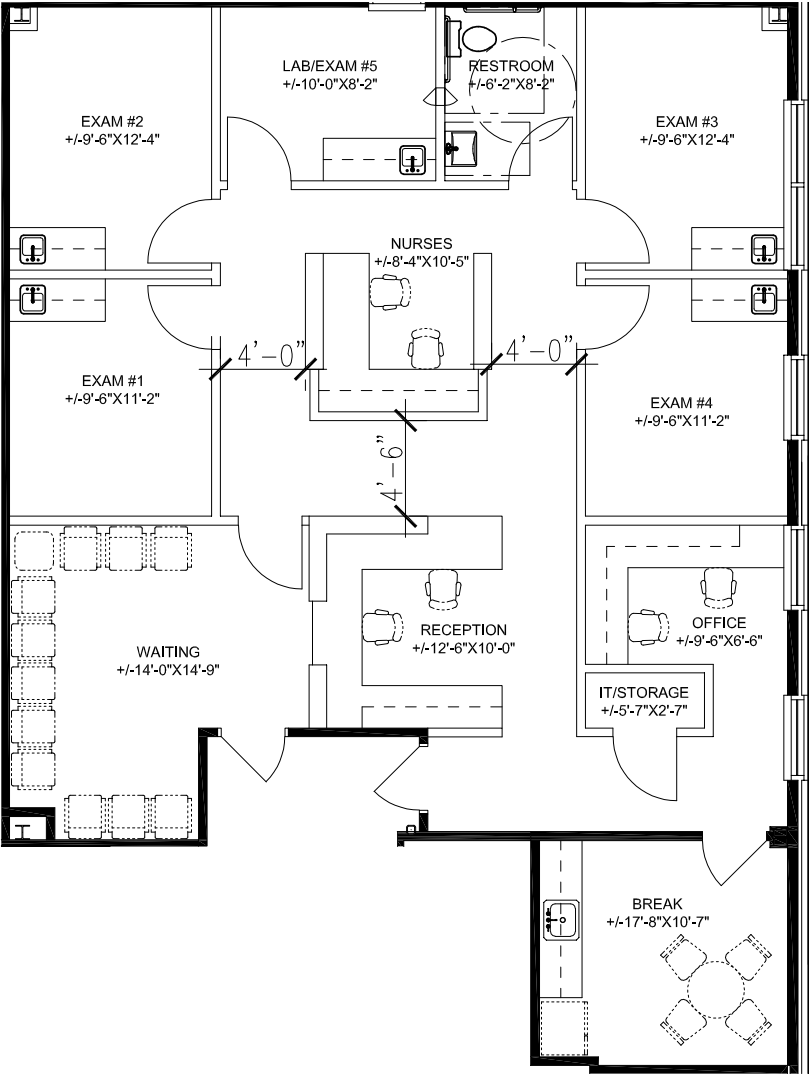
3,024 SF

2nd Gen Medical Space

MEDICAL SPEC SUITE

SUITE 200
1,853 SF

FLOOR PLANS





TRAFFIC COUNT

41,813 vehicles per day on Keystone Ave.

15,750 vehicles per day on E Kessler Blvd.

DEMOGRAPHICS (5 - mile radius)



224,772
Population



36.4
Median Age



98,519
Households



\$80,405
Median Household Income



CONTACT

Jennifer McAllister
Brokerage Associate
(317) 288-9022
jmcallister@ccin.com



CORNERSTONE



**HEALTHCARE
REALTY**

© 2022 Cornerstone Companies, Inc. All rights reserved. Although the information contained herein has been obtained from sources deemed reliable, Owner, Cornerstone Companies, Inc., and/or their representatives, brokers or agents make no representation or warranty as to its accuracy or completeness. Any reliance on this information is solely at your own risk.